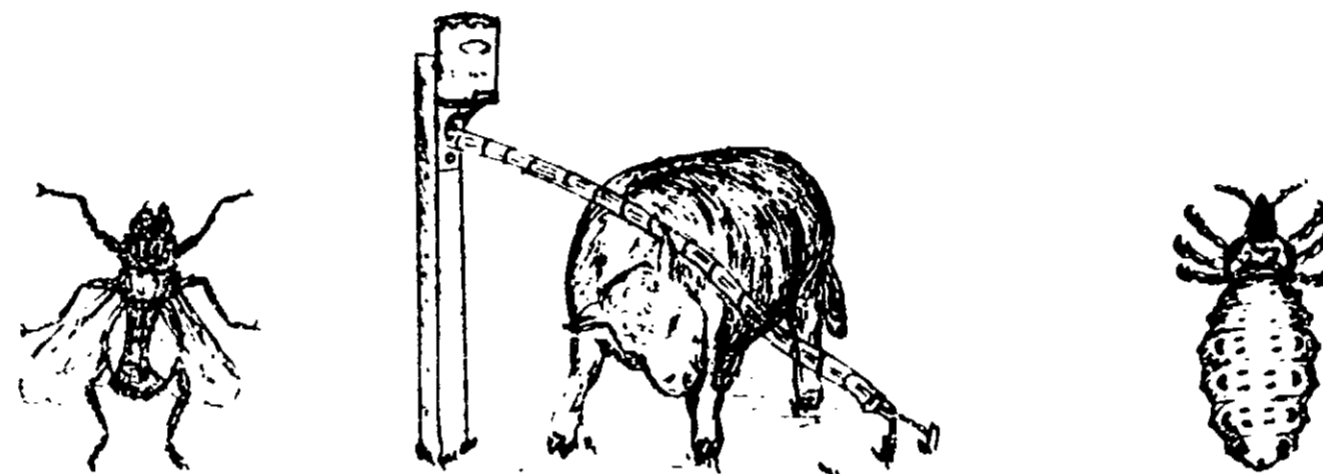




ACCEPTED
 June-8-1972
 4931-93

BACK RUBBER CONCENTRATE
KORLAN* — 5%



*KORLAN for control of horn flies and as an aid in the control of lice on beef and non-lactating dairy cattle if used continuously.

ONE GALLON CONCENTRATE MAKES
 5 GALLONS BACK RUBBER SOLUTION

ACTIVE INGREDIENTS	
Ronnel (0,0-Dimethyl 0-(2,4,5-Trichlorophenyl) Phosphorothioate)	5
INERT INGREDIENTS	95
TOTAL	100

*KORLAN — Registered trademark of The Dow Chemical Co.
 U.S. Pat. No. 2,599,516

** Pure technical grade, not suitable for internal use in animals.

EPA REG. NO. 4931-93

CAUTION
KEEP OUT OF REACH OF CHILDREN
 SEE SIDE PANEL FOR OTHER CAUTIONS.

CAUTION:

Harmful if swallowed. Avoid breathing fumes or spray mist.

Avoid contamination of feed, food and water.

Avoid skin contact.

Wash thoroughly after using.

Do not reuse container. Destroy by burying with waste or burning. Stay out of smoke and fumes.

KEEP OUT OF REACH OF CHILDREN.

Note to Physician: Brand "KORLAN" is a cholinesterase inhibitor. Atropine is an antidote. Treat symptomatically.

LIVESTOCK COMPOUND -- NOT FOR HUMAN USE

NOTICE:

Seller's guarantee is limited to the terms of the label and subject matter. The buyer assumes any risk to persons or property arising out of use or handling and accepts the product in these conditions.

Manufactured by

GOOD-LIFE CHEMICALS, INC.
 GOOD-LIFE DRIVE P. O. BOX 687
 EFFINGHAM, ILLINOIS 62401

DIRECTIONS FOR USE:

GOODLIFE BACK RUBBER CONCENTRATE containing KORLAN* must be diluted with 4 parts of fuel oil or kerosene + 1 gallon concentrate in 4 gallons oil, before application to back rubber equipment.

The diluted mixture may be used in all types of livestock orders. In automatic oilers, refill when necessary and make available to animals. With hand-pollers, use 1 gal. of mixture to 20 ft. of burlap surface. Do not let burlap dry.

CAUTION. DO NOT USE BEFORE DILUTING ACCORDING TO DIRECTIONS.

Do not use on animals receiving an organic phosphate treatment from any other source at the time of treatment.

DO NOT USE, POUR, SPILL OR STORE NEAR HEAT OR OPEN FLAME.

NET CONTENTS: