

U. S. D. A. Reg. No. 4931-63

GOOD-LIFE CHEMICALS, INC.
P. O. BOX 687
EFFINGHAM, ILLINOIS 62401

FOR LAWNS AND SHRUBS: Do not apply to newly seeded lawns. To control chiggers, ants, fleas, use 8 tablespoonsful in 1 gallon water for 250 square feet.

TO CONTROL CRABGRASS IN LAWNS AND ORNAMENTAL TURF: Do not use on newly seeded lawns. Use 10 tablespoonsful in 1 gallon water for 100 square feet of surface. Apply in early spring before crabgrass seeds sprout (late March or early April). Keep children and pets off treated areas until this material has been thoroughly watered into the soil and the grass has completely dried.

TO CONTROL GRASSHOPPERS, CRICKETS, BOXELDER BUGS: Wet foliage of shrubs, thoroughly with mixture of 8 tablespoonsful in 1 gallon water.

TO CONTROL MOSQUITO LARVAE OR ADULT MOSQUITOS: Apply 2 teaspoonsful in 1 gallon water per 1250 square feet of stagnant water where mosquito larvae hatch or spray lawns and shrubs with this solution to control adult mosquitoes. Do not apply to any fish bearing waters.

GARDENS: To control cutworms, earwigs, sowbugs, leaf eating ants, Japanese beetle grubs, wireworms, root maggots, white grubs—use 3 tablespoonsful in 1 gallon water per 250 square feet of soil surface. Soak solution into soil by thorough wetting after application. Moles do not like to work in soil treated with Chlordane.

The following garden crops may be grown in soil treated with the above diluted mixtures: Apply prior to planting or at time of planting or transplanting.

Beans, Beets, Blackeyed Peas, Broccoli, Cabbage, Cauliflower, Corn, Cucumbers, Grapes, Lettuce, Melons, Okra, Peas, Peppers, Potatoes, Radishes, Raspberries, Rutabagas, Squash, Strawberries, Turnips, Tomato. For Grapes, Raspberries and Strawberries, apply preplant or when no fruit is present.

Do not eat or feed treated foliage to livestock.

Manufactured By
GOOD-LIFE CHEMICALS, INC.
GOOD-LIFE DRIVE P. O. BOX 687
EFFINGHAM, ILLINOIS 62401



45% CHLORDANE SPRAY

4 lbs. CHLORDANE per Gallon

CONTROLS



ANTS



JAPANESE BEETLE



MOSQUITO



CHIGGERS



CUT WORMS



COCKROACH

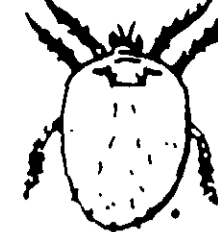
WARNING

KEEP OUT OF REACH OF CHILDREN
See other warnings on side panel.

FOR THE HOME should only be used for spot treatment—To control ants, silverfish, roaches, crickets, spiders, thousand leggers scorpions, use 1/2 lb. of CHLORDANE per gallon of water.

or transplanting.
 Beans, Beets, Blackeyed Peas, Broccoli, Cabbage, Cauliflower, Corn,
 Cucumbers, Grapes, Lettuce, Melons, Okra, Peas, Peppers, Potatoes,
 Radishes, Raspberries, Rutabagas, Squash, Strawberries, Turnips, To-
 mato. For Grapes, Raspberries and Strawberries, apply preplant or
 when no fruit is present.
 Do not eat or feed treated foliage to livestock.

Manufactured By
GOOD-LIFE CHEMICALS, INC.
 GOOD-LIFE DRIVE P. O. BOX 687
 EFFINGHAM, ILLINOIS 62401



CHIGGERS



CUTWORMS



COCKROACH

WARNING
 KEEP OUT OF REACH OF CHILDREN
 See other warnings on side panel

FOR THE HOME: Should only be used for spot treatment—To control
 ants, silverfish, roaches, crickets, spiders, thousand leggers scorpions,
 use 1/2 tablespoonsful CHLORDANE 45% in 1 gallon water,
 in cracks along baseboards door sills, behind shelving, and here-
 ever insects are seen or hide and breed.

TERMITES: Apply 1 to 2 gal. in 100 gal. water. Apply at the rate
 of 1 gal. per linear foot to a trench dug next to the foundation 1 to
 2 feet deep and 8 inches wide. For buildings with deep footings,
 dig trench 30 inches deep. Do not dig trench below the level of the
 footing. Inspect area yearly to determine possible reinfestation.

CAUTION: Harmful if swallowed. Contact with skin can cause toxic
 symptoms. Avoid breathing spray mist. In case of contact with
 skin, wash with soap and water. Avoid contamination of feed or
 foodstuffs. **KEEP OUT OF REACH OF CHILDREN.**

Toxic to fish and wildlife. Keep out of lakes, streams or ponds.
 Birds feeding on treated areas may be killed.

Apply this product only as specified on this label.

Rinse equipment and containers and dispose of wastes by burying
 in non-crop lands away from water supplies. Containers should be
 disposed of by burying with wastes.

This product is highly toxic to bees exposed to direct treatment or
 residues on crops. Protective information may be obtained from
 your cooperative agricultural Extension Service.

NOTICE: Buyer assumes all risks of use, storage or handling of this
 material not in strict accordance with directions given herewith.

ACTIVE INGREDIENTS:

Technical Chlordane	46.0%
Petroleum Hydrocarbons	49.0%

INERT INGREDIENTS.	5.0%
TOTAL	100.0%

*Equivalent to 27.6% octachloro 4, 7 methanotetrahydroindane and
 18.4% related compounds

USDA Reg. No. 4931-63

Net Contents 1 Pint

20 25, NTC
ACCEPTED
 DEPT. OF AGRICULTURE
 OFFICE OF PEST CONTROL
 4931-63 SUBJECT
 PESTICIDES