



CHLORDANE DUST 6%

8-23-72
4931-62

CONTROLS



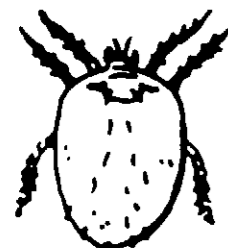
ANTS



JAPANESE BEETLE



MOSQUITO



CHIGGERS



CUT WORMS



COCKROACH

ACTIVE INGREDIENT:

*Technical Chlordane 6%

INERT INGREDIENTS 94%

TOTAL 100%

*Equivalent to 3.6% Octachloro-4,7-Methanotetrahydroindane and 2.4% related compounds.

CAUTION

KEEP OUT OF REACH OF CHILDREN

See caution statement otherside of package.

NET CONTENTS 1 POUND

DIRECTIONS FOR USING CHLORDANE DUST 6%

Apply directly from can or dust gun.

LAWNS:

To control Chiggers, Mosquitoes, and Ants, apply one pound for each 500 square feet. Repeat as necessary.

To control Japanese Beetles, Grubs, White Grubs and Sod Web Worms, apply one pound for each 250 square feet. Keep children and pets off treated areas until this material has been thoroughly watered into the soil and grass has completely dried.

PREPLANTING SOIL APPLICATION OR FOR USE AT TIME OF PLANTING OR TRANSPLANTING

To control Corn Rootworms, Seed Corn Beetles, White Fringed Beetle, Root Maggots, White Grubs, Wireworms, apply one and one-half pounds worked or watered into 600 feet of area. Beans, Beets, Black-eyed peas, Brocoli, Cabbage, Corn, Cauliflower, Grapes, Lettuce, Melons, Okra, Peas, Peppers, Potatoes, Radishes, Raspberries, Rutabagas, Squash, Strawberries, Turnips, Tomatoes may be grown in treated soil.

POST EMERGENCE TREATMENT:

To control Flea Beetles, Green Stink Bugs, Imported Cabbage Worms, Cabbage Loopers, Cabbage Maggots, Cutworms, Earwigs, Leaf Cutting Ants, Mole Crickets, Strawberry Weevils.

Use 1 pound per 1300 square feet on or around the following plants: Beans, Brocoli, Cabbage, Cauliflower, Cucumbers, Lettuce, Melons, Peppers, Radishes, and Strawberries. Do not apply after edible parts begin to form.

Use 1 pound per 600 square feet on Tomatoes. Do not apply after fruit begins to form.

Use 1 pound per 1800 square feet on Sweet Corn and Peas. Apply primarily to silks on Sweet Corn. Do not apply within 15 days of harvest on Peas. Do not feed treated forage to dairy animals or animals being finished for slaughter.

FOR ORNAMENTALS AND FLOWERS:

To control Grasshoppers, Leaf Beetles, Leafminers, Lace Bugs, Thrips, Rose Chafers on Roses, Shrubs and Flowers. Dust directly from can or dust gun. Repeat as needed.

BULB TREATMENT:

To control Thrips on Dahlia, Gladiolus, Hyacinth and Tulips, dust bulbs directly from can or dust gun or place bulbs in paper bag, add dust and shake vigorously prior to winter storage.

FOR THE HOME:

To control Ants, Silverfish, Cockroaches, Crickets, Spiders, Thousand Leggers (Millipedes), Scorpions, dust in cracks along baseboards, door sills, behind shelving, window sills and wherever insects are seen, hide, and breed.

Carpet Beetles may be controlled by a thorough dusting of infested areas of carpets, localized areas of floors and baseboards, into cracks and under carpets where carpet beetles may be found. Repeat applications as often as necessary to maintain effective control.

Box Elder Bugs may be repelled when dust is applied on window sills and any other openings into the home.

CAUTION

This material if taken internally can cause toxic symptoms. Avoid inhalation of dust. Do not apply where contamination of foodstuffs or cooking utensils might occur. In case of skin contact, wash promptly with soap and water.

Dust only in areas not accessible to children and pets.

Do not use in edible products areas of food processing plants, restaurants or other areas where food is commercially prepared or processed. Do not use in serving areas while food is exposed.

Do not reuse empty container. Destroy it by burying with waste or burning. Stay away from smoke and fumes.

This product is poisonous to fish and wildlife. Keep out of lakes, ponds and streams.

Birds feeding on treated areas may be killed.

This product is highly toxic to bees exposed to direct treatment or residues on crops. Protective information may be obtained from your Cooperative Agricultural Extension Service.

Do not apply in any manner not specified on the label.

NOTICE Buyer assumes all risks of use, storage or handling of this material not in strict accordance with directions given herewith.

EPA REG. NO. 4931-62

Manufactured By

GOOD-LIFE CHEMICALS, INC.
GOOD-LIFE DRIVE P. O. BOX 687
EFFINGHAM, ILLINOIS 62401