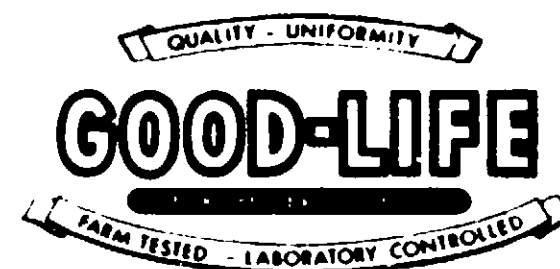


REGISTERED

TRADE MARK

170-58



## DAIRY COW DUST



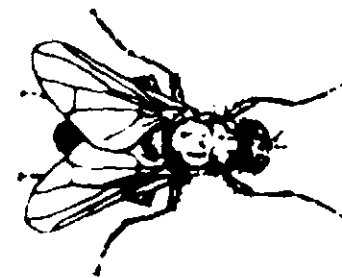
**WARNING**  
KEEP OUT OF REACH OF CHILDREN  
See caution statement otherside of package.

U.S.D.A. REG No. 4931-58

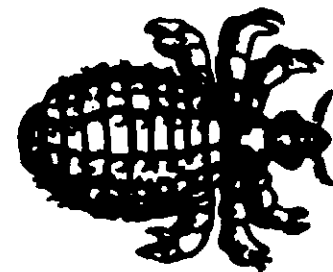
# DAIRY COW DUST

(Contains Methoxychlor)

## FOR THE CONTROL OF



HORN FLIES



LICE

### ACTIVE INGREDIENTS:

\*Methoxychlor, Technical ..... 11.00%

INERT INGREDIENT: (Talc) ..... 89.00%

TOTAL ..... 100.00%

\*11% Methoxychlor, Technical is equivalent to 9.68% 2,2 bis (p-methoxyphenyl)-1,1,1-trichloroethane and 1.32% other isomers and reaction products.

### DIRECTIONS

#### For Use On Dairy Cows:

For control of horn flies on dairy cows, use 4 or 5 tablespoonsful on each animal — sprinkle on poll, neck, (top sides), back and upper sides. Rub in by hand to be sure powder is carried beneath the hair to the skin. One treatment offers protection against horn flies for two to three weeks. Do not apply to dairy cows as a spray or dip.

FOR CONTROL OF HORN FLIES, LICE, AND FLEAS ON BEEF CATTLE, SHEEP AND HOGS: A thorough OVERALL application of DAIRY COW DUST should be made with dust gun or by hand. In addition, it is also advisable to thoroughly dust animal quarters to insure control of fleas.

For most effective dairy fly control, barns and premises (breeding places of flies, such as manure piles, etc.) should be sprayed to kill house flies, stable flies and certain other insects, which infest the barn and are not controlled by dusting the cows, sheep and hogs.

DAIRY COW DUST is a highly effective residual insecticide, and it remains active for several weeks. Flies sitting on treated surfaces pick up enough methoxychlor to kill them within a few hours.

### WARNING:

Avoid contamination of fish bearing waters by dust or residues that may drift or wash into water. Keep out of reach of children.

NOTICE: Seller makes no warranty, expressed or implied, concerning the use of this product other than indicated on the label. Buyer assumes all risk of use and/or handling of this material when such use and/or handling is contrary to label instructions.

Manufactured by

**GOOD-LIFE CHEMICALS, INC.**

Good-Life Drive, Box 687

EFFINGHAM, ILLINOIS

NET CONTENTS 1 POUND

NOV-13-1968