

TERMITE CONTROL — SPECIFIC DIRECTIONS FOR COMMERCIAL OPERATORS

NET CONTENTS _____

MIXING DIRECTIONS

Mix Dieldrin 1.5 lb. Emul. Conc. with water by agitation; agitate the mixture while spraying. If allowed to stand, reagitrate before use.

DILUTION CHART

INSECT	Amt. 1.5 lb. Dieldrin	Gals. Water
Termites (Use .3% solution or ratio 1 to 60)	10½ vi. oz.	suff. water for 5 gal.
	3 qts. 9 oz.	suff. water for 50 gal.

Use .3% solution of 1.5 lb. Dieldrin E. C. as directed on dilution chart and apply at the following rate:

(A) Buildings with Crawl Spaces

- (1) Apply 2 gallons per 5 linear ft. to critical areas only under the house, such as along the inside of foundation walls, around piers, sewer pipes, conduits, etc. Trench according to directions in part (2) below.
- (2) Along the outside of foundation walls, dig a narrow trench with a band no wider than six (6) inches, such trench to be dug no deeper than the top of the footings. If the trench is less than 15 inches in depth to the top of the footings, apply 1 gal. per 5 linear feet. Replace the soil and apply another 1 gal. per 5 linear feet to the back fill. Cover the back fill with a layer of soil. If the trench is more than 15 inches in depth to the top of the footings, apply 2 gals. per 5 linear feet. Replace the soil and apply another 2 gals. per 5 linear feet to the back fill. Cover the back fill with a layer of soil. A trench 30 inches deep is a maximum depth required alongside those foundations where the top of the footings is greater than 30 inches deep.
- (3) Apply 1 gal. per 10 sq. ft. of soil surface under attached porches, entrance platforms, utility entrances and similar situations where slab or fill is at the grade level. Where crawl spaces exist, treat as described in part (1) above.

(B) Buildings with Concrete Slab on the Ground

- (1) Apply 1 gal. per 10 sq. ft. as an over-all treatment under the slab as well as under attached porches, entrance platforms, utility entrances, and similar situations where slab or fill is at grade level.
- (2) Apply 2 gals. per 5 linear feet to critical areas only under the slab, such as along the inside of founda-

tion walls, around sewer pipes, conduits, etc. Trench as in part (3) below.

- (3) Along the outside of foundation walls, dig a narrow trench with a band no wider than six (6) inches, such trench to be dug no deeper than 15 inches. Apply 1 gal. per 5 linear feet. Replace the soil and apply another 1 gal. per 5 linear feet to the back fill. Cover the back fill with a layer of soil.

(C) Buildings with Basements

- (1) Apply 1 gal. per 10 sq. ft. as an over-all treatment under the basement flooring, as well as under attached porches, entrance platforms, utility entrances, and similar situations where slab fill is at the grade level. Where crawl spaces exist, treat as described in (2) below.
- (2) Apply 2 gals. per 5 linear ft. to critical areas only under the basement flooring, as well as porches and entrances having crawl spaces, such as along the inside of foundation walls, around sewer pipes, conduits, piers, etc.
- (3) Trench and treat according to directions given in (A) (2) above.

(D) Preconstruction Treatment of Buildings

- (1) Treat areas that will be under concrete slabs or crawl spaces at the rate of 1 gal. per 10 sq. ft. If concrete slab is not poured shortly thereafter on the same day or foundation walls are not erected prior to treatment or on the same day, a polyethylene sheeting or other waterproof material shall be placed over the treated soil.
- (2) Treat other areas as prescribed in A-2.

Inspect treated building annually for possible reinfestation by termites.

May be used in conventional hydraulic sprayers or low volume ground applicators.



DIELDRIIN 1.5 lb. EMULSIFIABLE CONCENTRATE

WARNING

KEEP OUT OF REACH OF CHILDREN

(SEE WARNING ON SIDE PANEL)

PRO
DO NOT re-use
in an isolated
METAL CONT
lowing mixture
5-gallon drums—
30-gallon drums—
55-gallon drums—
Rotate container
in an isolated ar
DO NOT use coi
(Caution: Handl
and carefully fol
Punch holes in t

Destroy by per

D

ACTIVE INGREDIENTS:	
Dieldrin*	17.84%
Heavy Aromatic Naphtha	77.16%
INERT INGREDIENTS	5.00%
	100.00%

*15.16% Hexachloroepoxyoctahydro-endo, exo-dimethano-naphthalene
*2.68% Related Compounds
Contains 1.5 lbs. Dieldrin per U. S. Gallon at 68°-F

Manufactured by
STEPHENSON CHEMICAL CO., INC.
COLLEGE PARK, GEORGIA

TERMITE CONTROL — SPECIFIC DIRECTIONS FOR COMMERCIAL OPERATORS

NET CONTENTS

MIXING DIRECTIONS

Mix Dieldrin 1.5 lb. Emul. Conc. with water by agitation; agitate the mixture while spraying. If allowed to stand, reagitrate before use.

DILUTION CHART

INSECT	Amt. 1.5 lb. Dieldrin	Gals. Water
Termite (Use .3% solution or ratio 1 to 60)	10 1/2 oz.	suff. water for 5 gal.
	3 qts. 9 oz.	suff. water for 50 gal.

Use .3% solution of 1.5 lb. Dieldrin E. C. as directed on dilution chart and apply at the following rate:

(A) Buildings with Crawl Spaces

- Apply 2 gallons per 5 linear ft. to critical areas only under the house, such as along the inside of foundation walls, around piers, sewer pipes, conduits, etc. Trench according to directions in part (2) below.
- Along the outside of foundation walls, dig a narrow trench with a band no wider than six (6) inches, such trench to be dug no deeper than 15 inches. Apply 1 gal. per 5 linear feet. Replace the soil and apply another 1 gal. per 5 linear feet to the back fill. Cover the back fill with a layer of soil. If the trench is more than 15 inches in depth to the top of the footings, apply 2 gals. per 5 linear feet. Replace the soil and apply another 2 gals. per 5 linear feet to the back fill. Cover the back fill with a layer of soil. A trench 30 inches deep is a maximum depth required alongside those foundations where the top of the footings is greater than 30 inches deep.
- Apply 1 gal. per 10 sq. ft. of soil surface under attached porches, entrance platforms, utility entrances and similar situations where slab or fill is at the grade level. Where crawl spaces exist, treat as described in part (1) above.

(B) Buildings with Concrete Slab on the Ground

- Apply 1 gal. per 10 sq. ft. as an over-all treatment under the slab as well as under attached porches, entrance platforms, utility entrances, and similar situations where slab or fill is at grade level.
- Apply 2 gals. per 5 linear feet to critical areas only under the slab, such as along the inside of founda-

tion walls, around sewer pipes, conduits, etc. Trench as in part (3) below.

- Along the outside of foundation walls, dig a narrow trench with a band no wider than six (6) inches, such trench to be dug no deeper than 15 inches. Apply 1 gal. per 5 linear feet. Replace the soil and apply another 1 gal. per 5 linear feet to the back fill. Cover the back fill with a layer of soil.

(C) Buildings with Basements

- Apply 1 gal. per 10 sq. ft. as an over-all treatment under the basement flooring, as well as under attached porches, entrance platforms, utility entrances, and similar situations where slab fill is at the grade level. Where crawl spaces exist, treat as described in (2) below.
- Apply 2 gals. per 5 linear ft. to critical areas only under the basement flooring, as well as porches and entrances having crawl spaces, such as along the inside of foundation walls, around sewer pipes, conduits, piers, etc.
- Trench and treat according to directions given in (A) (2) above.

(D) Preconstruction Treatment of Buildings

- Treat areas that will be under concrete slabs or crawl spaces at the rate of 1 gal. per 10 sq. ft. If concrete slab is not poured shortly thereafter on the same day or foundation walls are not erected prior to treatment or on the same day, a polyethylene sheeting or other waterproof material shall be placed over the treated soil.
- Treat other areas as prescribed in A-2.

Inspect treated building annually for possible reinfestation by termites.

May be used in conventional hydraulic sprayers or low volume ground applicators.

WARNING

Hazardous if swallowed, inhaled or absorbed through skin! Do not breathe spray mist. Do not allow contact with skin, eyes or clothing. In case of contact, immediately remove contaminated clothing and flush skin or eyes with plenty of water; for eyes get medical attention. Wash thoroughly with soap and water after handling and before eating or smoking; wear clean clothing. During commercial or prolonged exposure in spray-mixing and loading operations, wear clean syn-

thetic rubber gloves and a mask or respirator of a type approved by the U. S. Bureau of Mines for Dieldrin protection. Do not apply or allow to drift to areas occupied by unprotected humans or animals. Do not contaminate food, utensils, dishes, or drinking water. Do not apply to humans, pets, or birds or near fish bowls. Keep out of reach of children. Use this product only for recommended purposes and at recommended dosages.

STEPHENSON

Chemicals

DIELDRIN 1.5 lb. EMULSIFIABLE CONCENTRATE

WARNING

KEEP OUT OF REACH OF CHILDREN

(SEE WARNING ON SIDE PANEL)

ACTIVE INGREDIENTS
Dieldrin[®] 2.4%
Heavy Aromatic Naphthalene 12.6%
INERT INGREDIENTS 85.0%

Contains 1.5 lbs. Dieldrin per U.S. Gallon at 68° F.

Manufactured by
STEPHENSON CHEMICAL CO., INC.
COLLEGE PARK, GEORGIA

PROC

DO NOT re-use t
in an isolated loc
METAL CONTAI
ing mixture in
5-gallon drums—2
5-gallon drums—1
Rotate container (i
in an isolated are
DO NOT use cont
Caution. Handle
and carefully follo
Punch holes in the

Destroy by perf

DO

Seller
other
this m

EPA Reg.

CIAL OPERATORS

If allowed to stand, reagitate

wer pipes, conduits, etc. Trench
foundation walls, dig a narrow
no wider than six (6) inches,
no deeper than 15 inches. Ap-
r feet. Replace the soil and ap-
r 5 linear feet to the back fill.
ith a layer of soil.

sq. ft. as an over-all treatment
flooring, as well as under at-
rance platforms, utility en-
situations where slab fill is at
re crawl spaces exist, treat as
w.
linear ft. to critical areas only
looring, as well as porches and
el spaces, such as along the in-
alls, around sewer pipes, con-

ording to directions given in
t of Buildings
ll be under concrete slabs or
rate of 1 gal. per 10 sq. ft. If
oured shortly thereafter on the
ion walls are not erected prior
the same day, a polyethylene
waterproof material shall be
ed soil.

prescribed in A-2.
ially for possible reinfestation
hydraulic sprayers or low vol-

ask or respirator of a type ap-
/ Mines for Dieldrin protection.
ft to areas occupied by unpro-
not contaminate food, utensils,
not apply to humans, pets, or
p out of reach of children. Use
ended purposes and at recom-

NET CONTENTS

STEPHENSON
Chemicals

DIELDRIIN 1.5 lb.
EMULSIFIABLE CONCENTRATE

WARNING

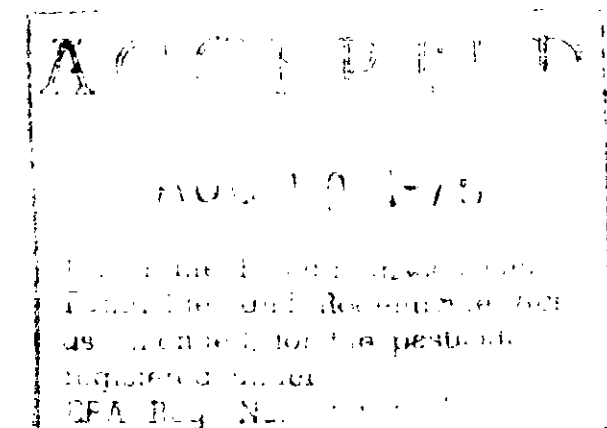
KEEP OUT OF REACH OF CHILDREN

(SEE WARNING ON SIDE PANEL)

ACTIVE INGREDIENTS	
Dieldrin	17.84%
Heavy Aromatic Naphtha	77.16%
INERT INGREDIENTS	5.00%
	100.00%
Net Content: 1.5 lb. Dieldrin per 1.5 Gallon at 68°F	

ENVIRONMENTAL CAUTIONS

This product is toxic to fish, birds, and other wildlife.
Birds and other wildlife in treated areas may be killed.
Keep out of lakes, streams, and ponds.
Do not apply where runoff is likely to occur.
Do not apply when weather conditions favor drift from areas treated.
Do not contaminate water by cleaning of equipment, or disposal of wastes.
Apply this product only as specified on this label.



PROCEDURES FOR DECONTAMINATION AND SAFE DISPOSAL OF EMPTY CONTAINERS

DO NOT re-use the container. Completely empty the contents and bury the unused chemical at least 18 inches deep in an isolated location away from water supplies.

METAL CONTAINERS— FIVE-GALLON, THIRTY GALLON, and FIFTY-FIVE GALLON DRUMS—Pour the following mixture into the empty container.

5-gallon drums—2 qts. water, 1/2 cup caustic soda (household lye), 1 cup detergent

30-gallon drums—3 gallons water, 1 pound caustic soda (household lye), 1 cup detergent

55-gallon drums—5 gallons water, 2 pounds caustic soda (household lye), 1 cup detergent.

Rotate container carefully until all inner surfaces are thoroughly wet. Bury the rinse solution at least 18 inches deep in an isolated area away from water supplies.

DO NOT use container in any connection with feed, food, or drinking water.

(Caution: Handle caustic soda (household lye) with extreme care. Do not get on skin, in eyes, or in clothing. Read and carefully follow the precautions on the package.

Punch holes in the top and the bottom of the container in an isolated area.

IF THE ABOVE RINSE METHOD CANNOT BE USED—

Destroy by perforating or crushing and burying in a safe place away from water supplies.

DO NOT USE, POUR, SPILL OR STORE NEAR HEAT OR OPEN FLAME

NOTICE

Seller makes no warranty, expressed or implied, concerning the use of this product other than indicated on the label. Buyer assumes all risk of use and/or handling of this material when such use and/or handling is contrary to label instructions.

EPA Reg. No. 4887-175

EPA Est. 4887-GA-1

Manufactured by
STEPHENSON CHEMICAL CO., INC.
COLLEGE PARK, GEORGIA

NET CONTENTS _____



ENVIRONMENTAL CAUTIONS

This product is toxic to fish, birds, and other wildlife.
 Birds and other wildlife in treated areas may be killed.
 Keep out of lakes, streams, and ponds.
 Do not apply where runoff is likely to occur.
 Do not apply when weather conditions favor drift from areas treated.
 Do not contaminate water by cleaning of equipment, or disposal of wastes.
 Apply this product only as specified on this label.

ACCEPTED
 AUG 19 1975
 Under the Federal Insecticide, Fungicide, and Rodenticide Act, as amended, for the pesticide registered under EPA Reg. No. 4887-175

PROCEDURES FOR DECONTAMINATION AND SAFE DISPOSAL OF EMPTY CONTAINERS

DO NOT re-use the container. Completely empty the contents and bury the unused chemical at least 18 inches deep in an isolated location away from water supplies.

METAL CONTAINERS — FIVE-GALLON, THIRTY-GALLON, and FIFTY-FIVE GALLON DRUMS—Pour following mixture into the empty container.

5-gallon drums—2 qts. water, 1/2 cup caustic soda (household lye), 2 tablespoonfuls detergent.

30-gallon drums—3 gallons water, 1 pound caustic soda (household lye), 1/2 cup detergent.

55-gallon drums—5 gallons water, 2 pounds caustic soda (household lye), 1 cup detergent.

Rotate container carefully until all inner surfaces are thoroughly wet. Bury the rinse solution at least 18 inches deep in an isolated area away from water supplies.

DO NOT use container in any connection with feed, food, or drinking water.

(Caution: Handle caustic soda (household lye) with extreme care. Do not get on skin, in eyes, or on clothing. Read and carefully follow the precautions on the package.)

Punch holes in the top and the bottom of the container, crush the container and bury deeply in an isolated area.

IF THE ABOVE RINSE METHOD CANNOT BE USED—

Destroy by perforating or crushing and burying in a safe place away from water supplies.

DO NOT USE, POUR, SPILL OR STORE NEAR HEAT OR OPEN FLAME.

DIELDRIIN 1.5 lb. EMULSIFIABLE CONCENTRATE

WARNING

KEEP OUT OF REACH OF CHILDREN

(SEE WARNING ON SIDE PANEL)

ACTIVE INGREDIENTS:	
Dieldrin*	17.84%
Heavy Aromatic Naphtha	77.16%
INERT INGREDIENTS	
	5.00%
	100.00%
*15.16% Hexachloroepoxyoctahydro-endo, exo-dimethano-naphthalene	
*2.68% Related Compounds	
Contains 1.5 lbs. Dieldrin per U. S. Gallon at 68°-F	

Seller makes no warranty, expressed or implied, other than indicated on the label. Do not use this material when rain is expected.

EPA Reg. No. 4887-175

Manufactured by
STEPHENSON CHEMICAL CO., INC.
COLLEGE PARK, GEORGIA