

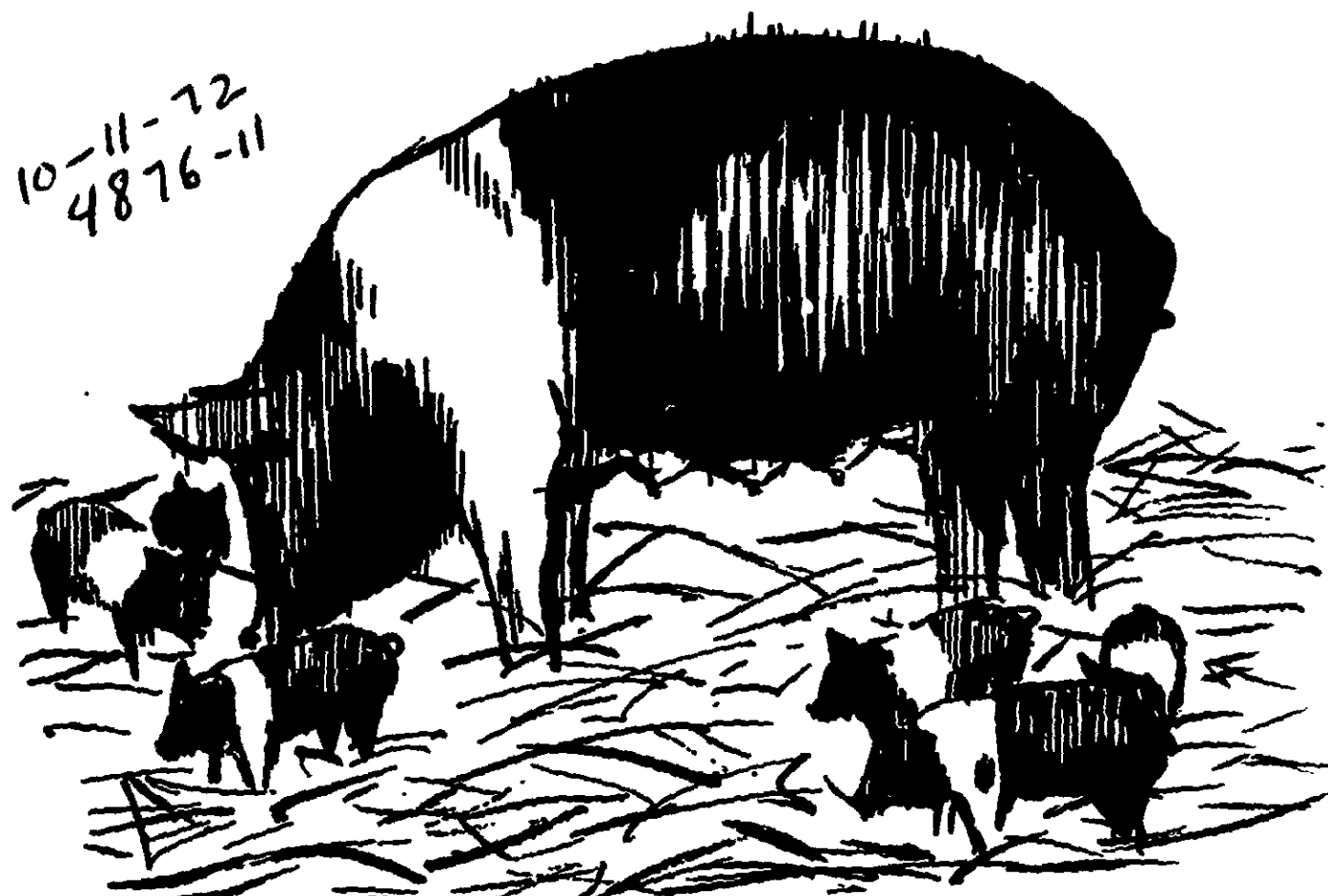


E. P. A. Reg. #4876-11

NET WT. 3 LBS.

HOG LICE GRANULES

10-11-72
4876-11



Caution; Keep out of reach of children
SEE BACK PANEL FOR ADDITIONAL CAUTIONS

Active Ingredient

Ronnel [0,0-dimethyl 0-(2,4,5-trichlorophenyl) Phosphorothioate] 5%

Inert Ingredient 95%

*From technical grade; not suitable for internal use in animals.

***READY TO USE * NO MIXING
*FAST ACTING * LONG LASTING
*ONE APPLICATION * USE ON
ANY AGE SWINE * APPLY TO
BEDDING**

"AG" SUPPLY COMPANY
HOPKINSVILLE, KENTUCKY 42240

PACKAGED BY
"AG" SUPPLY COMPANY
HOPKINSVILLE, KENTUCKY

HOG LICE GRANULES *CONTAINS KORLAN** CONTROLS HOG LICE

10-11-72
4876-11

DIRECTIONS FOR USE

Apply AG. HOG LICE insecticide granules evenly over the bedding for swine at the rate of one half (1/2) lb. per 100 square feet of area. The granules may be applied with a scoop or a can. No mixing with the bedding is necessary. One treatment will control the hog lice infestation when the animals use the bedding regularly. AG. HOG LICE granules may be used on all ages of swine including new born pigs. Replace the treated bedding with clean, untreated bedding or otherwise exclude the swine from the treated bedding two weeks prior to slaughter.

CAUTION

Harmful if swallowed. Avoid contamination of feed, food or water. Avoid skin contact. Avoid inhalation of dust. Wash thoroughly after using. Not suitable for internal use in animals.

Empty bags should be buried or burned. (Stay away from smoke.) If the bags are burned, the ashes should be buried in a safe place.

LIVESTOCK REMEDY—NOT FOR HUMAN USE

*KORLAN — registered trademark of the Dow Chemical Company

U.S. Patent No. 2,599,516

Notice of Warranty:

Seller makes no warranty, expressed or implied concerning the use of this product other than indicated on the label. Buyer assumes all risk of use and/or handling of this material when use and/or handling is contrary to label instructions.

HOG LICE GRANULES *CONTAINS KORLAN** CONTROLS HOG LICE

DIRECTIONS FOR USE

Apply AG. HOG LICE insecticide granules evenly over the bedding for swine at the rate of one half (1/2) lb. per 100 square feet of area. The granules may be applied with a scoop or a can. No mixing with the bedding is necessary. One treatment will control the hog lice infestation when the animals use the bedding regularly. AG. HOG LICE granules may be used on all ages of swine including new born pigs. Replace the treated bedding with clean, untreated bedding or otherwise exclude the swine from the treated bedding two weeks prior to slaughter.

CAUTION

Harmful if swallowed. Avoid contamination of feed, food or water. Avoid skin contact. Avoid inhalation of dust. Wash thoroughly after using. Not suitable for internal use in animals.

Empty bags should be buried or burned. (Stay away from smoke.) If the bags are burned, the ashes should be buried in a safe place.

LIVESTOCK REMEDY--NOT FOR HUMAN USE

*KORLAN — registered trademark of the Dow Chemical Company

U.S. Patent No. 2,599,516

Notice of Warranty:

Seller makes no warranty, expressed or implied concerning the use of this product other than indicated on the label. Buyer assumes all risk of use and/or handling of this material when use and/or handling is contrary to label instructions.

PACKAGED BY
"AG" SUPPLY COMPANY
HOPKINSVILLE, KENTUCKY

0-11-72
100-11