

4822-100

6/4/74

77174

WARNING!...FLAMMABLE

CAUTION: KEEP OUT OF REACH OF CHILDREN

See warnings and cautions on back

Johnson

buggy

whip

®

residual

crawling insect

killer

another great Raid® insecticide

for commercial and industrial use

kills Roaches, Ants, Silverfish, Water bugs, Centipedes

FOR SPRAYING ON SURFACES ONLY

see directions on back

ACTIVE INGREDIENTS: 2-(1-Methylethoxy)phenol methylcarbanate 1.000%;  
petroleum distillate 81.244%  
INERT INGREDIENTS: 17.756%

NET WT 20 OZ (1 LB 4 OZ)

A PRODUCT OF Johnson WAX SERVICE PRODUCTS DIVISION

ACCEPTED  
 4822-100  
 JUN 4 1974

WHILE THIS PRODUCT IS IN COMPLIANCE WITH THE FEDERAL INSECTICIDE ACT FOR THE CONTROL OF PESTS, IT IS SUBJECT TO APPLICABLE REGULATIONS.

◆ Johnson

buggy

whip

residual

another great Raid insecticide

Kills insects on contact . . . kills indoors  
with residual action . . . keeps on killing  
even after it dries.

Flushing action -- drives bugs out from  
where they hide . . . and kills them fast.

Kills roaches indoors -- even resistant  
roaches.

Provides soft spray that doesn't "bounce".  
Power-packed -- for commercial and industrial use.

WARNING! FLAMMABLE

Do not spray near open flame. Do not  
smoke while using. Contents under pressure.  
Never set container on stove, radiator  
or place where temperature will exceed  
120°F, which may cause it to burst. Do not  
puncture or throw container into fire.

DIRECTIONS

Roaches, Water Bugs: Spray until wet in  
cracks, around baseboards and other hiding  
places, hitting insects directly where  
possible. Repeat as required.

Ants: Apply to ant trails, also around door  
and window frames where ants enter building.  
Repeat treatment as required.

Silverfish, Crickets and Centipedes:  
Spray localized areas infested by these  
pests. Repeat as required.

2/4

374

Always spray downward to avoid pressure loss. For controlling insects in places inaccessible with Buggy Whip Residual such as the undersides of shelves and around upper door and window frames, use Johnson Buggy Whip Airborne or Raid Insect Spray.

TO OPERATE

1. Unlock nozzle by rotating counterclockwise.
2. Hold can upside down 1 or 2 feet from surface and spray.

Avoid excess wetting of asphalt tile, rubber and plastic materials.

CAUTION: Harmful or fatal if swallowed. Harmful if inhaled or absorbed through skin. If swallowed, get medical attention (atropine is antidotal). Apply as an indoor surface spray only. Do not use as a space spray,

Do not spray humans, pets, plants, water, foodstuffs, utensils or air in a room. Do not use in commercial food preparation areas or in edible products areas of food processing plants. Keep out of reach of children. Do not allow children or pets to contact treated surfaces until dry. Avoid breathing of spray or contact with skin. Remove pets and cover fish bowls before spraying. Wash thoroughly with soap and water after handling and before eating or smoking.

"Johnson", "RAID", "BUGGY WHIP" and "KIT-in-a-CAN" are trademarks of S. C. Johnson & Son, Inc., Racine, Wis.

©S. C. JOHNSON & SON, INC., RACINE, WIS. 53403 U.S.A.

42410

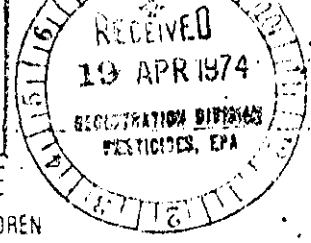
EPA Est. 4822-WI-1

EPA Reg. No. 4822-100-AA

ANOTHER JOHNSON

KIT-in-a-CAN

JUN 4 1974  
 UNDER THE FEDERAL INSECTICIDE  
 FUNGICIDE AND RODENTICIDE ACT  
 FOR ECONOMIC POISON REGISTE-  
 RED UNDER NO. 100000 SUBJECT  
 TO ATTACHED COMMENTS.



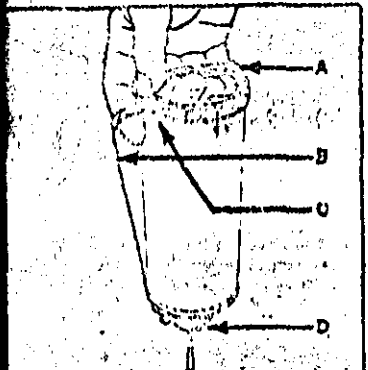
**WARNING!... FLAMMABLE**  
**CAUTION: KEEP OUT OF REACH OF CHILDREN**  
 See directions and cautions on back.

E-141

Johnson

**buggy  
 whip.<sup>®</sup>  
 residual**

another great **Raid** insecticide



**TO OPERATE**

1. Place two or three fingers under Strap A at bottom of container.
2. Insert index finger between trigger strap B and side of container.
3. Brace thumb against handle strap ring C.
4. Rotate nozzle D to unlock trigger.
5. Point valve opening toward surface to be sprayed and pull trigger. Spray until surface is wet.

Avoid excess wetting of asphalt, tile, rubber and plastic materials.

Johnson  
**buggy  
 whip.<sup>®</sup>  
 residual**

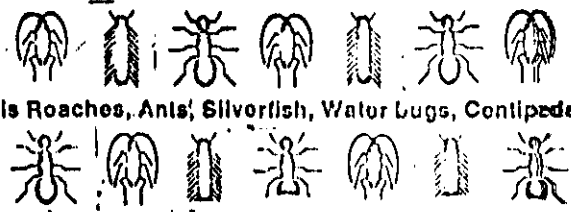
crawling insect

killer



another great **Raid** insecticide

for commercial and industrial use



kills Roaches, Ants, Silverfish, Water Bugs, Centipedes

**FOR SPRAYING ON SURFACES ONLY**  
 see directions on back

ACTIVE INGREDIENTS: o-isopropoxyphenyl Methylcarbamate 1.000%; petroleum distillate 6.24%  
 INERT INGREDIENTS: 17.756%

**NET WT 20 OZ (1 LB 4 OZ)**

A PRODUCT OF JOHNSON WAX SERVICE PRODUCTS DIVISION

Kills insects on contact... kills indoors with residual action... keeps on killing even after it dries.

Flushing action—drives bugs out from where they hide... and kills them fast. Exclusive trigger harness permits pinpoint aim... no stoop... no insecticide on hands.

Kills roaches indoors—even resistant roaches.

Provides soft spray that doesn't "bounce". Power-packed—for commercial and industrial use.

**WARNING! FLAMMABLE**

Do not spray near open flame. Do not smoke while using. Contents under pressure. Never set container on stove, radiator or place where temperature will exceed 120°F which may cause it to burst. Do not puncture or throw container into fire.

**DIRECTIONS**

**Roaches, Water Bugs:** Spray until wet in cracks, around baseboards and other hiding places, hitting insects directly where possible. Repeat as required.

**Ants:** Apply to ant trails; also around door and window sills where ants enter building. Repeat treatment as required.

**Silverfish, Crickets and Centipedes:** Spray localized areas infested by these pests. Repeat as required.

Always spray downward to avoid pressure loss. For controlling insects in places inaccessible with Buggy Whip Residual such as the undersides of shelves and around upper door and window frames, use Johnson Buggy Whip Airborne or Raid Insect Spray.

**CAUTION:** Harmful or fatal if swallowed. Harmful if inhaled or absorbed through skin. If swallowed, induce vomiting immediately. Get medical attention (atropine is antidote). Apply as an indoor surface spray only. Do not use as a general spray.

**CAUTION (con't)**

Do not spray humans, pets, plants, water, foodstuffs, utensils or air in a room. Do not use in commercial food preparation areas or in edible products areas of food processing plants. Keep out of reach of children. Do not allow children or pets to contact treated surfaces until dry. Avoid breathing of spray or contact with skin. Remove pets and cover fish bowls before spraying. Wash thoroughly with soap and water after handling and before eating or smoking.

Johnson, RAID, BUGGY WHIP, and KIT-in-a-CAN are trademarks of S. C. Johnson & Son, Inc., Racine, Wis. © S.C. JOHNSON & SON, INC. RACINE, WIS 53403 U.S.A.

42808 EPA Reg. No. 4822-100 EPA Est. 4822-WI-1

