



SUMANONE™ NO. 1 E. C.

CODE 723.40

CONTAINS SUMITHION

667
EPA Reg. No. 4816-~~2000~~ EPA Est. No. 279-NY-1

**INSECTICIDE FOR USE ONLY BY
PROFESSIONAL APPLICATORS IN
INSECT CONTROL**

CONTROLS: Cockroaches, Silverfish, Firebrats, Crickets, Cigarette Beetles, Confused Flour Beetles, Centipedes, Millipedes, Scorpions, Sowbugs, Earwigs, Grain Mites, Pillbugs, Tarantulas, Spiders and Ants.

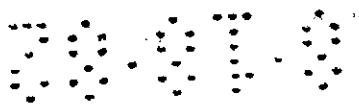
ACTIVE INGREDIENTS:

| | |
|--|---------------|
| O,O-Dimethyl O-(4-nitro-m-tolyl) phosphorothioate..... | 76.97 |
| Aromatic Petroleum Derivative Solvent..... | 7.37 |
| INERT INGREDIENTS: | 15.87 |
| | <u>100.0%</u> |

SUMANONE - Trademark of Fairfield American Corporation

SUMITHION - Registered trademark of Sumitomo Chemical America, Inc.

**KEEP OUT OF REACH OF CHILDREN
WARNING**
See side panel for additional precautionary statements



NET CONTENTS:
.....

DIRECTIONS FOR USE

It is a violation of Federal law to use this product in a manner inconsistent with its labeling.

For control of cockroaches, silverfish, firebrats, crickets, cigarette beetles, confused flour beetles, centipedes, millipedes, scorpions, sowbugs, earwigs, grain mites, pillbugs, tarantulas, spiders and ants, dilute this product with water as shown below to make a 1% spray and apply as directed.

| Gallons of Finished Spray Required | Amount of Sumanone No. 1 E.C. Required |
|------------------------------------|--|
| 1 | 1 1/4 fl. oz. |
| 2 | 2 1/2 fl. oz. |
| 3 | 3 3/4 fl. oz. |
| 10 | 12 1/4 fl. oz. |

Apply as a coarse low pressure spot spray, or apply with a paint brush to areas where these insects hide such as baseboards, storage areas, around water pipes, behind and under refrigerators, cabinets, sinks and stoves, the underside of shelves, drawers and similar areas, behind and below lockers, pallets and similar areas where these insects hide or through which they may enter. Treated area should be inspected 2 to 4 weeks after initial application.

Ants: Spray trails, nests and points of entry. Spray on ants where possible. Repeat as necessary.

PRODUCT INFORMATION

Sumanone No. 1 E.C. is an emulsifiable concentrate containing 8 lbs. of Sumithion per gallon. After dilution with water it is intended for use by Professional Applicators for residual insect control in buildings and structures and in modes of transport. Permitted areas of use include, but are not limited to: stores, warehouses, industrial buildings, houses, apartment buildings, and on vessels, aircraft, rail cars, buses, trucks and trailers.

The solvent used in this information is a petroleum distillate which may stain certain plastic, rubber, and asphalt materials such as tiles and floor coverings. Use caution when treating such materials. Care should also be taken to avoid spotting of wallpaper and fabrics.

STORAGE AND DISPOSAL

Do not contaminate water, food or feed by storage or disposal.

PESTICIDE DISPOSAL: Pesticide, spray mixture or rinse water that cannot be used according to label instructions must be disposed of according to applicable Federal, State or local procedures.

CONTAINER DISPOSAL: Triple rinse (or equivalent) then offer for recycling or reconditioning, or puncture and dispose of in a sanitary landfill, or by other approved State and local procedures.

PRECAUTIONARY STATEMENTS HAZARDS TO HUMANS & DOMESTIC ANIMALS

WARNING

May be fatal if swallowed. Harmful if inhaled or absorbed through skin. Do not breathe vapors. Do not get in eyes, on skin or on clothing. Thoroughly wash skin or clothing with soap and water if they become contaminated.

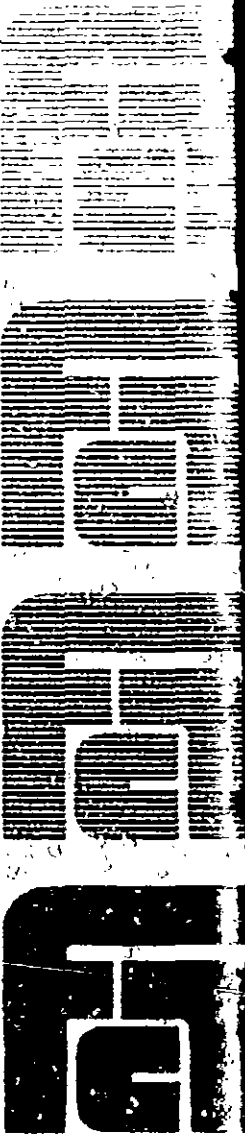
When used in dwellings, avoid deposits which could be frequently contacted by children. Do not permit children or pets in treated areas until surfaces are dry.

Do not use in kitchens of food serving areas while food is exposed. Do not use in edible product areas of food processing plants, restaurants or other areas where food is commercially prepared or processed. Do not use in serving areas of food handling establishments.

Keep out of domestic or animal water supplies.

Do not store or transport with food or animal feed.

SEE REVERSE SIDE



**FAIRFIELD
AMERICAN
CORPORATION**
1932 5th Ave.
New York, N.Y.

STATEMENT OF PRACTICAL TREATMENT

If poisoning occurs or is suspected immediately start the recommended procedures below and simultaneously contact a physician, the nearest hospital, or a poison control center for advice.

NOTE: Be sure to advise the physician that the compound is a cholinesterase inhibitor and follow his or her advice.

FIRST AID: If swallowed, do NOT induce vomiting. This product contains hydrocarbon solvent. Immediately give large quantities of water. If vomiting does occur, give fluids again. Do not induce vomiting or give anything by mouth to an unconscious person. Call a physician immediately.

For eye contact, hold eyelids apart and flush eyes with large amounts of running water. Get medical attention.

For skin contact, flush with plenty of water for at least 15 minutes. Remove contaminated clothing and shoes. Get medical attention if irritation occurs. Wash clothing before reuse.

If inhaled, remove from contaminated atmosphere. Get medical attention if respiratory irritation occurs.

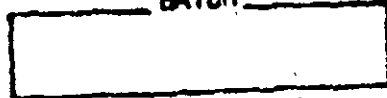
NOTE TO PHYSICIAN: Atropine by injection is antidotal. 2-PAM is also antidotal when administered early and in conjunction with atropine.

PHYSICAL HAZARDS

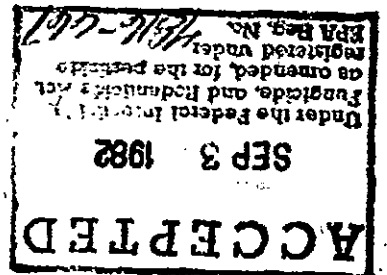
Combustible. Do not use, pour, spill or store near heat or open flame. Keep container closed when not in use.

Buyer assumes all risks of use, storage or handling of this material not in strict accordance with directions given hereon.

BATCH



Printed in U.S.A.



2.99.4.18 PM 8.11

CODE 723.40

SUMANONE™ NO. 1 E. C.

1-10

CONTAINS SUMITHION®

REG. NO. 4817-1 EPA EST. NO. 17-534-1

**INSECTICIDE FOR USE ONLY BY
PROFESSIONAL APPLICATORS IN
INSECT CONTROL**

DIRECTIONS FOR USE

It is a violation of Federal law to use this product in a manner inconsistent with its labeling.

For control of cockroaches, silverfish, firebrats, crickets, cigarette beetles, confused flour beetles, centipedes, millipedes, scorpions, spiders, earwigs, grain mites, pillbugs, termites, spiders and ants dilute this product with water as shown below to make a 1% spray and apply as directed.

1 gallon of water 14 fl. oz.
2 gallons of water 28 fl. oz.
3 gallons of water 42 fl. oz.
4 gallons of water 56 fl. oz.

Apply as a coarse low pressure spray or apply with a paint brush to areas where these insects hide such as basements, storage areas, around water pipes, behind and under refrigerators, cabinets, sinks and stoves, the underside of tables, chairs and similar areas, behind and below bookshelves, pallets and similar areas. Apply to these insects hide for the best results. Do not enter treated areas until the insects have died after which apply a fresh coat.

Do not use this product in areas where children, pets or livestock are present.

PRODUCT INFORMATION

Sumanone No. 1 E.C. is a contact insecticide which kills insects on contact. It is effective against a wide range of insects including cockroaches, silverfish, firebrats, crickets, cigarette beetles, confused flour beetles, centipedes, millipedes, scorpions, spiders, earwigs, grain mites, pillbugs, termites, spiders and ants. It is also effective against ticks and fleas. Sumanone No. 1 E.C. is a white powder which is easily applied to surfaces. It is non-flammable and non-toxic to humans and animals when used as directed. It is also non-persistent and breaks down rapidly in sunlight and air.

STORAGE AND DISPOSAL

Do not contaminate water, food or feed by storage or disposal.

PESTICIDE DISPOSAL
Pesticide, spray mixture or rinse water that cannot be used according to label instructions must be disposed of according to applicable Federal, State or local procedures.

CONTAINER DISPOSAL
Triple rinse (or equivalent) then offer for recycling or reconditioning, or puncture and dispose of in a sanitary landfill, or by other approved State and local procedures.

PRECAUTIONARY STATEMENTS HAZARDS TO HUMANS & DOMESTIC ANIMALS

WARNING

May be fatal if swallowed. Harmful if inhaled or absorbed through skin. Do not breathe vapors. Do not get in eyes, on skin or on clothing. Thoroughly wash skin or clothing with soap and water if they become contaminated.

Keep out of reach of children. Avoid deposits which could be frequently contacted by children, pets, or livestock or pets in treated areas until surfaces are dry.

Do not use in dwellings or in serving areas. Do not use in areas where children, pets, or livestock are present. Do not use in areas of food or feed handling establishments.

Keep out of reach of children and water supply.

Do not use in areas where children, pets, or livestock are present.

**KEEP OUT OF REACH OF CHILDREN
WARNING**
For information on this product and its use, see the label and the instructions on the container.

BEST AVAILABLE COPY

SEE REVERSE SIDE

ACCEPTED

SEP 3 1982

Under the Federal Insecticide,
Fungicide, and Rodenticide Act,
as amended, for the pesticide
registered under

EPA Reg. No. 4516-667

242