

Reg # 4816-597 PM-15 CODE 724.65

193

DIAZINON 12.5%

EMULSIFIABLE CONCENTRATE

EPA Reg. No. 4816-597 EPA Est. No. 279-NY-1

Only for Sale To, Use and Storage by Lawn-care and Maintenance Personnel

LAWN & GARDEN INSECT CONTROL

ACTIVE INGREDIENTS

Diazinon	12.50%
INERT INGREDIENTS	87.50%
	100.00%

*O,O-dimethyl O-(2-isopropyl-5-methyl-1-pyrimidinyl) phosphorothioate

KEEP OUT OF REACH OF CHILDREN
CAUTION

See side panel for additional precautions.

DIRECTIONS FOR USE

It is a violation of Federal law to use this product in a manner inconsistent with its labeling.

This emulsifiable concentrate is to be diluted with water.

HOW TO MIX AND APPLY

Determine the size of spraying job for lawns and vegetables, measure the area to be sprayed. For all other applications, apply as thorough cover spray. Make applications when insects appear. Repeat application as needed or indicated in the specific site and pest directions. Be sure to observe pre-harvest intervals for fruits and vegetables.

Step 1
Clean sprayer. Carefully measure and mix the amount of product and water as given in the rate chart.

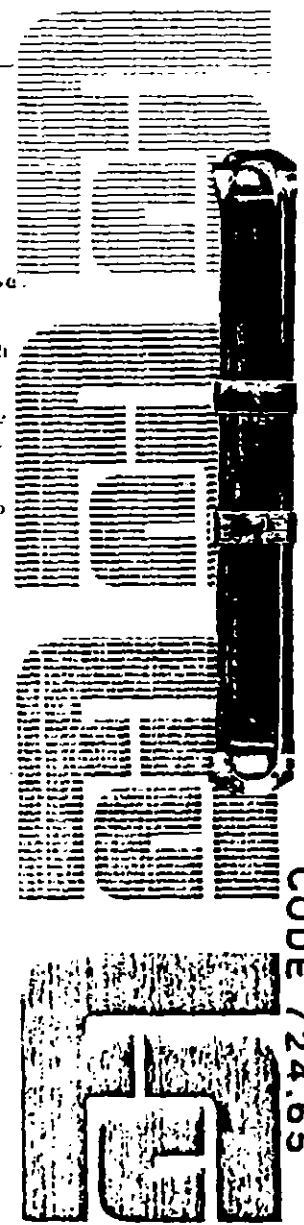
Step 2
Spray as directed in rate chart. Use coarse drenching sprays for lawn, soil and other surface applications. Use medium-fine mist sprays for trees and plants. Thorough coverage is important. Flush sprayer with clean water after each use.

fl. oz. = 6 teaspoons or 2 tablespoons
1 gal. in 3 gallons of water = 4 teaspoons in 1 gallon of water.

USE AREA	PESTS	APPLICATION RATE	NOTES
LAWNS: (Bluegrass, Merion, Fescue, St. Augustine, Dichondra, Bent, Bermuda)	Chinch bugs, Sod Webworms, Bermuda Mites, Ants, Larvae, Lawn Billbugs, Armyworms, Bermudagrass Thrips, Chiggers, Crickets, Cutworms, Fleas, Fleettles, Leafhoppers, Sowbugs, Springtails (Collembola), Brown Dog Ticks	4 tbsps. (2 fl. oz.) in 3 gals. of water covers 125 sq. ft. 16 fl. oz. in 24 gals. of water covers 1000 sq. ft.	Apply when grass is down a few hours before mowing. For Billbugs: water lawn after treatment. Brown Dog Ticks, do not apply to animals. In particular, spray under shrubbery and the grass next to house.
	Millipedes	8 tbsps. (4 fl. oz.) in 3 gals. water covers 125 sq. ft. 32 fl. oz. per 24 gals. of water covers 1000 sq. ft.	In the north if chinch bugs are the only insect problem, use a lower application rate of 4 tbsps. in 3 gals. of water covers 250 sq. ft. or 1 fl. oz. in 3 gals. of water to cover 125 sq. ft.
	Bermudagrass Scales	4 tbsps. (2 fl. oz.) in 3 gals. of water covers 100 sq. ft.	Apply when Scale Crawlers first emerge.
	Ants, Dryer Wasps	4 tbsps. (2 fl. oz.) in 3 gals. of water covers 125 sq. ft.	Spot spray ant hills and wasp ground nest openings. Make the applications at dusk when wasps have returned to the nest and are not active.
	Billbugs, White Grubs of Japanese Beetle, European Chater, Southern Chater	4 tbsps. (2 fl. oz.) in 3 gals. of water covers 125 sq. ft. Water grass thoroughly after application.	Billbug Control: Apply when activity is first observed or when chowd or brown grass is present, indicating damage from the insect grub control. Make application any time between late July and early October. (Consult local Cooperative Extension Service for exact dates).
	Hyperodes Weevil,	1 fl. oz. in 3 gals. of water covers 125 sq. ft.	Water grass thoroughly after application. Treat problem areas in mid-April and again in mid-May.

ACCEPTED
MAR 11 1983
For the Federal Insecticide, Fungicide, and Rodenticide Act, registered under EPA Reg. No. 4816-597

BEST AVAILABLE COPY



CODE 724.65

FAIRFIELD AMERICAN CORPORATION
7912 SALT ROAD