

CODE 721.30

BEST AVAILABLE COPY

Pyrethone[®] GENERAL PURPOSE SPRAY

EPA Reg. No. 1816-520

EPA Reg. No. 279-NV-1

Pyrethone General Purpose Spray is an Effective, Fast-Acting Insecticide that kills the Accessible or Exposed Stages of: ANTS, BUTHUS, CHEESE MITES, CLOVER MITES, CUCKOOBILLS, CRICKETS, FLYING MOTHS, FRUIT FLIES, GRAYS, HARKENS, HAZEL FLIES, MARGARITES, SCORPIONS, SHIMMERSH, SPIDERS and WASPS

and these General PURPOSE Pests:

Angoumois Grain Moths	Grain Mites	Rice Weevils
Carpet Beetles	Granary Weevils	Rust-red Flour Beetles
Cassidid Fleas	Indian Meal Moths	Saw-toothed Grain Beetles
Cigarette Beetles	Meal Worms	Spider Beetles
Confused Flour Beetles	Mediterranean Flour Moths	Tobacco Moths
Drugstore Beetles		

Pyrethone General Purpose Spray is highly useful for insect control in Residences, Institutions, Public Buildings, Hospitals, Hotels, Restaurants, Stores, Theaters, Food Processing Plants, Bakeries, Grain Mills, Juries, Breweries, Bottling Plants, Water uses, Trucks, and other situations where an insecticide with a high degree of effectiveness is required.

The insecticidal components Piperonyl Butoxide and Pyrethrins are classified as low additives, and when this product is used as directed, allowable tolerance levels will not be exceeded.

ACTIVE INGREDIENTS

Pyrethrins	0.15%
*Piperonyl Butoxide, Technical	1.50%
**INERT INGREDIENTS	98.35%
Equivalent to 1.2% (butylcarbitol) (6-propyl) piperonyl ether and 100.00%	

**Contains Petroleum Distillate
Pyrethone - Registered Trademark of Fairfield American Corporation

**KEEP OUT OF REACH OF CHILDREN
CAUTION**
See rear panel for additional precautions.

DIRECTIONS FOR USE

It is a violation of Federal law to use this product in a manner inconsistent with its labeling.

For maximum insect control, a combination localized surface application and space spray is recommended.

SPACE SPRAY: For rapid control of house flies, fruit flies, mosquitoes, flying ants, and gnats. Close doors and windows and shut off ventilating systems. Use a good sprayer adjusted to deliver a fine mist, directing spray toward the upper portions of the enclosure and filling the room with mist. Use 1/2 to 1 oz. of spray for each 1000 cu.ft. of space. Keep area closed for at least 10 minutes after spraying. Vacate area after treatment and ventilate before reoccupying.

VAPOR SPRAY: Pyrethone General Purpose Spray is a potent spray that permits its use as a fog or vapor treatment in special electric, steam or compressed air equipment. Use in accordance with manufacturers' instructions for the individual type of applicator selected. Dosages vary with different generators, but many such applicators are designed to give most effective results when the material is used at 1 pint to each 8,000 - 15,000 cu. ft. of space. In all cases, dosages should be sufficient to thoroughly fill the enclosure with fog or vapor. Insects controlled will be the same as given for "Space Spray" above.

SURFACE SPRAY: To control cockroaches, silverfish, crickets, spiders, clover mites, scorpions, cheese mites, cheese skippers, spider beetles, use Pyrethone General Purpose Spray in a good machine adjusted to deliver a coarse droplet spray using approximately 1 gal. of material to each 750 sq. ft. of surface. Spray infested areas thoroughly and direct the liquid toward baseboards, moldings, cabinets, shelves, stiles, door and window frames, pipes, toward drains and dark corners and into cracks, crevices, recesses and similar hiding places, contacting insects wherever possible.

Against Ant Infestations, treat shelves, cabinets and storage areas; spray ant runs, trails, baseboards, thresholds and other places of entry and treat nests liberally.

To Control Bedbugs effectively, apply liberally to top, ends, sides and bottom of mattresses, spraying thoroughly all tufts, seams and folds. Spray springs and frames, directing the liquid into all cracks and lock joints. Treat walls, baseboards, moldings, floors, closets, bedroom furniture and picture frames with particular attention to protected bedbug hiding and breeding places.

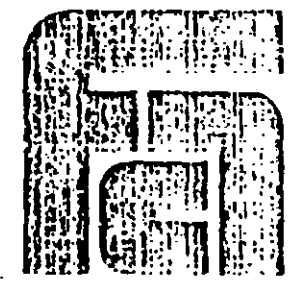
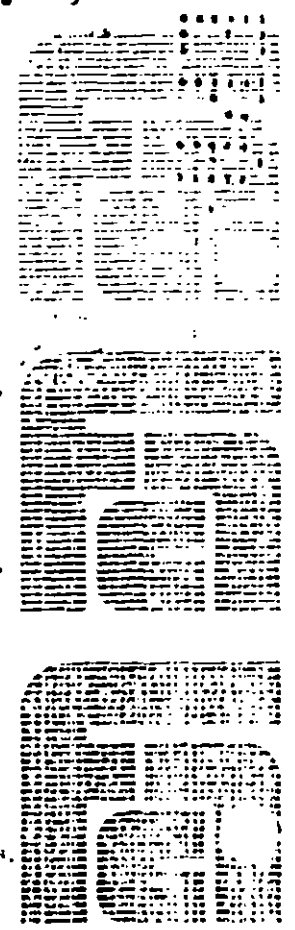
To Control Carpet Beetles effectively, apply to floor areas and baseboards. Spray directly into cracks, crevices and under carpets where insects may be found. Treat both the underside and top side of infested carpets. Spray inside of trunks, closets and infested areas of shelving.

Stored Grain or Flour Insects: Pyrethone General Purpose Spray is also useful in mills, elevators, granaries, warehouses, food storages and other situations where an effective, fast-acting insecticide is required for control of the exposed stages of: granary weevils, rice weevils, cigarette beetles, drugstore beetles, carpet beetles, saw-toothed grain beetles, rust-red flour beetles, confused flour beetles, Angoumois grain moths, Indian meal moths, tobacco moths, meal worms and grain mites. As a space or vapor spray, it provides rapid kill of flying and crawling stages. In cracks and crevices of floors, it is effective in the control of grain insects.

For Treatment of Floors and Bins: Pyrethone General Purpose Spray not only gives initial kill of the accessible stages of most stored grain and food product pests listed in the previous paragraph, but gives some continued protection in cracks and crevices where insects hide. Apply with a good machine, adjusted to deliver a coarse droplet spray using approximately 1 gal. of material to each 750 sq. ft. of surface. Repeat applications as needed.

In mills, elevators and granaries, thoroughly spray floors, walls and other surfaces of bins, storage and handling areas with particular attention to cracks, crevices and similar protected locations. Waste grain, dust, dirt and debris should be removed and destroyed and storage areas cleaned before spraying. Treat unloading, handling and processing areas and apply the insecticide to conveying, processing and handling equipment, the inside of reel sifter, pulper conveyors, sifters, roll bearings and hoppers, pick-up conveyors, etc. Spray thoroughly around the bases of heavy machinery and equipment.

SEE REVERSE SIDE



FAIRFIELD AMERICAN CORPORATION

239 WILSON AVE. NEWARK, N.J. 07102