

AQUEOUS

Pyrenone®

GARDEN SPRAY

CODE 724.00

EPA Reg. No. 4816-482 EPA Est. No. 279-NY-1

KILLS GYPSY MOTH CATERPILLARS AND JAPANESE BEETLES

AN EFFECTIVE INSECTICIDE FOR USE ON VEGETABLE AND ORNAMENTAL PESTS

A CONCENTRATED PYRENONE® MICRO-EMULSION, CLEAR, STABLE

APPLY WITH CONVENTIONAL MECHANICAL COMPRESSED AIR EQUIPMENT OR NON-AEROSOL PUMP

ACTIVE INGREDIENTS:

Pyrethrins.....	0.02%
*Piperonyl Butoxide, Technical....	0.20%
INERT INGREDIENTS:.....	99.78%
	100.00%

*Equivalent to min. 0.16% (butylcarbityl) (6-propylpiperonyl) ether and 0.04% related compounds.

**KEEP OUT OF REACH OF CHILDREN
CAUTION**

See side panel for additional precautions.

**DO NOT TRANSPORT OR STORE
UNDER 32°F**

If freezing occurs, thaw and agitate vigorously.

PYRENONE - Registered trademark of
Fairfield American Corporation

DIRECTIONS FOR USE

It is a violation of Federal law to use this product in a manner inconsistent with its labeling.

TO OPERATE: SHAKE BEFORE USING. Hold sprayer 18 inches from foliage and spray with circular motion. Direct spray so that upper and lower leaf surfaces are contacted. Use caution on new growth and tender foliage. Repeat treatment as necessary. When using outdoors, spray when air is still.

TO OPERATE: SHAKE BEFORE USING. Turn nozzle to "spray" or "stream" position before using. Hold pump sprayer 18 to 24 inches from foliage or surfaces being treated. Direct the spray so that upper and lower surfaces are contacted. Use caution on new growth and tender foliage.

TO OPERATE: SHAKE BEFORE USING. Remove shipping cap and save. Insert sprayer hose into bottle and tighten securely. Prime sprayer by holding at cap level of bottle and pumping trigger. Turn nozzle to "spray" or "stream" position before using. Hold pump sprayer 18 to 24 inches from foliage or surfaces being treated. Direct spray so that upper and lower surfaces are contacted. Use caution on new growth and tender foliage. Remove sprayer and replace shipping cap between uses. Spray water through sprayer after each use. Sprayer should be rinsed thoroughly and pumped empty for storage.

This insecticide may be used indoors, outdoors or in greenhouses throughout the growing season, or as a pre-harvest treatment when other insecticides are prohibited due to residue restrictions and use limitations.

To control insects named, apply this spray to provide thorough coverage of upper and lower leaf surfaces. Repeat treatment weekly or as needed to control infestations. May be applied on day of harvest.

Use on the following crops: Asparagus, Beans, Broccoli, Cauliflower, Cabbage, Brussels Sprouts, Celery, Cranberries, Eggplant, Lettuce, Mustard Greens, Kale, Collards, Turnips, Peppers, Potatoes, Radishes, Spinach, and Tomatoes. To Control: asparagus beetles, aphids, leafhoppers, whiteflies, Mexican bean beetles, 12-Spotted cucumber beetles, cabbage loopers, cross-striped cabbageworms, diamondback moth larvae, flea beetles, harlequin bugs, imported cabbageworms, stink bugs, green peach aphids, leafhoppers, fireworms, blister beetles, Colorado potato beetles, and webworms.

Use on the following ornamentals: African Violets, Azaleas, Begonias, Camellias, Dahlias, Dogwood, Roses, Wandering Jew, Asters, Carnations, Chrysanthemums, Geraniums, Gladiolus and Marigolds. To Control: aphids, flea beetles, leafhoppers and whiteflies.

To kill gypsy moth caterpillars and adults, adult Japanese beetles and Eastern and forest tent caterpillars on contact:

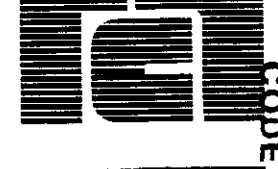
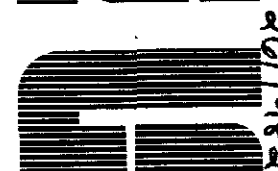
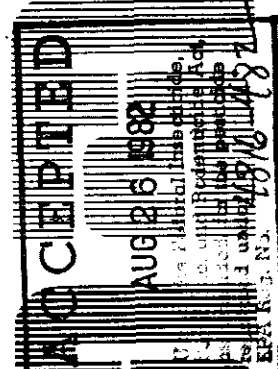
On Trees and Shrubs: Treat trees and shrubs as soon as insects emerge (usually late spring). Treat leaves, branches and tree trunks evenly, making sure to penetrate dense foliage. Repeat application every 7 days as necessary for control.

On Roses and in Flower Gardens: Treat plants and flowers as soon as insects appear. Spray plants and flowers making sure to penetrate dense foliage. Repeat application every 7 days or as necessary for control.

INDOORS AS A SPACE SPRAY

To control house flies, fruit flies, mosquitoes, gnats and small flying moths: apply using a good space sprayer adjusted to deliver a fine mist. Cover or remove exposed food and food handling surfaces. Close windows and doors and shut off ventilating systems. Direct spray toward upper portions of the enclosure filling the room with mist. Use 4 to 5 ounces per 1000 cubic feet of space. Keep area closed for at least 30 minutes. Vacate treated areas and ventilate before reoccupying. Repeat treatment as necessary.

SEE REVERSE SIDE



**FAIRFIELD
AMERICAN**
CORPORATION
3932 Salt Road
Medina, N.Y. 14101

OUTDOORS, ADULT MOSQUITO CONTROL

Apply as a fine mist to thoroughly treat the entire area. For best results, treat when the wind velocity does not exceed 5 miles per hour. Treat shrubbery and vegetation where mosquitoes may rest particularly around the perimeter of mosquito breeding sites such as swamps, marshes, stagnant pools and ponds. Apply at a rate of 5 to 6 quarts per acre (4 ounces per 1000 square feet).

To control mosquito larvae, apply at the rate of 7.75 gallons per acre or .18 gallons per 1000 square feet. Apply as a coarse wetting spray to the border of, or on shallow waters of wetlands, swamps and marshes where mosquito larvae are known to breed.

DISPOSAL

Do not reuse empty container. Wrap container and put in trash collection.

PRECAUTIONARY STATEMENTS HAZARDS TO HUMANS & DOMESTIC ANIMALS

CAUTION

CAUTION: Harmful if swallowed or absorbed through skin. Avoid breathing vapors. Avoid contact with eyes, skin or clothing. In case of contact, immediately flush eyes and skin with plenty of water. Get medical attention if irritation persists. Remove pets, birds and cover fish aquaria before spraying.

ENVIRONMENTAL HAZARDS

This product is toxic to fish. Do not apply directly to lakes, streams, ponds, tidal marshes and estuaries. Do not contaminate water by cleaning of equipment or disposal of wastes. Shrimp and crabs may be killed at application rates recommended on this label. Do not apply where these are important resources.

Buyer assumes all risks of use, storage or handling of this product not in strict accordance with directions given herewith.

BATCH

Printed in U.S.A.

NET CONTENTS. _____

5.13.05

0.00.00

2/2