

[4816-459]

CODE
818.75

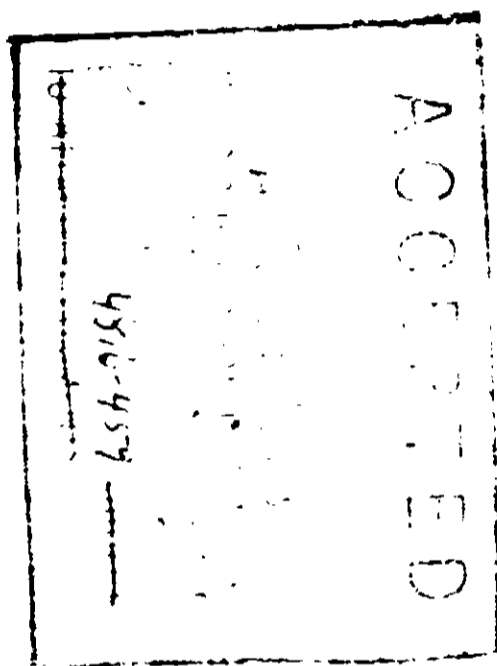


NET WEIGHT
_____ LBS.

PLANT SPRAY P.R. CONCENTRATE

INSECTICIDE

EPA Reg. No. 4816-459



ACTIVE INGREDIENTS:

Pyrethrins	2.800%
Rotenone	0.535%
Other Cube' Extractives	0.995%
Petroleum Distillate	20.300%
Pine Oil	45.000%

INERT INGREDIENTS: 30.370%

CAUTION
KEEP OUT OF REACH OF CHILDREN.

Harmful if swallowed or absorbed through skin. Do not get in eyes or skin or on clothing. In case of contact, wash immediately with soap and water. Wash all contaminated clothing with soap and hot water before reuse. If swallowed, call a physician immediately.

This product is toxic to fish. Do not contaminate ponds, lakes or streams by cleaning of equipment or disposal of wastes.

Do not reuse empty container. Return to drum reconditioner or destroy by crushing or perforating and burying in a safe place

FOR MANUFACTURING USE ONLY

TERMS OF SALE OR USE: This product is sold as a concentrate for use in the manufacture of plant sprays. It is not to be used as a finished product. The user must follow the instructions on the label of the finished product. The manufacturer of the finished product is responsible for the proper use of this product. The user must follow the instructions on the label of the finished product. The manufacturer of the finished product is responsible for the proper use of this product. The user must follow the instructions on the label of the finished product. The manufacturer of the finished product is responsible for the proper use of this product.



NIAGARA CHEMICAL DIVISION
FMC CORPORATION
MIDDLEPORT, N. Y. 14105