

4816-442

5/11/1977

Page 1 of 3

Code 720.75

MULTI-PURPOSE PYRENONE® INSECTICIDE CONCENTRATE

EPA REG. NO. 4816-442

A Highly Versatile PYRENONE® Concentrate
May be diluted with either water or oil

For use in Bakeries, Bottling Plants, Canneries, Flour Mills, Food Processing Plants, Grain Elevators, Hospitals, Hotels, Motels, Restaurants, and Outdoors for Mosquito Control and on Growing crops. Provides Rapid Kill of Insects Named Without Objectionable Residues.

ACTIVE INGREDIENTS:

Pyrethrins	1.0%
*Piperonyl Butoxide, Technical	10.0%
Petroleum Distillate	79.0%

INERT INGREDIENTS:	10.0%
	100.0%

*Equivalent to 8.0% (butylcarbityl) (6-propylpiperonyl) ether and to 2.0% related compounds.

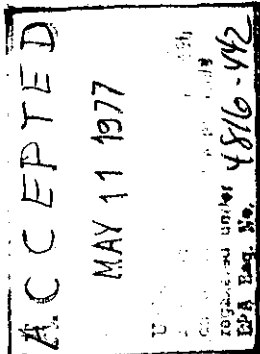
PYRENONE - Fairfield American trademark

CAUTION

Keep Out Of Reach Of Children

Harmful if swallowed. Do not reuse empty container. Destroy by perforating or crushing and burying in a safe place.

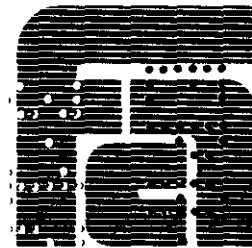
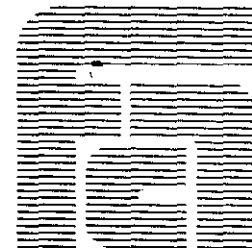
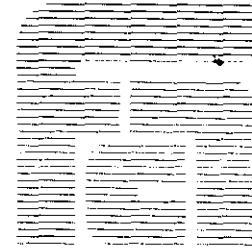
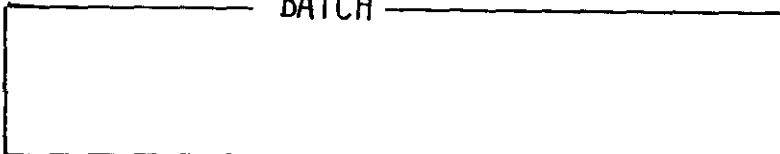
See additional precautions on rear panel.



NET CONTENTS 1 GALLON
 NET CONTENTS 3.79 LITERS
 NET CONTENTS 6.9 POUNDS
 NET CONTENTS 3.13 KILOS

EPA Est., 279-NY-1

BATCH _____



**FAIRFIELD
 AMERICAN**
 CORPORATION
 100 NIAGARA ST.
 MIDDLEPORT, N.Y. 14105

PANEL 1

USAGE PRECAUTIONS

The use of this product in food processing plants should be confined to time periods when the plant is not in operation. Foods should be removed or covered during treatment. All food processing surfaces should be covered during treatment or thoroughly cleaned before using.

If used in edible product areas of federally inspected meat, poultry, shell egg grading, and egg product establishments, it must be dispersed as an aerosol spray (no droplets over 50 microns in diameter and 80% less than 30% microns.)

When diluting in water, prepare only the amount required for immediate use. Holding a water dilution more than 24 hours is not recommended.

Do not apply outdoors when weather conditions favor drift from area treated.

This product is toxic to fish, shrimp, crab and other aquatic organisms. Keep out of lakes, streams and ponds (except when used as a mosquito larvicide — then use only around the borders of these areas). Shrimp and crab may be killed at application rates recommended on this label. Do not apply where runoff is likely to occur. Do not apply when weather conditions favor drift from areas treated. Do not contaminate water by cleaning of equipment or disposal of wastes. Apply this product only as specified on this label.

DIRECTIONS FOR USE

This concentrate is designed to be diluted with water or oil before use. The resulting spray solution should be applied using good mechanical or compressed air fogging equipment.

The insecticidal components of this concentrate, pyrethrins and piperonyl butoxide, are classified as food additives, and when used as directed allowable tolerance levels will not be exceeded.

INDOOR APPLICATION: Remove pets, birds, and cover fish aquariums before spraying.

To control exposed stages of flies, including fruit flies, mosquitoes, gnats, and flying moths, dilute 1 part concentrate to 19 parts water or oil (6 1/2 ounces per gallon or 5 gallons per 100). Close doors and windows and shut off ventilating systems. Apply as a fog or fine mist directing the spray toward the upper portions of the room and toward windows and other light sources which attract these insects. Thoroughly fill the area with mist using 1 1/2 ounces per 1000 cubic feet. Keep area closed for 10 minutes or more. Vacate after treatment and ventilate before reoccupying. Repeat treatment as needed.

For initial clean out of infestations of cockroaches, ants, spiders, silverfish, crickets, boxelder bugs, scorpions, and clover mites: dilute 1 part concentrate in 4 parts water or oil. Apply as a coarse droplet surface spray using approximately 1 gallon to 750 square feet. Spray thoroughly all surfaces where these insects are usually found including walls, baseboard moldings, doors, cabinets, shelves, sinks and pipes, with special attention to cracks and crevices, niches, dark corners, drains and similar hiding places. Treat ant trails, nests and runs. When possible, spray insects directly.

Repeat treatment using a dilution of 1 plus 9 at the same rate of application after an interval of one month or when reinfestation occurs.

PANEL 2

IN MILLS, ELEVATORS AND GRANARIES: For rapid initial kill of exposed or accessible stages of granary weevil, rice weevil, confused flour beetle, rust red flour beetle, cadelle, saw-toothed grain beetle, spider beetle, cheese mites and grain mites: dilute at a rate of 1 part concentrate to 9 parts water or oil. Clean out any waste grain, dust, dirt or debris and destroy before spraying. Apply as a coarse droplet spray using approximately 1 gallon to 750 square feet of surface.

Infested stored products should be fumigated or treated by other effective methods using an approved product intended for this use.

In mills, elevators, and granaries, thoroughly spray floors, walls and other surfaces of bins, storage and handling areas with particular attention to cracks, crevices, and similar protected locations. Treat unloading, handling and processing areas, and apply the insecticide to conveying, processing and handling equipment, such as the inside of reel conveyors, purifier conveyors, sifters, roll housings and hoppers, pick up conveyors, etc. Spray thoroughly around the base of heavy machinery and equipment.

Thoroughly treat walls, floors, shelves and other exposed surfaces, and lightly spray each layer of cartons or containers as stacked.

Sack surfaces of bagged grain can be sprayed lightly until slightly moist.

For protection in transit, treat truck beds, box cars, and ships' holds before loading. Using a dilution of 1 part concentrate in 9 parts water, apply at a rate of 1 gallon to 750 square feet of surface with particular attention to cracks, crevices, and similar hiding places.

To control exposed accessible stages of Indian meal moth and Angoumois grain moth in stored grain: dilute 1 part of concentrate in 4 parts of water and apply to the surface of the binned grain at a rate of 2 gallons per 1000 square feet (1.6 pints per 100 square feet). Apply at monthly intervals beginning with the first appearance of moths and continuing until early fall. In case of severe infestation, break up webbing with rake before spraying and make a second application in two weeks.

ON LIVESTOCK:

To control horn flies, house flies, mosquitoes, and gnats, dilute at the rate of one part concentrate to 39 parts water and apply to wet the hair thoroughly, with particular attention to the topline, underline, flanks, withers, and other infested areas. Repeat treatment at intervals of 5 to 12 days for small insect populations or as needed when flies are emerging in large numbers.

To control stable flies, horse flies, and deer flies, dilute one part concentrate to nine parts water and apply a quart per adult animal to wet the hair thoroughly with particular attention to the legs, flanks, barrel, topline, and other body areas commonly attacked by these flies. Repeat treatment each week or as needed.

To control face flies, dilute one part concentrate to nine parts water. Use a spray which produces large wetting droplets. Apply to the face of the animal in the morning before releasing to pasture. Apply sufficiently to wet the face but not more than 1 1/2 ounces per animal. Repeat daily as needed.

PANEL 3

For effective control of motile stages of (biting) **yellow lice** and (sucking) **blue lice** on cattle, horses, sheep, goats, and hogs, dilute this concentrate at a rate of 1 part in 100 parts water. Spray to thoroughly wet the hair of the animal including the head and brush of the tail. Repeat treatment in 10 days to kill newly hatched lice.

To control **poultry lice**, using a dilution of one to 100 in water, dip birds by submerging in a barrel, tank or tub of the solution, holding the wings away from the body to insure thorough wetting of all infested areas. In order to avoid chilling the fowls, dip them on a warm day or in a warm building.

For control of **bedbugs** and **mites in poultry houses**, dilute one part of concentrate with nine parts of water and spray crevices of roost poles, cracks in walls, and cracks in nests where the bedbugs and mites hide.

To control **sheep "tick" or ked**, dilute at the rate of one part of concentrate to 100 parts of water and thoroughly wet all portions of the body by dipping or by spraying with sufficient pressure and with a nozzle adjustment to give penetration of the wool. Treat at a rate sufficient to wet the animal.

To kill **fleas on livestock and pets**, and to obtain protection against reinfestation, dilute at one to nine in water and wet the animal by dipping or spraying. For best results against fleas and ticks on dogs, the kennels or animal quarters and bedding should also be treated.

To control **spinose ear tick**, dilute at the rate of one part concentrate to 24 parts water and apply by individual treatment, syringing or pouring 1 to 2 ounces into each ear of large animals or a few drops into the ears of dogs.

IN BARNs, MILKING PARLORS, MILK ROOMS, and DAIRIES: To control **flies, mosquitoes, and gnats**, dilute at the rate of one part concentrate to nine parts of water or oil and apply as a fog or fine mist, directing the spray toward the ceiling and upper corners until the area is filled with mist using about 2 ounces per 1000 cubic feet of space. For best results, close doors and windows before spraying and keep them closed for ten to fifteen minutes. Vacate the treated area and ventilate before reoccupying. Repeat application as necessary.

MOSQUITO CONTROL OUTDOORS: To control **adult mosquitoes**, using ground application, dilute 1 part concentrate in 7 parts of water or oil. Apply as a fine mist or fog. Treat shrubbery and vegetation where mosquitoes may rest. Shrubby and vegetation around stagnant pools, marshy areas, ponds and shore lines may be treated. Application of this product to any body of water is prohibited, when used for adult mosquito control. Repeat as necessary usually once or twice a week.

With mobile or truck mounted equipment the above application rate will result if a 400 foot swath is treated, traveling at 15 mph, dispensing spray at a rate of 40 gallons per hour.

Application using fixed wing aircraft: Use 6 to 12 ounces of concentrate in 4 gallons of water per acre.

To control **mosquito larvae**, dilute 2 1/2 pints of concentrate in 5 gallons of oil and apply at a rate of 5 gallons per acre. Apply as a coarse wetting spray uniformly over wet lands, swamps, marshes, or shallow waters. Do not exceed this dosage or fish kill may result.

PANEL 4

ON GROWING CROPS: May be used on edible crops (outdoors or in greenhouses) up to and including day of harvest. Especially desirable as a clean up or pre-harvest spray where other materials may not be used due to residue restrictions. When applied according to accepted use cautions and directions, this concentrate may be used in combination with other insecticides where resistant insects are a problem or as an "exciter" where insects are flushed out of hiding and into contact with spray residues.

On the following crops to control the insects named, use 12 to 36 ounces per acre in sufficient water to allow thorough coverage (usually 100 gallons). Coverage of upper and lower leaf surfaces is essential for good control.

- ASPARAGUS:** Asparagus Beetle
- BEANS:** Aphids, Leafhoppers, White Fly, Mexican Bean Beetle, 12-spotted Cucumber Beetle
- BROCCOLI, CABBAGE, BRUSSELS SPROUTS, CAULIFLOWER:** Aphids, Cabbage Looper, Cross-striped Cabbageworm, Diamondback Moth Larvae, Flea Beetle, Harlequin Bug, Imported Cabbageworm, Stink Bug
- CELERY:** Green Peach Aphid, Cabbage Looper, Leaf Tier
- CRANBERRIES:** Fireworms, Leafhopper
- EGGPLANTS:** Blister Beetle, Colorado Potato Beetle, Flea Beetle, Green Peach Aphid
- LETTUCE:** Cabbage Looper, Green Peach Aphid, Diamondback Moth Larvae, Imported Cabbageworm
- MUSTARD GREENS, KALE, COLLARDS, TURNIPS:** Imported Cabbageworm, Diamondback Caterpillar, Aphids, Cabbage Looper
- PEPPERS:** Green Peach Aphid
- POTATOES:** Aphids, Colorado Potato Beetle, Flea Beetle, Leafhopper
- RADISH:** Aphids, Flea Beetle
- SPINACH:** Aphids, Cabbage Looper, Webworm
- TOMATOES:** Green Peach Aphid, Colorado Potato Beetle, Stink Bug, Flea Beetle
- ORNAMENTALS:** (African Violets, Asters, Azaleas, Begonias, Camellias, Carnations, Chrysanthemums, Dahlias, Dogwood, Geraniums, Gladioli, Marigolds, Roses, Rubber Plants, Wandering Jew, etc.) Aphids, Flea Beetles, Leafhoppers

DROSOPHILA OR FRUIT FLY CONTROL: Dilute at the rate of 6 parts concentrate with 1200 parts water (6 pints per 150 gallons or 6 tablespoonsful with 4 gallons water). Thoroughly mix the emulsion in the spray tank. Make treatments as follows:

1. To protect tomatoes and fruits in baskets on trucks or in plants, use a product registered for this use such as Pyrenone Crop Spray.
2. Spray the raw stock stacked in the yard.
3. Dip baskets in the diluted spray after dumping the fruit to kill adhering larvae and pupae.
4. After washing and cleaning up the inside of the processing plant and just prior to bringing fruit into it, the entire space inside the cannery should be sprayed at a dilution of 6 parts concentrate to 59 parts water (6 pints) with 7 gallons 3 pints water or 12 tablespoonfuls with 3 1/4 pints water). At the rate of 1 gallon to 750 square feet (1 quart to 750 sq. ft.) direct spray on walls, ceilings, and floors, paying special attention to forcing spray into all cracks and crevices.