

PU 17 4816-382 17 193

655 | 269049
37 | 25

JUL 10 1990

Mr. Jan Brill
Fairfield American Corporation
809 Harrison Street
Frenchtown, NJ 08825

Dear Mr. Brill:

Subject: Synthrin House and Garden Insecticide Spray 0.25%
EPA Registration No. 4816-382

The labeling referred to above, submitted in connection with
registration under the Federal Insecticide, Fungicide, and Rodenticide
Act, as amended, is acceptable. A stamped copy is enclosed for your
records.

Sincerely yours,



Phil Hutton
Product Manager (17)
Insecticide-Rodenticide Branch
Registration Division (W7305C)

Enclosure

51263:I:A-4:Hollis:H-14:KENCO:6/26/89:7/26/90:dg:vo:sw:ek:dg

CONCURRENCES

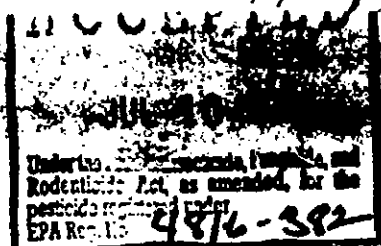
SYMBOL								
SURNAME								
DATE								

CODE 82625

SYNTHRIN® HOUSE AND GARDEN INSECTICIDE SPRAY 0.25%

EPA Reg. No. 4816-382

EPA Est. No. 279-NY-1



NEW! HIGHLY ACTIVE SYNTHETIC PYRETHROID

Effective in Controlling a Wide Variety of Insect Pests in the Household and on Ornamental Garden Plants

ACTIVE INGREDIENTS:

*Resmethrin	0.250%
Related Compounds	0.034%
INERT INGREDIENTS	99.716%
	100.000%

*Dis/trans isomers ratio: max. 30% (+) cis and min. 70% (+) trans.

**Contains Aromatic Petroleum Hydrocarbons

SYNTHRIN - Registered Trademark of Fairfield American Corporation.

DOES NOT CONTAIN CHLOROFLUOROCARBONS

KEEP OUT OF REACH OF CHILDREN

CAUTION

See rear panel for additional precautions

NET CONTENTS _____

DIRECTIONS FOR USE

It is a violation of Federal law to use this product in a manner inconsistent with its labeling.

STORAGE AND DISPOSAL

Store in a cool, dry area. Do not transport or store below 32°F.

Wrap container in several layers of newspaper and dispose of in trash. Do not incinerate or puncture.

STATEMENT OF PRACTICAL TREATMENT

IF INHALED: Remove affected person to fresh air. Apply artificial respiration if indicated.

IF IN EYES OR ON SKIN: Flush affected area with plenty of water. Contact a physician if irritation persists.

ENVIRONMENTAL HAZARDS

This pesticide is extremely toxic to fish. Do not apply directly to water or wetlands (swamps, bogs, marshes, potholes). Runoff and drift from treated areas may be hazardous to aquatic organisms in adjacent sites. Do not contaminate water when disposing of equipment washwaters.

BEST AVAILABLE COPY

PRECAUTIONARY STATEMENTS
HAZARDS TO HUMANS AND DOMESTIC ANIMALS
CAUTION

Avoid contamination of feed and foodstuffs.
Cover or remove fishbowls.

PHYSICAL OR CHEMICAL HAZARDS

WARNING: Contents under pressure. Do not puncture. Do not use or store near heat or open flame. Exposure to temperatures above 130° may cause bursting. Never throw container into fire or incinerator.

Buyer assumes all risks of use, storage or handling of this material not in strict accordance with directions given herewith.

11
12
13
14
15
16
17
18
19
20
21
22
23
24
25
26
27
28
29
30
31
32
33
34
35
36
37
38
39
40
41
42
43
44
45
46
47
48
49
50
51
52
53
54
55
56
57
58
59
60
61
62
63
64
65
66
67
68
69
70
71
72
73
74
75
76
77
78
79
80
81
82
83
84
85
86
87
88
89
90
91
92
93
94
95
96
97
98
99
100