

Jul. 13, 1972 4770-4

\$1.79

HARI-KARI

Roach Killer Fluid

ACTIVE INGREDIENTS	100%
Piperonyl Butoxide technical*	1.27%
Pyrethrins	0.13%
O,O-diethyl O-(2-isopropyl-4-methyl-5-pyrimidinyl) phosphorothioate**	0.50%
Petroleum Oil	98.10%

*Equivalent to 1.02% (butylcarbityl) (6-propylpiperonyl) other and 0.25% related compounds.

**Diazinon Household Insect Spray - Liquid

KILLS INSECTS

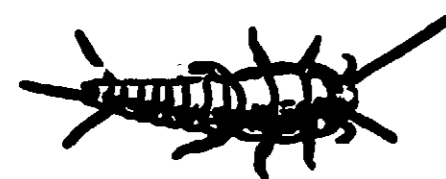
Roaches Ants Silverfish Brown Dog Ticks
Waterbugs Spiders Crickets Carpet Beetles

OUTDOORS

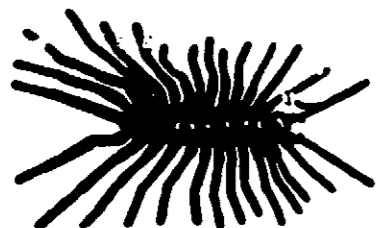
Flies Mosquitoes Ants
Wasps Flying Moths

NET CONTENTS 1 PINT

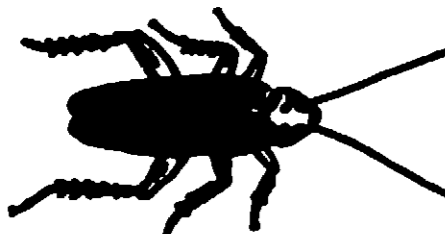
CAUTION: Keep out of reach of children.
See back panel for additional cautions.



SILVERFISH



CENTIPEDE, HOUSE



COCKROACH, AMERICAN
(Female)



COCKROACH, GERMAN
(Female)



COCKROACH, ORIENTAL
(Female)



HOUSEFLY

USE IN

Homes

Restaurants

Storage

Warehouses

Barns

Schools

Commercial

Buildings

MANUFACTURED BY NEODANE COMPANY, TORRANCE, CALIF.
1005 SANTA CLARA AVE. 90501

DIRECTIONS FOR USE

Spray infested surfaces only until wet.

ROACHES, ANTS, WATERBUGS, SILVERFISH, SPIDERS, CRICKETS: Spray heavily in all cracks, around baseboards and other places where these insects hide. Also spray until wet, surfaces behind and beneath cabinets, refrigerators, sinks, stoves, etc. Use on other localized areas infested with these pests. Repeat treatment as required.

CARPET BEETLES: Make localized application to areas of the floor and baseboards. Spray directly into cracks and under carpets where insects may be found. Treat crevices, cracks or closets and infested areas or shelvings. Repeat as necessary.

BROWN DOG TICKS: Thoroughly spray infested areas around baseboards, window and door frames, wall cracks, sleeping quarters of household pets and localized areas of floors and floor coverings. Applications should be repeated as infestations warrant and as re-infestations occur. Fresh bedding should be placed in animal quarters following treatment. Do not treat animal with this formulation.

FLIES, MOSQUITOES, ANTS, WASPS AND FLYING MOTHS OUTDOORS: For outdoor use only as an aid in reducing annoyance from these insects. Spray outside surfaces of screens, doors, window frames or wherever these insects may enter the room. Also treat surfaces around light fixtures on porches, in garages, and other places where these insects alight or congregate. For ants, thoroughly wet hills and runways. Repeat applications as infestations warrant and as re-infestations occur.

CAUTION: Harmful if swallowed. Keep out of reach of children. Avoid contamination of feed and foodstuffs. Avoid inhalation and skin contact. Wash thoroughly after using. Do not use on household pets or humans.

COMBUSTIBLE MIXTURE: Do not spray stove or use near open flame. Do not smoke while using.

CAUTION: Food Processing Areas: Do not use in edible products areas of food processing plants, restaurants, or other areas where food is commercially prepared or processed. Do not use in serving areas while food is exposed.

NOTICE: Our recommendations for use of this product are based upon tests believed to be reliable. The use of this product being beyond the control of the manufacturer, no guarantee, expressed or implied, is made as to the effects of such or the results to be obtained if not used in accordance with directions or established safe practice. The buyer must assume all responsibility, including injury or damage, resulting from its misuse as such, or in combination with other materials.

Contents 16 Fluid Ounces

E.P.A. Reg. No. 4770-4

accepted: 07/72