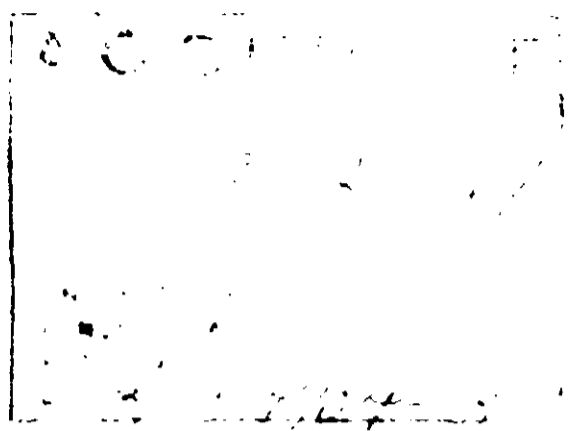


ONE GALLON



CAUTION "Keep out of reach of children"  
"Harmful if swallowed", and "Avoid contact with skin or eyes."

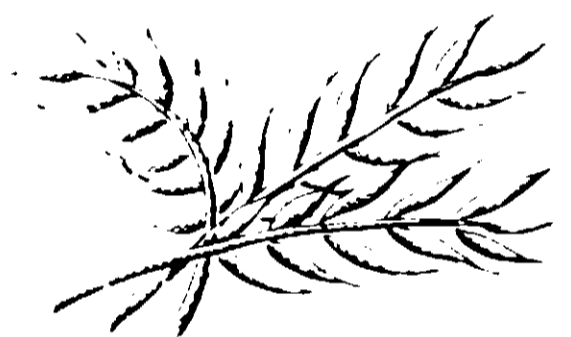
|                   |        |
|-------------------|--------|
| ACTIVE INGREDIENT |        |
| Bone Tar Oil      | 91.75% |
| INERT INGREDIENT  | 6.25%  |



*the  
country*

# A BETTER WAY TO CHASE DEER

PROTECTS:



FARM  
GRAIN CROPS



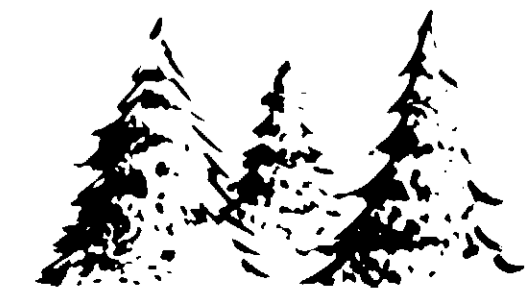
SHRUBS,  
FLOWERS  
VEGETABLE  
GARDENS



FARM  
FORAGE CROPS



FRUIT AND  
SHADE TREES



NURSERY  
STOCK

3-20-44

# MAGIC CIRCLE DEER REPELLENT IS EASY TO USE

Pour one to two parts of Magic Circle into 100 parts of water. Mix thoroughly. A more concentrated solution is recommended where the deer population is unusually heavy, or where the deer have already begun to feed on the crops.

Spray monthly, or two or three times monthly during heavy rain or snowfall. MAGIC CIRCLE DEER REPELLENT may be mixed with most insecticides, fungicides and weedkillers and applied during regular spraying operations.

### WHEN TO APPLY:

For positive protection, apply before feeding habits have been established.

### APPLICATION METHODS

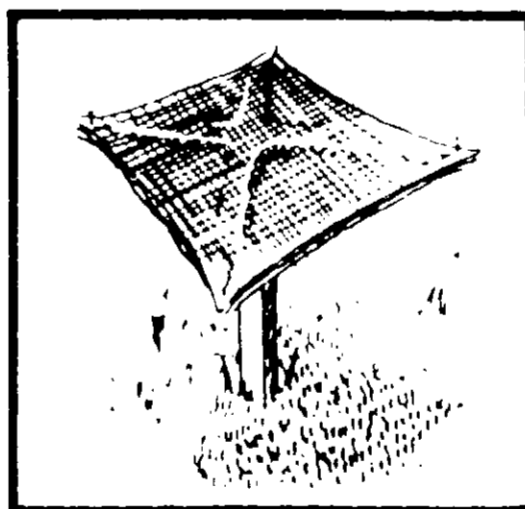
1. Perimeter Method. Apply to the perimeter of the ground surrounding the plants or fields to be protected, with a band at least 6 to 10 feet wide. Use 1 to 2 gallons to 100 gallons of water (100 gallons for the perimeter of 2 acres).

2. Stake or Wire Method. Saturate strips of burlap (12" x 36") in the concentrate, attach to stakes (2-5 feet high) placed 12-15 feet apart surrounding the perimeter of the area to be protected, where heaviest penetration of deer occurs. Or attach strips of burlap 12" x 12" and 4 layers thick to an X frame on top of a post. Pour the concentrate, about 4 ounces, in the center and allow it to spread out. If a wire fence is available stretch burlap horizontally in layers, saturate the center with 4 ounces of concentrate.

**CAUTION:** Magic Circle Deer Repellent has been tested on many crops. These tests show that MAGIC CIRCLE DEER REPELLENT will not harm plants (except in the tender seedling stage).

**CLEANING OF EQUIPMENT:** Clean sprayer used for application of Magic Circle Deer Repellent by repeated flushing with warm water and a detergent.

**NOTICE TO BUYER:** Seller makes no warranty of any kind, express or implied, concerning the use of this product. Buyer assumes all risk of use or handling, whether in accordance with directions or not.



Manufactured by

**STATE COLLEGE LABORATORIES**

30 N. 8th Street, Reading, Pa. 19601

U.S. DEPARTMENT OF AGRICULTURE