

INDICATIONS: For the removal of the stomach worm (*Hemonchus contortus*) and the nodular worm (*Ostertagia circumcincta*); for the reduction in the number of winter worms (*Trichostrongylus axei*, *Ostertagia* spp.) and other intestinal helminths (*Trichostrongylus axei*, *Cyathostomum* spp., *Haemonchus contortus*) from sheep and goats. For the control of *Hemonchus contortus*, *Ostertagia circumcincta*, *Trichostrongylus axei* and nodular worms (*Ostertagia circumcincta*) in cattle. For the reduction of *Trichostrongylus axei* and the removal of mature cecal worms (*Heterakis gallinarum*) from poultry.

Fen-Zene (phenothiazine) of continuous, low-level dosage use prevents the breeding of horn flies and horn flies in the manure of cattle and reduces the number of eggs or larvae of species infesting cattle, sheep and goats. The use of Fen-Zene does not affect existing flies.

DIRECTIONS

(1 rounded tablespoonful — approx. 10 gm.)
(1 level teaspoonful — approx. 2 gm.)

Therapeutic Dosage for elimination of worms*

CATTLE: Give 10 gm. (1 rounded tablespoonful) for every 100 lbs. of body weight. Do not exceed 60 gm. (6 rounded tablespoonfuls) for adult animals.

SHEEP AND GOATS: 9.5 gm. (1 1/4 rounded tablespoonfuls) for animals up to 60 lbs.; 25 gm. (2 1/2 rounded tablespoonfuls) for animals over 60 lbs.

Fen-Zene may be mixed with ground feed to which animals are accustomed. If ground feed is not part of the ration, see other panel for instructions for drenching.

Add 3 parts of dried molasses for each part of Fen-Zene used. It should be premixed with a small amount of oats or ground feed, then added to the amount that will be consumed in 2-4 hours. One pound of Fen-Zene is sufficient to treat 35 lambs or kids, or 18 adult sheep or goats.

HORSES: Give 3 grams (1 1/2 teaspoonfuls) for each 100 lbs. of body weight, not to exceed 30 grams (5 rounded teaspoonfuls) for large adult animals. Horses should be on a nutritious ration and be in good condition.

WARNING: Do not give Phenothiazine to sick, feverish, or undernourished animals. Give to horses with caution. Phenothiazine can be toxic.

CHICKENS: Cecal Worms (*Heterakis*) — Mix Fen-Zene with the feed as follows: For 50 birds, 1 ounce; for 226 birds, 4 ounces; for 908 birds, 1 pound. Mix in the amount of feed consumed in one day.

TURKEYS: Cecal Worms (*Heterakis*) — Mix Fen-Zene with the feed as follows: For 28 birds, 1 ounce; for 113 birds, 4 ounces; for 454 birds, 1 pound. Mix in the amount of feed consumed in one day.

Fen-Zene should be thoroughly mixed with ground feed to which animals are accustomed. Administer the medicated feed in the morning. Do not allow access to normal rations until all medicated feed is consumed. Fresh drinking water should be available at all times. Treatment may be repeated in two weeks if necessary.

Note: When starting on a continuous feeding program it is desirable, for maximum protection against horn flies and horn flies, to spray cattle with Anchor's K-N or Tenophene Spray. If Fen-Zene is started before the fly season begins, spraying for horn flies will usually not be necessary. Since flies migrate from farm to farm, it is essential that the larvicide program be carried out on an area basis to result in the reduction of the adult fly population.

Suggested Cattle Parasite Control Program

- A. A therapeutic dose is given for maximum elimination of worms. It should be given:
 1. Beef cattle, one month before breeding season
 2. Beef cows, 30 days after calving
 3. Calves, at 3 to 6 months of age
 4. All cattle, spring and fall
 5. All cattle, on entering the feedlot
- B. The therapeutic dose may be given as:
 1. A drench — Fen-Zene Drench
 2. A bolus — Fen-Zene Bolus
 3. In the feed — a pellet — Phen-O-Lets or a powder — Fen-Zene
- C. Between therapeutic treatments maintain control with continuous, low-level feeding of Fen-Zene. (See low-level chart)

CAUTION: Milk that has been taken from animals during treatment and for 96 hours (8 milkings) after the latest treatment must not be used for food.

In the event the consumption is low, adding a small amount of soybean meal, ground corn, or cottonseed meal to the medicated mix will increase intake. Animals should eat proportionately more of the adjusted mixture in such instances.

32-0967

For Drenching: Prepare the drench for sheep and cattle by adding 1 1/2 pints of water to each pound of Fen-Zene. Stir until thoroughly mixed. Or add 5 1/2 pints of water to 3 lbs., 9 oz. of Fen-Zene to make 1 fluid gallon of suspension. Each fluid ounce of the suspension will contain approximately 12 1/2 grams of Phenothiazine.

SHEEP AND GOATS: 2 fluid ounces

LAMBS AND KIDS: 1 fluid ounce

CATTLE: 1 fluid ounce for each 100 lbs. of body weight, not to exceed 6 fluid ounces; calves should receive not less than 2 fluid ounces.

NOTE: Administer drench with a dose syringe.

Therapeutic treatment of animals on full feed may produce a temporary reduction in feed consumption.

Low-level Continuous Feeding: This is a small prophylactic dose given daily. It suppresses egg production in the animal's worm population and reduces contamination in pastures and reinfestation of the animal; destroys the face fly and horn fly larvae when fed to cattle. It is best given in ground feed, but may be mixed with trace mineral salt. (See chart)

Mix 1 pound of Fen-Zene with the following amounts of feed or salt and give as directed:

Low-Level¹

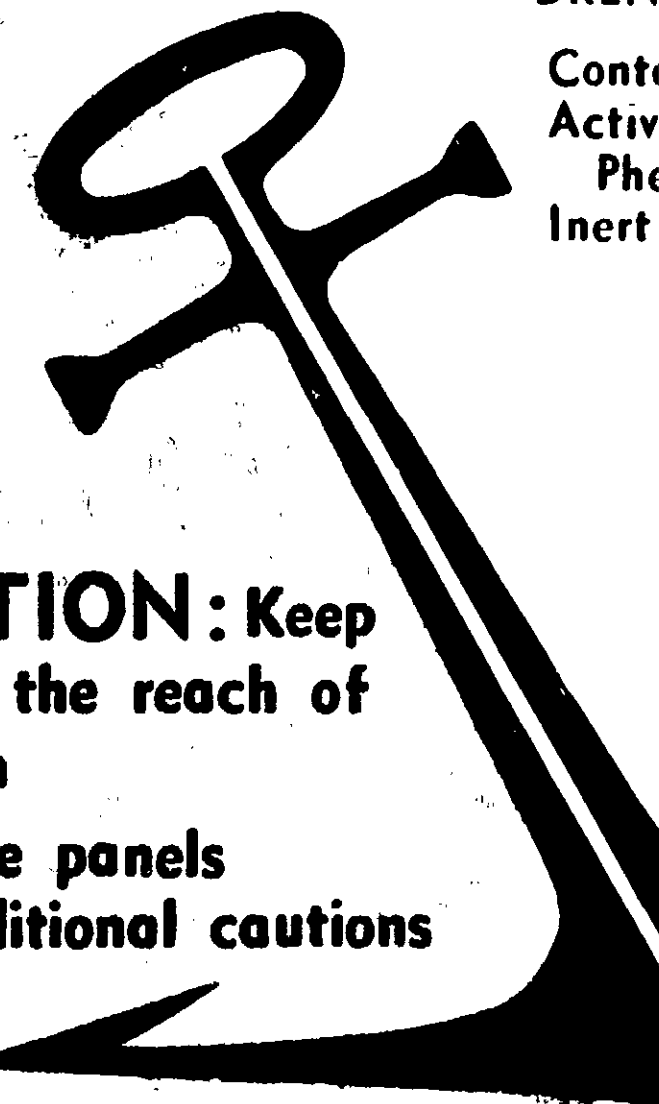
| ANIMAL | Amount of Feed | Medicated Feed Given Each Animal | No. Animals Treated With Feed | Trace Mineral Salt Mix | |
|---|----------------|----------------------------------|-------------------------------|---|-------------------|
| | | | | To Mix | Animal Should Eat |
| CATTLE & HORSES (Mature) | 1,135 lbs. | 5 lbs. per day ¹ | 227 | | 3 oz. |
| CALVES | | | | 1 lb. Fen-Zene to 17 lb. Trace Mineral Salt Mixture | |
| 200-lb. | 1,816 lbs. | 2 lbs. per day ¹ | 908 | | 1/3 oz. |
| 300-lb. | 1,210 lbs. | 2 lbs. per day ¹ | 605 | | 1/2 oz. |
| 400-lb. | 1,135 lbs. | 2 1/2 lbs. per day ¹ | 454 | | 2/3 oz. |
| 500-lb. | 905 lbs. | 2 1/2 lbs. per day ¹ | 362 | | 4/5 oz. |
| SHEEP (Mature) | 1,476 lbs. | 3 1/4 lbs. per day ¹ | 454 | | 2/3 oz. |
| LAMBS (Up to 60 Lb.) | 227 lbs. | 1/2 lb. per day ¹ | 454 | | 1/3 oz. |
| FOALS² (3 Mo. to 2 Yr.) | 1,135 lbs. | 2 1/2 lbs. per day ¹ | 454 | | 2/3 oz. |
| HORSES (2 to 3 Yrs.) | 800 lbs. | 2 1/2 lbs. per day ¹ | 320 | | 1 oz. |
| (3 Yrs. and over) | 567 lbs. | 2 1/2 lbs. per day ¹ | 227 | | 1 1/2 oz. |

¹If animal feed or mineral consumption does not agree with that recommended in the chart, alter mixture to assure the proper amount of Fen-Zene in the daily rations or mineral mix; i. e., for cattle consuming 10 lbs. of ground feed per day mix 1 lb. to 2,270 lbs. of feed.

²Horses — 2 gm. (1 level teaspoonful) once a day in the regular ration

³Foals — 1 gm. (1/2 level teaspoonful) once a day in the regular ration

For Animal Use Only



DREN
Cont
Activ
Ph
Inert

CAUTION: Keep out of the reach of children
See side panels for additional cautions

Dis

A Division of

for sheep and cattle by
 1 pound of Fen-Zene. Stir
 6 pints of water to 3 lbs.,
 1 gallon of suspension.
 100 lbs. will contain approxi-
 mately 1000 mg.

100 lbs. of body weight,
 should receive not less

dose syringe.
 on full feed may produce
 absorption.

is a small prophylactic
 production in the ani-
 mals; destroys the face
 to cattle. It is best given
 with trace mineral salt.

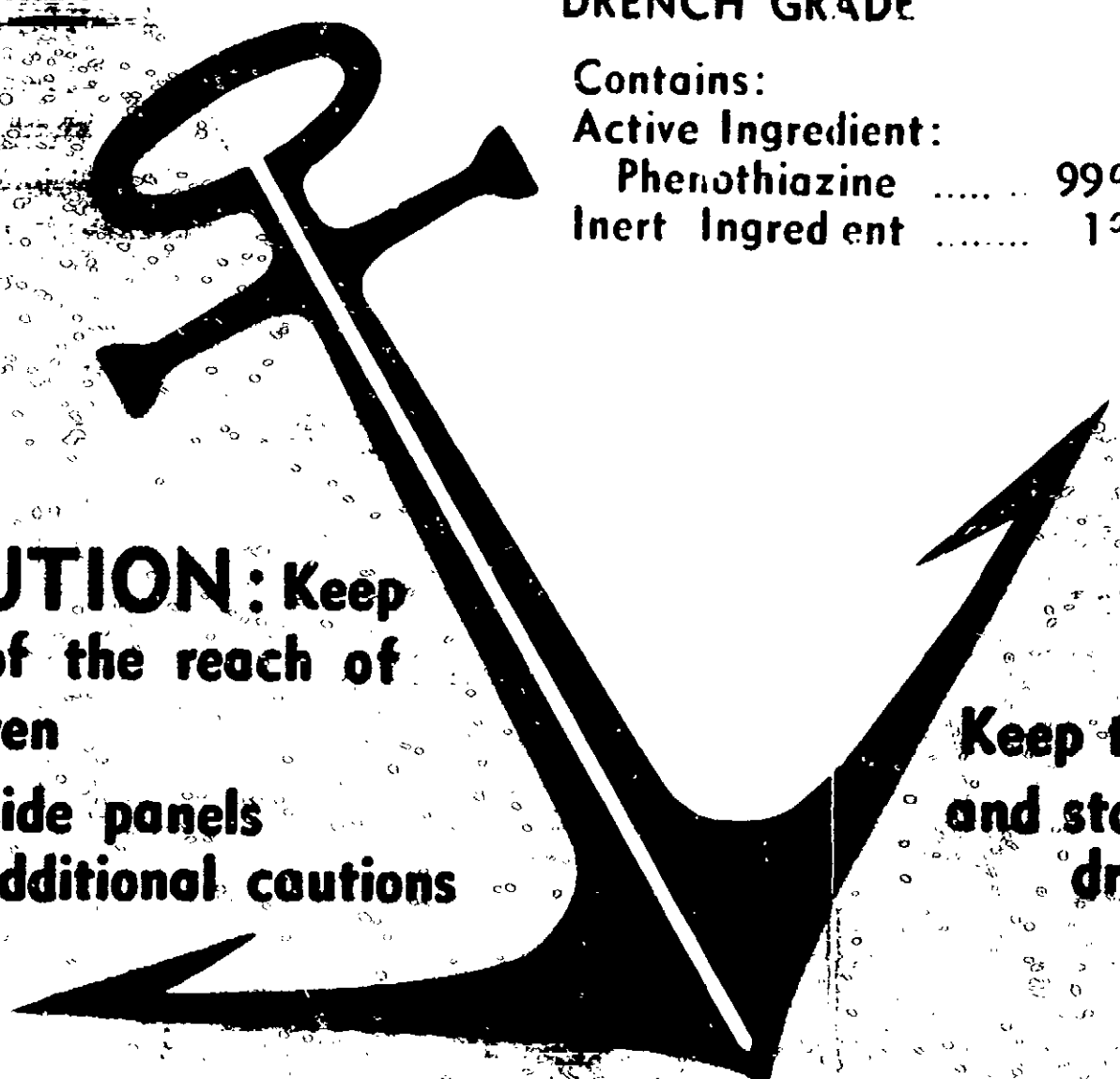
the following amounts of

| No. Animals Treated With Feed | Trace Mineral Salt Mix | |
|-------------------------------|---|--|
| | To Mix | Animal Should Eat |
| 227 | | 3 oz. |
| 908 605 454 362 | 1 lb. Fen-Zene to 17 lb. Trace Mineral Salt Mixture | 1/3 oz. 1/2 oz. 2/3 oz. 4/5 oz. |
| 454 | | 2/3 oz. |
| 454 | | 1/3 oz. |
| 454 | | 2/3 oz. |
| 327 | | 1 oz. |
| 227 | | 1 1/2 oz. |

ption does not agree with
 after mixture to assure the
 e daily rations or mineral
 0 lbs. of ground feed per
 d.
 onful) once a day in the
 onful) once a day in the
 Only



POUNDS AVOIR.



CAUTION: Keep out of the reach of children
 See side panels for additional cautions

Keep tightly closed and store in a cool, dry place

DRENCH GRADE
 Contains:
 Active Ingredient:
 Phenothiazine 99%
 Inert Ingredient 1%

Distributed by

A Division of PHILIPS ROXANE, Inc.

listed

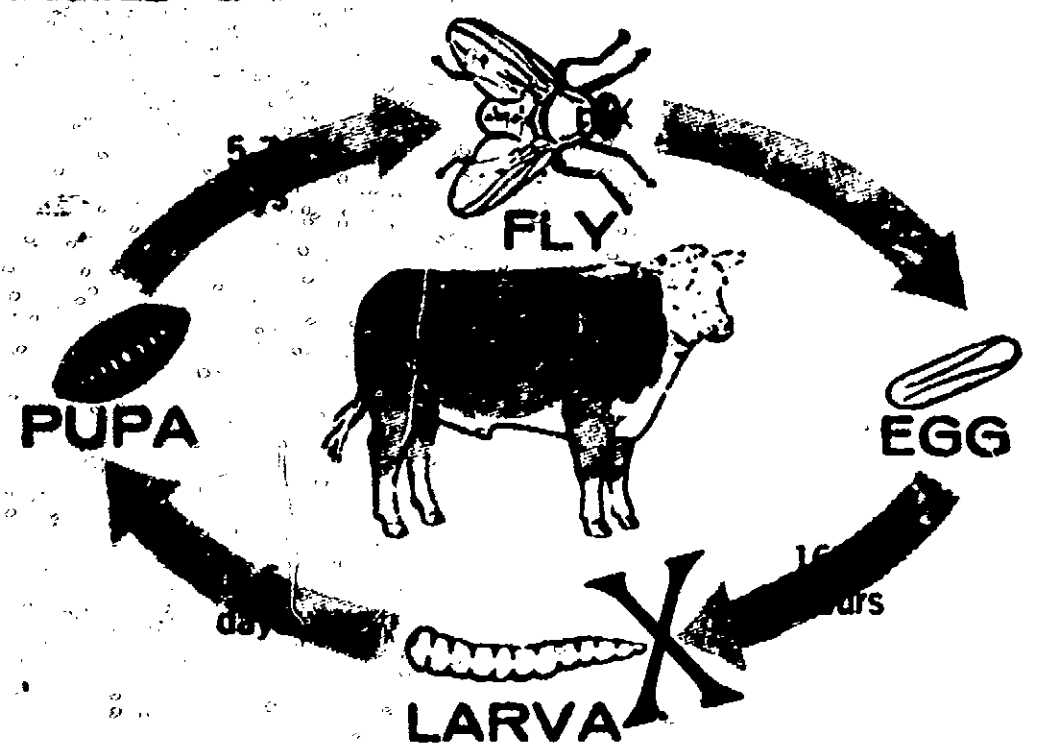
CAUTION: Consult a veterinarian before using in severely debilitated animals or animals in late pregnancy. Do not exceed the recommended dose. Do not fast animals. Do not use in calves less than 3 months or lambs less than 1 month of age. In susceptible animals Phenothiazine may be toxic. Use cautiously in cattle and horses.

Warning: Do not feed to lactating dairy animals at low-level administration.

HAZARDOUS — Not for human use

U.S.D.A. Reg. No. 4691-56

THE HORN FLY AND FACE FLY CYCLE



Breaks the life cycle at "X" Prevents the breeding of new face flies, horn flies & internal worms

ACCEPTED WITH COMMENTS

POUNDS AVOIR.

PHEN-ZENE PHENOTHIAZINE POWDER

DRENCH GRADE

Contains:

Active Ingredient:

Phenothiazine 99%

Inert Ingredient 1%

ANCHOR

SERUM COMPANY

St. Joseph, Missouri, U. S. A.

listed

ACCEPTED WITH COMMENTS