

# FLAT HUE

**CAUTION: COMBUSTIBLE MIXTURE**

**N.Y.F.D. C. OF A. #2200**

## **DIRECTIONS**

STIR WELL BEFORE USING

**EXTERIOR USE:** May be applied on new or bare wood, or over previously finished surfaces. If the wood has been previously painted, varnished or oiled, FLAT HUE may be applied, just so long as the surface is clean, dry and free from silicone or water repellent wax type finishes. (If a pentachlorophenol primer is desired, use McCLOSKEY ROTT-FYTER.) Apply with brush or roller. Allow to dry 6 to 8 hours, then apply second coat. Two coats are usually sufficient on new wood or surfaces that are not badly weathered. However, if necessary a third coat may be applied, without materially increasing the sheen.

**NOTE:** FLAT HUE has the quality of producing a finish with a uniform sheen. If previously finished surfaces are glossy (such as under the eaves), FLAT HUE may be applied, producing a dull satin sheen.

**INTERIOR USE:** Furniture, wall paneling, woodwork, doors, cabinets and built-ins. Proceed as above.

If greater protection, or a higher sheen, is desired, apply one or two coats of Embler Life Clear Gloss for EXTERIOR use. For INTERIOR use, it is recommended that one of the Heirloom Finishes be used as a top coat. These additional top coats are NOT necessary. Two coats of Flat Hue produce a complete finish in itself.

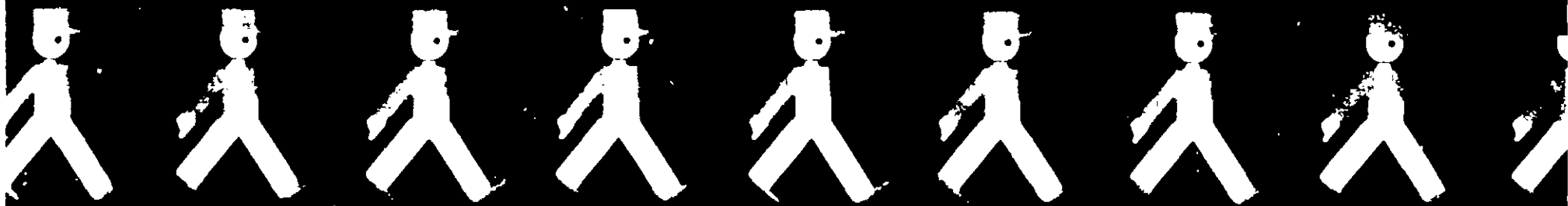
**Caution:** To be sure stain color effect is as desired, make test on piece of scrap wood before proceeding with entire job.

**Coverage:** 200 to 300 square feet per gallon, depending on porosity of wood.

**Thinning:** Flat Hue may be thinned, if desired, with mineral spirits or turpentine.

USDA Reg. No. 4664 - 10

ADD TO KIT



# LUMBER LIFE PRODUCTS

FLAT HUE is far more than an ordinary stain. It is a specially pigmented, penetrating wood finish containing chemicals that will resist mold and also retard checking and warping.

FLAT HUE penetrates deeply into the wood and is highly resistant to the action of sunlight and weather. It is particularly suited for finishing exterior wood surfaces, where a natural appearance is desired. It is a complete finish, but can be varnished or painted over at any time, if desired.

For use on all types of wood siding, trim, shingles, fences, doors, porches, carpets, gable ends, shakes, and garden furniture.

**Caution:** Flat Hue must be used in accordance with the directions on this label to get satisfactory results. Resistant against the effects of mold and the weathering.

Next 203

## LUMBER LIFE FLAT HUE COMPOSITION: by weight:

OF INGREDIENTS IN RECIPE

Pigment

Vehicle

Vehicle

Tinting Colors

**CAUTION:** Handle with care. Keep out of reach of children. Always use proper ventilation and wash thoroughly with soap and water. Store away from open flame.

Made in U.S.A.



**McCLOSKEY VARNISH CO.**

PHILADELPHIA • LOS ANGELES

PORTLAND, OREGON

WAREHOUSES IN PRINCIPAL CITIES

