

CAUTION: COMBUSTIBLE MIXTURE-
N.Y.F.D. C. OF A. #2200
DIRECTIONS

Resistant against the effects of mildew on the varnish film only.
Apply 1 coat of Preservative on bare wood or over Rott-Fyter,
as directed.

Preservative dries dust free in 2 to 4 hours, ready for recoat-
ing in 12 to 16 hours.

FINISHING COATS

Gloss Finish. Apply 2 coats of Clear Gloss Finish over 1 coat of
Preservative.

Termite Protection. Apply ROTT-FYTER as directed, with fol-
lowing coats as suggested above.

PRESERVATIVE should be stirred thoroughly before
it is used. **RECOATING.** Sand or wire brush old finish. Apply
as directed above.

PRESERVATIVE is ideal for use on exterior siding,
window frames, etc., when you want to heighten and protect
the natural beauty of woods such as pine, redwood, cedar,
mahogany, cypress, etc. This preservative resists the effects
of ultraviolet ray.

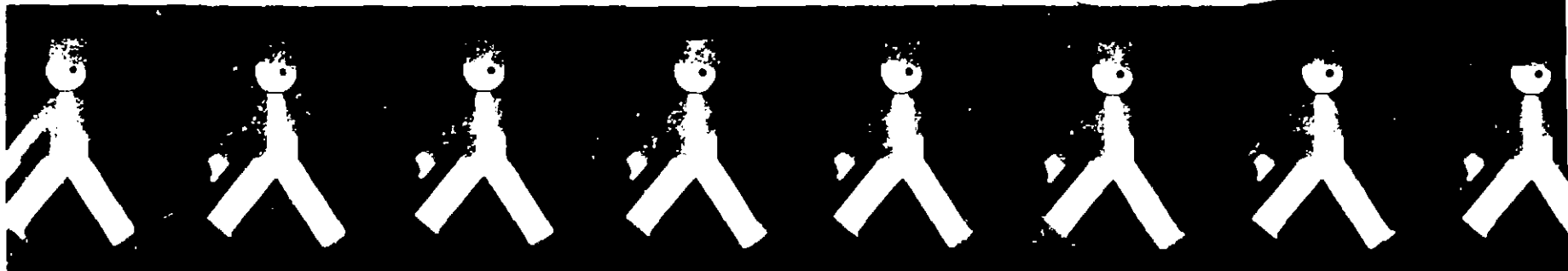
PRESERVATIVE may be applied with a brush, roller,
spray or dip.

PRESERVATIVE covers approximately 400 to 700
square feet per gallon, depending on porosity of the wood.

LUMBER LIFE PRODUCTS can be thinned with turpentine or
paint thinner.

* **CAUTION:** Harmful if swallowed. Keep out of reach of children. Avoid
prolonged contact with the skin, and wash thoroughly with soap and water
after using. Keep away from open flame. Use in a well ventilated room.

USDA Reg. No. 4664



3-4-67
4664-5

LUMBER LIFE PRODUCTS

LUMBER LIFE products are as follows, and are formulated to cover every phase of treating and finishing exterior natural wood structures. They are designed for use on all types of wood including spruce, pine, cedar, cypress and redwood.

1. **Redwood, Rustic Cedar and Driftwood Preservatives.** These are pigmented permanent stains and prime or finish coats. They seal, resist against moisture, control warping and splintering, resist fungus and mildew.

2. **Clear Gloss Finish.** This is a transparent clear gloss prime or finish coat to be applied over bare wood or one of the Preservatives. Resists fungus and mildew.

3. **Flat Hues.** For a flat finish use Lumber Life Flat Hues, designed to result in a flat dull sheen that is ideally suited for all types of exterior use.

4. **Patio Furniture Finish (Redwood or Clear)** a complete finish in itself. No other finish is needed to complete the job. Allows the full beauty of the wood grain to show through.

CAUTION: Lumber Life products must be used in accordance with the directions on this label to get satisfactory results. When only Clear Gloss is used you lose the value of the protective shield against the sun's ultra violet rays offered by one of the Preservatives.

Lumber Life products (except Patio Furniture Finish) dry with a soft film and should not be put on those places that may come in contact with hands or feet.

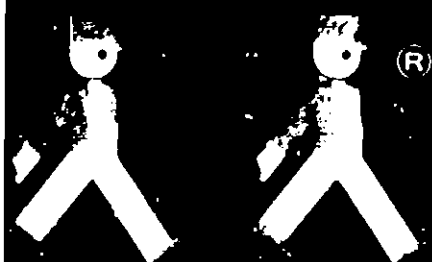
LUMBER LIFE CLEAR GLOSS FINISH

Composition (by weight)

Non-volatile - Phenolic Resin, Tung Oil, Safflower Oil, Alkyd	60%
Volatile - Petroleum Thinner	40%
	100%

FOR DETAILED INFORMATION ON EACH PRODUCT SEE DIRECTIONS ON LABEL

Made in U. S. A.



McCLOSKEY VARNISH CO.
PHILADELPHIA • LOS ANGELES
PORTLAND, OREGON
WAREHOUSES IN PRINCIPAL CITIES