

CAUTION COMBUSTIBLE MIXTURE
N.Y.F.D.C. OF A. 2200

DIRECTIONS

READ WELL BEFORE USING

Resistant against the effects of mildew on the varnish film only. Apply 1 coat of Preservative on bare wood or over Rott-Fyter, as directed.

Preservative dries dust free in 2 to 4 hours, ready for recoating in 12 to 16 hours.

FINISHING COATS

Gloss Finish. Apply 2 coats of Clear Gloss Finish over 1 coat of Preservative.

Termite Protection. Apply ROTT-FYTER as directed, with following coats as suggested above.

PRESERVATIVE should be stirred thoroughly before it is used. **RECOATING.** Sand or wire brush old finish. Apply as directed above.

PRESERVATIVE is ideal for use on exterior siding, window frames, etc., when you want to heighten and protect the natural beauty of woods such as pine, redwood, cedar, mahogany, cypress, etc. This preservative resists the effects of ultraviolet ray.

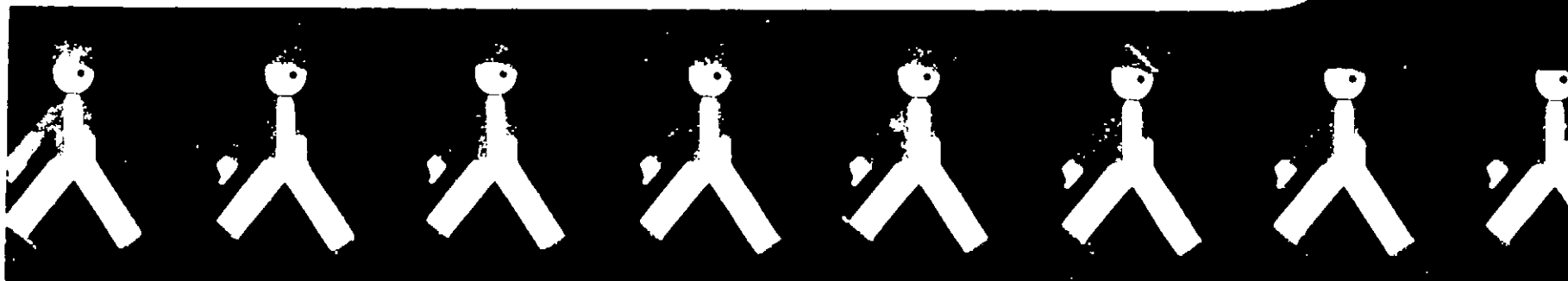
PRESERVATIVE may be applied with a brush, roller, spray or dip.

PRESERVATIVE covers approximately 400 to 700 square feet per gallon, depending on porosity of the wood.

LUMBER LIFE PRODUCTS can be thinned with turpentine or paint thinner.

* **CAUTION:** Harmful if swallowed. Keep out of reach of children. Avoid prolonged contact with the skin, and wash thoroughly with soap and water after using. Keep away from open flame. Use in a well-ventilated room.

USDA Reg. No. 4664-3



CLOSKEY

with special additives that
prevent mildew and fungus growth



REDWOOD PRESERVATIVE

Active Ingredient	0.05%
di-phenylmercury	
dodecanyl succinate	
Inert Ingredient	99.95%
	100.00%

CAUTION
Keep out of reach
of Children

ONE U. S.
GALLON

ADDITIONAL WARNING INFORMATION SEE BACK OF LABEL

FOR
EXTERIOR
SIDING

