

DEARCIDE® 707

ALGAEICIDE

FOR THE CONTROL OF MANY OF THE ALGAE
OCCURRING IN INDUSTRIAL COOLING WATER SYSTEMS.

ACTIVE INGREDIENTS

DEHYDROABIETYLAMINE ACETATE	6.25%
ALKYL (70% C ₁₈ , 27% C ₁₆ , 3% C ₁₄)	
TRIMETHYL AMMONIUM CHLORIDE	3.125%
DIALKYL (47% C ₁₂ , 18% C ₁₄ , 10% C ₁₈ , 9% C ₁₆ , 8% C ₁₀ , 8% C ₈)	
DIMETHYL AMMONIUM CHLORIDE	3.125%

INERT INGREDIENTS	87.5%
-------------------	-------

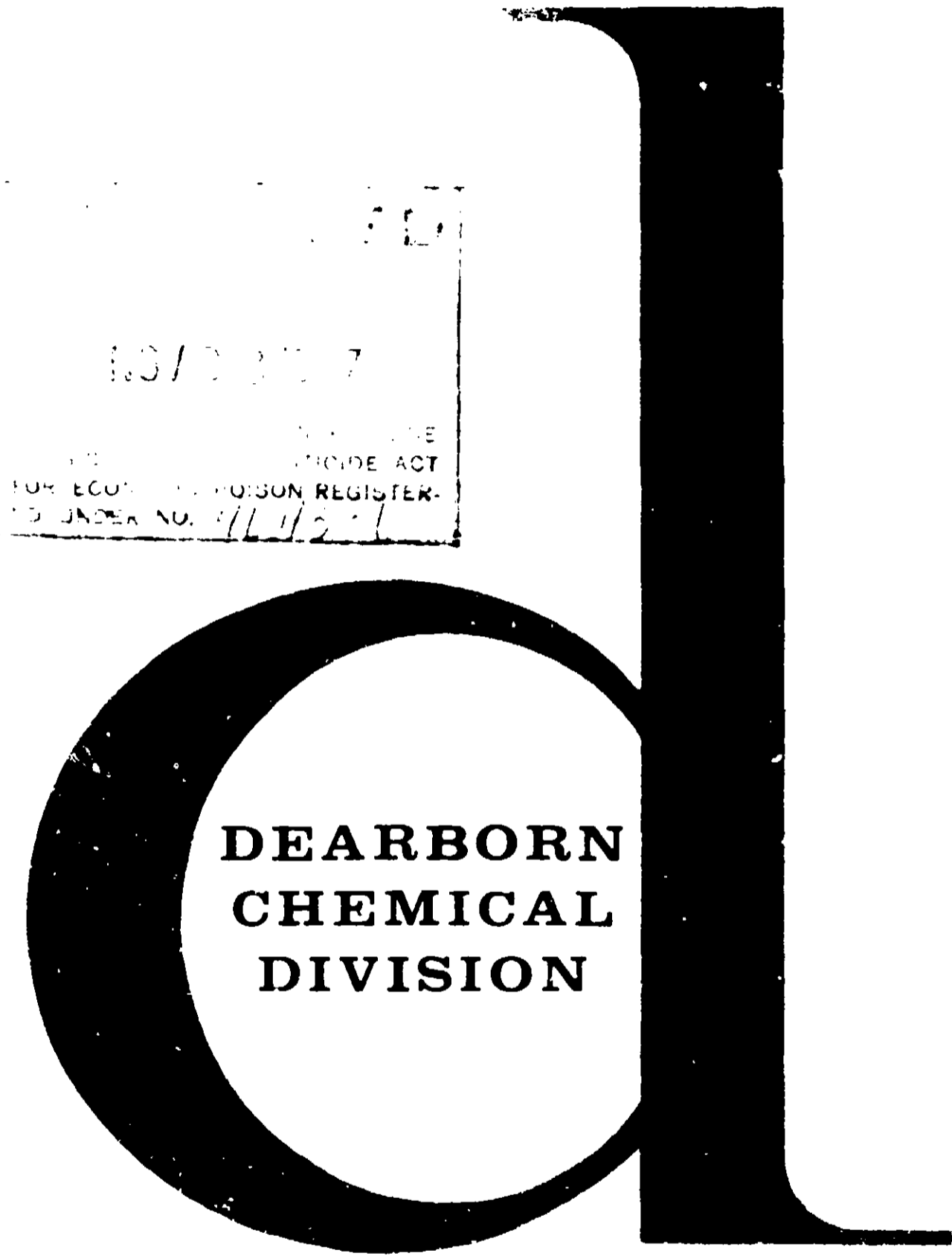
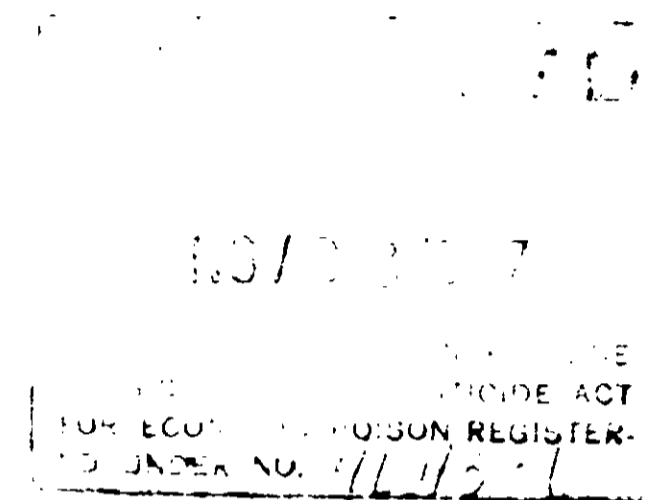
DIRECTIONS FOR USE: Systems not heavily fouled with algae will require 50-125 ppm of DEARCIDE 707 every other day. After control has been attained, the dosage may be reduced to 50-75 ppm and applied every third day. Systems heavily fouled with algae should be mechanically cleaned prior to the use of DEARCIDE 707. See Bulletin 7217 for additional instructions.

**CAUTION: KEEP OUT OF THE REACH OF CHILDREN.
FOR INDUSTRIAL USE ONLY.**

Harmful if swallowed. May cause skin irritation. Avoid contact with skin, eyes or clothing. In case of skin contact, wash with plenty of soap and water. For eyes, flush with water for 15 minutes and get prompt medical attention.

Water treated with DEARCIDE 707 should not be used for food processing, irrigation, or in the manufacture of paper used for food packaging. Do not discharge treated effluent into waters containing fish or shellfish.

KEEP CONTAINER CLOSED WHEN NOT IN USE KEEP FROM FREEZING
USDA Reg. No. 46436 NET CONTENTS _____ Gallons [_____ Pounds]



DEARBORN
CHEMICAL
DIVISION



W. R. GRACE & CO.

Merchandise Mart Plaza • Chicago Illinois 60654



DEARCIDE[®] 707

Unique and Economical Algae Control

APPLICATION:

DEARCIDE[®] 707 is a liquid algicide that is effective against all types of algae, including green, blue-green, and brown algae. It is used in cooling towers, condenser water systems, and other industrial water systems.

ADVANTAGES:

- Convenient to use liquid.
- Economical to use.
- Highly effective.
- Non-corrosive to metals.

DOSAGE

For general algae control, use 100 ppm of DEARCIDE[®] 707. For heavy algae growth, use 200 ppm. For persistent algae growth, use 300 ppm. For severe algae growth, use 400 ppm. For extreme algae growth, use 500 ppm.

FEEDING

DEARCIDE[®] 707 should be fed continuously to maintain a constant concentration of 100 ppm. For heavy algae growth, feed 200 ppm. For persistent algae growth, feed 300 ppm. For severe algae growth, feed 400 ppm. For extreme algae growth, feed 500 ppm.

PRODUCT DATA:

- Active ingredient: 70% DEARCIDE[®] 707
- Appearance: Clear, colorless liquid
- Odor: Slight, sweet odor
- Density: 1.05 g/cm³ at 20°C
- Boiling point: 100°C
- Freezing point: -10°C

LIMITATIONS AND HANDLING:

DEARCIDE[®] 707 is not effective against cyanobacteria (blue-green algae). It is not effective against diatoms and radiolarians. It is not effective against protozoa and bacteria. It is not effective against fungi and molds. It is not effective against viruses and parasites. It is not effective against insects and arachnids. It is not effective against nematodes and annelids. It is not effective against mollusks and crustaceans. It is not effective against fish and amphibians. It is not effective against birds and mammals. It is not effective against reptiles and snakes. It is not effective against plants and animals.

AVAILABLE PACKAGING

DEARCIDE[®] 707 is available in 5-gallon plastic jugs and 20-gallon plastic drums.

REMEMBER WHEN DEARBORN STARTS DOWNTIME STOPS