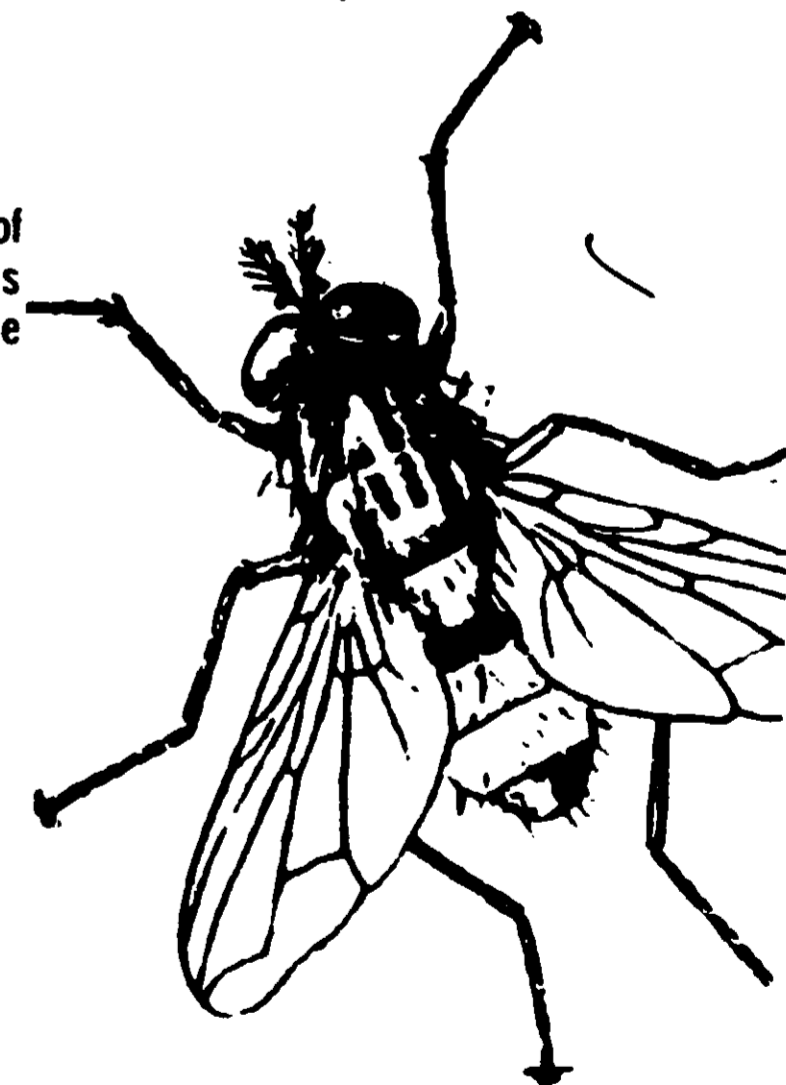
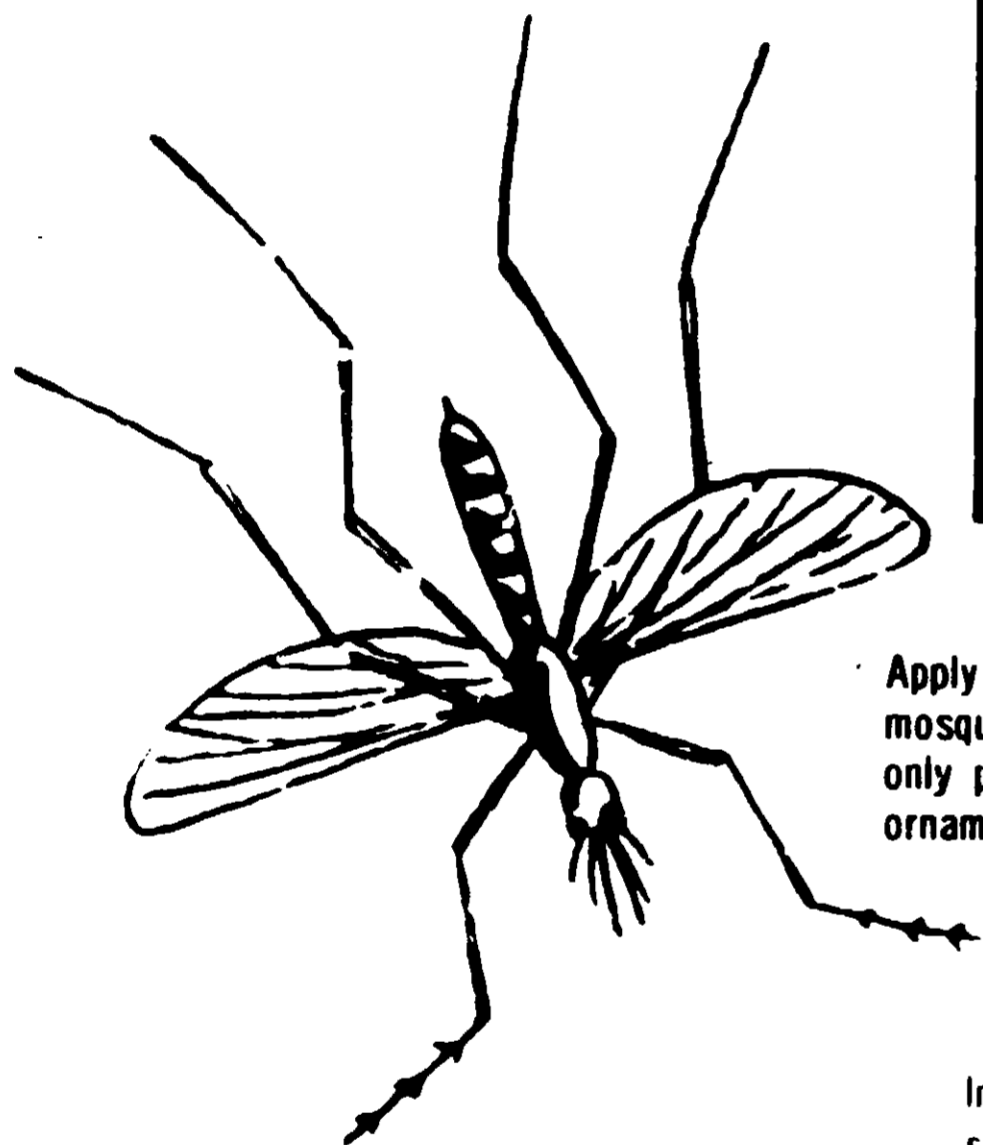


KOR-A-CIDE FOG SPRAY

KORLAN*THANITE**COMBINATION

A READY-TO-USE THERMAL INSECTICIDE FOR OUTDOOR FOGGING IN ALL THERMAL FOGGERS.

CONTROLS: Mosquitoes, Gnats, Moths and Flies.



ACTIVE INGREDIENTS	
Petroleum Hydrocarbon96.000%
Isobornyl Thiocyanacetate	2.025%
Other Active Related Terpenes.475%
Ronnel (O,O-dimethyl O-2,4,5-trichlorophenyl phosphorothioate)	1.000%
INERT INGREDIENTS	
	.500%

*Reg. Trade Mark - Dow Chemical Company
**Reg. Trade Mark - Hercules Powder Company

DIRECTIONS

Apply a barrier of insecticide fog around the perimeter of area to be treated approx. 15 min. before infiltration of mosquitoes (usually at dusk) utilizing wind direction. Air must be relatively still to maintain desired fog pattern as only partial control is obtained when wind is blowing over six miles per hour. Avoid heavy applications to valuable ornamentals. Repeat as often as necessary.

CAUTION

KEEP OUT OF REACH OF CHILDREN

Harmful if swallowed. Avoid inhalation, also contact with skin.

In case of spillage on skin wash with soap and water. Avoid contamination of feed, food crops and food-stuffs. Do not reuse container - destroy when empty.

This product is toxic to fish, keep out of any body of water.

This product is highly toxic to bees exposed to direct treatment or residues on crops. Protective information is available from your cooperative Agri. Extension Services.

WARNING: Combustible Mixture. Do not fog into or near any open flame. Store in cool place, keep container closed and do not pour, spill or store near fire or flame.

Prepared By
LYNDE COMPANY
3040 EAST HENNEP™ AVENUE
MINNEAPOLIS, MINN. A 55413

4591-61

ACCEPTED
APR 20 1973
FURTHER COMMENTS.

EPA REG. No. 4591-61

NET CONTENTS _____