

**DIRECTIONS FOR USE**

**DAIRY CATTLE AND BEEF ANIMALS-** Apply KILO FARM SPRAY as a mist with a good hand sprayer, power or automatic to kill flies on lactating dairy cattle or beef animals. Apply one to two fl. oz. of KILO FARM SPRAY, spray daily.- Cover the animal with a spray, paying particular attention to the head, the back, the sides, the belly and legs.- Apply the spray so as to wet the hair. Do not apply in excess of two fl. oz. per animal per day.

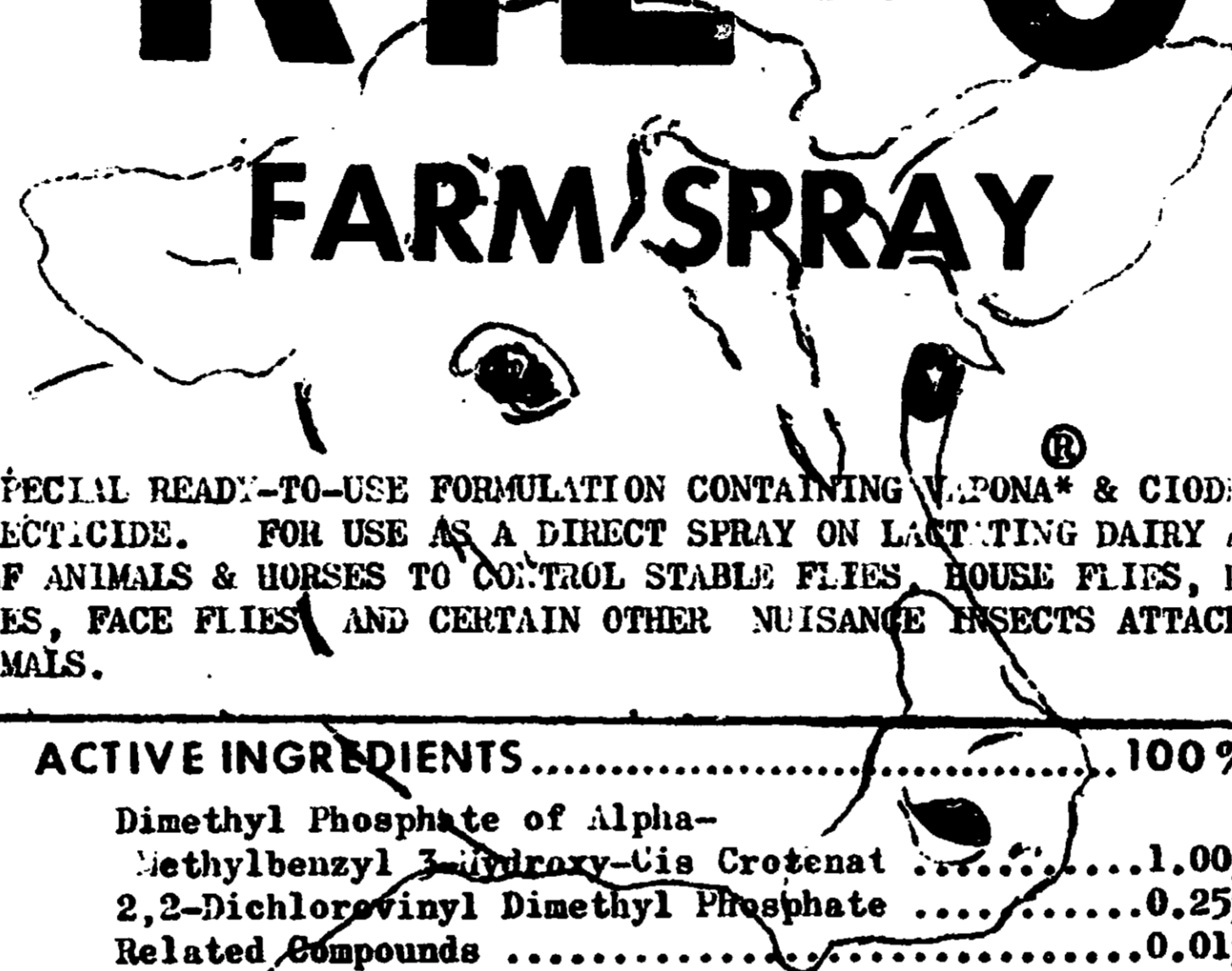
**HORSES-** Apply KILO FARM SPRAY as a light spray or sponge lightly on the horses. Use one to two oz. per adult animal per day to control horn flies stable flies, and certain other nuisance insects attacking animals. Apply until hair is moistened, but do not-soak hide. Do not apply in excess of two fluid ounces per animal per day.

In a complete fly control program these sprays should be used in combination with residual insecticides and sanitary measures.

Since the use of this material is beyond the control of the seller, seller makes no warranty of any kind, express or implied, concerning the use of this product.

# KILO

## FARM SPRAY



A SPECIAL READY-TO-USE FORMULATION CONTAINING VAPONA® & CIODRIN® INSECTICIDE. FOR USE AS A DIRECT SPRAY ON LACTATING DAIRY AND BEEF ANIMALS & HORSES TO CONTROL STABLE FLIES, HOUSE FLIES, HORN FLIES, FACE FLIES AND CERTAIN OTHER NUISANCE INSECTS ATTACKING ANIMALS.

<b>ACTIVE INGREDIENTS</b> .....	<b>100 %</b>
Dimethyl Phosphate of Alpha-Methylbenzyl 3-Hydroxy-Cis Crotenat .....	1.00% a
2,2-Dichlorovinyl Dimethyl Phosphate .....	0.25% b
Related Compounds .....	0.01% b
Petroleum Hydrocarbons .....	98.75%
* REG. TRADE MARK-SHELL CHEMICAL CO., NEW YORK, N.Y.	
a Ciodrin Insecticide	
b Equivalent to 0.25% Vapona Insecticide	

**CAUTION** KEEP OUT OF REACH OF CHILDREN

AVOID PROLONGED OR REPEATED inhalation of mist and contact with skin. In case of contact with skin or eyes, flush with plenty of water, for eyes get medical attention. Keep away from open flame. Wash thoroughly with soap and water after handling and before eating or smoking. Do not contaminate feed, water or foodstuffs. Keep out of reach of children- If swallowed, induce vomiting immediately and get medical attention- Atropine is antidotal.

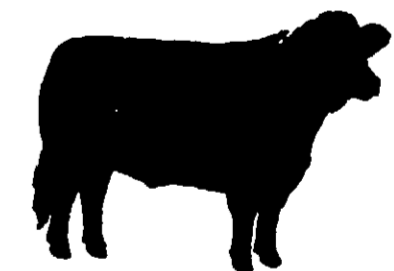
Prepared By  
**THE LYNDE COMPANY**

801 Hubbard Ave. St. Paul 4, Minn.

USDA REG. NO. 4591-39 NET CONTENTS \_\_\_\_\_

Provides protection against . . .

- HORN FLIES
- STABLE FLIES
- HOUSE FLIES
- FACE FLIES



2-16-67  
4591-39