

ACCEPTED

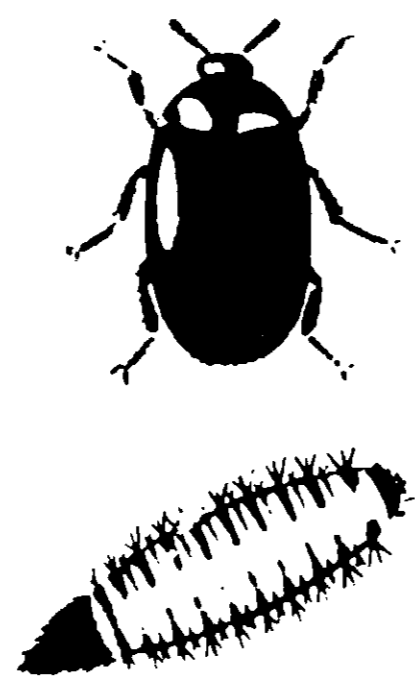
2/17-167

4591-19

# LYNDE MALA-CIDE

A ready-to-use spray designed for use in Dry Milk and Cereal Processing Plants for control of such insects as *Trogoderma inclusum* (larger cabinet beetle), *Trogoderma glabrum*, *Attagenus piceus* (black carpet beetle) and other related species.

Mala-Cide is a combination of premium grade malathion for residual control and synergized pyrethrin for quick insect flushing.



ACTIVE INGREDIENTS.....	100%
Petroleum distillate, deodorized.....	97.684
O, O-dimethyl dithiophosphate of diethyl mercaptosuccinate* .....	2.000
N-octyl bicycloheptene dicarboximide**..	0.166
Technical piperonyl butoxide***.....	0.050
Pyrethrins.....	0.050

\*Malathion  
 \*\*MGK 264, Insecticide Synergist U.S. Pat. No. 2,476,512  
 \*\*\*Consists of (butyl carbityl) (6-propyl piperonyl) ether and related compounds.



### DIRECTIONS

**Residual Spraying** - Use Mala-Cide in a residual type sprayer such as the Lofstrand Sprayer and apply as a coarse spray at the rate of 1 gal. per 1000 sq. ft. of surface to all sections of the plant and warehouse, but restrict application to those places or surfaces where insects hide or crawl such as cracks, crevices, corners, edges of floors, baseboards, floors, under storage platforms, false ceilings, under and behind processing equipment and to either areas in which milk powder or other material may accumulate. Spray screens and frames on doors and windows.

**Box Cars** - Spray all cleaned cars at rate of 1 gal. per 1000 sq. ft. surface and after spraying floors and walls line with kraft paper. Repeat as necessary.

**Space Spraying** - For areas which restrict individual movement a space spray may be advisable, eg. low attic spaces, false ceilings, basement crawl spaces, etc. Enclose all open containers and equipment. Apply spray with Microsol Fog Generator or similar unit until the space being treated is thoroughly fogged.

### KEEP OUT OF

### CAUTION REACH OF CHILDREN

Harmful if swallowed. Keep out of reach of children. Avoid prolonged breathing of spray mist and repeated contact with skin; wash thoroughly after using. Avoid contamination of feed and food-stuffs. Do not use or store near heat or open flame.

Prepared by

**THE LYNDE COMPANY**  
~~MINNEAPOLIS, MINN.~~ ST. PAUL 4, MINNESOTA  
 801 MERCER AVE

USDA  
 Reg. No. 4591-19

Net Contents