

**SUPER POLYPHENE** is a one-step germicide, fungicide, soapless cleaner and deodorant, designed and recommended for use in health care facilities. **SUPER POLYPHENE** is non-selective and when used as directed will not harm tile, terrazzo, resilient floors, painted or varnished wood and metal.

**MINIMUM PHENOL COEFFICIENTS: (A.O.A.C. 20° C)**

**S. aureus** ..... 23.00    **S. typhosa** ..... 19.30

**USE DILUTION (A.O.A.C. 11th ed., 1970)**

Super polyphene meets the passing requirements of 1:256 use dilution against **S. aureus** (ATCC 6538), **S. choleraesuis** (ATCC 10708) and **Ps aeruginosa** (ATCC 15412) when tested by A.O.A.C. procedure.

**DANGER:** Keep out of Reach of Children. Corrosive. Causes eye damage and skin irritation. Do not get in eyes, on skin or on clothing. Protect eyes and wear rubber gloves when handling. Harmful or fatal if swallowed. Avoid contamination of food.

**FIRST AID:** In case of contact, immediately flush eyes or skin with plenty of water for at least 15 minutes. For eyes, call a physician. Remove and wash contaminated clothing before reuse. If swallowed, drink promptly a large quantity of milk, egg whites, gelatin solution or if these are not available, drink large quantities of water. Avoid alcohol. Call a physician immediately.

**NOTE TO PHYSICIAN:** Probable mucosal damage may contraindicate the use of gastric lavage. Measures against circulatory shock, respiratory depression and convulsion may be needed.

Mayfair

**SUPER POLYPHENE**  
**DISINFECTANT — DETERGENT**

EPA REG. NO. 4501-5

**ACTIVE INGREDIENTS:**

**Sodium o-benzyl p-chlorophenate**.... 11.00%

**Sodium o-phenylphenate** ..... 9.00%

**Sodium p-tertiary-amylphenate** ..... 2.25%

**INERT INGREDIENTS:** ..... 77.75%

**DANGER: KEEP OUT OF REACH OF CHILDREN.**  
**SEE ANTIDOTE STATEMENT AND OTHER PRECAUTIONS ON SIDE LABEL.**

**NET CONTENTS: 64 FL. OZ. ( 1/2 U.S. GAL.)**

DISTRIBUTED BY

**WESTERN CHEMICAL COMPANY**

1500 DAVIDSON AVENUE • SAN FRANCISCO, CALIFORNIA 94124

Valencia 6-3636

SPECIALISTS IN SCHOOL AND INDUSTRIAL FLOOR FINISHES AND EQUIPMENT

fungicide, soapless  
d for use in health  
e and when used as  
painted or varnished

. 20° C)

19.30

nents of 1:256 use  
, S. choleraesuis  
(412) when tested

rosive. Causes eye  
skin or on clothing.  
ndling. Harmful or

h eyes or skin with  
es, call a physician.  
reuse.

of milk, egg whites,  
k large quantities of  
ely.

e may contraindicate  
atory shock, respira-

# Mayfair

## **SUPER POLYPHENE DISINFECTANT — DETERGENT**

EPA REG. NO. 4501-5

### **ACTIVE INGREDIENTS:**

Sodium o-benzyl p-chlorophenate....	11.00%
Sodium o-phenylphenate .....	9.00%
Sodium p-tertiary-amylphenate .....	2.25%

**INERT INGREDIENTS: .....** 77.75%

**DANGER: KEEP OUT OF REACH OF CHILDREN.  
SEE ANTIDOTE STATEMENT AND OTHER PRE-  
CAUTIONS ON SIDE LABEL.**

**NET CONTENTS: 64 FL. OZ. ( 1/2 U.S. GAL.)**

DISTRIBUTED BY

## **WESTERN CHEMICAL COMPANY**

1500 DAVIDSON AVENUE • SAN FRANCISCO, CALIFORNIA 94124

Valencia 6-3636

SPECIALISTS IN SCHOOL AND INDUSTRIAL FLOOR FINISHES AND EQUIPMENT

## **DIRECTIONS**

**To clean and disinfect** hard surfaces such as floors, walls, tables, tile, use 1/2 oz. of SUPER POLYPHENE to 1 gallon of water. (1:256). Apply to floors with mop. A rag, synthetic sponge or bowl mop may be used for application to other surfaces. In badly soiled areas, cleaning power may be increased by using up to 1 1/2 oz. of SUPER POLYPHENE to 1 gallon of water.

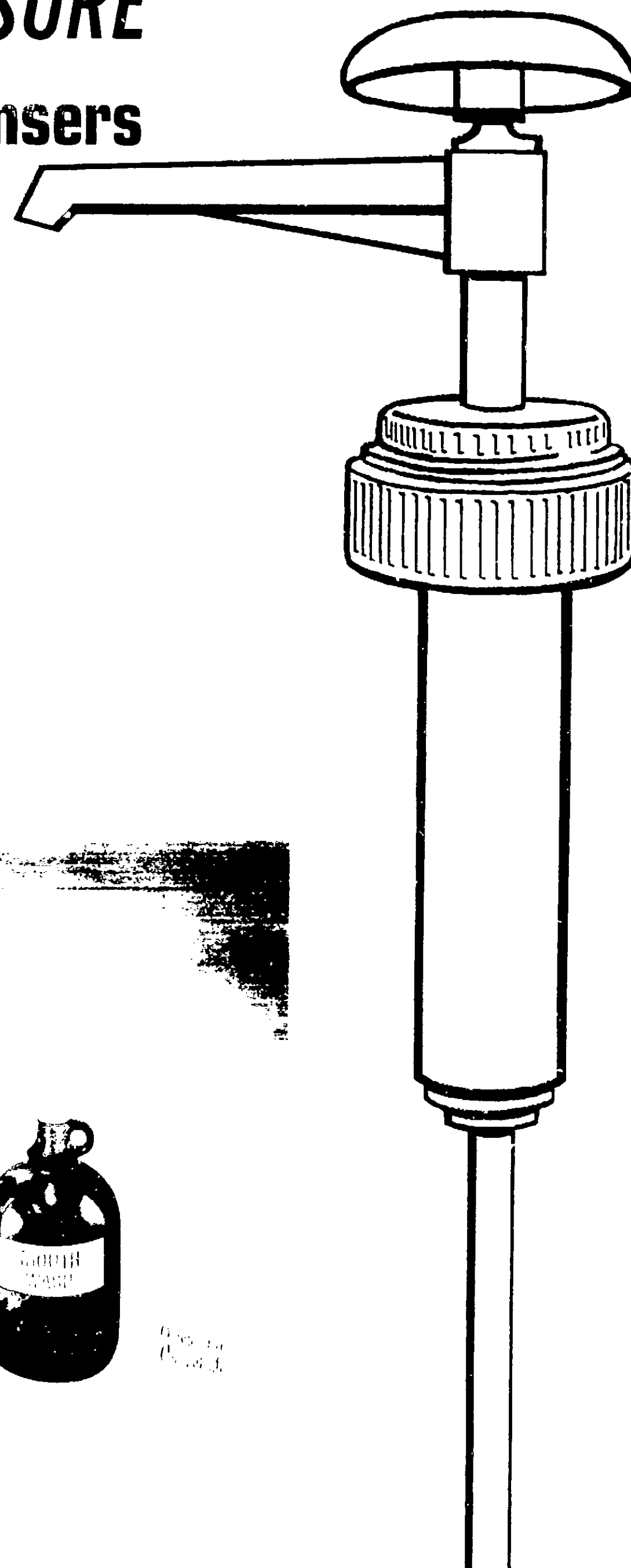
For accurate use control of SUPER POLYPHENE, a dispenser delivering an automatically measured amount of concentrate is recommended. A 1/2 oz. dispenser of this type is available from your SUPER POLYPHENE distributor.

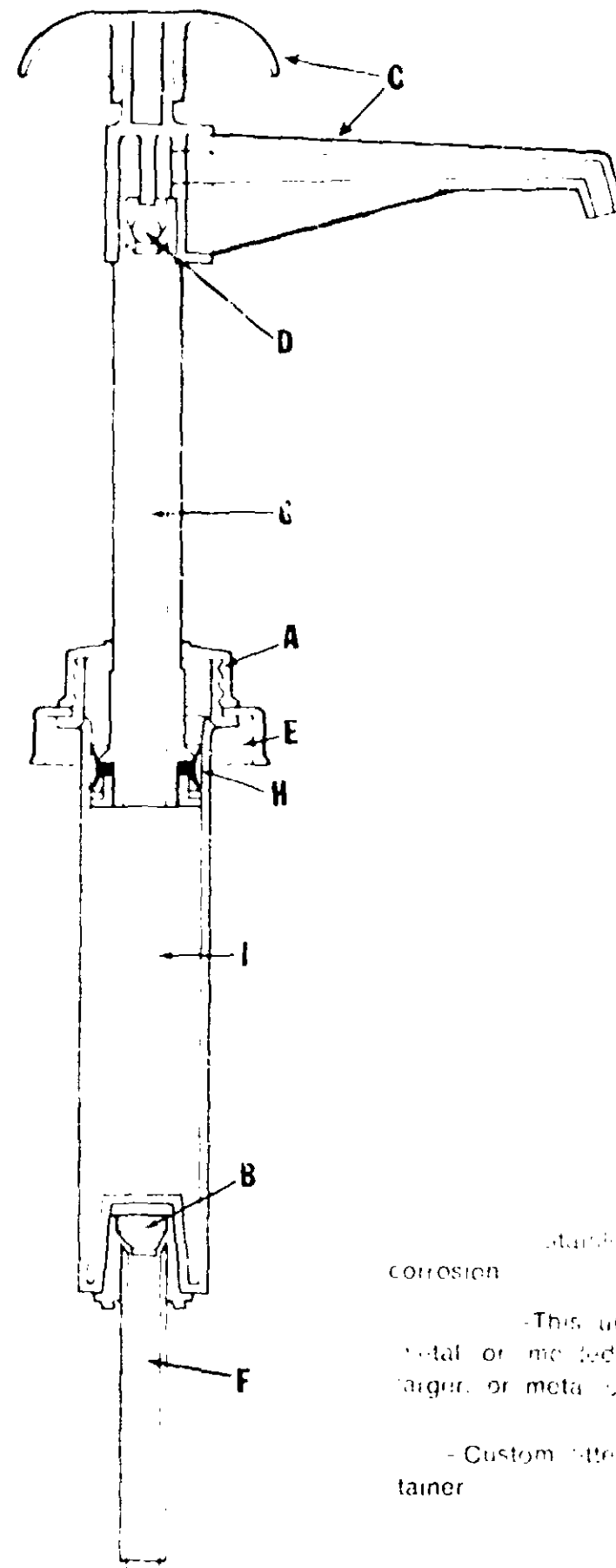
When container is empty rinse thoroughly with water and discard.

# ***METERED MEASURE***

## **Heavy Duty Dispensers**

*Convenience Packaging*  
*Accurate Portion Control*  
*Chemical Compatibility*



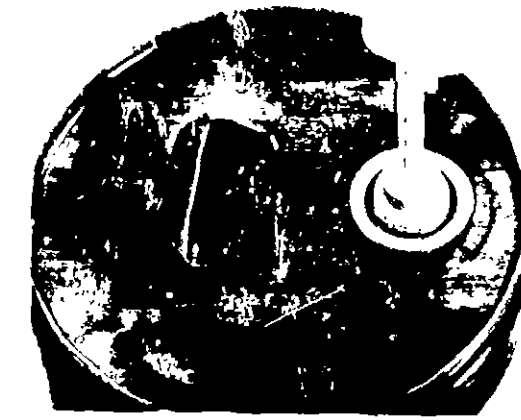


## READILY CLEANED

## NON-CLOGGING FLAPPER VALVE

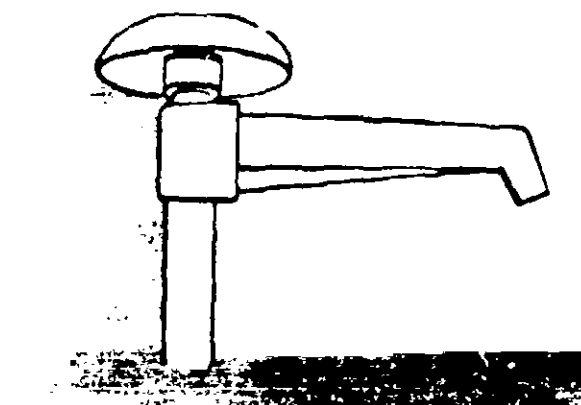
- Standard snap-on ball to eliminate corrosion
- This unit can be assembled with metal or molded screw caps, 28 mm or larger, or metal or plastic snap-on lids
- Custom fitted to the size of your container

## SEP 7 1972 FLEXSPOUT APPLICATION



The dispenser fits perfectly into the mouth of the FLEXPOUT container.

## "MUSHROOM" STYLE HEAD AND REINFORCED ANGLE SPOUT



Designed for durability and ease of operation. Spout is extra long to reach over the side of the container. The angle makes it dispense.

- Standard plunger dispenses 1 fluid ounce per stroke with or without spring. Quantity delivered can be reduced to meet your requirements by using a stroke restriction sleeve.
- double action piston ring is soft and flexible. No blow by. precision molded.
- All new design threaded top for easy cleaning. Special cage to hold flapper valve.

## BROAD RANGE CHEMICAL COMPATIBILITY

BAKAN Offers Dispensers in Three Different Plastic Constructions

DISPENSER CONSTRUCTION	COMPATIBILITY CHARACTERISTICS		TYPICAL PROVEN APPLICATIONS
	SATISFACTORY	UNSATISFACTORY	
Standard One-Ounce Dispenser ABS Resin	<ol style="list-style-type: none"> <li>1. Inorganic Salt Solutions</li> <li>2. Alkalies</li> <li>3. Mineral Acids—Except Strong Oxidizing</li> <li>4. 5. 6. 7. A B Solvents, Mineral, Vegetable or Animal Oils</li> </ol>	Strong Oxidizing Acids Amines Aromatic Hydrocarbons Esters Halogenated Hydrocarbons Phenols	Food Products Cooking Oils Cleaners Waxes Hand Soaps Shampoos Mouth Wash Germicidal Detergents
Kalbe Resin One-Ounce Dispenser	An economical unit suitable for certain concentrations and combinations of chemicals in germicidal detergents.		Germicidal Detergents
Acetal Resin One-Ounce Dispenser	o-Phenylphenol p-Tert Amylphenol o-Benzyl p-chlorophenol 2,2'-Methylenebis(4-chlorophenol) 2,2'-Methylenebis(4-chlorophenol) 2,2'-Methylenebis(4-chlorophenol) 2,2'-Methylenebis(4-chlorophenol) 2,2'-Methylenebis(4-chlorophenol) 2,2'-Methylenebis(4-chlorophenol)	Most Acid Hydrogen Peroxide Bleaches	Germicidal Detergents Pest Control Chemicals