

# TOUCH-N-TRIM GRASS KILLER BAR

1 POUND

## TOUCH-N-TRIM GRASS KILLER BAR

### ACTIVE INGREDIENTS:

Dalapon® (2,2-dichloropropionic acid), sodium salt .....25.5%

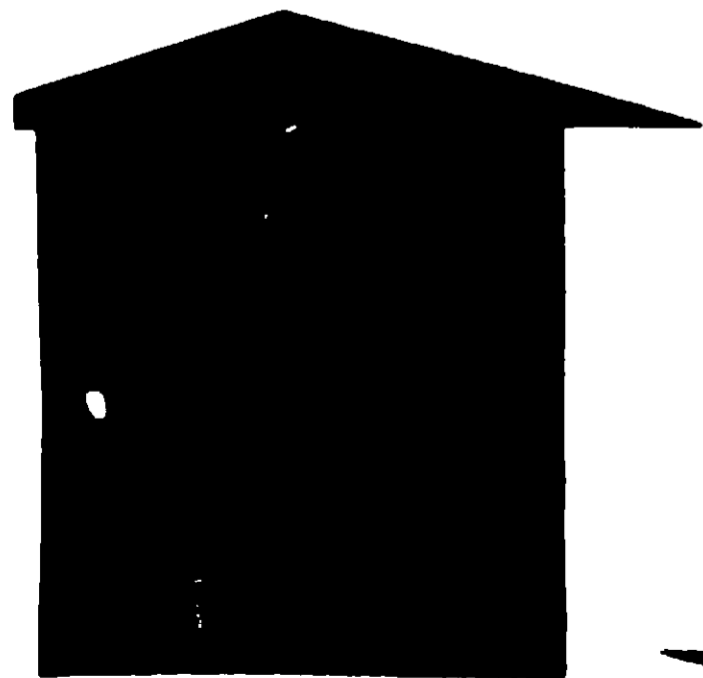
INERT INGREDIENTS: .....74.5%

•2,2-dichloropropionic acid equivalent .....21.6%

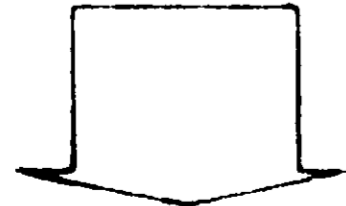
•Trademark of The Dow Chemical Company abroad  
U.S.D.A. Registration No. 4232-23

1 POUND

**CAUTION: KEEP OUT OF REACH OF CHILDREN. SEE OTHER WARNINGS ON BACK PANEL.**

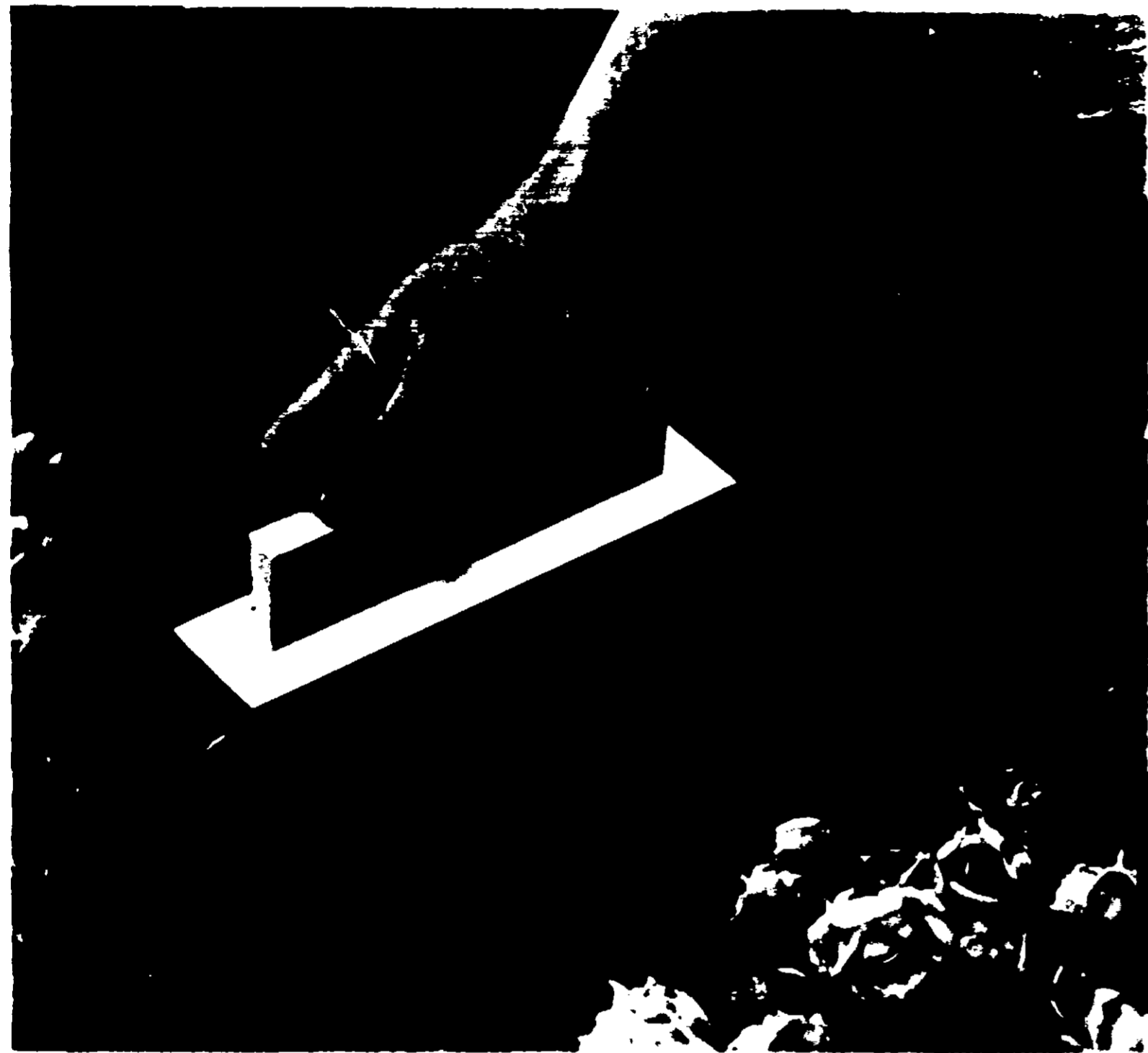


**TOUCH  
N-TRIM  
GRASS  
EDGER**



ACCEPTED  
3-22-71  
INSECTICIDE  
FEDERAL ACT  
REGISTERED  
4232-23

*Comment*



# TOUCH-N-TRIM GRASS KILLER BAR

1 POUND

## TOUCH-N-TRIM GRASS KILLER BAR

### ACTIVE INGREDIENTS:

Dalapon® (2,2-dichloropropionic acid), sodium salt .....25.5%

INERT INGREDIENTS: .....74.5%

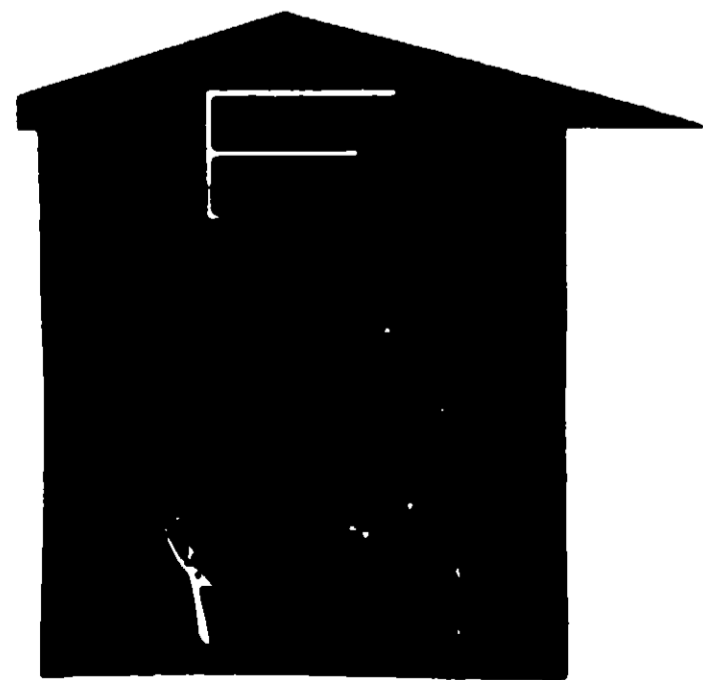
•2,2-dichloropropionic acid equivalent .....21.8%

•Trademark of The Dow Chemical Company abroad

U.S.D.A. Registration No. 4232-23

1 POUND

CAUTION: KEEP OUT OF REACH OF CHILDREN. SEE OTHER WARNINGS ON BACK PANEL.



TOUCH  
N-TRIM  
GRASS  
EDGER



ACCEPTED  
3-22-71  
4232-23

Comment

# Directions for Use

Rub TOUCH-N-TRIM Grass Killer Bar with slight pressure on unwanted grass in patio areas, along curbing, around posts and tree bases or in other areas. The treated grass will stop growing and

**WARNING:** To avoid injury to desirable plants, do not allow the bar to touch such plants. Do not use on desirable turf areas except where the grass is to be controlled or killed. After each use, replace bar in the carton and store in a cool, dry, place.

**CAUTION: MAY CAUSE SKIN IRRITATION.** Avoid Contact with Skin or Clothing. Wash thoroughly with plenty of water and soap after using bar. Do not wear contaminated clothing.

**KEEP OUT OF REACH OF CHILDREN.**

**NOTICE:** Seller makes no warranty of any kind,

Manufactured by

**ROBERT S. WISE CO., INC.**

Des. Pat. No. 200,545

will slowly die. Re-treat as required but in most situations two treatments will give seasonal control.

Use on actively growing grass. One or two treatments during a season will prevent such grasses as Bermuda, zoysia, fescue, and bluegrass from spreading onto patios, sidewalks, flowerbeds and driveways. Some browning along edges of treated areas will occur.

express or implied, concerning the use of this product. Buyer assumes all risk of use or handling, whether in accordance with directions or not.

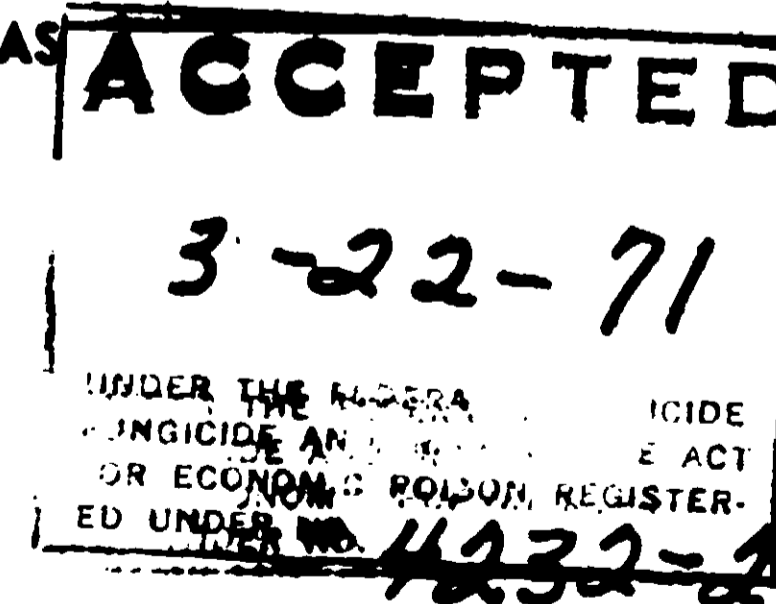
Contents hereof licensed for use under U.S. Patent No. 2,642,354.

Use of this product for weed control is licensed under U.S. Patent No. 3,129,090. Those desiring to use materials from another source in practicing the method claimed in that patent may obtain a license under the patent from Chipman Chemical Company, Inc., Box 1065, Burlingame, California.

**1 POUND**

**TREATS 7,000 FEET**

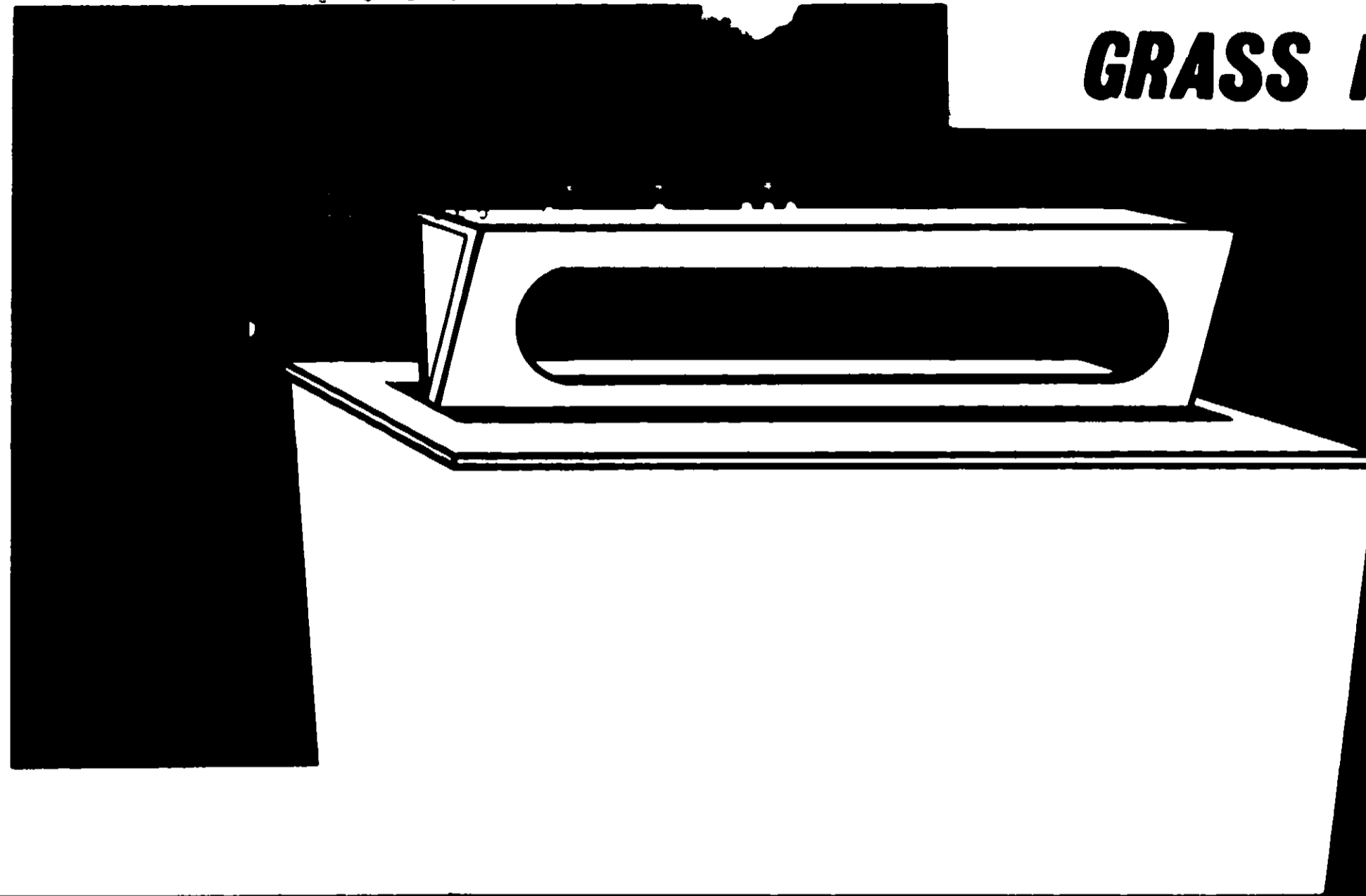
WICHITA, KANSAS



*Comment*

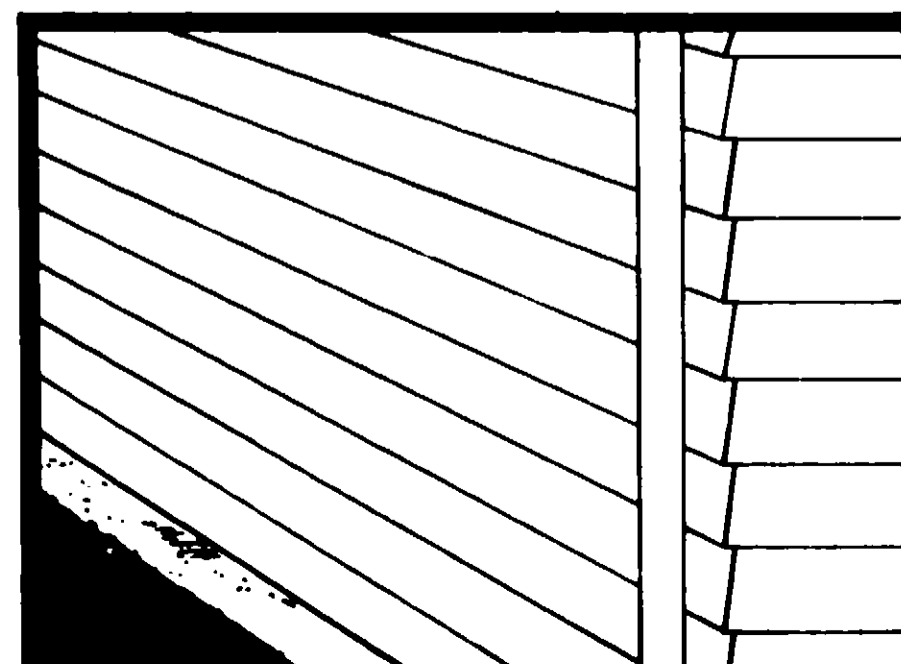
# TOUCH-N-TRIM

## **GRASS KILLER BAR**



**USE THE CHEMICAL WAX BAR THAT  
KILLS GRASS SIMPLY BY TOUCHING!**

**FOR USE AROUND:**

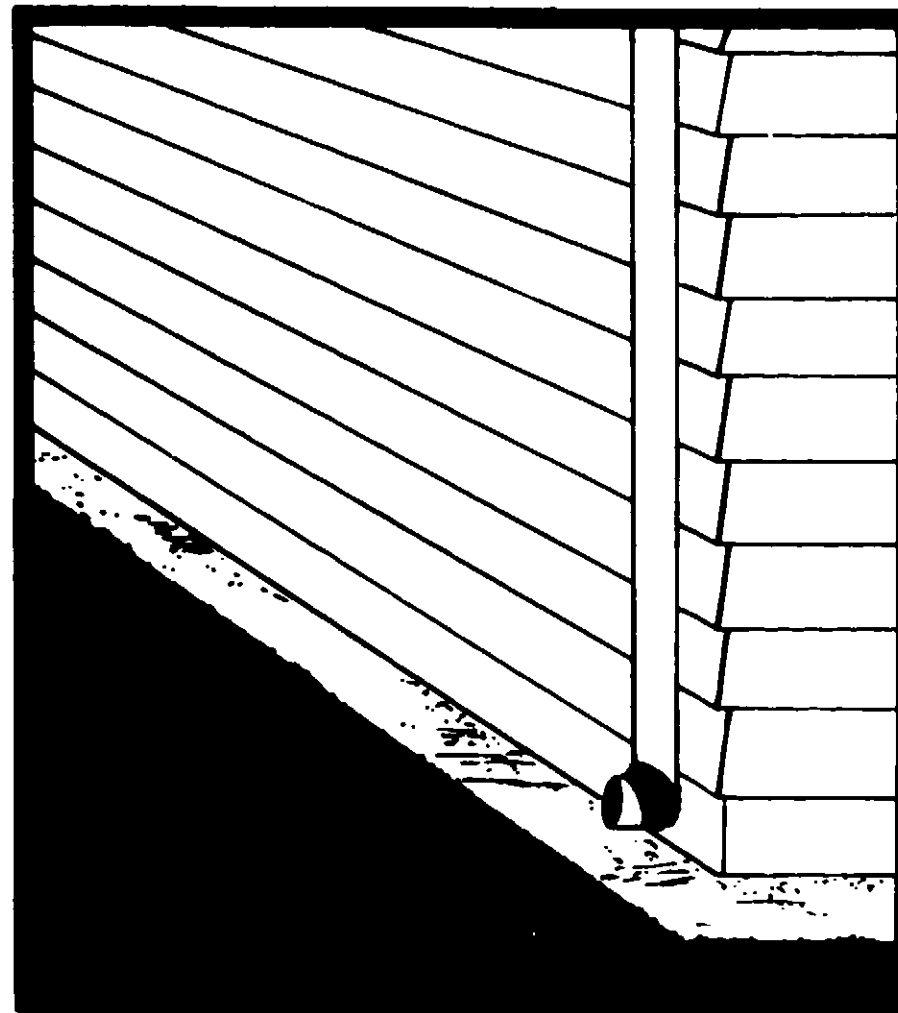


# USE THE CHEMICAL WAX BAR THAT KILLS GRASS SIMPLY BY TOUCHING!

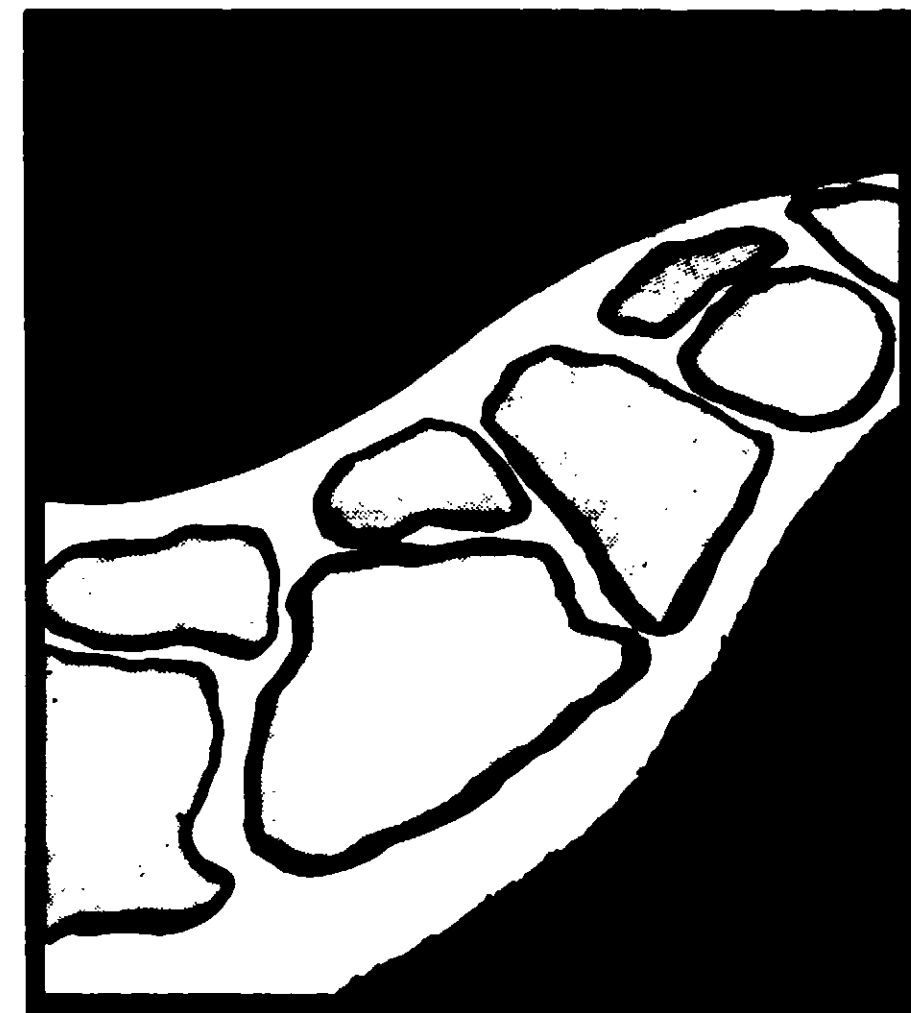
**FOR USE AROUND:**



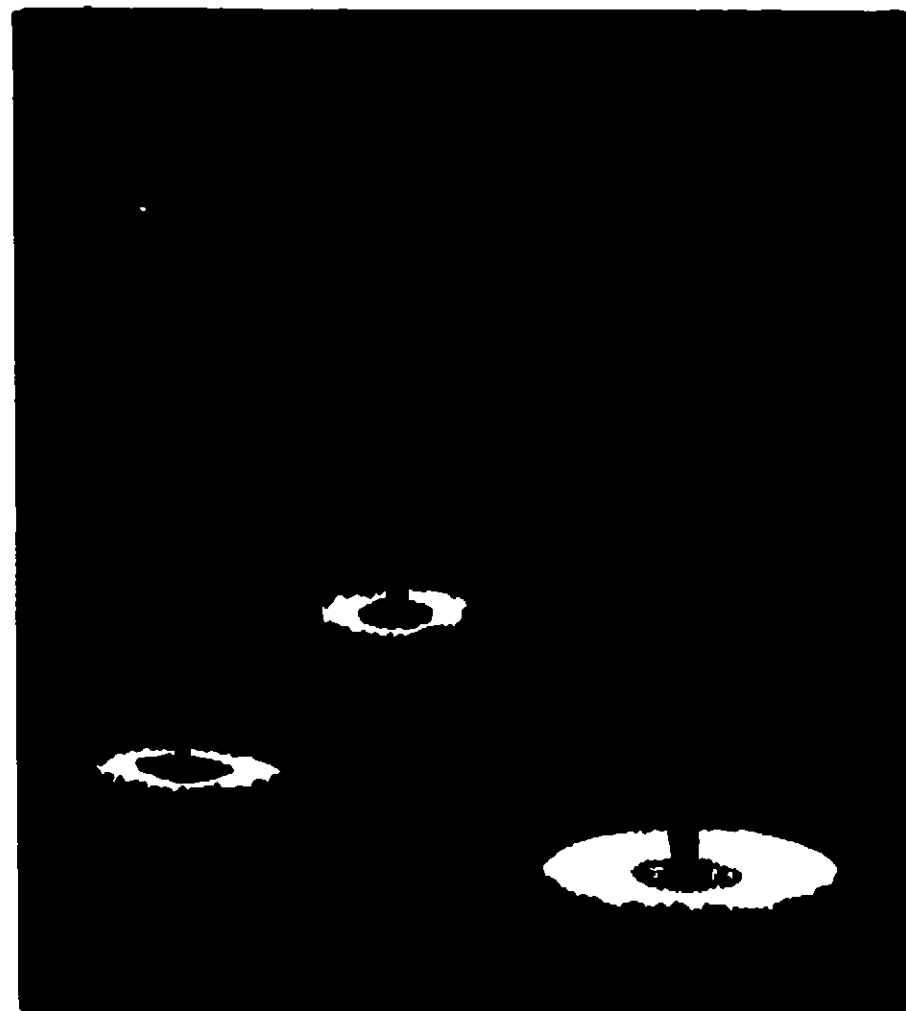
**FENCES**



**BUILDINGS**



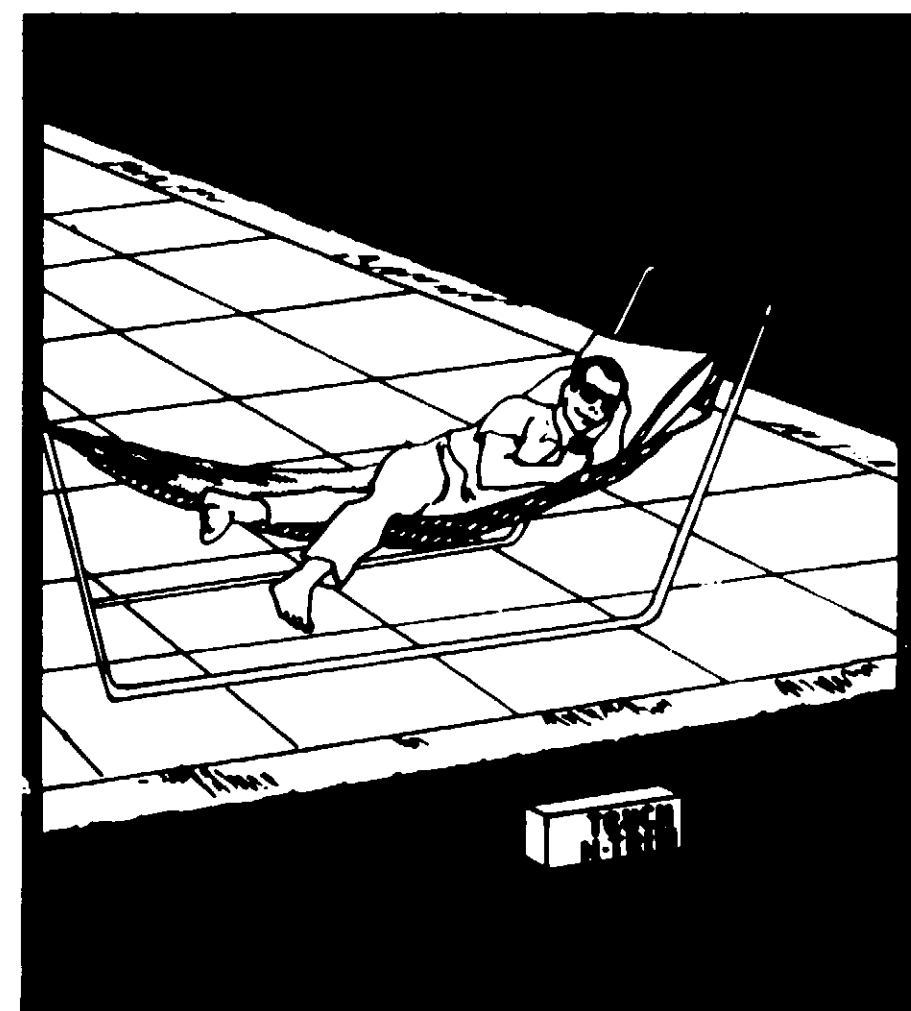
**FLAGSTONE WALKS**



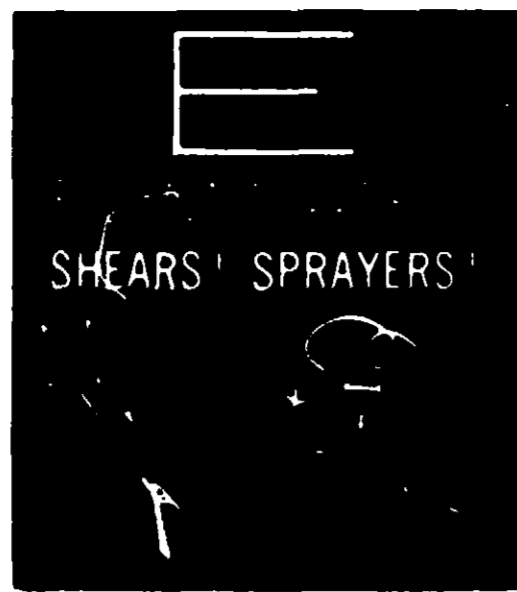
**SHRUBS**



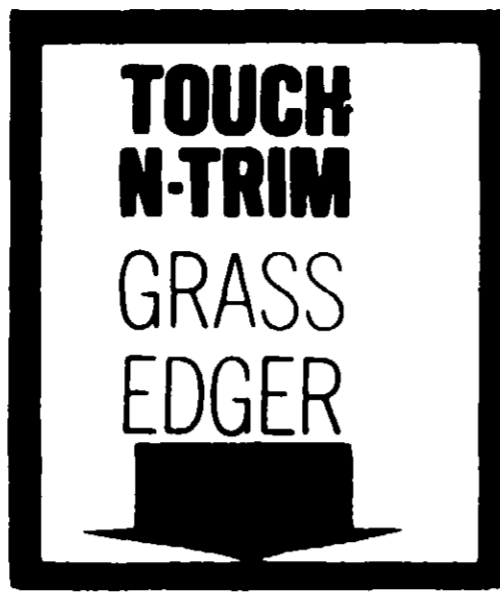
**FLOWER GARDENS**



**PATIOS**



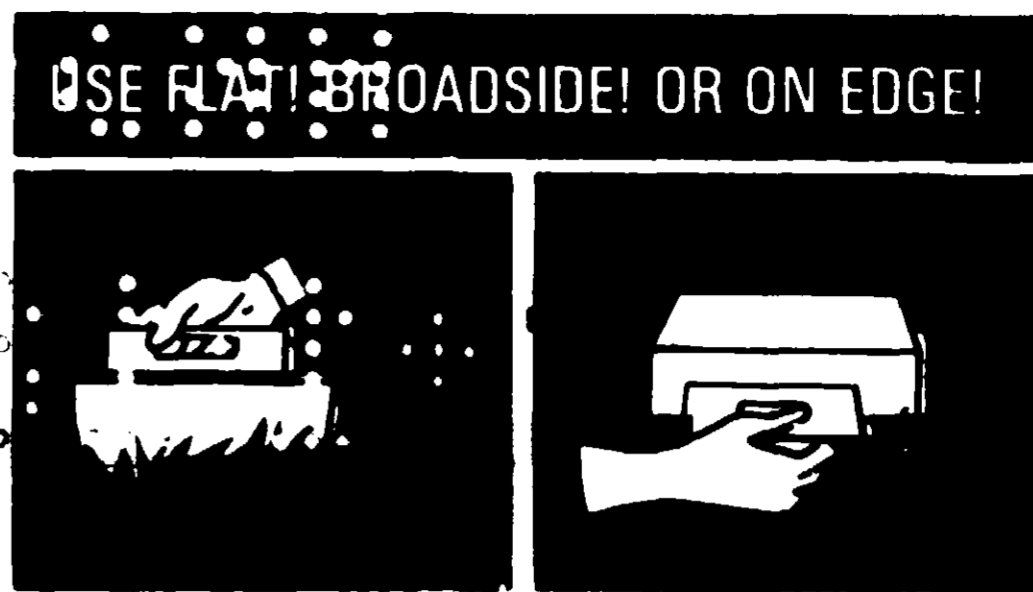
SHEARS | SPRAYERS



**TOUCH  
N-TRIM**  
GRASS  
EDGER



EFFECTIVE  
CONTROL OF  
UNWANTED  
GRASS



USE FLAT! BROADSIDE! OR ON EDGE!

**DIRECTIONS FOR USE:**

Rub TOUCH-N-TRIM Grass Killer Bar with slight pressure on unwanted grass in patio areas, along curbing, around posts and tree bases or in other areas. The treated grass will stop growing and will slowly die. Re-treat as required but in most situations two treatments will give seasonal control.

Use on actively growing grass. One or two treatments during a

season will prevent such grasses as Bermuda, Zoysia, Fescue, and Bluegrass from spreading onto patios, sidewalks, flowerbeds and driveways. Some browning along edges of treated areas will occur.

**WARNING:** To avoid injury to desirable plants, do not allow the bar to touch such plants. Do not use on desirable turf areas except where the grass is to be controlled or killed. After each use, replace bar in the carton and store in a cool, dry place.

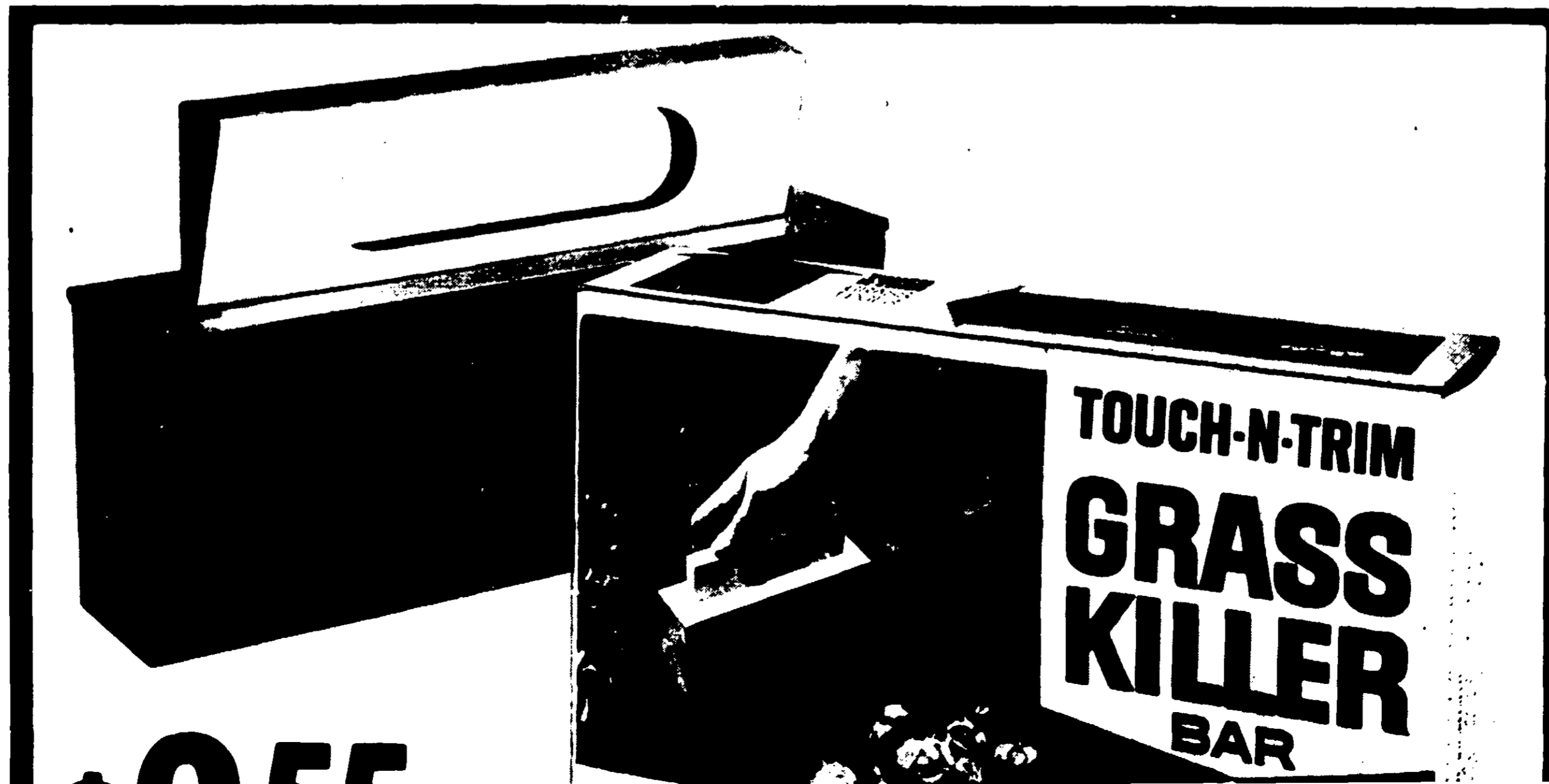
**CAUTION:** MAY CAUSE SKIN IRRITATION. Avoid Contact with Skin or Clothing. Wash thoroughly with plenty of water and soap after using bar. Do not wear contaminated clothing. **KEEP OUT OF REACH OF CHILDREN.**

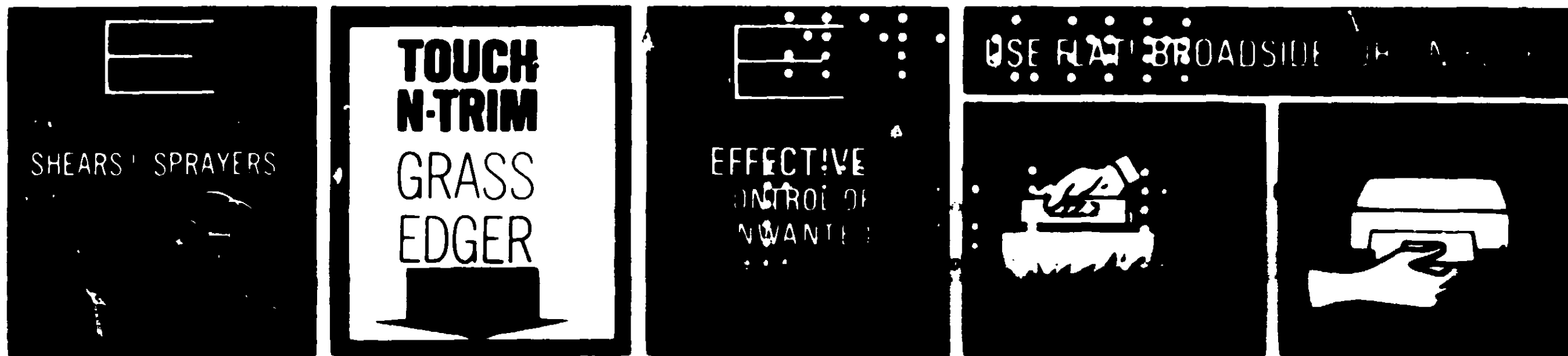
**NOTICE:** Seller makes no warranty of any kind, express or implied, concerning the use of this product. Buyer assumes all risk of use or handling, whether in accordance with directions or not. Des. Pat. No. 200,545. Contents

hereof licensed for use under U.S. Patent No. 2,642,354.

Use of this product for weed control is licensed under U.S. Patent No. 3,129,090. Those desiring to use materials from another source in practicing the method claimed in that patent may obtain a license under the patent from Chipman Chemical Company, Inc., Box 1065, Burlingame, California.

**1 POUND TREATS 7,000 FEET**





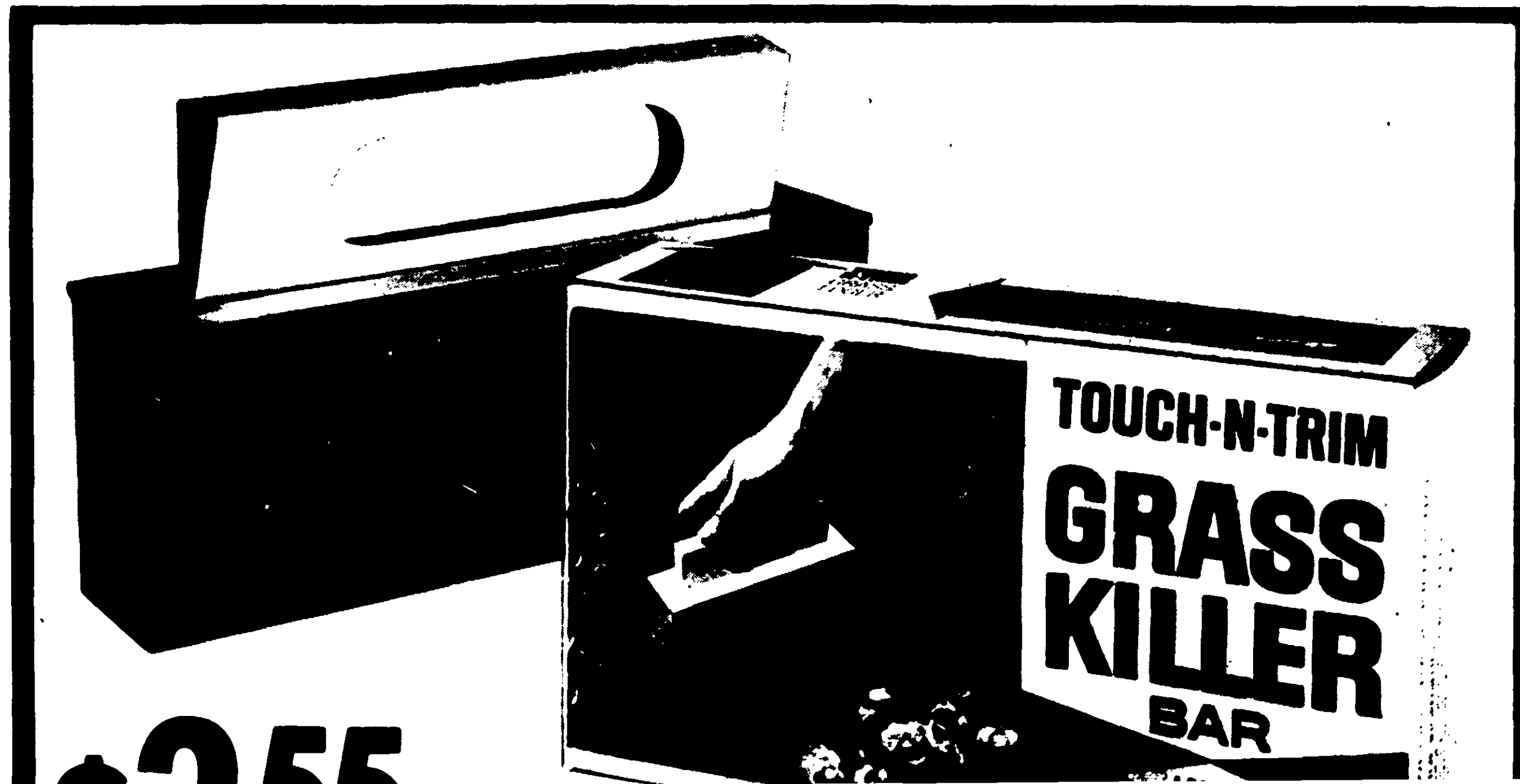
**DIRECTIONS FOR USE:**

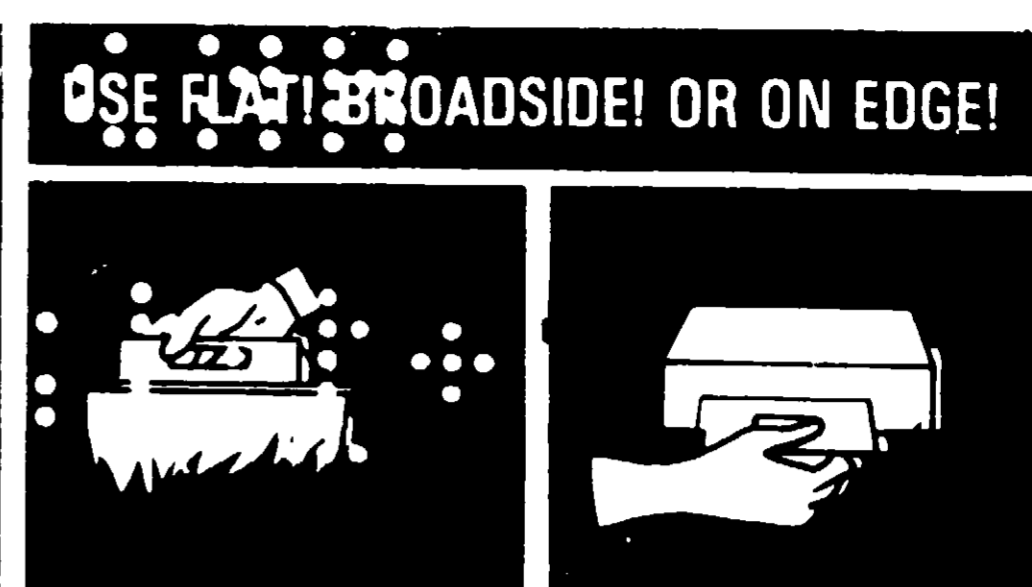
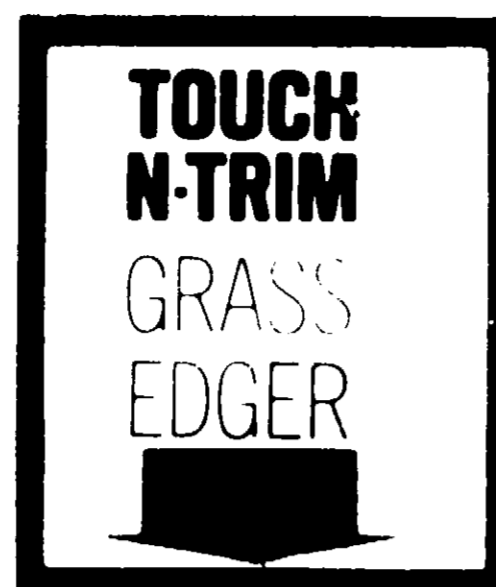
Rub TOUCH-N-TRIM Grass Killer Bar with slight pressure on unwanted grass in patio areas, along curbing, around posts and tree bases or in other areas. The treated grass will stop growing and will slowly die. Re-treat as required but in most situations two treatments will give seasonal control. Use on actively growing grass. One or two treatments during a

season will prevent such grasses as Bermuda, Zoysia, Fescue, and Bluegrass from spreading onto patios, sidewalks, flowerbeds and driveways. Some browning along edges of treated areas will occur. **WARNING:** To avoid injury to desirable plants, do not allow the bar to touch such plants. Do not use on desirable turf areas except where the grass is to be controlled or killed. After each use, replace bar in the carton and store in a cool, dry place.

**CAUTION: MAY CAUSE SKIN IRRITATION.** Avoid Contact with Skin or Clothing. Wash thoroughly with plenty of water and soap after using bar. Do not wear contaminated clothing. **KEEP OUT OF REACH OF CHILDREN.** **NOTICE:** Seller makes no warranty of any kind, express or implied, concerning the use of this product. Buyer assumes all risk of use or handling, whether in accordance with directions or not. Des. Pat. No. 200,545. Contents

hereof licensed for use under U.S. Patent No. 2,642,354. Use of this product for weed control is licensed under U.S. Patent No. 3,129,090. Those desiring to use materials from another source in practicing the method claimed in that patent may obtain a license under the patent from Chipman Chemical Company, Inc., Box 1065, Burlingame, California. **1 POUND TREATS 7,000 FEET**





**DIRECTIONS FOR USE:**  
 Rub TOUCH-N-TRIM Grass Killer Bar with slight pressure on unwanted grass in patio areas, along curbing, around posts and tree bases or in other areas. The treated grass will stop growing and will slowly die. Re-treat as required but in most situations two treatments will give seasonal control.  
 Use on actively growing grass. One or two treatments during a

season will prevent such grasses as Bermuda, Zoysia, Fescue, and Bluegrass from spreading onto patios, sidewalks, flowerbeds and driveways. Some browning along edges of treated areas will occur.  
**WARNING:** To avoid injury to desirable plants, do not allow the bar to touch such plants. Do not use on desirable turf areas except where the grass is to be controlled or killed. After each use, replace bar in the carton and store in a cool, dry place.

**CAUTION:** MAY CAUSE SKIN IRRITATION. Avoid Contact with Skin or Clothing. Wash thoroughly with plenty of water and soap after using bar. Do not wear contaminated clothing. **KEEP OUT OF REACH OF CHILDREN.**  
**NOTICE:** Seller makes no warranty of any kind, express or implied, concerning the use of this product. Buyer assumes all risk of use or handling, whether in accordance with directions or not. Des. Pat. No. 200,545. Contents

hereof licensed for use under U.S. Patent No. 2,642,354. Use of this product for weed control is licensed under U.S. Patent No. 3,129,090. Those desiring to use materials from another source in practicing the method claimed in that patent may obtain a license under the patent from Chipman Chemical Company, Inc., Box 1065, Burlingame, California.  
**1 POUND TREATS 7,000 FEET**





and will slowly die. No-treat as required but in most situations two treatments will give seasonal control. Use on actively growing grass. One or two treatments during a

bar to touch such plants. Do not use on desirable turf areas except where the grass is to be controlled or killed. After each use, replace bar in the carton and store in a cool, dry place.

arranty of any kind, express or implied, concerning the use of this product. Buyer assumes all risk of use or handling, whether in accordance with directions or not. Des. Pat. No. 200,545. Contents

a license under the patent from Chipman Chemical Company, Inc., Box 1065, Burlingame, California.

1 POUND TREATS 7,000 FEET



MANUFACTURED BY ROBERT S. WISE COMPANY, INCORPORATED, WICHITA, KANSAS

	Dealer Wholesale Prices	Retail
Carton 12/1 lb. bars	1-5 Cases 28.40	Retail 3.55
	6 or more 25.56	