

Phenol Coefficients
Salmonella typhosa 8
Staphylococcus aureus 14

Ingredient Statement

| | |
|--|--------|
| ACTIVE INGREDIENTS | |
| Sodium Carbonate | 3.0% |
| Methyl dodecyl benzy trimethyl ammonium chloride | 2.8% |
| Methyl dodecyl xylene bis (trimethyl ammonium chloride) | 0.7% |
| | 6.5% |
| INERT INGREDIENTS | 93.5% |
| | 100.0% |

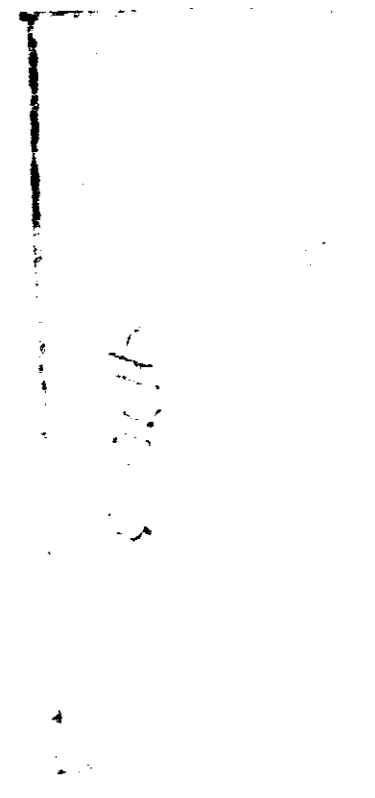
**DISINFECTANT
CLEANER**
DEODORANT • NON-SELECTIVE
RESIDUAL-BACTERIOSTATIC-ACTION

CREATED BY:
BETCO CORPORATION
TOLEDO, OHIO

CAUTION: KEEP OUT OF REACH OF CHILDREN
SEE BACK PANEL FOR OTHER WARNINGS

Nov 2, 1970

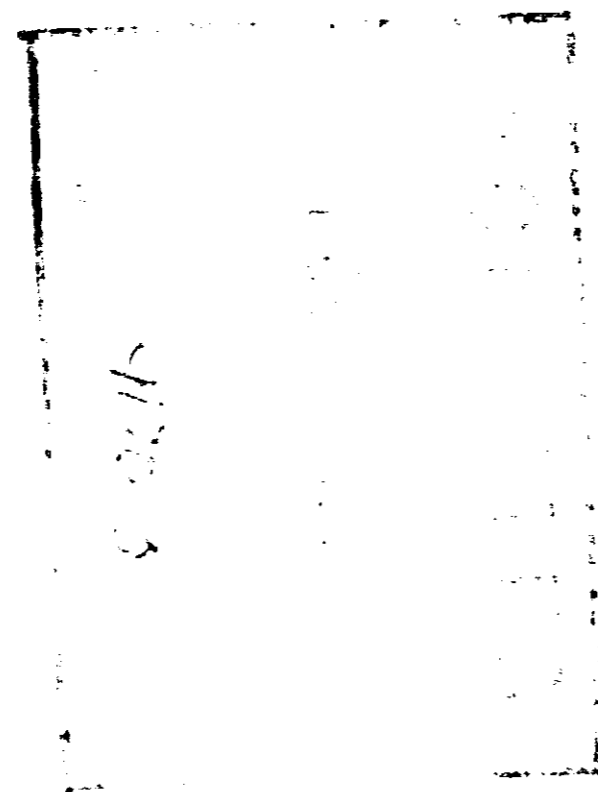
4170-B





**DISINFECTANT
CLEANER**
BROAD SPECTRUM - NON-SELECTIVE
ANTIBACTERIOSTATIC-ACTION

BY:
WETCO CORPORATION
CINCINNATI, OHIO



DIRECTIONS FOR CLEANING AND DISINFECTING

Use 2 oz. of Cleaner-Disinfectant to 1 gallon of Water (2 parts to 128 parts) Stronger solutions may be used for heavy soil. Rinse all food handling equipment with potable water.

SUGGESTED USES

Air Conditioners
Air Filters
Bakeries & Breweries
Barber Shops
Beauty Salons
Buses
Doctors Offices
Floors, All type

Food Processing Plants
Hospitals
Kitchens
Locker Rooms
Restaurants
Rest Rooms
Sanitariums
Schools

Shower Stalls
Swimming Pool Areas
Telephones
Trains
Undertakers
Vending Machines
Veterinary Hospitals

BROAD SPECTRUM DISINFECTION

Effective against the fungus causing athletes foot.

Non flammable, nonvolatile, odorless, noncorrosive, in use dilutions.

BETCO 88 DISINFECTANT may cause skin irritation or damage to the eyes. Harmful if swallowed. Avoid contact with skin and eyes. Do not take internally. In cases of contact, flush immediately with plenty of water. For eyes, get medical attention. Avoid contamination of food.

Dilute as directed.

Do not mix with other cleaners.

USDA Registration No. 4170-3