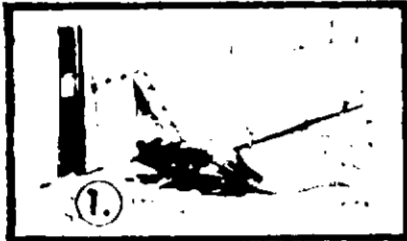
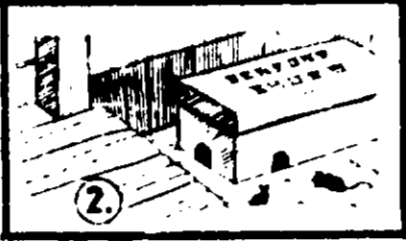


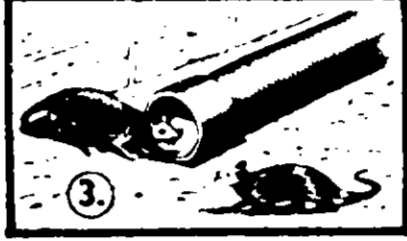
SUGGESTIONS FOR USING ROUGH ON RATS IN PLACES WHERE IT IS NECESSARY TO PROTECT BAIT, PETS, FOWLS AND ANIMALS.



1. Place bait under boards 4 feet long, about 8 inches wide.



2. For mice. Cut 1½" holes in a box and place over bait.



3. Place bait one foot inside pipe 4 feet long.

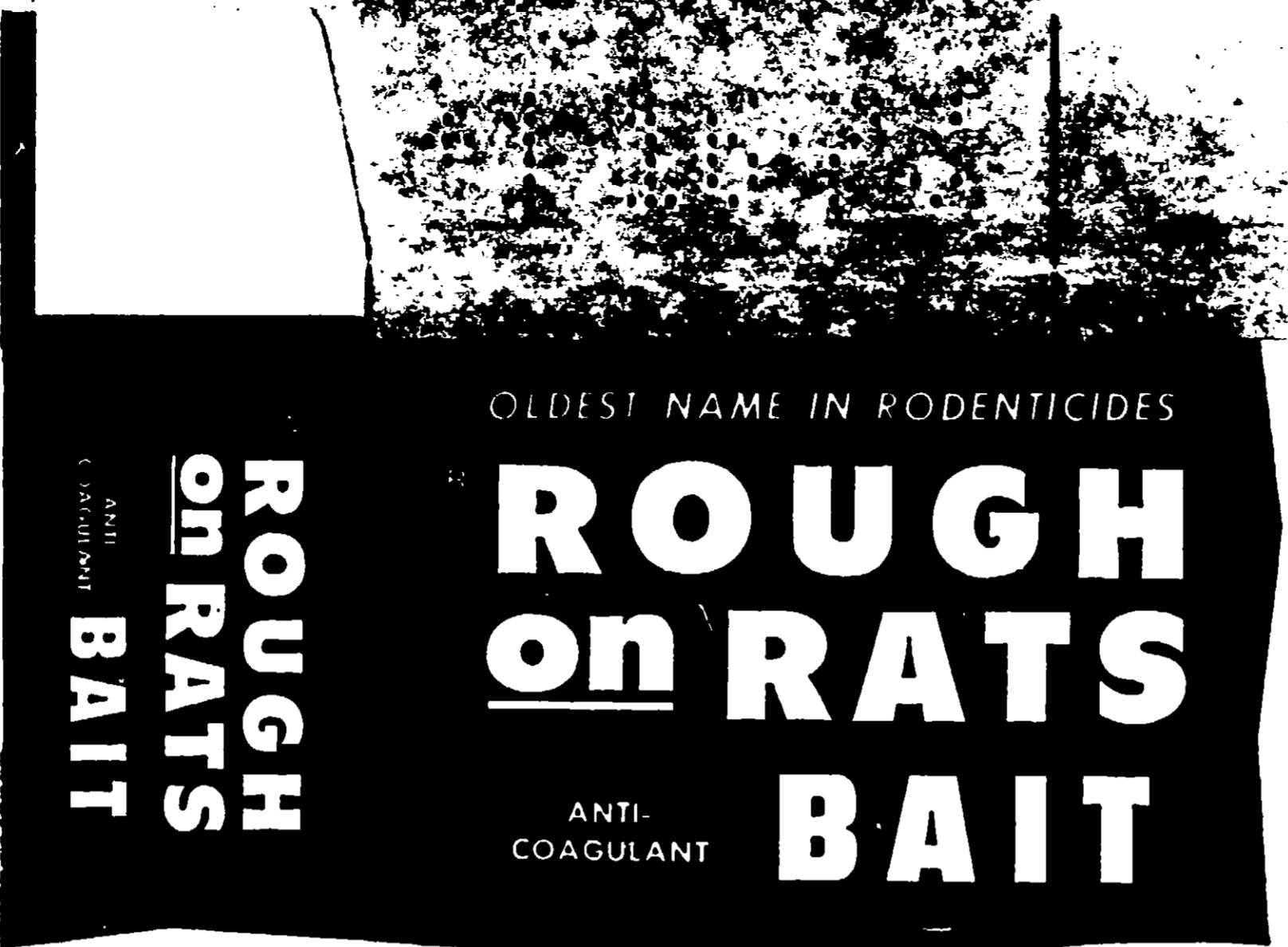
TO USE

PRICE

**ROUGH  
ON RATS**

**ROUGH  
ON RATS  
BAIT**

REGISTERED



OLDEST NAME IN RODENTICIDES

ANTI-COAGULANT  
**ROUGH  
on RATS  
BAIT**

**ROUGH  
on RATS  
BAIT**  
ANTI-COAGULANT

**READY TO USE**      **READY TO USE**

**KILLS MICE • KILLS RATS**

**CAUTION: KEEP OUT OF REACH OF CHILDREN. SEE OTHER CAUTIONS ON SIDE PANELS.**



**CONTAINS 8 OZS. NET AVDP. WT.**

Active Ingredients	3-(Alpha-Acetyl)furfuryl
4-Hydroxycoumarin*	0.025%
Inert Ingredients	99.975%

**READY TO USE**

**ROUGH  
on RATS  
ANTI-COAGULANT BAIT**