



**OFFICE OF CHEMICAL SAFETY AND POLLUTION PREVENTION**

WASHINGTON, D.C. 20460

July 05, 2024

**SENT BY EMAIL**

Tony Herber  
therber@srcconsultants.com  
W.M. BARR & COMPANY, INC.

Subject: Labeling Notification per Pesticide Registration Notice (PRN) 98-10 - Adding Graphics  
Product Name: Mold Armor E-Z House Wash  
Admin Number: 4091-19  
EPA Receipt Date: 01/10/2024  
Action Case Number: 00496289

Dear Tony Herber:

The U.S. Environmental Protection Agency is in receipt of your application for notification under Pesticide Registration Notice 98-10 for the above referenced product. The EPA has conducted a review of this request for its applicability under PRN 98-10 and finds that the action requested falls within the scope of PRN 98-10.

The labeling submitted with this application has been stamped "Notification" and will be placed in our records.

Should you wish to add/retain a reference to your company's website on your label, then please be aware that the website becomes labeling under the Federal Insecticide, Fungicide, and Rodenticide Act and is subject to review by the EPA. If the website is false or misleading, the product will be considered to be misbranded and sale or distribution of the product is unlawful under FIFRA section 12(a)(1)(E). 40 CFR § 156.10(a)(5) lists examples of statements the EPA may consider false or misleading. In addition, regardless of whether a website is referenced on your product's label, claims made on the website may not substantially differ from those claims approved through the registration process. Therefore, should the EPA find or if it is brought to our attention that a website contains statements or claims substantially differing from statements or claims made in connection with obtaining a FIFRA section 3 registration, the website will be referred to the EPA's Office of Enforcement and Compliance Assurance.

If you have questions, please contact Aline Heffernan via email at [heffernan.aline@epa.gov](mailto:heffernan.aline@epa.gov).

Sincerely,

Aline Heffernan, Senior Regulatory Advisor  
RMB1, AD  
Office of Pesticide Programs

Note to reviewer: All text in brackets [...] is optional and may or may not be included on a final label. All text in braces {...} is administrative and will not appear on a final label. Portions or all of the label may be bilingual.

## NOTIFICATION

### Mold Armor E-Z House Wash

4091-19

The applicant has certified that no changes, other than those reported to the Agency have been made to the labeling. The Agency acknowledges this notification by letter dated:

07/05/2024

[KILLS] [AND REMOVES] [MOLD] [AND MILDEW] [ON:]  
[BUILDING EXTERIORS] [INCLUDING WOOD, VINYL,] {and/or}  
[WOOD] [DECKS] [FENCES] [{insert others from Table 1}]

#### ACTIVE INGREDIENT:

Sodium hypochlorite ..... 5.25%

OTHER INGREDIENTS: ..... 94.75%

TOTAL: ..... 100.00%

KEEP OUT OF REACH OF CHILDREN

DANGER [AVISO]

See back [side] panel for additional precautionary statements and First Aid

NET CONTENTS [insert net contents on printed label] {Number may change prior to commercialization}

EPA Reg. No. 4091-19

EPA Est. No. {EPA Establishment number will appear on printed label}

[See lot code for actual Est. No.][See date code [on bottom] [of bottle] for actual Est. No.]

[Made] [Sold] [Distributed] [by] [for]: W.M. Barr and Company, Inc.

6750 Lenox Center Court, Suite 200

Memphis, TN 38115

[Copyright WM Barr & Co., Inc.]

[For] [questions][?] [or] [comments][?][please][contact][visit][call]:

[1-844-969-1373]

[www.moldarmor.com]

[Made in USA] [of US [and/or Global] materials]

Note to reviewer: All text in brackets [...] is optional and may or may not be included on a final label. All text in braces {...} is administrative and will not appear on a final label. Portions or all of the label may be bilingual.

## PRECAUTIONARY STATEMENTS

### Hazards to Humans and Domestic Animals

#### DANGER

Corrosive. Causes irreversible eye damage and skin burns. Do not get in eyes, on skin, or on clothing. Wear goggles or safety glasses and rubber gloves when handling this product. Wash thoroughly with soap and water after handling and before eating, drinking, chewing gum, using tobacco or using the toilet. Remove and wash contaminated clothing before reuse.

#### FIRST AID

**IF IN EYES:** Hold eye open and rinse slowly and gently with water for 15-20 minutes. Remove contact lenses, if present, after the first 5 minutes, then continue rinsing eye. Call a poison control center or doctor for treatment advice.

**IF ON SKIN OR CLOTHING:** Take off contaminated clothing. Rinse skin immediately with plenty of water for 15-20 minutes. Call a poison control center or doctor for treatment advice.

**IF SWALLOWED:** Call a poison control center or doctor immediately for treatment advice. Have person sip a glass of water if able to swallow. Do not induce vomiting unless told to do so by a poison control center or doctor. Do not give anything to an unconscious person.

Have the product container or label with you when calling a poison control center or doctor, or going for treatment. [National Poison Control Center: 1-800-222-1222]

### Physical and Chemical Hazards

This product contains an oxidizing agent. Do not use or mix with other chemicals. Prolonged contact of undiluted product with metal may cause pitting or discoloration.

## ENVIRONMENTAL HAZARDS

This product is toxic to fish and aquatic organisms. To protect the environment, do not allow pesticide to enter or run off into storm drains, ditches, or surface waters.

## STORAGE AND DISPOSAL

Store with lid closed [or lever/switch in off position] in areas inaccessible to children, in a cool dry area, away from direct sunlight and heat to avoid deterioration.

{for sprayer intended to be refilled by the consumer}

Container Handling: Do not reuse or refill this container except as described in the directions for use. Refill only with this product [-or- product name]. Offer empty container for recycling or discard in trash.

{for container (5 gallons or less) not intended to be refilled by the consumer}

Container Handling: Nonrefillable container. Do not reuse or refill this container. Offer empty container for recycling or discard in trash. Do not reuse this bottle for any other purpose.

{Lot code and/or expiration date may appear on either the container or label}

### {Optional Container/Applicator Related Statements and Graphics:}

{For hose end labels, including optional graphic:}

Unique Sprayer Deflector Attachment

Deflector slides into nozzle



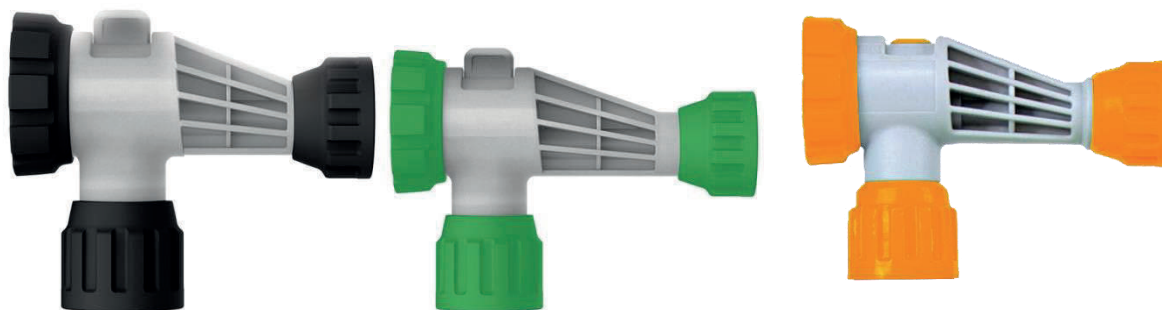
Detach deflector to create a direct spray and reach 2<sup>nd</sup> story

Attach deflector to create wide spray pattern and increase coverage

Note to reviewer: All text in brackets [...] is optional and may or may not be included on a final label. All text in braces {...} is administrative and will not appear on a final label. Portions or all of the label may be bilingual.

[New!] View Strip [Empty INDICATOR] [Check window to see when empty]

New & Improved Spray Nozzle



**DIRECTIONS FOR USE:** It is a violation of Federal Law to use this product in a manner inconsistent with its labeling.

**Important:** Carefully read all directions, notes and conditions prior to use. Only use this product as directed on the label. For outdoor use only. Oxidation from sun and elements [mold], [mildew] [or] [algae] can cause permanent discoloration on outside surfaces. Test on an inconspicuous area before using. Wear eye protection and rubber gloves during use. Formula may stain clothes and shoes – dress appropriately.

[Helpful tips:] [Do not use on cedar or redwood that is less than 2 years old.] [Avoid contact with metal surfaces, clothing, carpet, fabrics, floor coverings or vegetation.] [Do not use in windy conditions.] [Use of this product may loosen fibers from surfaces environmentally damaged by sun, wind and rain]. [Particularly stubborn stains may require a second application.] [Not for use on deteriorated surfaces (old wood, paint, etc.) unless you intend to

Note to reviewer: All text in brackets [...] is optional and may or may not be included on a final label. All text in braces {...} is administrative and will not appear on a final label. Portions or all of the label may be bilingual.

refinish surface.][Not recommended for use on [automobiles] [-or- cars -or- vehicles] [, boats] [, RV's] [, alloy wheels] [, unpainted metal].]

**{For Hose End containers/applicators:}**

**{Option 1}**

To kill [and remove] mold [and mildew]:

1. Attach garden hose to nozzle with throttle pushed back closest to the hose side of the sprayer. 2. Turn on water to hose. 3. With slider in RINSE position, push throttle forward and spray surrounding plants with water. 4. Turn slider to CLEAN and coat the area to be cleaned, working from the ground upward. Allow product to work for 10 minutes. 5. Turn slider to RINSE and rinse area well with water. 6. Move to a new area and repeat. If staining persists a second coat may be required. 7. Spray surrounding plants with water after use. 8. Push throttle back toward hose side of sprayer and turn off completely for storage.

**{Option 2}**

1. Spray surrounding plants with water. 2. Attach garden hose to nozzle with valve in OFF position. Turn on water to hose. 3. Turn nozzle to CLEAN and coat the area, working from the ground upward. Allow to work for 10 minutes. 4. Turn nozzle to RINSE and rinse area well with water. If staining persists a second coat may be required. 5. Spray surrounding plants with water after use. 6. Turn to OFF for storage.

**{Option 3}**

Connect sprayer to garden hose with tab on top of sprayer in OFF position. Turn on water to hose. Select shower setting spray pattern. Turn tab to rinse and spray surrounding plants with water. Select spray pattern that works best with area you are cleaning. Turn tab to CLEAN and coat the area. Allow to work for 10 minutes. Move to new area and repeat. To rinse select spray pattern and turn tab to RINSE and rinse area well with water. Apply a second coat if required. When finished select shower pattern, turn tab to RINSE and spray surrounding plants with water. Turn to OFF for storage.

**{Refilling Directions for Use with Option 1, 2, or 3:}**

To refill [hose-end] [sprayer]: Remove hose end sprayer. Pour in [product] [from] [refill] and replace hose end [sprayer].

**{For Gallon E-Z House Wash (not Hose End):}**

Surface Preparation: Use formula at full strength for tough stains or dilute with 3 parts water, one part formula for typical stains and dirt. Apply with a garden sprayer, roller or sponge. Apply full strength with a garden sprayer. Do not use a high power pressure washer to apply.

Note to reviewer: All text in brackets [...] is optional and may or may not be included on a final label. All text in braces {...} is administrative and will not appear on a final label. Portions or all of the label may be bilingual.

To kill [and remove] mold [and mildew]: 1. Spray surrounding plants with water before and after use. 2. Start from the bottom and work upwards. Wait 10 minutes. 3. Rinse well with water. Heavy stains and textured surfaces may require light scrubbing and a second application.

To clean [and/or remove mold and mildew stains]: 1. Spray surrounding plants with water before and after use. 2. Start from the bottom and work upwards. [Wait [let stand] 5-10 minutes.] 3. Rinse well with water. Heavy stains and textured surfaces may require light scrubbing and a second application.

**{For House or Deck/Fence or Multi-Purpose Pressure Washer Version:}**

Follow pressure washer manufacturer's instructions for application & use of cleaning solutions.

To kill [and remove] mold [and mildew]:

1. Spray surrounding plants with water using a garden hose. 2. Add product to pressure washer detergent tank. Ensure tank is clean before filling with product. 3. Wash surface with cleaner using LOW pressure spray nozzle. Coat the area, working from the ground upward. 4. Allow to work for 10 minutes. 5. Rinse surface with water using HIGH pressure nozzle. 6. Spray surrounding plants with water [using a garden hose] after use. 7. Rinse detergent tank with water prior to storage.

**{For Gallon E-Z Deck & Fence or Concrete Driveway and Sidewalk Cleaner Directions (not Hose End) :}**

[This product will not remove pigmented wood stains or [sealers].]

To kill [and remove] mold [and mildew]: Apply full strength with a plastic garden sprayer. Wait [let stand] 10 minutes. Thoroughly rinse off surface and surrounding area.

To clean [and/or remove mold and mildew stains]: Apply full strength with a plastic garden sprayer. [Wait [let stand] 5-10 minutes]. Thoroughly rinse off surface and surrounding area.

**{Optional Marketing Claims}**

- Kills [exterior] mold [and] [mildew] [down to the roots]
- Penetrates into [crevices][and][uneven surfaces] to reach mold and mildew[,] [killing down to the roots]
- [Cleans][Covers] up to XX {insert number} square feet [SQ FT] [[with][on] wide spray pattern]
- Mold Remover
- Stop Mold
- Removes [exterior] mold [& mildew] [stains], [&] [algae stains] [dirt,] [grime]
- Removes Mold, Mildew & Algae Stains
- Removes [stubborn] [tough] dirt [and] [grime]
- [Easily] Reaches the second story
- No need for a [clumsy] ladder
- No ladder required [!]
- [Powerful] sprayer [blasts] [cleans] away mold, [mildew], [algae stains] [dirt] [stains] [and debris]
- [Bleach] [cleaning] formula [cleans] away mold, [mildew], [algae stains], [dirt] [stains] [and debris]
- [Cleans with] No scrubbing
- Spray On. [Rinse Off] Wait [5-] 10 Minutes. [Wash][Rinse] Off
- Works in [5-10] [10] Minutes. [Guaranteed\*]

Note to reviewer: All text in brackets [...] is optional and may or may not be included on a final label. All text in braces {...} is administrative and will not appear on a final label. Portions or all of the label may be bilingual.

- Cleans [Use on] vinyl [siding], [brick,] [stucco,] [aluminum,] [[sealed] concrete,] [painted wood,] [trim,] [PVC,] [plastic,] [siding,] [[sealed] masonry] [gutters] [roofs] [driveways] [restored wood,] [resurfaced wood [finishes] [playground equipment] [patio furniture].
- Cleans {insert use site(s)/surface(s) from Table 1}
- Great for cleaning outdoor surfaces such as [:] {insert use site/surface from Table 1}
- Great for use on [:] {insert use site/surface from Table 1}
- Bleach-based [formula]
- Cleans and brightens [in minutes]
- Clings to exterior surfaces for an even better clean<sup>1</sup>
- Clings to surfaces [for a longer-lasting clean<sup>1</sup>]
- Clings to surfaces [for a long-lasting clean]
- Microban Foaming Technology creates a longer-lasting clean<sup>1</sup>
- Microban Foaming Technology creates a long-lasting clean<sup>1</sup>
- Foaming clean lifts dirt and debris [for a better clean<sup>1</sup>]
- Microban Foaming Technology captures more dirt and debris [for a longer-lasting clean<sup>1</sup>]
- Microban Foaming Technology lifts dirt and debris away [for a longer-lasting clean<sup>1</sup>]
- Microban Foaming Technology lifts dirt and debris away [for a long-lasting clean<sup>1</sup>][[siding] [decks & fences] will look brighter and new]
- Rapid [removal][cleaning] of stains from mold, mildew, and algae [for a deep[,] long-lasting clean<sup>1</sup>]
- Cleans dirt and grime [for a deep[,] long-lasting clean]
- Dual surfactant foaming action clings to and lifts away stubborn dirt & grime
- Dual surfactant foaming action clings to and lifts away slippery green and grimy black stains for a better clean<sup>1</sup>
- Dual surfactant [cleaner] [blend][formula] generates more foam<sup>1</sup> [to remove stubborn, visible grime]
- Dual surfactant [cleaner][blend][formula] removes stubborn, visible grime
- [Foaming action [attracts and traps][lifts] soil and grime[,] [cleaning deep]
- Cleans deep [into [crevices][,][nooks][and][crannies]] [by] removing micro-particles of soil for a longer-lasting clean<sup>1</sup>
- Targets a variety of [dirt][soils] and stains [as it works into [the] crevices of outdoor surfaces]
- Dual surfactant [cleaner][formula][blend] attacks soils and stains to achieve an optimal clean
- Penetrates into [crevices] [and][uneven surfaces] [for a [deep][lasting][thorough] clean]
- Fast-acting clean
- Won't harm [plants] [grass] [trees] [shrubs] when used as directed
- It's like pressure cleaning using your garden hose.
- Stop[s] Mold [Stains]
- [Power[s]] [Blasts] away [dirt], [grime], [and] [mold] [in minutes]
- House Cleaner and Mold [and Mildew] Killer
- Kills mold [and mildew]
- Mold [and Mildew] Concentrate
- Visible results in minutes
- Use as a refill [for Mold Armor E-Z Deck, Fence & Patio Wash hose end products] [Mold Armor E-Z House Wash hose end products]
- 100% dedicated to fighting mold [and mildew] [and algae stains]
- Renews the look of [painted/sealed] wood [decks] [fences]
- Restores the [natural] [look] of weathered, discolored wood [within minutes]

Note to reviewer: All text in brackets [...] is optional and may or may not be included on a final label. All text in braces {...} is administrative and will not appear on a final label. Portions or all of the label may be bilingual.

- Cleans discolored weathered wood siding, fences [and] [&] decks.
- [Works on] [Great for] composite decks
- Powerful cleaning action to [remove] [penetrate] [and lift] [dirt] mold [and mildew] stains
- [And,] it's guaranteed effective.
- Easy to use
- Ready-to-use
- Spray on. Rinse off. No Scrubbing.
- Say good-bye to [stubborn] mold and mildew
- Cleans & Brightens [decks & fences], [[painted/sealed] wood,] [composite,] [PVC,] [restored] [and] [resurfaced] [finishes.] {and/or} insert use site(s)/surface(s) from Table 1}
- Makes wood look new again in minutes
- Great for composite [decks] [surfaces]
- Multi-purpose [formula][product][cleaner] great for [siding],[brick],[patios],[fencing],[fences],[decks], {and/or} {insert use site/surface from Table 1}
- Use as a refill for {insert size} [fl. Oz.] {insert alternate brand name} hose end sprayer
- [Great for] [Use for] prepaint mold [mildew] removal
- Use for surface preparation prior to painting. Improves the long-term appearance and performance of your paint.
- Kills [cleans] [removes] mold [and mildew] on [outdoor] patio furniture
- From the makers of Home Armor [Products]
- No mixing
- See it work!
- See the clean instantly!
- See it clean on contact
- Cleans on contact
- Cleaning begins on contactVisible results in minutes
- 2X stronger than Mold Armor E-Z House Wash hose end
- E-Z [Multi-Purpose] [Mold Kill] [House] [Siding] [Deck] [Fence] [Concrete] [Driveway] [Patio] [Patio furniture] [Roofs] Pressure Washer Concentrate
- Mold Armor formula works better than pressure washer by itself
- Improves [enhances] pressure washer performance [to kill mold and [&] mildew]
- Penetrates & dissolves tough stains
- Removes [dirt], [oil], [grease], [algae stains] [mold] and [mildew] [stains]
- Powers away [mold], [mildew], [algae stains], [dirt] and [grime].
- Foaming [bleach] for extra [added] clinging & cleaning
- [Avoid [spraying][on] windows and DO NOT allow [product] to [completely] dry on glass. If contact occurs, [thoroughly] rinse [product][off] glass with water.] -or- [Do not allow to dry on glass or other surfaces. Avoid windows. If contact occurs, rinse with water.]
- Eliminates odor[s]



**{Optional Cross-marketing/Brand Claims}**

- Mold Armor products remove mold [and mildew], [indoors and outdoors].
- Mold Armor [products] has [have] powerful cleaning action to remove mold and mildew, [indoors and outdoors]
- Powerful mold removal
- {For Deck Wash SKUs} More concentrated application for wood [surfaces]

**{Optional Packaging Related Statements/Claims}**

{Claims of “new” only to be used for first 6 months of distribution}

- Bonus [Pack] [Size] [25%][30%][50%] More Free
- X% [free][Bonus][More]
- Extra [Value][pack][size]
- Trial [size][pack]
- Travel [size][pack]
- [Also] available in 1 [gal] [Gallon] [Bonus] 1.25 [gal] 2.5 [gal] [Gallon] and 5 [Gallon] [gal]
- [Also] available in 16 [FL. OZ] [ounces] 22 [FL. OZ] [ounces] 32 [FL. OZ] [ounces] 40 [FL. OZ] [ounces] [Bonus] 56 [FL. OZ] [ounces] 70 [FL. OZ] [Fluid Ounces] [Bonus]
- [BOGO] Buy X Get X Free
- [New] Hose End Sprayer Design
- [New] Empty Indicator. Check window to see [when formula is used up] [when empty]

**{Alternate Brand Names}**

Mold Armor E-Z House Wash Hose End  
Mold Armor E-Z House Wash Gallon  
Mold Armor E-Z House Wash Gallon Refill  
Mold Armor E-Z Deck, Fence & Patio Wash Hose End  
Mold Armor E-Z Deck, Fence & Patio Gallon  
Mold Armor E-Z Deck, Fence & Patio Gallon Refill

**{Optional Claims}**

Contains no poisonous acids, petroleum distillates or phosphates.  
Contains anti-corrosive [additive] to protect pressure washer [parts]  
Will not harm pressure washer equipment

\*Guarantee: When used as directed this product will remove standard mold and mildew in 10 minutes. Heavy mold stains may require second application or scrubbing. If you are not satisfied please return the [container] [receipt] within 60 days of purchase for a refund. [less S&H]

{-or-}

Note to reviewer: All text in brackets [...] is optional and may or may not be included on a final label. All text in braces {...} is administrative and will not appear on a final label. Portions or all of the label may be bilingual.

\*When used as directed this product kills mold on [sealed] [or painted] [wood] [brick] [and] [concrete]. Heavy mold stains may require second application or scrubbing. If you are not satisfied please return the [container] [receipt] within 60 days of purchase for a refund. [less S&H]

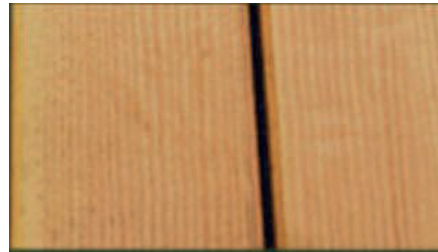
Table 1:

{Optional use sites/surfaces in Table 1 and optional images on Page 9-11 may be used anywhere on the container label.}

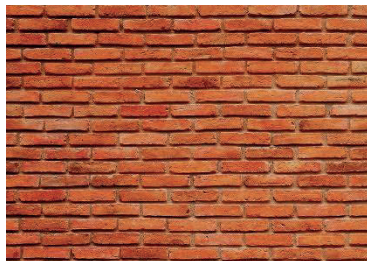
Exterior Surfaces	Trim
Building exteriors	Restored surfaces
[Painted/sealed/stained] Wood	Resurfaced finishes
Vinyl [siding]	Composite [Decks] [decking] [roofs]
Siding	Outdoor Furniture
Aluminum	Patio
Decks	Plastic
Fences	Roofs/Roof Shingles
Swing sets	Patio Furniture
Playground equipment	Awnings
[Painted/sealed] Brick	Umbrellas
Stucco	[Painted/sealed] Cement [Concrete] [Block]
[Painted/sealed/stained] Concrete	[Asphalt] [wood] [and] [composition roofs]
Painted or Stained Wood	Non-porous surfaces
Painted or Stained Decks	Painted or Stained Fences
Gutter[s] [exteriors]	Sealed [asphalt][concrete] Driveways
Roofs	Glazed Tile
Fiberglass	Sidewalks
Stained Surfaces	Masonry
Lanais	Plastic
Flowerpots	House[s]
Greenhouses	Garden Decor
Mailboxes	Log Cabins
Pavers	Planter Boxes
Porches	Tarps
Tombstones	Stone



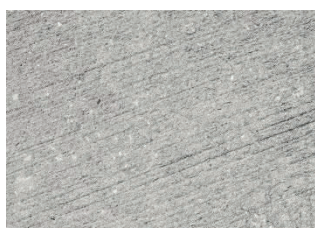
Note to reviewer: All text in brackets [...] is optional and may or may not be included on a final label. All text in braces {...} is administrative and will not appear on a final label. Portions or all of the label may be bilingual.



[aluminum]



[sealed brick]



[sealed concrete]

Note to reviewer: All text in brackets [...] is optional and may or may not be included on a final label. All text in braces {...} is administrative and will not appear on a final label. Portions or all of the label may be bilingual.



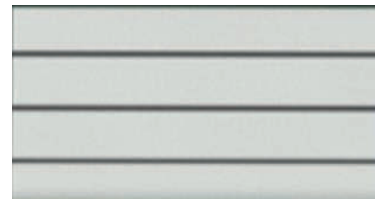
[stucco]



[trim]



[vinyl siding]



[fences]

Note to reviewer: All text in brackets [...] is optional and may or may not be included on a final label. All text in braces {...} is administrative and will not appear on a final label. Portions or all of the label may be bilingual.



{Optional Graphics for products that contain Microban Foaming Technology}

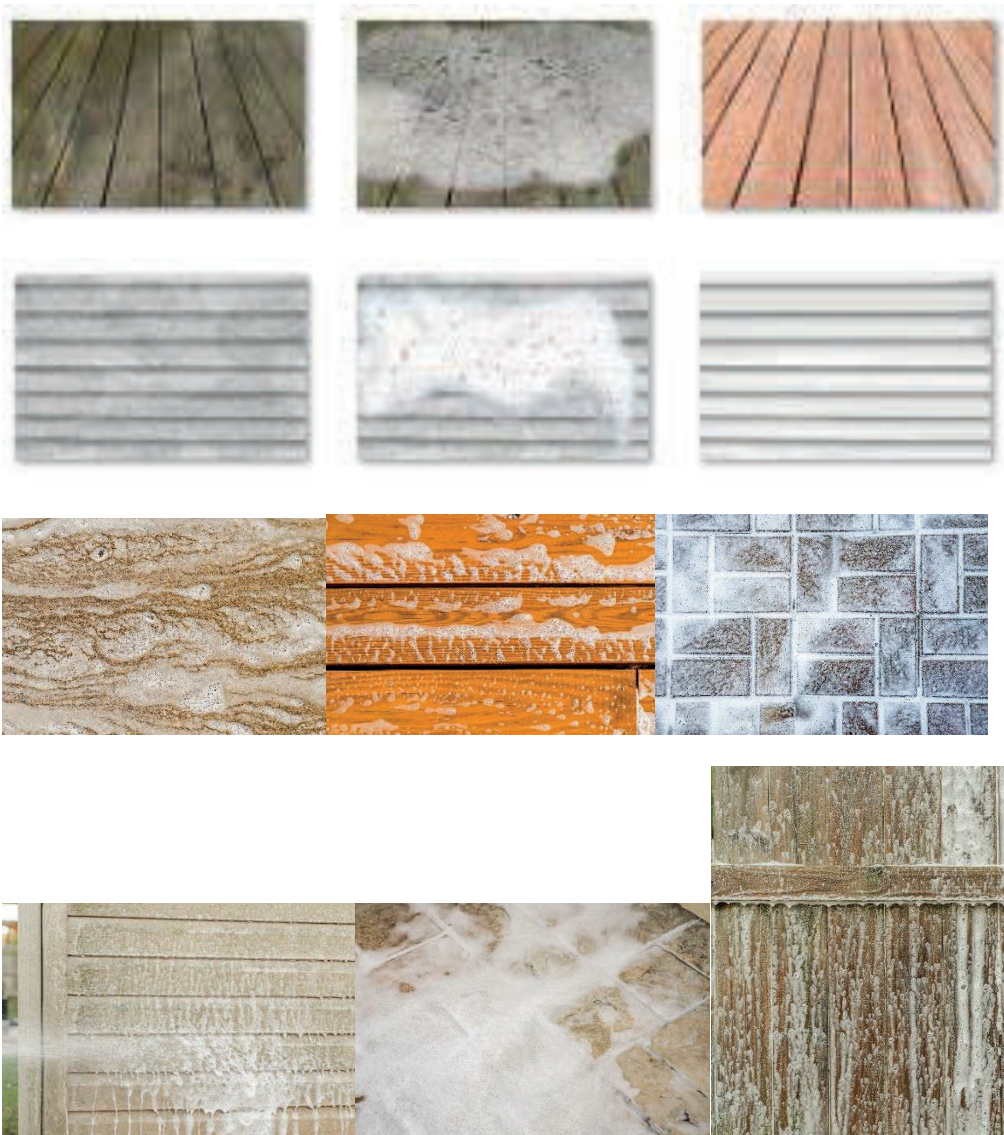


{The blue ring around the Microban branded badge represents a location where one or two marketing claims from pages 5-8 may be placed}

[Follow directions on label to remove mold, mildew, dirt & debris]



Note to reviewer: All text in brackets [...] is optional and may or may not be included on a final label. All text in braces {...} is administrative and will not appear on a final label. Portions or all of the label may be bilingual.

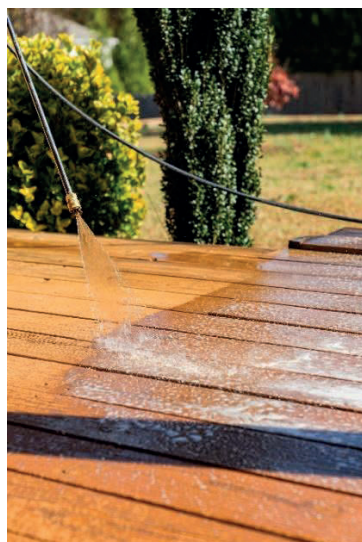


Note to reviewer: All text in brackets [...] is optional and may or may not be included on a final label. All text in braces {...} is administrative and will not appear on a final label. Portions or all of the label may be bilingual.



Note to reviewer: All text in brackets [...] is optional and may or may not be included on a final label. All text in braces {...} is administrative and will not appear on a final label. Portions or all of the label may be bilingual.

{Optional graphics for pressure washer use}



Note to reviewer: All text in brackets [...] is optional and may or may not be included on a final label. All text in braces {...} is administrative and will not appear on a final label. Portions or all of the label may be bilingual.

---

<sup>1</sup>Compared to -or- versus previous {insert Mold Armor ABN} -or- [cleaning with soap and water alone] -or- [scrubbing alone]