

pm 21

4091-8

Wood Preserver

Clear exterior wood preservative

Protects against rot, decay,
warping and termite attack

Paintable • Water repellent

This product exceeds MILSpec TT-W-572 For Water Repellency

Protects Against:



Rot & decay



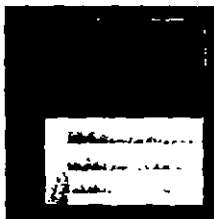
Attacks by termites



Warping & swelling

Use before painting on new wood

Use on:



Siding



Fence



Deck

Wood shingles • Outdoor wood furniture
Structural lumber

* Thompson's Water Seal is a registered trademark of Thompson & Formby Inc.

Consumer Guarantee

W. M. Barr warrants this product to be suitable for the purpose for which intended. Because W. M. Barr has no control over workmanship, conditions, or other variables during application, liability is limited to replacement of the product or refund of the purchase price. Send details and proof of purchase to Seal-Treat Guarantee, P.O. Box 1879, Memphis, TN 38101.

OPEN SLOWLY TO RELIEVE PRESSURE

ATTENTION

When empty, may contain explosive vapors. do not cut, puncture or weld on or near this container.



Product Number
ST-79

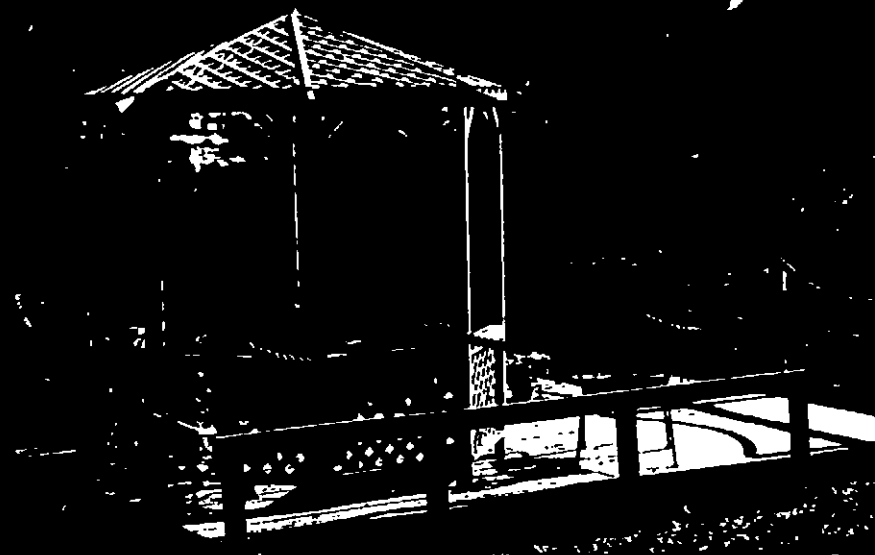


PAINT

BEST COPY AVAILABLE

Wood Preserver

Clear exterior wood preservative
Protects against rot, decay, warping and
termite attack with one coat coverage



Superior to Thompson's® Water Seal¹ in preserving
your wood²

**KEEP OUT OF REACH
OF CHILDREN**

WARNING! Read other precautionary
statements on back panel. **COMBUSTIBLE.**

NET 5 GALLONS

INGREDIENTS

Active Ingredient 2, 4, 6-Trinitrophenol, 100%

Inert Ingredients

Water, 100%

PRECAUTIONS

AVOID SKIN CONTACT. Wash promptly, and then
rinse thoroughly with water. If product gets in eyes, flush immediately with copious amounts of water for 15 to 20 minutes. Get medical attention if irritation persists. **DO NOT SWALLOW.** Get a physician or Poison Control Center if you or child vomit or induce vomiting by touching back of throat with finger or give anything by mouth to an unconscious person.

EPA Reg. No. 1001-B
EPA Est. No. 4001-TN-3

E PRESSURE

Do not
contain
do not
weld on
tainer.



7930 e

BEST COPY AVAILABLE

PRECAUTIONARY STATEMENTS HAZARDS TO HUMANS AND DOMESTIC ANIMALS

WARNING: Causes eye damage and skin irritation. Do not get in eyes, on skin or on clothing. Wear goggles or face shield and rubber gloves when handling. Harmful if swallowed or absorbed through skin. Avoid breathing vapors or spray mist. This product may cause skin sensitization. Use only in a well ventilated area.
DO NOT USE this product in confined areas where vapors may accumulate and concentrate or where vapors may seep into structures that may be inhabited by human or animal life.

NOTE TO PHYSICIAN: Probable mucosal damage may contraindicate the use of gastric lavage. Measures against circulatory shock, respiratory depression, and convulsion may be needed.

ENVIRONMENTAL HAZARDS: This pesticide is toxic to fish. Do not apply directly to water. Permits may be required for discharges containing this pesticide into lakes, streams, ponds, or public water. For guidance, contact the regional office of the Environmental Protection Agency.

PHYSICAL AND CHEMICAL HAZARDS: Do not use or store near heat or open flame. 6150394
COMBUSTIBLE.

KEEP OUT OF REACH OF CHILDREN

WOOD PRESERVER

Wood Preserver is a clear, water-repellent wood preservative for use on bare exterior wood before paint or for protection of unfinished wood while allowing it to weather naturally. Wood Preserver contains a fungistat that penetrates deep into the wood fibers to guard against rot, decay and mildew. It also inhibits attack by termites. The special water repellents help seal in moisture to retard warping, swelling and shrinking wood.

Use above grade on exterior unfinished wood, such as millwork, fences, siding, decks, shingles, outdoor furniture and structural lumber. For below grade, use Below Ground wood preservative, a 20% solution of copper naphthenate, for lasting protection.

DIRECTIONS FOR USE:

It is a violation of Federal law to use this product in a manner inconsistent with its label.
Due to the combustible nature of solvents in this product care should be taken not to expose freshly treated article or surface to fire or flame.

SURFACE PENETRATION: All cuttings should be completed before application. Wood must be clean, dry and free of bark and any previous finish. If mildew is present, clean the area with Seal-Treat Deck Magic or a solution of 1 part household bleach and 3 parts water (allow to stand 5-10 minutes) and follow with a water rinse. Then allow to dry thoroughly.

APPLICATION: Mix thoroughly before use. Do not thin. Apply by brushing or spraying of multiple coats. The most effective treatment is obtained by extended soaking where deep penetration and high absorption are obtained. A soaking period of 5 minutes per inch of thickness is recommended.
Use extra care to saturate joints and exposed wood end grain for more effective protection.

PAINTING: Apply only one coat before painting. Allow to dry 24 hours or more before painting with oil-based paints, oil-based stain or oil-based primer for latex paint. Allow to weather 6-12 months if latex paint is to be applied directly over Wood Preserver.

COVERAGE: Up to 250 sq. ft. per gallon average depending on condition and species of wood

CLEANUP: Clean equipment promptly with paint thinner, mineral spirits or turpentine.

NOTE:

PLANT LIFE: Avoid contact with grass, trees or shrubs during application as damage can occur. Do not use this product in any confined area where the vapors may concentrate and cause injury to plant or animal life. After thoroughly dry, treated wood is non-injurious to surrounding plant life.

This product is not intended to treat wood used for food, feed, potable water, living plants, livestock and dairy animal contact surfaces.

IMPORTANT: Treated wood will weather naturally and produce graying and contrasting tones depending upon its exposure. The results of weathering will vary with different exposures and different natural extractives in wood which can produce uneven tones

STORAGE AND DISPOSAL

PROHIBITIONS: Do not contaminate water, food or feed by storage or disposal. Open dumping is prohibited.

STORAGE: Store in a secure, well-ventilated area protected from extreme temperatures. Do not transfer to unmarked containers. Keep container closed when not in use.

PESTICIDE DISPOSAL: Pesticide wastes are acutely hazardous. Improper disposal of excess pesticide, spray mixture, or rinsate is a violation of Federal Law. If these wastes cannot be disposed of by use according to label instructions, contact your State Pesticide or Environmental Control Agency, or the Hazardous Waste representative at the nearest EPA Regional Office for guidance.

CONTAINER DISPOSAL: Triple rinse (or equivalent). Then offer for recycling or reconditioning, or puncture and dispose of in a sanitary landfill, or by other procedures approved by State and Local authorities.

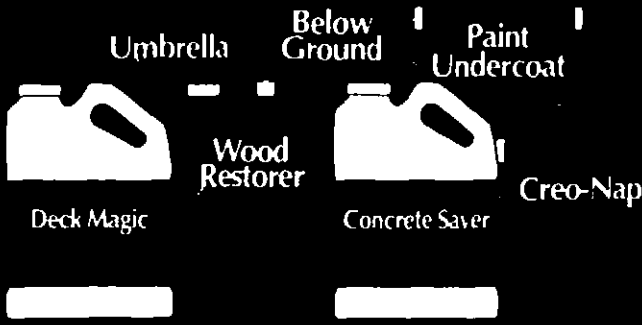
GENERAL: Consult Federal, State or Local authorities for approved alternative procedures.

6150-394

PHOTOCHEMICALLY REACTIVE
MAX VOC - 780 grams per liter
MAX Vapor Pressure of the VOC - 2mm Hg at 20 C
Sold by
1961 W.M. BAHR & CO. INC. MEMPHIS TN 38101 1879

BEST COPY AVAILABLE

Use Other Great Seal-Treat Products



Treat your biggest investment with a prescription for protection. Seal-Treat will keep you covered all around your home.

Consumer Guarantee

W. M. Barr warrants this product to be suitable for the purpose for which intended. Because W. M. Barr has no control over workmanship, conditions, or other variables during application, liability is limited to replacement of the product or refund of the purchase price. Send details and proof of purchase to Seal-Treat Guarantee, P.O. Box 1879, Memphis, TN 38101.



Product Number
ST-79



Superior to T

KEEP OUT OF REACH OF CHILDREN

WARNING! Read other precautionary statements on back panel. **COM**
ONE GALLON 3.785 LITERS

W. M. BARR
MEMPHIS, TENNESSEE

BEST COPY AVAILABLE

Wood Preserver

Clear exterior wood preservative
Protects against rot, decay, warping and
termite attack with one coat coverage

Wood Preserver

- Clear exterior wood preservative
- Protects against rot, decay, warping and termite attack
- Paintable • Water repellent

Protects Against:



Rot & decay



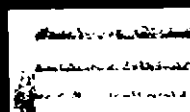
Attacks by termites



Warping & swelling

Use before painting on new wood

Use on:

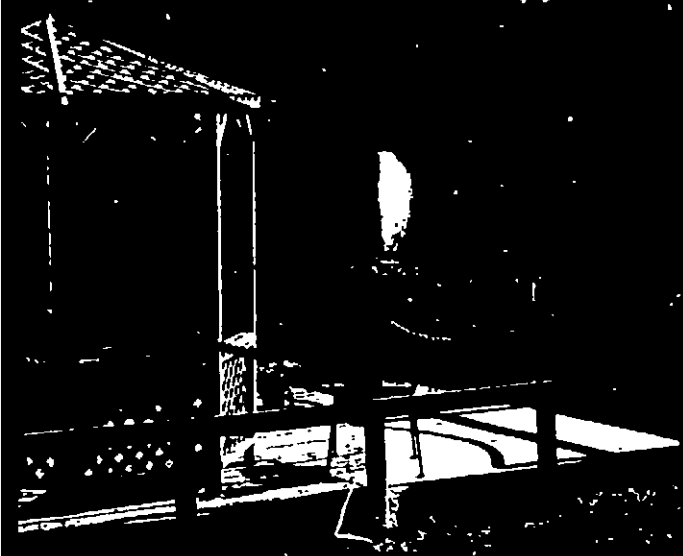


Siding

Fence

Deck

- Wood shingles
- Outdoor wood furniture
- Structural lumber



Tompson's® Water Seal® in preserving your wood

INGREDIENTS

Active Ingredient 2

Inert Ingredients

NON-FLAMMABLE

PRECAUTIONARY STATEMENTS HAZARDS TO HUMANS AND DOMESTIC ANIMALS

WARNING: Causes eye damage and skin irritation. Do not get in eyes, on skin or on clothing. Wear goggles or face shield and rubber gloves when handling. Harmful if swallowed or absorbed through skin. Avoid breathing vapors or spray mist. This product may cause skin sensitization. Use only in a well ventilated area.
DO NOT USE this product in confined areas where vapors may accumulate and concentrate or where vapors may seep into structures that may be inhabited by human or animal life.

NOTE TO PHYSICIAN: Probable mucosal damage may contraindicate the use of gastric lavage. Measures against circulatory shock, respiratory depression, and convulsion may be needed.

ENVIRONMENTAL HAZARDS: This pesticide is toxic to fish. Do not apply directly to water. Permits may be required for discharges containing this pesticide into lakes, streams, ponds, or public water. For guidance, contact the regional office of the Environmental Protection Agency.

PHYSICAL AND CHEMICAL HAZARDS: Do not use or store near heat or open flame.
COMBUSTIBLE.

6150394

KEEP OUT OF REACH OF CHILDREN

WOOD PRESERVER

Wood Preserver is a clear, water-repellent wood preservative for use on bare exterior wood before paint or for protection of unfinished wood while allowing it to weather naturally. Wood Preserver contains a fungistat that penetrates deep into the wood fibers to guard against rot, decay and mildew. It also inhibits attack by termites. The special water repellents help seal out moisture to retard warping, swelling and shrinking wood.

Use above grade on exterior unfinished wood, such as millwork, fences, siding, decks, shingles, outdoor furniture and structural lumber. For below grade, use Below Ground wood preservative, a 20% solution of copper naphthenate, for lasting protection.

DIRECTIONS FOR USE:

It is a violation of Federal law to use this product in a manner inconsistent with its label.

Due to the combustible nature of solvents in this product care should be taken not to expose freshly treated article or surface to fire or flame.

SURFACE PENETRATION: All cuttings should be completed before application. Wood must be clean, dry and free of bark and any previous finish. If mildew is present, clean the area with Seal-Treat Deck Magic or a solution of 1 part household bleach and 3 parts water (allow to stand 5-10 minutes) and follow with a water rinse. Then allow to dry thoroughly.

APPLICATION: Mix thoroughly before use. Do not thin. Apply by brushing or spraying of multiple coats. The most effective treatment is obtained by extended soaking where deep penetration and high absorption are obtained. A soaking period of 5 minutes per inch of thickness is recommended.

Use extra care to saturate joints and exposed wood end grain for more effective protection.

PAINTING: Apply only one coat before painting. Allow to dry 24 hours or more before painting with oil-based paints, oil-based stain or oil-based primer for latex paint. Allow to weather 6-12 months if latex paint is to be applied directly over Wood Preserver.

COVERAGE: Up to 250 sq. ft. per gallon average depending on condition and species of wood.

CLEANUP: Clean equipment promptly with paint thinner, mineral spirits or turpentine.

NOTE:

PLANT LIFE: Avoid contact with grass, trees or shrubs during application as damage can occur. Do not use this product in any confined area where the vapors may concentrate and cause injury to plant or animal life. After thoroughly dry, treated wood is non-injurious to surrounding plant life.

This product is not intended to treat wood used for food, feed, potable water, living plants, livestock and dairy animal contact surfaces.

IMPORTANT: Treated wood will weather naturally and produce graying and contrasting tones depending upon its exposure. The results of weathering will vary with different exposures and different natural extractives in wood which can produce uneven tones.

STORAGE AND DISPOSAL

PROHIBITIONS: Do not contaminate water, food or feed by storage or disposal. Open dumping is prohibited.

STORAGE: Store in a secure, well-ventilated area protected from extreme temperatures. Do not transfer to unmarked containers. Keep container closed when not in use.

PESTICIDE DISPOSAL: Pesticide wastes are acutely hazardous. Improper disposal of excess pesticide, spray mixture, or rinsate is a violation of Federal Law. If these wastes cannot be disposed of by use according to label instructions, contact your State Pesticide or Environmental Control Agency, or the Hazardous Waste representative at the nearest EPA Regional Office for guidance.

CONTAINER DISPOSAL: Triple rinse (or equivalent). Then offer for recycling or reconditioning, or puncture and dispose of in a sanitary landfill, or by other procedures approved by State and local authorities.

GENERAL: Consult Federal, State or Local authorities for approved alternative procedures.

6150-394

PHOTOCHEMICALLY REACTIVE
MAX V.O.C. - 780 grams per liter
MAX Vapor Pressure of the V.O.C. - <2mm Hg at 20°C

Sold by:

©1994 W.M. BARR & CO INC MEMPHIS, TN 38101-1879

VARNISH LIP

BEST COPY AVAILABLE