

# ECHOLS<sup>®</sup> MOUSE PELLETS

## INSTRUCTIONS

ECHOLS MOUSE PELLETS is for the control of house mice. Open Bait Trays at perforations to expose bait. For best results use several bait trays of Echols Mouse Pellets, placing single trays at intervals of 8 to 12 feet in areas where mice or signs of mice have been seen. Place next to walls, underneath tables, in corner areas, near stored goods, etc. Dark, secluded areas are preferable. Assure an uninterrupted supply of bait for a period of not less than fifteen days. When bait is consumed replace immediately with a filled bait tray, and keep replacing as required until signs of feeding have stopped. If a bait tray shows no signs of feeding for a period of three days move the bait to a new location.

### Echol's Contains New Coated Warfarin Pelleted Bait

Each particle of Warfarin in this product has been coated with a material for the purpose of reducing detection of the Warfarin by the rodents at the time the bait is consumed. The coating may help assure greater acceptance of the bait.

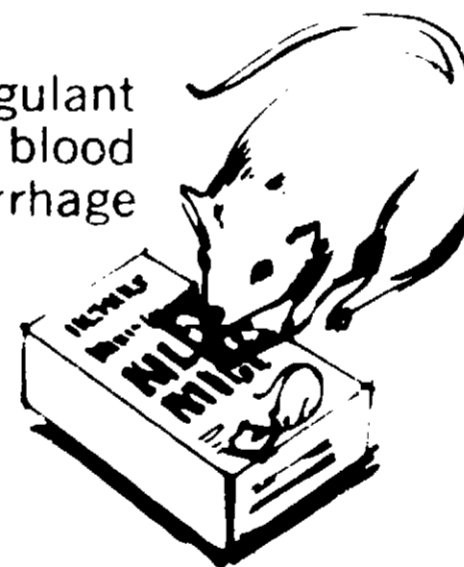
This rodenticide contains Warfarin, an anticoagulant chemical that reduces the clotting ability of the blood and, upon repeated feedings, causes fatal hemorrhage in mice.

#### **CAUTION:** Keep Out of Reach of Children.

If swallowed by humans, domestic animals, wildlife or pets, this material may reduce the clotting ability of the blood and cause bleeding. In such case, intravenous and oral administration of Vitamin K combined with blood transfusions are indicated as in the case of hemorrhage caused by overdose of bishydroxycoumarin. In case of ingestion, call a physician.

Baits must be placed in areas inaccessible to children, pets, wildlife and domestic animals or in tamper-proof bait boxes. Do not contaminate water by cleaning of equipment or disposal of wastes. Apply this product only as specified on this label.

DO NOT Reuse Container. Destroy When Empty.



Open Trays  
on Perforations

#### ACTIVE INGREDIENT:

Warfarin 3-(alpha-acetylbenzyl)- 4-hydroxycoumarin	0.025%
---	--------

INERT INGREDIENTS	99.975%
Total	100.000%

EPA Reg. No. 3941-26

ATHENA CORPORATION, 4838 Woodall, Dallas, Texas 75247

Item No. E-15

EPA Est. 3941 TX-1

Pat. Pending



**INTRODUCING ECHOLS<sup>®</sup>  
MOUSE PELLETS  
KILLS MICE!**



**New Coated  
Warfarin  
Bait**

**8 Ready-to-Use  
BAIT TRAYS**

**CAUTION:** Keep Out of Reach  
of Children (See back  
panel for additional  
cautions)

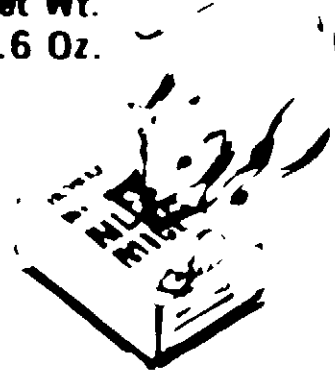
NET WT. 4.8 OZ

ACCEPTED  
7 1975

**CAUTION:** Keep Out of Reach of Children. (See bottom of tray for additional cautions.)

One-Ready-To Use Bait Tray

Net Wt.  
0.6 Oz.



**ECHOLS  
MOUSE  
PELLETS**

**INSTRUCTIONS**

ECHOLS MOUSE PELLETS is for the control of house mice. Open Bait Trays at perforations to expose bait. For best results, use several bait trays of Echols Mouse Pellets, placing single trays at intervals of 4 to 12 feet in areas where mice or signs of mice have been seen. Place next to walls, underneath tables, in corner area, near stored goods, etc. Dark, secluded areas are preferable. Assure an uninterrupted supply of bait for a period of not less than fifteen days. When bait is consumed, replace immediately with a filled bait tray and keep replacing as required until signs of feeding have stopped. If a bait tray shows no signs of feeding for a period of three days, move the bait to a new location.

**CAUTION:** KEEP OUT OF REACH OF CHILDREN. See backpanel for additional cautions.

**DO NOT OPEN HERE!  
NO ABRA POR AQUI**

**PULL PINCH TAB  
IN**

ATHENA CORPORATION

**ECHOLS MOUSE PELLETS**  
Contain Coated Warfarin

**CAUTION**

Keep Out of Reach of Children. This material is highly toxic to many domestic animals. Wildlife or other animals may reduce the clotting ability of blood and cause bleeding. In such case, intravenous administration of Vitamin K combined with blood transfusions are indicated as in the case of hemorrhage caused by overdose of bishydroxy coumatin. In case of ingestion, call a physician immediately. Areas sealed in areas inaccessible to children, pets, wildlife and domestic animals or in tamper-resistant bait boxes. Do not contaminate water by cleaning or equipment or disposal of wastes. Apply this product only as specified on this label.

DO NOT REUSE CONTAINER. Destroy When Empty.

Item No. 1-15

**ACCEPTED**  
OCT 17 1975  
U.S. Environmental Protection Agency  
EPA Reg. No. 100-1047-10