

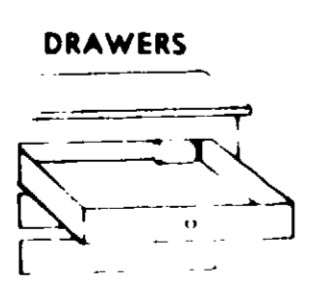
SIZE LA. CARTON	COLOR DREBLUE	DIMENSIONS 2 1/2 X 1 7/8 X 5 1/4
BRAND ECHOLS		VARIETY ROACH TUBES

ACCEPTED
7-12-72
3941-16
EPA PESTICIDE ACT
EPA REGISTRATION SUBJECT
ECHOLS

ECONOMY SIZE
CONTAINS 3 EXTRA LARGE

ECHOLS
ROACH TUBES

No mess — bait is inside tube.
Odorless
Easy to Use — no sprays, dusts or paints. Just put out Echols Roach Tubes for round-the-



DRAWERS
USE
ECHOLS
ROACH
TUBES
on shelves
and cabinets;
SHELVES

Pest Guard

ECHOLS

EPA Reg. No. 3941-16

ECHOLS

Echols Roach Tubes contain a chemically prepared food that kills roaches,

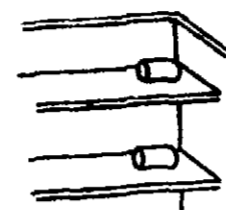


clock control.

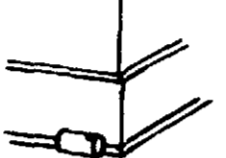
Long Lasting—Echols Roach Tubes are economical and provide months of protection. Keeps killing until all the bait is eaten.

Caution: Apply only in areas inaccessible to children and pets. Avoid contamination of foodstuffs.

ATHENA Corp.
4838 Woodall
Dallas Texas 7



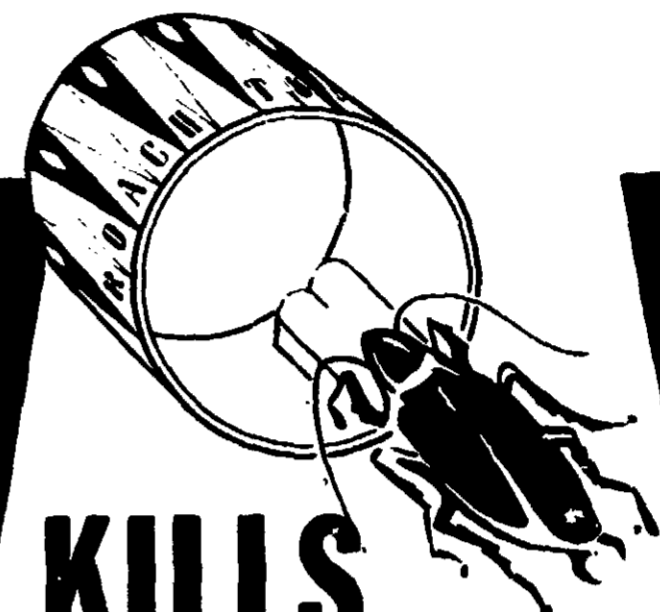
RUNWAYS



SINKS & DRAINS



on and behind drawers; near and under kitchen drainboards; attached to insect runways by cellophane tape or other means; wherever insects have been observed.



KILLS ROACHES

WATERBUGS
SILVERFISH
CRICKETS

CAUTION: Keep out of Reach of Children and Pets. See other warnings on back panel.

ACCEPTED
7-12-72
3941-16
UNDER THE FEDERAL INSECTICIDE AND FUNGICIDE ACT FOR ECONOMIC POISONED UNDER NO. SUBJECT TO ATTACHED COMMENTS.

CONTAINS **3** EXTRA LARGE
ECONOMY SIZE

ECHOLSTM

ROACH TUBES

waterbugs, silverfish, crickets. Insect pests crawl off and die after they feed on the bait.

Active Ingredient
Boric Acid . . . 40%
Inert Ingredients 60%
Carton contains 3 Roach Tubes each containing 0.06 oz. bait, net weight.
Total net wt. 0.18 ozs.

STK. #E9C 1