



Manufactured by:
A.B.C. COMPOUNDING CO, INC.
Atlanta, GA 30321

Insecticide 300

Synergized Pyrethrin Spray

For Mill, Food Plants and The Home

EPA REG. NO. 3862-105-
EPA EST. NO. 3862-GA

- Active Ingredients**
- Pyrethrins 0.300%
 - * Piperonyl butoxide, technical 0.600%
 - ** N-octyl bicycloheptane dicarboximide 1.000%
 - *** Other Ingredients: 98.100%

* Consists of 0.48% (butylcarbityl) (6-propylpiperonyl) ether and 0.12% related compounds.
 ** MGK 264 Insecticide Synergist
 *** Contains Petroleum Distillates

ESPACIO EN ROCÍO Si usted no entiende la etiqueta, busque a alguien para que se la explique a usted en detalle. (If you do not understand this label, find someone to explain it to you in detail.)

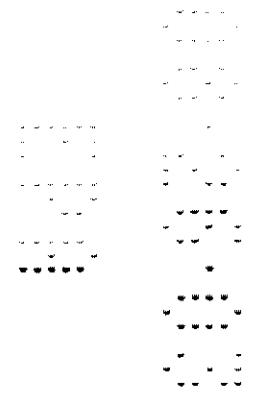
KEEP OUT OF REACH OF CHILDREN
CAUTION
HARMFUL IF SWALLOWED. SEE DIRECTIONS AND OTHER PRECAUTIONS ON BACK PANEL.

Net Contents: 1 gallon (3.8 L)



A C C E P T E D
 NOV 23 2003
 Under the Federal Insecticide, Fungicide, and Rodenticide Act, as amended, for the pesticide Registered under EPA Reg. No. **3862-105**

LA-497 (gallon screen)
 PMS 199 (dark red)
 6-24-98 per Michael Rekelman - DELETE DOT
 (epa update 05-24-03 stan)
 (correct ink color/fix first aid tabs/epa chgs./back to diane 8-8-03 va)
 corrected typo 08/13/03



272

DIRECTIONS FOR USE

It is a violation of Federal law to use this product in a manner inconsistent with its labeling.

Do not apply directly to food. Do not apply while food processing is underway. Remove pets and bird cages and remove or cover fishbowls before spray application

Exposed edible products and their packaging materials must be removed, tightly covered, or stored in closed containers before spraying. Facilities and equipment must be thoroughly washed with an effective cleaning compound and rinsed with potable water after spraying.

FLIES, MOSQUITOES, GNATS: Close room and discharge mist vigorously in all parts of room, using 1/2 to 1 ounce for each 1000 cubic feet of space. Leave room closed for at least ten minutes. Do not remain in closed treated area. Ventilate when treatment is completed. Sweep up and destroy fallen insects. Repeat as needed.

FLEAS (INFESTING PREMISES): Remove and destroy animals' bedding and spray sleeping quarters freely, forcing the spray into all cracks in the floor and about the room. Repeat when reinfested.

ROACHES, WATERBUGS: Apply in all cracks and crevices in woodwork, underneath sinks, dark places behind pipes, and in all places where roaches and waterbugs infest, contacting as many insects as possible. Repeat the operation as often as necessary.

CLOTHES MOTHS, CARPET BEETLES: Spray all articles to be protected, giving particular attention to folds and seams. Interior surfaces should be sprayed regularly. The treatment should be repeated every 30 days unless the articles are stored in moth-tight containers.

GRANARY WEEVIL, RICE WEEVIL, CONFUSED FLOUR BEETLE, RUST RED FLOUR BEETLE, SAW-TOOTHED GRAIN BEETLE, CIGARETTE BEETLE, DRUG STORE BEETLE, CADELLES, GRAIN MITES (Accessible Stages): Wet surfaces thoroughly and treat all infested surface areas, insect runways and hiding places at the rate of 1/2 gallon of this material to 1000 square feet of area, or to the point of run-off. Repeat when necessary. Do not treat stored grain with this product

This spray is especially designed for use in cafes, restaurants, food storage warehouses, flour mills, meat packing plants and the like. This spray is designed for use in either fogging equipment or hand sprayers.

STORAGE AND DISPOSAL

Do not contaminate water, food or feed by storage or disposal.
STORAGE: Do not store at temperatures below 32°F. Store only in original container.
CONTAINER DISPOSAL: *Plastic containers:* Triple rinse (or equivalent). Then offer for recycling or reconditioning, or puncture and dispose of in a sanitary landfill or incineration, or, if allowed by state and local authorities, by burning. If burned, stay out of smoke. Wastes resulting from the use of this product may be disposed of on site or at an approved waste disposal facility. *Metal containers:* Triple rinse (or equivalent). Then offer for recycling or reconditioning, or puncture and dispose of in a sanitary landfill, or by other procedures approved by state and local authorities

PRECAUTIONARY STATEMENTS HAZARDS TO HUMANS AND DOMESTIC ANIMALS

CAUTION

KEEP OUT OF REACH OF CHILDREN. Harmful if swallowed or absorbed through the skin. Avoid contact with skin, eyes or clothing. In case of contact immediately flush eyes or skin with plenty of water. Get medical attention if irritation persists. Avoid breathing vapors or spray mist. Wash thoroughly with soap and water after handling.

PHYSICAL OR CHEMICAL HAZARDS

Combustible. Do not use or store near heat or open flame. Do not apply this product around electrical equipment due to the possibility of shock hazard

FIRST AID:

If swallowed	<ul style="list-style-type: none"> • Call a poison control center or doctor immediately for treatment advice • Do not give any liquid to the person • Do not induce vomiting unless told to do so by the poison control center or doctor • Do not give anything by mouth to an unconscious person
If on skin or clothing	<ul style="list-style-type: none"> • Take off contaminated clothing • Rinse skin immediately with plenty of water for 15-20 minutes • Call a poison control center or doctor for treatment advice
If in eyes	<ul style="list-style-type: none"> • Hold eye open and rinse slowly and gently with water for 15-20 minutes • Remove contact lenses, if present, after the first 5 minutes, then continue rinsing eye • Call a poison control center or doctor for treatment advice
If inhaled	<ul style="list-style-type: none"> • Move person to fresh air • If person is not breathing, call 911 or an ambulance, then give artificial respiration, preferably by mouth-to-mouth, if possible • Call a poison control center or doctor for further treatment advice
Have the product container or label with you when calling a poison control center or doctor or going for treatment	
NOTE TO PHYSICIAN - Contains petroleum distillate - vomiting may cause aspiration pneumonia	

ENVIRONMENTAL HAZARDS

This pesticide is toxic to fish and aquatic invertebrates. Do not apply directly to water, to areas where surface water is present, or to intertidal areas below the mean high water mark. Do not contaminate water when disposing of equipment wash waters or rinsate