

DIRECTIONS

Dust underneath and top of foliage thoroughly. Apply to both plants and insects. Begin application when plants are well established or when new growth appears. Dust early in the morning or evening when air is calm. Repeat every seven to ten days or as often as necessary, whether insects are present or not to prevent infestation. Dust when air is calm.

CONTROL CHART

APPLY BEFORE PLANTS ARE INFESTED AND DAMAGED BY THE FOLLOWING INSECTS AND DISEASES:

7-Day Interval Between Last Application and Harvest. **BEANS:** Mexican Bean Beetle, Leafhopper, Leaf Beetle, 12 Spotted Beetle, Ear Worm, Western Black Flea Beetle, Lygus Bug, Blister Beetle, Rust, Anthracnose, Downy Mildew. **BEETS:** (Do not apply to beets within 14 days of harvest if treated tops are to be used for food or feed) Cabbage Worm, Flea Beetle, Downy Mildew, Cercospora Leaf Spot. **CABBAGE:** Imported Cabbage Worm, Diamondback Moth Larvae, Thrips, Cabbage Looper, Blister Beetle, Downy Mildew, Cercospora and Alternaria Leaf Spots. **TOMATO:** Tomato Fruit Worm, Aphids, Flea Beetle, Early and Late Blight, Anthracnose, Septoria Leaf Spot. **CUCUMBERS:** Striped Cucumber Beetle. **WATERMELON, CANTALOUPE:** Striped Cucumber Beetle.

14-Day Interval Between Last Application and Harvest (controls only early and mid-season diseases on these crops. For more effective control of some diseases on these crops, a fungicide alone may have to be used closer to harvest.) **STRAWBERRY:** Strawberry Leaf Roller, Strawberry Spittle Bug, Leaf Spot, Leaf Scorch. **SPINACH:** (Remove residues by washing) Flea Beetle, Webworm, Downy Mildew, White Rust. **GRAPES:** Berry Moth, Leafhopper, Black Rot, Bitter Rot, Ripe Rot. **CARROTS:** Rust Fly, Cercospora and Alternaria Leaf Spots.

FLOWERS — CARNATIONS, CHRYSANTHEMUMS, SNAPDRAGONS: Thrips, Cyclamen Mite, Rust, Leaf Spot, Anthracnose. **GLADIOLUS:** Thrips, Botrytis, Curvularia, Stemphylium. **AZALEAS, CAMELIAS:** Petal Blight. Apply dust liberally to ground and litter under the plants and into the flowers of azaleas, beginning when flower buds swell and repeating at 5 to 7 day intervals through blooming season. **ROSES:** Aphids, Strawberry Rootworm Beetle, Leafhopper, Black Spot.

CAUTION

May cause irritation of nose and throat! Do not breathe dust. Keep out of reach of children and domestic animals.

Avoid contamination of food and food utensils. Wash all vegetables thoroughly before using.

This product is toxic to fish. Keep out of lakes, streams or ponds. Do not contaminate water by cleaning of equipment, or disposal of wastes.

Do not reuse empty container. Destroy by burying with waste or burning. Stay away from smoke or fumes.

NOTICE

Seller warrants that the product conforms to its chemical description and is reasonably fit for the purpose stated on the label when used in accordance with directions under normal conditions of use, but neither this warranty nor any other warranty of MERCHANTABILITY OR FITNESS FOR A PARTICULAR PURPOSE, express or implied, extends to the use of this product contrary to label instructions, or under abnormal conditions, or under conditions not reasonably foreseeable to seller, and buyer assumes the risk of any such use.

Packed by weight, not in volume. Product may settle in shipment.

EPA Reg. No. 3772-9

EPA Est. 407-IA-1

J-71-N-3015B-F

NET WEIGHT 2 LBS.

MANUFACTURED FOR

EARL MAY SEED & NURSERY CO.

SHENANDOAH, IOWA 51601

EARL
MAY

MULTI-PURPOSE

**BUG
DUST**

ACCEPTED

JAN 21 1970

DIRECTIONS

ROSES, CARNATIONS, CHRYSAN-
 THEMUMS, SNAPDRAGONS, PANSIES,
 MARIANNA, RANUNCULUS, SPANISH
 GLADIOLUS, BIRCH,
 HYDRANGEA, AZALEAS, CAMELIA,
 PEONIES, AND OTHER DECORATIVE
 PLANTS.

PREPARATION

BEFORE PLANTS ARE IN-
 FECTED AND DAMAGED BY THE
 INSECTS AND DISEASES.

BEANS

Apply to the leaves of the
 plants. Use a fine spray
 nozzle. Apply to the leaves
 of the plants. Use a fine
 spray nozzle. Apply to the
 leaves of the plants. Use a
 fine spray nozzle.

BELLS

Apply to the leaves of the
 plants. Use a fine spray
 nozzle. Apply to the leaves
 of the plants. Use a fine
 spray nozzle. Apply to the
 leaves of the plants. Use a
 fine spray nozzle.

VEGETABLES

Apply to the leaves of the
 plants. Use a fine spray
 nozzle. Apply to the leaves
 of the plants. Use a fine
 spray nozzle. Apply to the
 leaves of the plants. Use a
 fine spray nozzle.

**CUCUMBER
 WATERMELON**

Apply to the leaves of the
 plants. Use a fine spray
 nozzle. Apply to the leaves
 of the plants. Use a fine
 spray nozzle. Apply to the
 leaves of the plants. Use a
 fine spray nozzle.

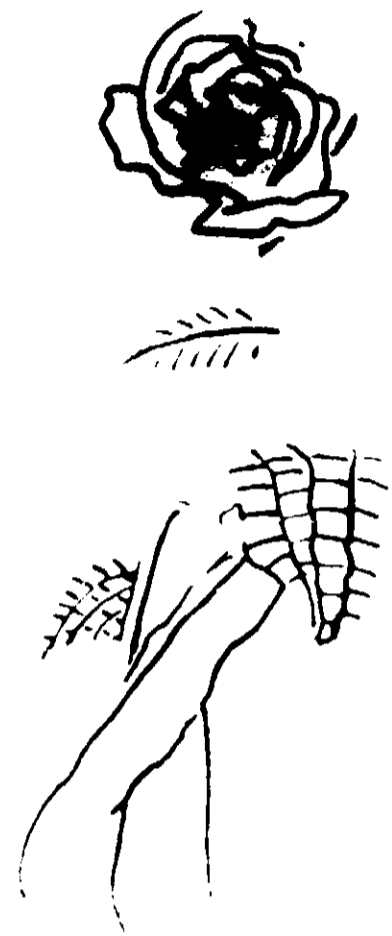
FRUIT TREES

Apply to the leaves of the
 plants. Use a fine spray
 nozzle. Apply to the leaves
 of the plants. Use a fine
 spray nozzle. Apply to the
 leaves of the plants. Use a
 fine spray nozzle.

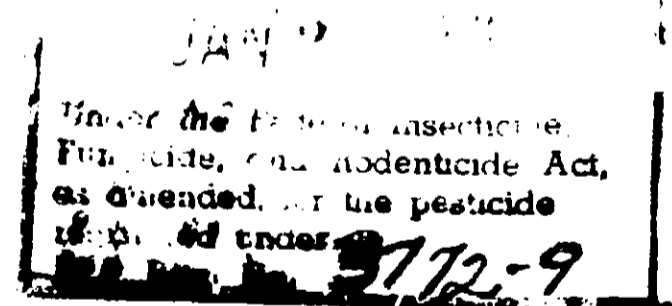
NOTICE

NOTICE

Under the Federal Insecticide,
 Fungicide, and Rodenticide Act,
 as amended, for the pesticide
 registered under



**BUG
 DUST**



ACTIVE INGREDIENTS:

Technical Methoxychlor*	3.00%
Rotenone	0.75%
Other Cube Resins	1.50%
Zinc (Zinc Ethylene Dithiocarbamate)**	3.25%
Sulphur	1.00%
INERT INGREDIENTS:	84.50%
Total	100.00%

*Equivalent to 2.64% 2,2-bis (p-methoxyphenyl)-1, 1, 1-trichloroethane
 and 0.36% other isomers and related compounds.

CAUTION

KEEP OUT OF THE REACH OF CHILDREN.

See other cautions on back panel.