

CAUTION: Keep out of reach of children. Harmful if swallowed. Avoid contact with eyes, skin and clothing. Flush contaminated eyes with plenty of water and get medical attention if irritation persists. Wash contaminated clothing before reuse. Avoid breathing vapors or spray mist. Keep away from food, foodstuffs and domestic water supplies. Do not smoke while using. Wash thoroughly after handling. If swallowed do not induce vomiting. CALL A PHYSICIAN IMMEDIATELY.

Note to physician: Contains petroleum distillate. If gastric lavage is deemed necessary, undertake only after proper placement of auffed endotracheal tube. Active ingredients contain a cholinesterase inhibitor. Treat symptomatically. Atropine is an antidote.

USE PRECAUTIONS

Do not allow children or pets to contact treated surfaces until spray has dried.

Do not spray air in rooms or use on plants. Apply as a surface spray only as specified on this label.

Do not allow spray to contact food, foodstuffs or water supplies. Thoroughly wash dishes and food-lathering utensils if contaminated with this product. Remove pets and cover fish bowls before spraying.

This product is toxic to fish. Do not contaminate water by cleaning of equipment or disposal of wastes. Do not reuse empty container. Destroy when empty and discard in a safe place.

NOTICE: Seller warrants that the product conforms to the description on the label when used in accordance with directions under normal conditions of use, but neither this warranty nor any other warranty of MERCHANTABILITY or FITNESS FOR A PARTICULAR PURPOSE, express or implied, extends to the use of this product other than as labeled, instructions, or under abnormal conditions or under conditions not reasonably foreseeable to seller, such as, for example, the use of any such use.

HOUSEHOLD INSECTICIDE

ready to use
With DURSBAN*

A ready-to-use formulation for control of Cockroaches, Ants, Crickets, Silverfish, Spiders and Brown Dog Ticks in and around homes, apartments, garages and similar residential structures. Also for use out-of-doors as an aid in reducing annoyance from flies and mosquitoes entering the home.

CAUTION

KEEP OUT OF REACH OF CHILDREN

Read complete precautions on back panel

ACTIVE INGREDIENTS:

Chloropyrifos (O,O-diethyl O-(3,5,6-trichloro-2-pyridyl) phosphorothioate)	0.5%
Pyrethrins	0.1%
Piperonyl butoxide, technical**	0.2%
N-octyl bicycloheptene dicarboximide	0.3%
Aromatic petroleum derivative solvent	1.0%
Petroleum distillate	97.9%
Total	100.0%

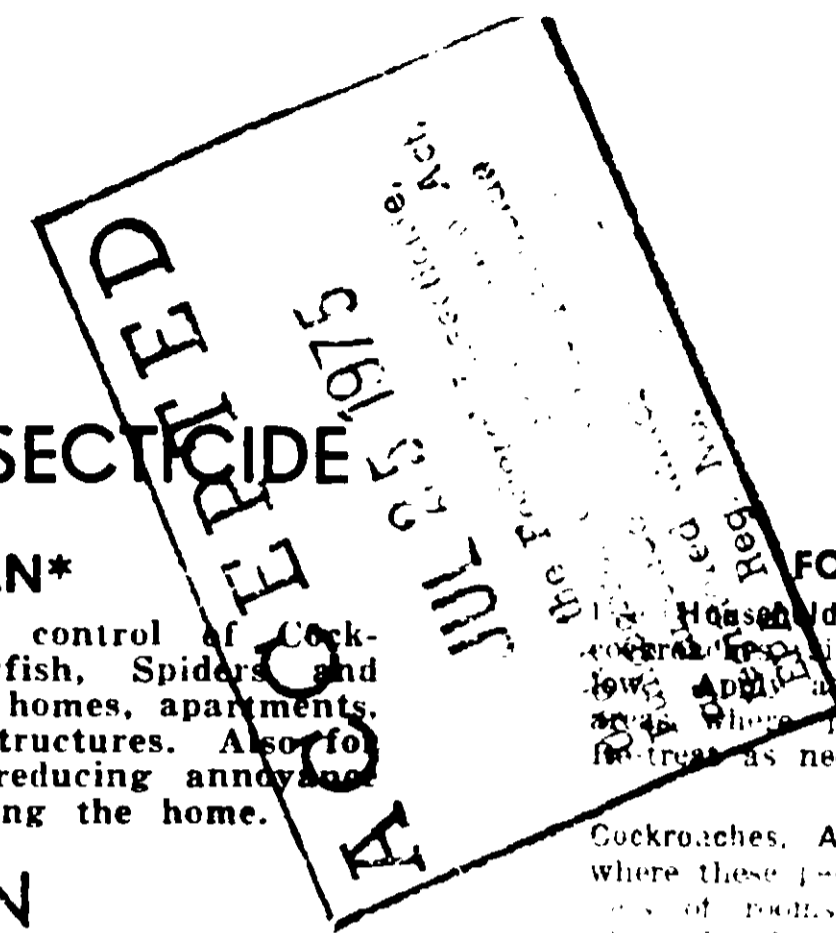
**equivalent to 0.16% (butylcarbityl) (6-propylpiperonyl) ether and 0.01% related compounds.

*DURSBAN — Trademark of the Dow Chemical Company U. S. Patent No. 3,244,536

COMBUSTIBLE. DO NOT USE, POUR, SPILL OR STORE NEAR HEAT OR OPEN FLAME

Net Contents 1 pint

Manufactured by
ECONOMY PRODUCTS COMPANY INC.
Shenandoah, Iowa 51601



**HOUSEHOLD INSECTICIDE
USE DIRECTIONS**

FOR SPOT APPLICATION ONLY

Use Household Insecticide as a spot treatment to control cockroaches, silverfish, spiders and other pests specified below. Apply as a coarse (large droplet) spray to localized areas where pests may occur. Spray surfaces until wet for treatment as needed.

Cockroaches, Ants, Crickets, Silverfish, Spiders: Spray areas where these pests are found or may hide, including dark corners of rooms and closets; cracks and crevices in walls; along baseboards and door and window sills and frames; behind and beneath sinks, stoves, refrigerators and cabinets and around garbage cans, plumbing and other utility installations. Pests often enter hiding places should be sprayed directly. The ants apply to ant trails, also around doors and windows and where else these pests may find entrance.

Brown Dog Ticks: To control these pests, thoroughly apply insecticide to infested areas such as pet beds and resting quarters, narrow cracks and crevices, along and behind baseboards, window and door frames, and localized areas of the floor, floor covering where these pests may be found. Old bedding of pets should be removed and replaced with clean fresh bedding after treatment. Do not spray pets with this product.

Flies and mosquitoes: Use only out-of-doors as an aid in reducing annoyance from the insects. Spray outside surfaces of window and door frames as well as other areas where these pests may enter the home. Also spray deck chairs and other outdoor furniture, such as garden hoses or watering cans, at intervals during the summer months. Insects and the annoyance of the insects on treated surfaces will be reduced. Effectiveness of treatment when effectiveness diminishes.

EPA REG. NO. 770-200

EPA EST. 7770-NB-1

