



UNITED STATES ENVIRONMENTAL PROTECTION AGENCY
WASHINGTON, DC 20460

OFFICE OF CHEMICAL SAFETY
AND POLLUTION PREVENTION

June 28, 2023

Krystyna M. Kirschner, Ph.D.
Scientist, FIFRA Regulatory
The Procter & Gamble Company
Electronic Transmittal: kirschner.k.1@pg.com

Subject: Notification per PRN 98-10 – Minor Label Changes
Product Name: TriLambda AB
EPA Registration Number: 3573-102
Received Date: June 15, 2023
Action Case Number: 00452846

Dear Dr. Kirschner:

The Agency is in receipt of your Application for Pesticide Notification under Pesticide Registration Notice (PRN) 98-10 for the above referenced product. The Antimicrobials Division (AD) has conducted a review of this request for its applicability under PRN 98-10 and finds that the action requested falls within the scope of PRN 98-10.

The label submitted with the application has been stamped “Notification” and will be placed in our records.

Should you wish to add/retain a reference to the company’s website on your label, then please be aware that the website becomes labeling under the Federal Insecticide Fungicide and Rodenticide Act and is subject to review by the Agency. If the website is false or misleading, the product would be misbranded and unlawful to sell or distribute under FIFRA section 12(a)(1)(E). 40 CFR 156.10(a)(5) lists examples of statements EPA may consider false or misleading. In addition, regardless of whether a website is referenced on your product’s label, claims made on the website may not substantially differ from those claims approved through the registration process. Therefore, should the Agency find or if it is brought to our attention that a website contains false or misleading statements or claims substantially differing from the EPA approved registration, the website will be referred to the EPA’s Office of Enforcement and Assurance.

If you have any questions, you may contact Joe Daniels via email at Daniels.joseph@epa.gov.

Sincerely,

A handwritten signature in black ink, appearing to read "Tara Flint Silva".

for

Tara Flint Silva
Acting Product Manager 31
Regulatory Management Branch 1
Antimicrobials Division
Office of Pesticide Programs

TriLambda AB

NOTIFICATION

<<FRONT LABEL>>

(TriLambda AB)
[or Alternate Brand Name]

3573-102

The applicant has certified that no changes, other than those reported to the Agency have been made to the labeling. The Agency acknowledges this notification by letter dated:

06/28/2023

Active Ingredients:	Didecyl Dimethyl Ammonium Chloride.....	0.0399%
	Chlorhexidine Diacetate.....	0.0133%
Other Ingredients:	99.9468%
TOTAL:	100.0000%

KEEP OUT OF REACH OF CHILDREN

CAUTION(:) See (back)(/)(side) panel for other precautions.

(Net Contents): [as indicated on container]
(Refill(s)) (Bottle(s))
XX (QT) (FL OZ) (L) (mL)

<<Note to reviewer: The following additional contents statements to be used with Multi-Packs/Co-Packs containing dry mopping pads>>

(XX [Dry] [Mopping] Pads)
(XX x XX IN) (/) (XX x XX cm) (each)

(Fresh Citrus) (Febreze Citrus & Light Scent)

NOTE: Bracketed information is denoted as: << directive >>, (optional text), [optional text], {insert as noted}.
The term "this product" or "TriLambda AB" used throughout this document may be replaced with the marketed product brand name and may be followed by a© or ®. Qualifying symbols may be replaced with another symbol on the final printed label.
The product label must identify the specific bacteria.

<< Back/Side Panel >>

<<Reviewer Note: Qualifying symbols may be replaced with another symbol on the final printed label.>>

(TriLambda AB)
[or Alternate Brand Name]

<<Reviewer Note: An alternate brand name may replace “TriLambda AB” “WetJet” or “Swiffer WetJet” throughout the label and may be followed by © or ®>>

DIRECTIONS FOR HOUSEHOLD USE:

It is a violation of Federal law to use this product in a manner inconsistent with its labeling.

GENERAL CLEANING:

<<Reviewer Note: Instructions may be shown with icons (see optional graphics section) depicting the use of the TriLambda AB bottle and WetJet mop.>>

1. DO NOT REMOVE CAP. [Place the arrow against the (Swiffer) WetJet handle (pole).]
2. Insert [bottle] into (Swiffer) WetJet [Series 2[.0]] appliance\device.
3. Spray solution.
4. No need to rinse.

<<or Current WetJet bottle instructions>>

Do not remove cap. [Place the arrow against the (Swiffer) WetJet pole.] Insert [bottle] into (Swiffer) WetJet [Series 2[.0]] device.

Spray solution and mop. No need to rinse.

- (1) Insert, (2) Spray, (3) Eject Empty Bottle & Replace

BOTTLE FITS ANY (SWIFFER) WETJET NEW OR OLD

THIS SIDE TOWARDS POLE (arrow on back of bottle)

Place arrow against the (Swiffer) WetJet handle

TO SANITIZE: For use on hard non-porous floors. Use the TriLambda AB mop to spray floor until thoroughly wet. Let stand and allow surface to remain visibly wet for 5 minutes before mopping, then remove excess liquid. For visibly soiled floors, clean before following sanitizing instructions. [Effective against *Staphylococcus aureus* (ATCC 6538)[,] [and] *Klebsiella aerogenes* (ATCC 13048)[,] [and] *Escherichia coli* (ATCC 11229)] .]

TO DISINFECT: For use on hard non-porous floors. Use the TriLambda AB mop to spray floor until thoroughly wet. Let stand and allow surface to remain visibly wet for 10 minutes before mopping, then remove excess liquid. For visibly soiled floors, clean before following disinfection instructions. Limited Disinfectant. [Effective against *Salmonella enterica* (ATCC 10708).]

Do not use on unfinished, oiled or waxed wood floors.

NOTE: Bracketed information is denoted as: << directive >>, (optional text), [optional text], {insert as noted}. The term “this product” or “TriLambda AB” used throughout this document may be replaced with the marketed product brand name and may be followed by a© or ®. Qualifying symbols may be replaced with another symbol on the final printed label. The product label must identify the specific bacteria.

PRECAUTIONARY STATEMENTS: Hazards to Humans and Domestic Animals

CAUTION: Causes moderate eye irritation. Avoid contact with skin, eyes or clothing. Wash thoroughly with soap and water after handling and before eating, drinking, chewing gum, using tobacco or using the toilet. Remove and wash contaminated clothing before reuse.

FIRST AID: IF IN EYES: hold eye open and rinse slowly and gently with water for 15-20 minutes. Remove contact lenses, if present, after the first 5 minutes, then continue rinsing eye. **If on Skin or Clothing,** Take off contaminated clothing. Rinse skin immediately with plenty of water for 15-20 minutes. Contact a poison control center or doctor for treatment advice. Have the product container or label with you when calling the poison control center or doctor or going for treatment.

STORAGE/ AND DISPOSAL: Store in cool place. Nonrefillable container. Do not reuse or refill this container. Wrap (container) and put in trash or offer for recycling if available.

[Contains no phosphate]

[For household use]

(Patent Pending xxxx)
(Under US Patent: US xxxx / Made in USA under U.S. Patent xxxx)

[Questions?] [/] [Comments?] [Let us help you.] <<appropriate telephone number>>

©P&G
(year)
UPC symbol
TM
®

Distr.(Distributed)(MADE [in USA]) by PROCTER & GAMBLE, (1 P&G Plaza), CINCINNATI, OH
45202(-3393)(-3315) (MADE IN USA)

EPA Reg. No.: 3573-102
EPA Est. No.:

<<insert appropriate EPA Est. No.>>
[Lot code designates actual Est.] [Circled] [letter is the last/first digit/number/letter of lot number.]

NOTE: Bracketed information is denoted as: << directive >>, (optional text), [optional text], {insert as noted}.
The term "this product" or "TriLambda AB" used throughout this document may be replaced with the marketed product brand name and may be followed by a© or ®. Qualifying symbols may be replaced with another symbol on the final printed label.
The product label must identify the specific bacteria.

<< FRONT/BACK/SIDE LABEL – Marketing/Product Performance Claims>>

<<Fragrance Claims>>

(With) Citrus (Scent)
(With) (Febreze) Citrus & Light (Scent)
(With) Fresh Citrus (Scent)
(With) Fresh (Scent)
(With) Grapefruit (Scent)
(With) Lavender (Scent) (Scented)
(With) Lemon (Citrus) (Scent)
(With) Lime (Scent)
(With) Meadows (Scent)
(With) Mint (Scent)
(With) Orange (Scent)

(Helps) eliminate(s) odors (in the air) (with a Febreze Fresh Scent)
(Swiffer WetJet) (Helps) eliminate(s) odors (with a fresh scent).
(Swiffer WetJet) (Helps) eliminate(s) odors in the air (with fresh scent).
(Swiffer WetJet) (Helps) fight(s) odors in the air with a (Febreze) fresh scent.
(Swiffer WetJet) (with) Febreze Citrus & Light Scent

Also available in (Multi-Purpose) (Multi-surface) (Mr Clean) (Cleaner) (with) (Open Window Fresh Scent with the power of Dawn), (Multipurpose) (Multisurface) (Cleaner) (Gain Scent), and (Wood) (Cleaner), Sweet Citrus & Zest, Lavender & Vanilla Comfort, Lemon, Citrus Zing, Citrus, Lavender, Meadows & Rain, Summer Citrus, Febreze Odor Defense, Summer Citrus, Linen & Sky, Meadows & Rain, Tropical Sunrise, Ocean Water Sparkle, Moonlight Breeze
Long lasting (Febreze) fresh scent
Long lasting Febreze fresh/citrus & light scent
Long lasting freshness
Now with the freshness of Febreze
With Febreze (Fresh Scents/Freshness)

<<Product/Packaging Claims>>

Floor Cleaner
Multi-Surface[‡] [Floor] Cleaner
Multi-Surface[‡]
All-In-One mopping system
Bonus pack
Club size
Easy to use
[‡]hard, non-porous

Economy size
Large pack
Refill, refills
Swiffer WetJet starts with a fresh pad each time
Twin Pack

NOTE: Bracketed information is denoted as: << directive >>, (optional text), [optional text], {insert as noted}.
The term “this product” or “TriLambda AB” used throughout this document may be replaced with the marketed product brand name and may be followed by a© or ®. Qualifying symbols may be replaced with another symbol on the final printed label.
The product label must identify the specific bacteria.

Triple Pack
Multi[-]Pack
Value pack
WetJet Mopping System
4-pack
3-pack
2-pack

[TriLambda/Brand Name] Mopping Refill Pack
Refill [Mopping] [Kit] [Pack]
Mixed [refill] bundle pack
Pad [&][+] [product] solution bundle pack

<<Note to reviewer: *XX designates a numerical value*>>

Includes [XX] [Swiffer WetJet] [Mopping] [Pads] [and] [XX Bottles] [of] [TriLambda/Brand Name] [Antibacterial] [Cleaning] Solution
XX Mopping Pads + XX Bottles

<<Cleaning Claims>>

Cleaning solution dissolves tough messes
Cleans away everyday dirt and stains
Cleans better than a mop
Cleans everyday tough messes
Cleans dirt, stains and messes better than a mop
Cleans dried-on clay
Cleans dried on food
Cleans dried on yard gunk
Cleans (even) dried on clay
Cleans even dried on food
Cleans even dried on yard gunk
Cleans (even) ground in scuff marks
Cleans even tough greasy dirt
Cleans even tough greasy food
Cleans even tough greasy garage dirt
Cleans even what you can not see
Cleans floors
Cleans stuck on food gunk
Cleans to a shine
Cleans tough greasy dirt
Cleans tough greasy food
Cleans your floors to their natural shine
Deodorizes
Disposable pad locks away dirty solution
Dissolves even tough greasy dirt
Dissolves sticky dried-on juice
Dissolves (tough) (greasy) (dirt) (stains)
Does not contain detergents
Does not leave a dulling film/residue
Dries (fast) (with) (virtually) (no streaks) (or hazing)
Extra cleaning power
Fights tough messes
Fights tough stains
For use on washable hard, non-porous floors
For use on/Great for vinyl, glazed ceramic, laminate, and finished wood floor surfaces
For use on/Great for vinyl, glazed ceramic, sealed marble, laminate, and finished wood floors

NOTE: Bracketed information is denoted as: << directive >>, (optional text), [optional text], {insert as noted}.
The term "this product" or "TriLambda AB" used throughout this document may be replaced with the marketed product brand name and may be followed by a© or ®. Qualifying symbols may be replaced with another symbol on the final printed label.
The product label must identify the specific bacteria.

For vinyl, glazed ceramic, laminate, and finished wood floors
Freshens as you clean
Gets floors cleaner than a mop
Great for/For use on finished floors/glazed ceramic tile/vinyl surfaces
Helps prevent streaks and haze
Helps prevent streaks and hazing
Leaves floors fresh and clean
Leaves floors spotless
Makes cleaning easier
Mopping made easy

No haze, films
No need to rinse
No rinsing required
No sticky residue
No streaks
No streaks & haze
Pre-mixed, dirt-dissolving, cleaning solution
Pad traps dirt your mop can push around
Quicker, easier, cleaner
Quickly cleans floors to a shine
Remove the dirt leave the shine (clean)
Removes stains
Removes tough dried-on messes
Removes tough stains
Safe on finished hard, non-porous surfaces (floors) (wood floors)**
Safe on hard, non-porous wood (floors) (flooring), (surfaces)**
Safe on wood [and]& all finished floors**
Solution dissolves tough sticky messes
Strong cleaning power
(Traditional) mops can grow bacteria
Traps dirt
TriLambda AB is great for/for use on vinyl, glazed ceramic, sealed marble, laminate, and finished wood floors**
WetJet pad traps & locks dirt, grime, soils
Multi-Surface [finished wood][wood][luxury vinyl tile][LVT][laminate][stone][ceramic tile][vinyl][vinyl tile]**

**Excludes unfinished, waxed, or oiled [wood[en]] surfaces

**DO NOT USE ON UNFINISHED[,] OILED[,] OR WAXED WOODEN BOARDS, NON-SEALED TILES[,] OR CARPETED FLOORS BECAUSE THEY MAY BE WATER SENSITIVE

Bottle for use with [original] [Swiffer] WetJet [Series 1[.0]] [mop] [mopping] [device] [system] [only]
Bottle fits [only] [original] [Swiffer] WetJet [Series 1[.0]] [mop] [mopping] [device] [system] [only]
Use with [original] [Swiffer] WetJet [Series 1[.0]] [mop] [mopping] [device] [system] [only]
Bottle for use with [new] [Swiffer] WetJet [Series 2[.0]] [mop] [mopping] [device] [system] [only]
Bottle fits [only] [original] [Swiffer] WetJet [Series 2[.0]] [mop] [mopping] [device] [system] [only]
Use with [new] [Swiffer] WetJet [Series 2[.0]] [mop] [mopping] [device] [system] [only]
Bottle for use with [new] [Swiffer] WetJet [Max] [mop] [mopping] [device] [system] [only]
Bottle fits [only] [original] [Swiffer] WetJet [Max] [mop] [mopping] [device] [system] [only]
Use with [new] [Swiffer] WetJet [Max] [mop] [mopping] [device] [system] [only]
[Swiffer WetJet] [Series 1[.0]] Mopping System [with Antibacterial] [brand name] [Cleaning] [Solution]
[Swiffer WetJet] [Series 2[.0]] Mopping System [with Antibacterial] [brand name] [Cleaning] [Solution]
[Swiffer WetJet Max] Mopping System [with Antibacterial] [brand name] [Cleaning] [Solution]
[Swiffer WetJet] [Series 1[.0]] Starter Kit [with Antibacterial] [brand name] [Cleaning] [Solution]
[Swiffer WetJet] [New] [Series 2[.0]] Starter Kit [with Antibacterial] [brand name] [Cleaning] [Solution]

NOTE: Bracketed information is denoted as: << directive >>, (optional text), [optional text], {insert as noted}.
The term "this product" or "TriLambda AB" used throughout this document may be replaced with the marketed product brand name and may be followed by a© or ®. Qualifying symbols may be replaced with another symbol on the final printed label.
The product label must identify the specific bacteria.

[Swiffer WetJet Max] Starter Kit [with Antibacterial] [brand name] [Cleaning] [Solution]

<<PESTICIDAL Claims>>

(Swiffer) Antibacterial (cleaner/formula)

Antibacterial Cleaner

Antibacterial [Floor] Cleaner

Cleans and deodorizes

Cleans and kills/eliminates/removes/reduces 99.9% of bacteria^{§*} on floors

Cleans and removes household bacteria^{§*}

Cleans and sanitizes

Cleans and sanitizes hard, non-porous floors wall-to-wall

Cleans and sanitizes floors[‡] wall-to-wall

Cleans, deodorizes and removes 99.9% of bacteria^{§*}

Cleans, sanitizes and deodorizes

Cleans soils where bacteria can hide

Kills 99.9% of bacteria^{§*} and (helps) eliminate(s) odors (with fresh scent)

Kills 99.9% of bacteria^{§*} and (helps) eliminate(s) odors in the air (with fresh scent)

Kills and prevents the spread of 99.9% of *Klebsiella aerogenes*/*K. aerogenes* on treated surfaces

Kills and prevents the spread of 99.9% of *Staphylococcus aureus*/*S. aureus* on treated surfaces

Kills/Eliminates/Removes 99.9% (of) *Klebsiella aerogenes*/*K. aerogenes*

Kills/Eliminates/Removes 99.9% of bacteria^{§*}

Kills/Eliminates/Removes 99.9% of bacteria^{§*} on floors

Kills/Eliminates/Removes 99.9% of bacteria^{§*} on your floors

Kills/Eliminates/Removes 99.9% of household bacteria^{§*}

Kills/Eliminates/Removes 99.9% (of) *Staphylococcus aureus*/*S. aureus*

Kills/Eliminates/Removes 99.9% of bacteria^{§*} (on floors) that (traditional) mops can push (spread) around

Kills/Eliminates/Removes (99.9% of) bacteria^{§*} that mops can leave behind

Kills/Eliminates/Removes 99.9% of bacteria^{§*}

Kills/Eliminates/Removes 99.9% (of) *Escherichia coli*/*E. coli*

TriLambda AB antibacterial solution kills/eliminates 99.9% of the bacteria^{§*} on your floor(s).

Sanitizer

Sanitizing Cleaner

Used mops can grow (have/can contain) bacteria

With TriLambda AB antibacterial solution, 99.9% of the bacteria* on your floor are eliminated/killed.

<<SUPPORTING CLAIM QUALIFIERS – must appear on back label>>

<<Disinfection – Bacteria>>

§Limited Disinfectant. Kills *Salmonella enterica* (ATCC 10708) (on hard non-porous surfaces)

<<Sanitization – Bacteria>>

*kills *Klebsiella aerogenes* (ATCC 13048), *Staphylococcus aureus* (ATCC 6538) (on hard non-porous surfaces)

*kills *Klebsiella aerogenes* (ATCC 13048), *Staphylococcus aureus* (ATCC 6538), *Escherichia coli* (ATCC 11229) (on hard non-porous surfaces)

‡hard, non-porous

NOTE: Bracketed information is denoted as: << directive >>, (optional text), [optional text], {insert as noted}.
The term “this product” or “TriLambda AB” used throughout this document may be replaced with the marketed product brand name and may be followed by a© or ®. Qualifying symbols may be replaced with another symbol on the final printed label.
The product label must identify the specific bacteria.

<<INTRODUCTORY 6-MONTH CLAIMS>>

Fresh(er) (cleaner) (new) fragrance
Great (new) scent
New (and) (Improved) (better) formulation
New (and) (improved) spray nozzle (trigger) (sprayer)
New (insert fragrance name) (scent)
New look (for) (Febreze)
New size
Now with fresher (new) (longer lasting) fragrances
Smells (better) than ever (new fragrance)

<< Multi-Pack/Co-Pack Claims >>

<<Note to reviewer: Other claims from this Master Label may also be used on Multi-Packs/Co-Packs>>

[Mopping] Refill Pack
[Mopping] Kit
[Swiffer WetJet] [Heavy Duty] [Mopping] [Pads] For use with [official] [Swiffer] WetJet solution[s]
[Swiffer WetJet] [Heavy Duty] [Mopping] [Pads] For use with [official] [Swiffer] WetJet [Series 2] [mopping]
[system] [pads] [mop] [device]
[Swiffer WetJet] [Max] [Mopping] [Kit] [Refill Pack]
[Swiffer WetJet Max] [Heavy Duty] [Mopping] [Pads] For use with [official] [Swiffer] WetJet solution[s]
[Swiffer WetJet Max] [Heavy Duty] [Mopping] [Pads] For use with [official] [Swiffer] WetJet [Series 2]
[mopping] [system] [pads] [mop] [device]
[Swiffer WetJet] [XL] [Heavy Duty] Mopping Pads
[Swiffer WetJet Max] [XL] [Heavy Duty] Mopping Pads
[Washable] [Microfiber] [Reusable] Mopping Pad[s]
[Washable] [Microfiber] [Reusable] [Cleaning] Pad[s]
[WetJet] [pad[s]] With scrubby strip
Scrubby strip [breaks down tough dirt & grime]
Absorbent core [locks in liquid]
[With] [Swiffer WetJet] [Heavy Duty] [Mopping] [Pads]
Absorb & Lock [Strip] [Pad[s]]
[Pad[s]] Trap[s] dirt [+][and][&] mess[es] deep in[to][side] the pad
Traps dirt [+][and][&] grime deep inside the pad
Absorbs grime [and][&] leaves streak-free shine behind
Absorb + Lock[™]
Absorb + Lock[™] strip [traps dirt [+][&][and] grime]
Absorb + Lock[™] dirt and grime deep inside
Absorb + Lock[™] with scrubby strip

Do not flush [mopping pads] [down [the] toilet]
DO NOT FLUSH

<<Starter Kit Claims>>

<<Note to reviewer: Other claims from this Master Label may also be used on Starter Kits>>

[TriLambda][Product Name] [Starter] [Mopping] Kit
[Swiffer WetJet] [Starter] [Mopping] Kit
[Swiffer WetJet Max] [Starter] [Mopping] Kit
[Swiffer WetJet] [Series 2[.0]] Starter Kit [with] [Product Name] [Solution] [Floor Cleaner]
[Swiffer WetJet Max] [Series 2[.0]] Starter Kit [with] [Product Name] [Solution] [Floor Cleaner]
[Swiffer WetJet Max] [Power] [Mop] [Device] [Implement]
[Original] [Swiffer WetJet] [Mop] [Device] [Implement]
Mopping Kit

NOTE: Bracketed information is denoted as: << directive >>, (optional text), [optional text], {insert as noted}.
The term "this product" or "TriLambda AB" used throughout this document may be replaced with the marketed product brand name and may be followed by a© or ®. Qualifying symbols may be replaced with another symbol on the final printed label.
The product label must identify the specific bacteria.

[Contents] [Contains] [Includes][:]
1 Power Mop
X [Dry] Mopping Pads
[XX.X x XX.X cm (XX.X x XX.X IN)] [Each]
X Bottle[s] of [Product Name] Floor Cleaner
[XXX mL (X.X PT) XX.X FL OZ]
[XX Batter[y]][ies]]

Contains XX "AA" alkaline batter[y][ies]. Batteries must be recycled or disposed of properly.
<<Note to reviewer: X can designates a numerical value>>

Made in China
MADE IN CHINA
Assembled in China
ASSEMBLED IN CHINA

Power mop made in[:] China
Floor cleaner made in [:] [China] [USA] [*appropriate Country of Origin*] [from\of foreign and domestic materials]
Mopping pads assembled\made in [:] [*appropriate Country of Origin*]
Batter[y][ies] made in[:] [China] [*appropriate Country of Origin*]
From foreign and domestic [materials] [components] [ingredients]
From domestic and foreign [materials] [components] [ingredients]
From global [materials] [components] [ingredients]
Of foreign and domestic [materials] [components] [ingredients]
Of domestic and foreign [materials] [components] [ingredients]
Of global [materials] [components] [ingredients]

Easy-Change Battery Compartment
Flexible swivel head easily reaches under furniture and around corners
Dual nozzle delvers [cleaning] [disinfecting] [sanitizing] solution where you want it
Power button sprays [cleaning] [disinfecting] [sanitizing] solution on demand
Easy-prep power mop

Avoid exerting excessive pressure on the mop pole as breakage may occur[.]
[Avoid Accidents:] Keep [mopping pads] out of reach of children and pets to avoid accidental ingestion[.]

<<Warranty/Money Back Guarantee Claims>>

Satisfaction guaranteed or your money back via prepaid card†

†Mail original UPC and purchase receipt within 30 days of purchase. Prepaid card not redeemable as cash or usable at ATMs or gas pumps. Card expires 6 months from issuance. Limit 1 per name, household or address. Call 1-866-411-1753 for details.

†See top panel for more information.

NOTE: Bracketed information is denoted as: << directive >>, (optional text), [optional text], {insert as noted}.
The term "this product" or "TriLambda AB" used throughout this document may be replaced with the marketed product brand name and may be followed by a© or ®. Qualifying symbols may be replaced with another symbol on the final printed label.
The product label must identify the specific bacteria.

<<Optional Graphics: The below graphics are optional and may be presented as seen below or may differ slightly in graphic design but not intent on the market container label.>>

<<Product Logos>>



NOTE: Bracketed information is denoted as: << directive >>, (optional text), [optional text], {insert as noted}.
The term "this product" or "TriLambda AB" used throughout this document may be replaced with the marketed product brand name and may be followed by a© or ®. Qualifying symbols may be replaced with another symbol on the final printed label.
The product label must identify the specific bacteria.

<<FruitScent Graphics>>

<<Note to reviewer: Fruit/Scent icons may appear by themselves or in combinations>>



NOTE: Bracketed information is denoted as: << directive >>, (optional text), [optional text], {insert as noted}.
The term "this product" or "TriLambda AB" used throughout this document may be replaced with the marketed product brand name and may be followed by a© or ®. Qualifying symbols may be replaced with another symbol on the final printed label.
The product label must identify the specific bacteria.

<<Precautionary Graphics>>

<<Keep Out of Reach of Children/Pets>>



<<If in Eyes>>



DO NOT FLUSH

NOTE: Bracketed information is denoted as: << directive >>, (optional text), [optional text], {insert as noted}.
The term "this product" or "TriLambda AB" used throughout this document may be replaced with the marketed product brand name and may be followed by a© or ®. Qualifying symbols may be replaced with another symbol on the final printed label.
The product label must identify the specific bacteria.

<<Usage Icons/Graphics>>

<<Note to Reviewer: The below graphics are optional and may be presented as seen below or may differ slightly in graphic design but not intent on the market container label.>>

<<Step icons used in conjunction with the General Cleaning Directions for Use>>

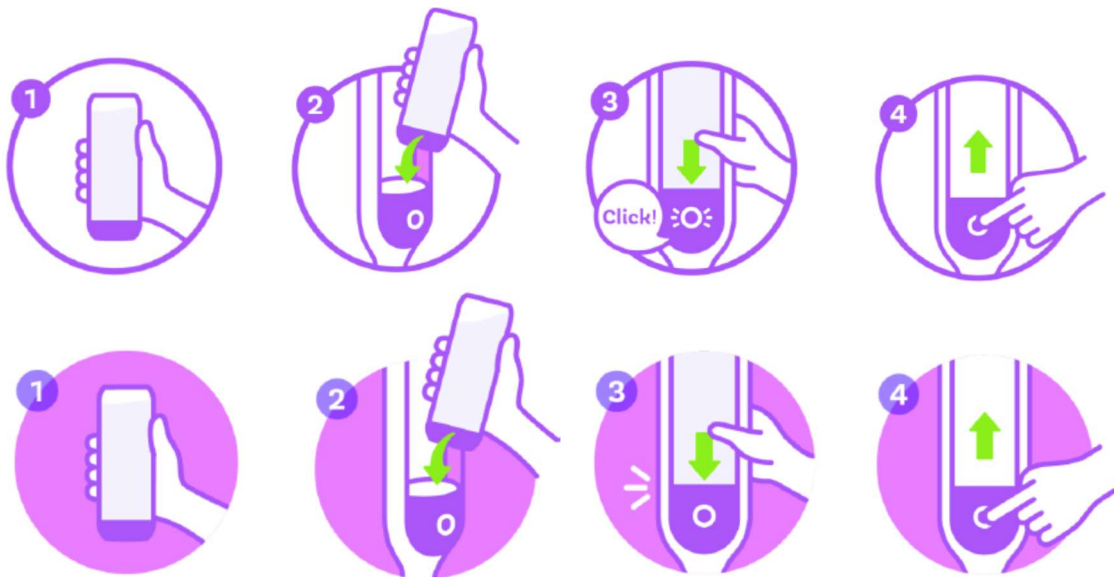


<<General Swiffer WetJet device assembly and device use instructions>>



<<Note to reviewer: The following copy may accompany the above graphics>>

- [1] CONNECT
- [2] INSERT BATTER[Y][IES]
- [3] ATTACH PAD STRIP DOWN
- [4] LOAD
- [5] SPRAY & CLEAN
- [6] REMOVE WHEN [DONE][DIRTY]



NOTE: Bracketed information is denoted as: << directive >>, (optional text), [optional text], {insert as noted}. The term "this product" or "TriLambda AB" used throughout this document may be replaced with the marketed product brand name and may be followed by a© or ®. Qualifying symbols may be replaced with another symbol on the final printed label. The product label must identify the specific bacteria.



<<Used in conjunction with a qualifier symbol and note>>



<<Used in conjunction with a qualifier symbol and note>>



NOTE: Bracketed information is denoted as: << directive >>, (optional text), [optional text], {insert as noted}.
The term "this product" or "TriLambda AB" used throughout this document may be replaced with the marketed product brand name and may be followed by a© or ®. Qualifying symbols may be replaced with another symbol on the final printed label.
The product label must identify the specific bacteria.

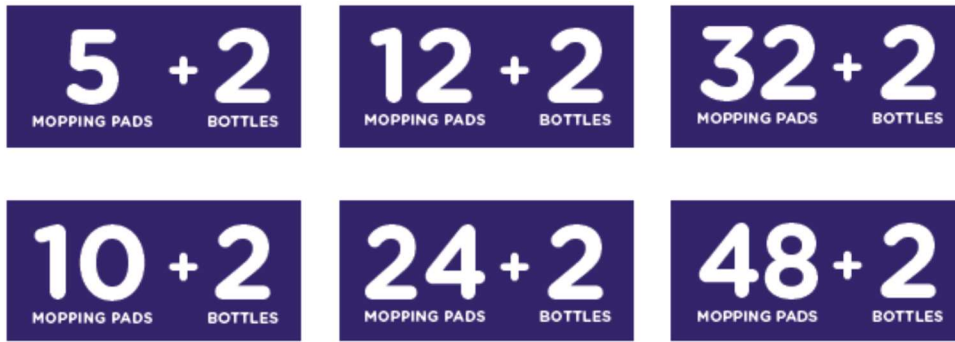
<<Marketing/General Graphics>>



NOTE: Bracketed information is denoted as: << directive >>, (optional text), [optional text], {insert as noted}.
The term "this product" or "TriLambda AB" used throughout this document may be replaced with the marketed product brand name and may be followed by a© or ®. Qualifying symbols may be replaced with another symbol on the final printed label.
The product label must identify the specific bacteria.

<<Icons for Co-Packs/Starter kits containing the dry mopping pads and/or mopping implement>>

<<Note to Reviewer: The numbers for mopping pads, bottles and/or batteries in the icons may vary>>

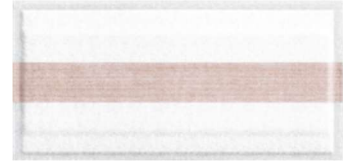
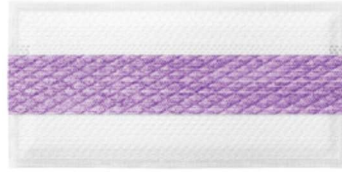
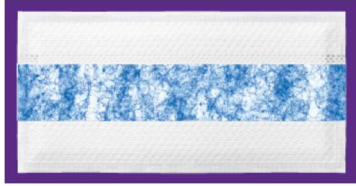


<<Other miscellaneous icons/graphics>>

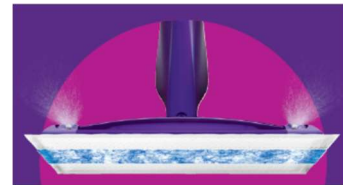
<<Note to Reviewer: The below graphics are optional and may be presented as seen below or may differ slightly in graphic design but not intent on the market container label.>>



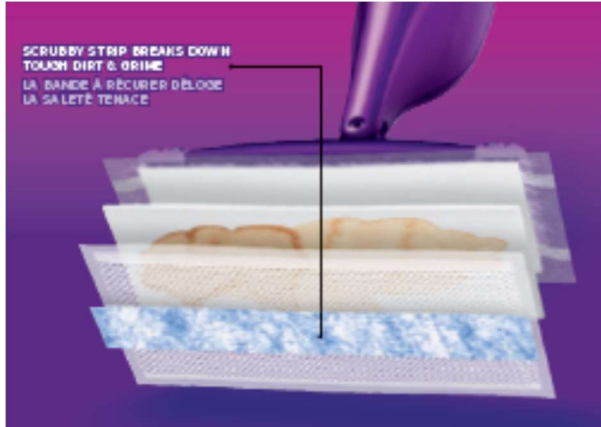
NOTE: Bracketed information is denoted as: << directive >>, (optional text), [optional text], {insert as noted}. The term "this product" or "TriLambda AB" used throughout this document may be replaced with the marketed product brand name and may be followed by a© or ®. Qualifying symbols may be replaced with another symbol on the final printed label. The product label must identify the specific bacteria.



<<Note to Reviewer: The below graphics are optional and may be presented as seen below or may differ slightly in graphic design but not intent on the market container label.>>



NOTE: Bracketed information is denoted as: << directive >>, (optional text), [optional text], {insert as noted}.
The term "this product" or "TriLambda AB" used throughout this document may be replaced with the marketed product brand name and may be followed by a© or ®. Qualifying symbols may be replaced with another symbol on the final printed label.
The product label must identify the specific bacteria.



NOTE: Bracketed information is denoted as: << directive >>, (optional text), [optional text], {insert as noted}.
The term “this product” or “TriLambda AB” used throughout this document may be replaced with the marketed product brand name and may be followed by a© or ®. Qualifying symbols may be replaced with another symbol on the final printed label.
The product label must identify the specific bacteria.

<<Recycling Graphics>>

{**Recycling logo:** The below graphics can be used to build a recycling logo. Any combination of top, middle, material, and bottom section can be used to build the logo. A recycling logo is optional and may be presented as seen below or may differ slightly in graphic design but not intent on the market container label.}

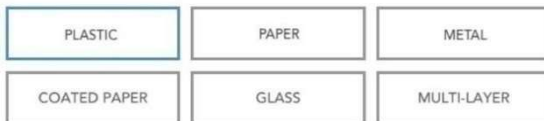
{TOP SECTION}



{MIDDLE SECTION}



{MATERIAL SECTION}



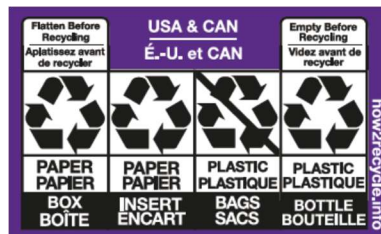
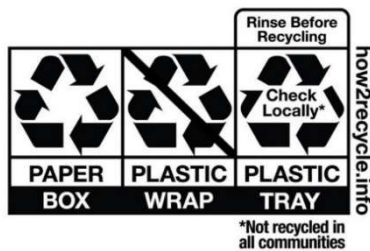
{BOTTOM SECTION}



{Optional text}

*Not recycled in all communities
 how2recycle.info

{Examples of Final Logos built from above sections}



NOTE: Bracketed information is denoted as: << directive >>, (optional text), [optional text], {insert as noted}.
 The term "this product" or "TriLambda AB" used throughout this document may be replaced with the marketed product brand name and may be followed by a© or ®. Qualifying symbols may be replaced with another symbol on the final printed label.
 The product label must identify the specific bacteria.