

DIRECTIONS FOR USE AND CONDITIONS OF SALE, WARRANTY AND LIMITATION OF DAMAGE PROVISIONS

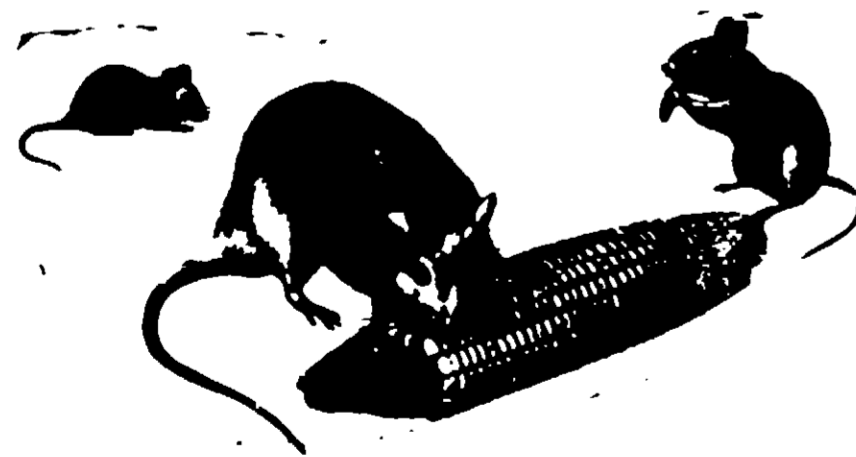
IMPORTANT: READ THE ENTIRE DIRECTIONS, CONDITIONS OF SALE, WARRANTY AND LIMITATION OF DAMAGE PROVISIONS BEFORE USING RYTE RAT-25.

CONDITIONS OF SALE: THESE DIRECTIONS FOR USE REFLECT THE OPINION OF EXPERTS BASED ON TESTS OF EFFECTIVENESS UNDER NORMAL CONDITIONS OF USE. HOWEVER, BECAUSE OF THE WIDE RANGE OF CONDITIONS UNDER WHICH THIS PRODUCT MAY BE USED, EVEN THOUGH LABEL DIRECTIONS ARE FOLLOWED, IT IS IMPOSSIBLE TO ELIMINATE ALL RISKS ASSOCIATED WITH ITS USE BECAUSE OF ABNORMAL CONDITIONS BEYOND THE CONTROL OF THE SELLER. B & G COMPANY AND THE SELLER OFFER, AND THE BUYER USES, THIS PRODUCT SUBJECT TO THE UNDERSTANDING THAT THE BUYER ASSUMES ALL SUCH RISKS.

WARRANTY AND LIMITATION OF DAMAGES: B & G COMPANY WARRANTS THAT THIS MATERIAL CONFORMS TO THE CHEMICAL DESCRIPTION ON THE LABEL AND IS REASONABLY FIT FOR THE PURPOSES REFERRED TO IN THE DIRECTIONS, CONDITIONS OF SALE; SUBJECT TO RISKS REFERRED TO THEREIN. B & G COMPANY MAKES NO OTHER EXPRESS OR IMPLIED WARRANTY OF FITNESS OR OF MERCHANTABILITY, OR ANY OTHER EXPRESS OR IMPLIED WARRANTY, AND NO AGENT OF B & G COMPANY IS AUTHORIZED TO DO SO EXCEPT IN WRITING, WITH A SPECIFIC REFERENCE TO THIS WARRANTY. IN NO CASE SHALL B & G COMPANY OR THE SELLER BE LIABLE FOR CONSEQUENTIAL, SPECIAL OR INDIRECT DAMAGES RESULTING FROM THE USE OR HANDLING OF THIS PRODUCT.

CAUTION: HARMFUL IF SWALLOWED BY HUMANS, DOMESTIC ANIMALS OR PETS. THIS MATERIAL REDUCES CLOTTING OF BLOOD AND CAUSES BLEEDING. INTRAVENOUS AND ORAL ADMINISTRATION OF VITAMIN K COMBINED WITH BLOOD TRANSFUSIONS MAY BE INDICATED, AS IN CASE OF HEMORRHAGE CAUSED BY OVERDOSES OF BISHYDROXYCOUMARIN.

CONTAINER DISPOSAL: DO NOT REUSE EMPTY CONTAINER. DESTROY IT BY PERFORATING OR CRUSHING. BURY OR DISCARD IN SAFE PLACE. DO NOT CONTAMINATE WATER BY CLEANING OF EQUIPMENT OR DISPOSAL OF WASTES.



RYTE RAT-25 CONTAINS AN ANTI-CCAGULANT CHEMICAL. ITS KILLING POWER DEPENDS ON IT BEING CONSUMED REGULARLY IN SMALL DOSES.

PROVEN! ECONOMICAL! EFFECTIVE!

NO PRE-BAITING INEXPENSIVE AND EASY TO USE

WRIGHT

RYTE RAT-25

contains 'FUMARIN'®

FOR CONTROL OF NORWAY, ROOF RATS & HOUSE MICE

- FARMS • HOMES • DAIRIES • POULTRY YARDS • WAREHOUSES
- GRAIN ELEVATORS • FEED MILLS • OUTBUILDINGS • DUMPS
- WHARFS • BOATS

ACTIVE INGREDIENTS:

3-(ALPHA-ACETONYLFURFURYL)-4-	
HYDROXYCOUMARIN#	0.025%
INERT INGREDIENTS:	99.975%
TOTAL	100.000%

® REGISTERED T.M. AMCHEM PRODUCTS, INC.

CAUTION: Keep Out of Reach of Children

SEE SIDE PANELS FOR ADDITIONAL CAUTIONS.

EPA REG. No. 3535-5

EPA Est. # 3535-TX-1

NET WEIGHT 50 POUNDS

LABEL # 4055

MANUFACTURED BY

WRIGHT

RODENT & PEST CONTROL LAB.

DALLAS, TEXAS 75220

FOR CONTROL OF NORWAY, ROOF RATS & HOUSE MICE

FOR CONTROL OF NORWAY, ROOF RATS & HOUSE MICE

FOR NORWAY AND ROOF RATS (1/2 TSP. BAIT PER 100 SQ. FT. EACH) AT EVERY POINT (1/2 TSP. BAIT PER SIGN AS GNAWINGS, TRACKS, OR DAMAGE). MAINTAIN AN UNINTERRUPTED SUPPLY FOR AT LEAST 10 DAYS.

FOR HOUSE MICE A LARGER NUMBER OF TABLESPOON EACH) SHOULD BE MADE & MAINTAIN AN UNINTERRUPTED SUPPLY DAYS.

KEEP FEEDING STATION

INSPECT AND REPLENISH EACH STATION AND REGULARLY THEREAFTER UNTIL BAITS ARE CONSUMED. NEVER ALLOW A FEEDING STATION TO BE EMPTY. IF BAIT BECOMES SOUR OR MOLDY DURING PERIODS OF HOT HUMID WEATHER, REPLACE AS NEEDED.

FOR RODENT CONTROL ON WHARFS,

SPECIAL PRECAUTIONS MUST BE TAKEN IN THESE WET AND HIGH HUMID USE AREAS. PROOF BAIT STATION IN A DRY PROTECTED AREA CAN FEED UNOBSERVED. INSPECT BAIT STATIONS AND REPLACE BAIT AS NEEDED.

FOR USE IN DUMPS OR AS PER

IN AREAS ABOVE AND OTHERS SUBJECT TO HIGH RODENT POPULATIONS, OBSERVE THE FEEDING STATION WHERE RODENTS FEED. SELECT WELL TRAVELED RUNWAYS AND SHELTER. SELECT WELL TRAVELED RUNWAYS TO FEED UNOBSERVED.

BAIT STATIONS MUST BE OF WEATHERPROOFED BAIT FROM MOISTURE. INSPECT STATIONS AND REPLACE BAIT IF MOLDY, SOUR OR IN

CAUTION

TREATED BAITS SHOULD BE PLACED IN PROTECTED BAIT BOXES. DO NOT CONTAMINATE EQUIPMENT, OR DISPOSAL OF WASTES. SPECIFIED ON THIS LABEL.

FISH AND/OR WILDLIFE

BIRDS FEEDING ON TREATED AREAS MAY BE HARMED. INMATE WATER BY CLEANING OF EQUIPMENT. APPLY THIS PRODUCT ONLY AS SPECIFIED

Handwritten note: Avoid 27 14 1975



RYTE RAT-25

contains **FUMARIN**

FOR CONTROL OF NORWAY, HOUSE RAT

FARMS • HOMES • DAIRIES • POULTRY YARDS • WAREHOUSES
GRAIN ELEVATORS • FEED MILLS • OUTBUILDINGS • DUMPS
WHARFS • BOATS

ACTIVE INGREDIENTS:

3-(ALPHA-ACETONYLFURFURYL)-4-HYDROXYCOUMARIN	0.025%
INERT INGREDIENTS	99.975%
TOTAL	100.000%

REGISTERED T.M. AMCHEM PRODUCTS, INC.

CAUTION: Keep Out of Reach of Children

SEE SIDE PANELS FOR ADDITIONAL CAUTIONS.

EPA REG. No. 3535-5
EPA EST. # 3535-TX-1

NET WEIGHT 50 POUNDS
LABEL # 4055

MANUFACTURED BY

WRIGHT

RODENT & PEST CONTROL LAB.
DALLAS, TEXAS 75220



FOR RODENT CONTROL ON WHARFS, BOATS AND POULTRY YARDS

PRECAUTIONS MUST BE TAKEN TO KEEP ROLIN BAIT DRY IN THESE WET AND HIGH HUMID USE AREAS. PLACE BAIT IN A WEATHER-PROOF BAIT STATION IN A DRY PROTECTED AREA WHERE RATS AND MICE CAN FEED UNOBSERVED. INSPECT BAIT AT BIWEEKLY INTERVALS AND CLEAN BAIT STATION AND REPLACE BAIT IF IT APPEARS MOLDY OR SOUR.

FOR USE IN DUMPS OR AS PERMANENT FIELD STATIONS

IN AREAS ABOVE AND OTHERS SUBJECTED TO HEAVY AND REOCCURRING RODENT POPULATIONS, OBSERVE THE FOLLOWING. ESTABLISH PERMANENT BAIT STATIONS WHERE RODENTS FEED, SEEK WATER, FOOD AND SHELTER. SELECT WELL TRAVELED RUNWAYS WHERE RODENTS CAN FEED UNOBSERVED.

BAIT STATIONS MUST BE OF WEATHERPROOF CONSTRUCTION TO PROTECT BAIT FROM MOISTURE. INSPECT STATIONS AT WEEKLY INTERVALS, REPLACE BAIT IF MOLDY, SOUR OR INFESTED WITH INSECTS.

CAUTIONS

TREATED BAITS SHOULD BE PLACED IN LOCATIONS NOT ACCESSIBLE TO CHILDREN, PETS, WILDLIFE AND DOMESTIC ANIMALS, OR IN TAMPER-PROOF BAIT BOXES. DO NOT CONTAMINATE WATER BY CLEANING OF EQUIPMENT, OR DISPOSAL OF WASTES. APPLY THIS PRODUCT ONLY AS SPECIFIED ON THIS LABEL.

FISH AND/OR WILDLIFE CAUTIONS

BIRDS FEEDING ON TREATED AREAS MAY BE KILLED. DO NOT CONTAMINATE WATER BY CLEANING OF EQUIPMENT, OR DISPOSAL OF WASTES. APPLY THIS PRODUCT ONLY AS SPECIFIED ON THIS LABEL.