

KILLS INSECTS

**DIRECTIONS**

For the control of Ants, Fire Ants, Army Worms, Red rust, Centipedes, Mosquitoes, Fleas, Ticks, Chinch Bugs, Crickets, Grasshoppers, and Mill Worms in LAWNS AND TURF, apply 3/4 lb. of 6% Chlordane dust evenly over each 1,000 sq. ft. of area to be treated and wet down dust into soil. Keep Children and Pets off treated areas until grass or soil is dry. Repeat weekly as long as infestation persists. For All Bugs dust heavily in and around entrances, ROACHES, ANTS, MILL WORMS, COCKROACHS, WATER BUGS, and SPIDERS may be kept from entering houses by treating underneath ~~the~~ and around perimeter walls using 3/4 # of Chlordane Dust per 100 sq. ft. Special attention should be given to openings through which bugs might

CONTINUED OTHER SIDE

**KILLS FOR WEEKS AND RESULTS GUARANTEED**

EPA Reg. No. 3509-60

Net Wt. 1 lb.



6%

# CHLORDANE

## MULTI-PURPOSE DUST

**CAUTION: KEEP OUT OF REACH OF CHILDREN**

**ACTIVE INGREDIENTS:**

Technical Chlordane*	. . . 6%
INERT INGREDIENTS	. . . . .94%
	100%

\*Equivalent to 3.6% octachloro 4,7-Methanotetrahydroindane and 2.4% related compounds.

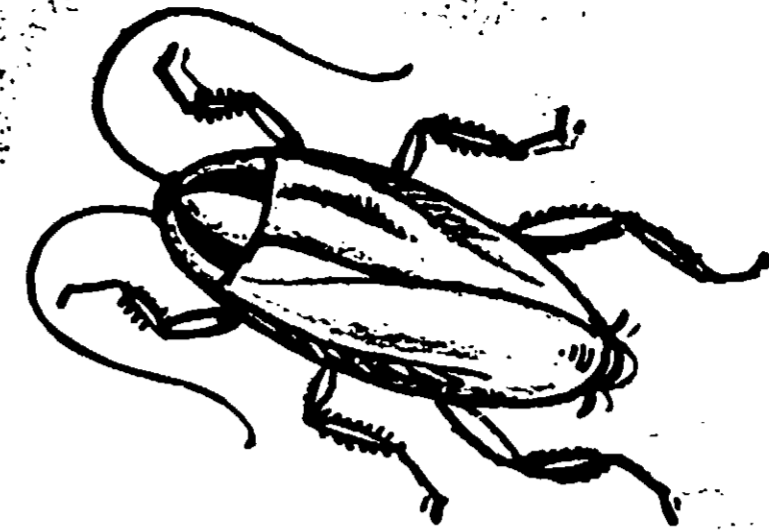
**SAFE WAY FARM PRODUCTS COMPANY**  
AUSTIN, TEXAS

**CAUTION**

Avoid contamination of Feed & Food stuffs.

Avoid inhalation of Dust.

**DO NOT USE ON CATS.**



DIRECTIONS

**DIRECTIONS**

such as spaces around pipes, vents, flues, etc. Normally two to three treatments per year will effect good control.

**GARAGES, DOG PENS, DOG HOUSES** and such buildings may be treated to control fleas and Brown Dog Ticks as follows: First remove all litter, bedding, and trash. The area should then be swept and treated lightly with 6% SAFE-WAY Brand Chlordane Dust. Extra treatment should be given to cracks, crevices, and areas where bugs hide. Replace old bedding with clean or new material.

Do not treat cats, cat quarters, or cat beds with Chlordane in any form.

**WARNING-**

This product is toxic to fish, birds, and other wildlife. Birds and other wildlife in treated areas may be killed. Keep out of lakes, streams, or ponds. Do not apply where runoff is likely to occur.

Eliminate water by cleaning of equipment, or disposal of wastes. Apply this product only as specified on this label.

Do Not reuse empty container. Destroy it by perforating or crushing. Bury or discard in a safe place away from water supplies.

3509-80



KILLS INSECTS



6%

# CHLORDANE

## MULTI-PURPOSE DUST

CAUTION: KEEP OUT OF REACH OF CHILDREN

ACTIVE INGREDIENTS:

Technical Chlordane*	6%
INERT INGREDIENTS	.94%
	100%

\*Equivalent to 3.6% octachloro 4,7-Methanotetrahydroindane and 2.4% related compounds.

SAFE WAY FARM PRODUCTS CO. AUSTIN, TEXAS

### CAUTION

Avoid contamination of Food & Food stuffs.

DO NOT USE ON CATS.



DIRECTIONS

### DIRECTIONS

crawl, such as spaces around pipes, vents, flues, etc. Normally two to three treatments per year will effect good control.

**GARAGES, DOG PENS, DOG HOUSES** and such buildings may be treated to control fleas and Brown Dog Ticks as follows: First remove all litter, bedding, and trash. The area should then be swept and treated lightly with 6% SAFE-WAY Brand Chlordane Dust. Extra treatment should be given to cracks, crevices, and areas where bugs hide. Replace old bedding with clean or new material.

Do not treat cats, cat quarters, or cat beds with Chlordane in any form.

This product is toxic to fish, birds, and other wildlife. Birds and other wildlife is treated areas should be avoided. Keep out of reach of children, animals, and not apply where birds or animals are present.

*[Faint, mostly illegible text, likely bleed-through from the reverse side of the page.]*

KILLS FOR WEEKS AND WEEKS — RESULTS GUARANTEED

FPA Reg.

Net Wt - 1 lb.

3509-80