

512

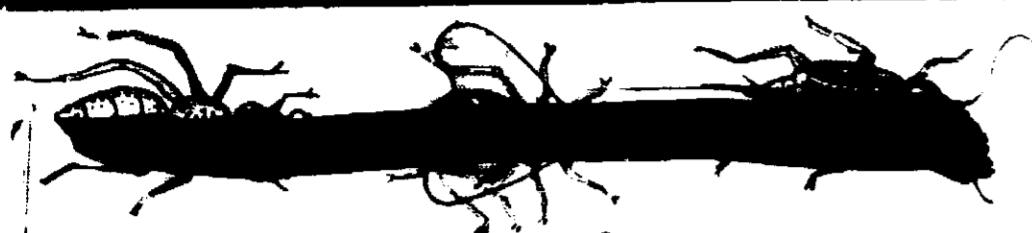
TS:

TS:

15  
172

ati

LABEL REGISTRATION DATA SHEET



**DIRECTIONS:**

For **ANIMAL BLDGS.** (Horse Barns, Dairy Barns, Shelter Sheds), **MILK SHEDS & OUTDOOR AREAS:** Mix 1 qt. of SAFE-WAY BRAND VAPOKILL with 12 1/2 gal. of water (5 1/3 Tbs. in 1 gal.) and apply as a coarse wet spray using 1 qt. of the diluted mixture to cover 1000 sq. ft. of surface. This will control **FLIES, GNATS, MOSQUITOES, ROACHES, ANTS, & SOWBUGS.** In **MILK SHEDS, STABLES, LIVESTOCK BARNs, LOAFING SHEDS, PIG PENS** use above mixture and spray around doorways, feed storage rooms, alleyways and window sills, taking care not to contaminate Milk or Milking utensils. For **POULTRY HOUSES** apply mixture to manure, window sills, outsides of pen enclosures, and on floor of feed storage rooms.

**OUTDOOR LIVING AREAS, PICNIC GROUNDS, BACK YARDS, PATIOS, LOADING DOCKS, OUTDOOR LATRINES, PARKING AREAS, GARBAGE CAN AREAS, DRIVE INS,** should be treated with the above mixture on all available surfaces, not in contact with food or foodstuffs. In treating **DOG KENNELS** for the control of **FLEAS** and **BROWN DOG TICKS** spray runways, window sills, and ledges using two quarts of the above mixture per 1000 sq. ft. For control of **FLY MAGGOTS** in maggot breeding areas such as garbage dumps apply mixture at rate of 1 or 2 qts. per 100 sq. ft.

**NOTE:** Before applying in enclosed areas, reduce air movement as much as possible by closing doors, windows, and other openings. Do not treat animals or humans. Do not contaminate water, feed or foodstuffs. Repeat treatments as necessary.

**WARNING:**

Vapokill concentrate is a powerful insecticide. Do not get on skin or eyes. Do not breathe fumes. Wear natural rubber gloves and goggles when handling the concentrate. Use a mask or respirator of type approved by the U. S. Dept. of Agriculture for DDVP protection. Keep all unprotected persons out of treated areas. Wash hands, face, and arms with soap and water before re-use.

**USDA Reg. # 3509-67**

2519 EAST 5TH STREET



**DANGER: Keep out of reach of children. See right side panel for antidote and other warnings.**



ACTIVE INGREDIENTS	BY WEIGHT	%*
2,2-dichlorovinyl dimethyl phosphate	22.0*	%*
Related Compounds	1.7*	%
Petroleum Hydrocarbons	71.3*	1%
<b>INERT INGREDIENTS</b>	<b>5.0</b>	<b>10%</b>

TOTAL 100.00%  
CONTENTS: 1 PINT

**SAFE-WAY FARM PRODUCTS CO.**

**WARNING:**

Vapokill is poisonous if swallowed inhaled, or absorbed through the skin or eyes. Do not get on skin or in eyes. Do not breathe fumes wear clean rubber gloves and face shield or goggles when handling concentrate. Keep all unprotected persons out of operating areas. For prolonged exposure wear a mask or respirator of type passed by US Dept. of Agriculture for DDVP protection. In case of contact, wash immediately with soap and water. Wash hands, face, and arms with soap and water before eating or smoking. Wash all contaminated clothing with soap and water before re-use.

**ANTIDOTE:** Atropine is the emergency antidote for Vapokill (DDVP) poisoning. Call physician immediately in all cases of suspected poisoning. **FIRST AID:** Internal, if material has been swallowed induce vomiting by administering teaspoonfull of salt dissolved in glass of warm water. Never give anything by mouth to unconscious patients. External, if spilled on skin, immediately remove all contaminated clothing, wash with soap and running water. In case of eyes wash immediately with running water for at least 10 min.

**CAUTION:** This product is not for use in homes. This product is toxic to fish. Keep out of ponds, streams & lakes. Empty containers should be thoroughly washed and destroyed to preclude re-use. Spray wastes should be sprayed out on open ground away from habitants

Submitted by:

512/ 478-2554

TS:

1.50 = 0.50  
1.50 = 1.50

Submitted by:

Product Name:

Label Registration Data Sheet



**DIRECTIONS:**

For ANIMAL BLDGS. (Horse Barns, Dairy Barns, Shelter Houses, MILK SHEDS & OUTDOOR AREAS: Mix 1 qt. of SAFE-WAY BRAND VAPOKILL with 12½ gal. of water (5½ Tps. in 1 gal.) and apply as a coarse wet spray using 1 qt. of the diluted mixture per 1000 sq. ft. of surface. This will control FLIES, GNATS, MOSQUITOES, ROACHES, ANTS, & SOWBUGS. In MILK SHEDS, STABLES, LIVESTOCK BARNs, LOAFING SHEDS, PIG PENS use above mixture and spray around doorways, feed storage rooms, alleyways and window sills, taking care not to contaminate Milk or Milking utensils. For POULTRY HOUSES apply mixture to manure, window sills, outside of pen enclosures, and on floor of broiler storage rooms.

OUTDOOR LIVING AREAS, PICNIC GROUNDS, BACK YARDS, PATIOS, LOADING DOCKS, OUTDOOR LATRINES, PARKING AREAS, GARBAGE CAN AREAS, DRIVE INS, etc., can be treated with the above mixture on all available surfaces, not in contact with food or foodstuffs. In treating DOG KENNELS for the control of FLEAS and BROWN DOG TICKS spray runways, window sills and ledges using two quarts of the above mixture per 1000 sq. ft. For control of FLY MAGGOTS in maggot breeding areas such as garbage dumps apply mixture at rate of 1 or 2 qts. per 100 sq. ft.

**NOTE:** Before applying in enclosed areas, reduce air movement as much as possible by closing doors, windows, and other openings. Do not treat animals or humans. Do not contaminate water, feed, or foodstuffs. Repeat treatments as necessary.

**WARNING:**

Vaporize insecticide concentrate... get on skin or eyes. Do not breathe... exposure to fumes. Wear natural rubber... and goggles when using the concentrate. Prepare... mask or respirator... the U. S. Dept. of Agriculture... keep all unprotected persons... Wash hands, arms, and face with soap and hot water before reuse.

USDA Reg. # 3509-67



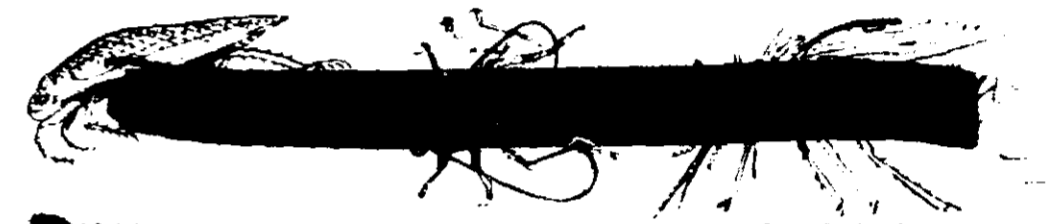
**DANGER:** Keep out of reach of children. See right side panel for antidote and other warnings.



ACTIVE INGREDIENTS	BY WEIGHT	%*
2,2 dichlorovinyl dimethyl phosphate	22.0%	%*
Related Compounds	1.7%	%
Petroleum Hydrocarbons	71.3%	1%
INERT INGREDIENTS	5.0%	10%

TOTAL CONTENTS: 1 PINT 100.00%

for use in homes. This product is toxic to fish, keep out of ponds, streams & lakes. Empty containers should be thoroughly washed and destroyed to preclude re-use. Spray wastes should be sprayed on open ground away from habitations.



**ANTIDOTE AND FIRST AID TREATMENT**

ATROPINE is the emergency antidote for VAPOKILL. Consult your physician about obtaining adequate supply of 1/100 grain atropine tablets for emergency use. **ALL PHYSICIAN IMMEDIATELY IN ALL CASES OF POISON EXPECTED REASONING.**

**INTERNAL:** If the material has been swallowed induce vomiting immediately. This may be done by introducing a finger into the throat or by giving warm salt water (1/2 spoon of salt per glass of water). NEVER GIVE ANYTHING BY MOUTH TO AN UNCONSCIOUS PERSON.

**EXTERNAL:** If material is spilled on the skin immediately remove the contaminated clothing, remove contaminated clothing, wash with soap and water. If material gets into eyes, wash immediately with running water for at least ten minutes.

**WARNING SYMPTOMS:** If you experience any of the following symptoms, administer two 1/100-grain tablets immediately. See WARNING SYMPTOMS AND ANTIDOTE.

**PRECAUTIONS IN USING:** VAPOKILL concentrate and the diluted emulsion are highly toxic. Extreme care must be observed in handling. See label and directions below. Children or animals must not be allowed to play with the concentrate or diluted emulsion. It should be stored in a secure place. Do not use diluted emulsion in areas where it will be used immediately. Mix concentrate with water in a well ventilated area. Wash hands thoroughly with soap and water before storing away. Do not contaminate feed, water or foodstuffs.

2519 EAST 5TH STREET

**SAFE-WAY FARM PRODUCTS CO.**

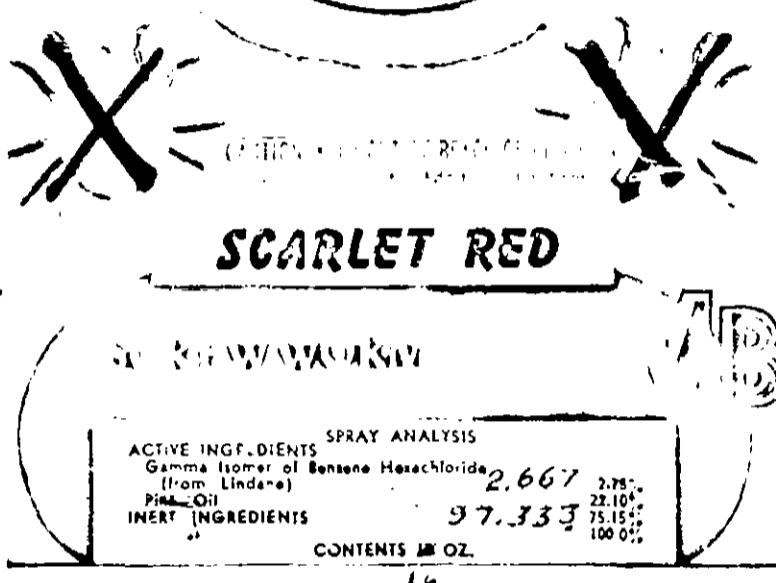
AUSTIN, TEXAS

~~SAFETY~~  
~~BRAND~~

CONTAINS LINDANE

CONTAINS LINDANE

Harmful if swallowed. May be absorbed through the skin. Avoid breathing of spray mist. Avoid contamination of hands in using. Wash with soap and water after using. Do not use on Dairy animals. Do not use where there is need for any wound. Use extra care in treating wounds on newborn calves, regardless of location of wound, as they are highly susceptible to lindane. Navels of newborn calves may be treated no more than 3 seconds of spraying in any one day. Do not use in or around eyes. Avoid contamination of feed or feedstuffs. Do not spray near or toward open flame.



ACTIVE INGREDIENTS		SPRAY ANALYSIS	
Gamma Isomer of Benzene Hexachloride (from Lindane)	2.667	2.75%	22.10%
Pine Oil	97.333	75.15%	100.00%
INERT INGREDIENTS			
CONTENTS 16 OZ.			

Store bomb in cool dry place. Do not expose to temperature above 135° F. Do not puncture can. Do not heat or dispose of can by burning.

MADE IN U.S.A. 6509

SAFEMAN FARM PRODUCTS CO