

1975
 Act.
 EPA Reg. No. 3314-33

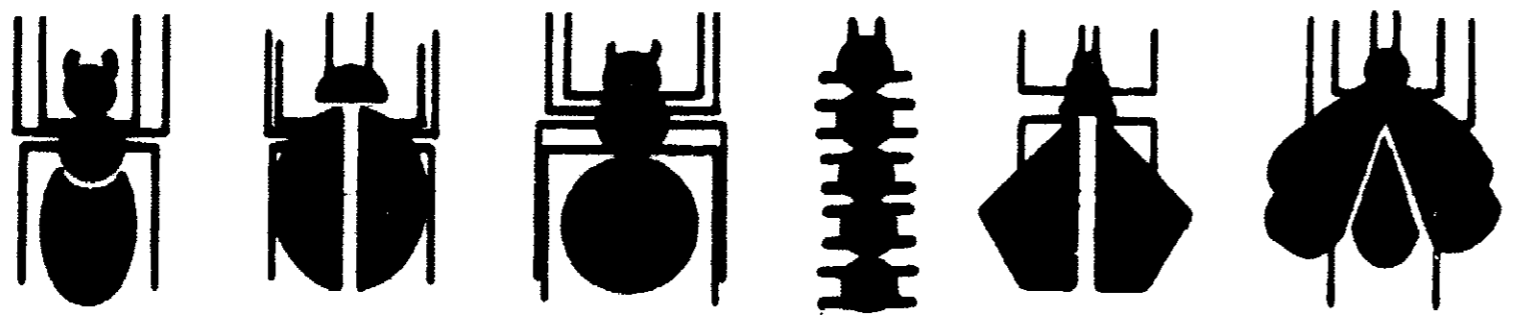


SWEET KILL

DRY FLY BAIT

For the control of flies around Dairy Barns, Horse Barns - Stock Barns - Pig Pens - Kennels - Outdoor Living Areas - Milk Sheds - Food Processing Plants.

ACTIVE INGREDIENTS:	BY WT.
2,2-Dichlorovinyl dimethyl phosphate	.46%*
Related Compounds	.04%*
INERT INGREDIENTS	<u>99.50%</u>
TOTAL	100.00%



DIRECTIONS

DAIRY BARNs, MILK SHEDs, STABLEs, LIVESTOCK BARNs, LOAFING SHEDs, PIG PENS, AND OUTDOOR AREAs: Scatter dry bait at the rate of 1-4 lb. per 1,000 sq. ft. on floor or ground areas where flies congregate. Ideal baiting sites are around doorways, feed storage rooms, alleyways, and window sills. On freshly limed floors, place treatment on feed sacks or on paper. Repeat procedure as necessary for practical fly control.

CAGED POULTRY AND TURKEYS ON WIRE: Scatter dry bait at the rate of 1-4 lb. per 100 sq. ft. on droppings beneath cages or perches. Repeat at weekly intervals.

POULTRY HOUSEs: Scatter CP dry bait at the rate of 1-4 lb. bait per 1,000 sq. ft. of area where flies congregate, but keep out of reach of birds. Apply to manure, on window sills, outside of penned enclosures and on floor of feed storage room. Repeat as necessary.

DOG KENNELs: Scatter CP dry bait at the rate of 1-4 lb. per 1,000 sq. ft. outside dog runways, on window sills, ledges and other surfaces out of reach of animals. For caged units, apply to dropping area. Repeat as necessary.

FOOD PROCESSING PLANTs: For control of resistant or non-resistant house flies around the outside premises of food processing plants, use 1-4 lb. per 500 sq. ft. of fly breeding area. Scatter on areas where flies congregate.

GARBAGE CANS: Apply bait around and inside garbage can. Repeat as necessary.

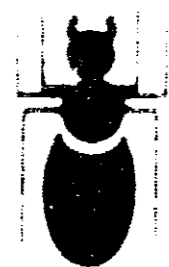
FOR REDUCING POPULATIONS OF RESISTANT AND NON-RESISTANT HOUSE-FLIES IN AND AROUND OUTDOOR LIVING AREAs, PICNIC GROUNDS, BACKYARD AREAs, PATIOS, LOADING DOCKs, AND OUTDOOR LATRINES, PARKING AREAs, REFUSE AREAs AROUND SERVICE STATIONS, OPEN AIR DRIVE-INS, ICE CREAM STANDs, GARBAGE COLLECTION AND DISPOSAL AREAs: Use CP dry bait at 1/2 lb. per 1,000 sq. ft. of area. Apply on ground or areas where flies congregate. For open-air drive-ins, ice cream stands and restaurants, apply on apron between serving counter and parking area, paying particular attention to trash barrels and garbage cans where flies congregate.



E.P.A. Reg. No. 3314-33
 E.P.A. Est. No. 3314-FL-1

Manufactured for
COLONIAL PRODUCTS, INC.
 1830 Tenth Avenue North
 Lake Worth, Fla. 33460

Manufactured for
COLONIAL PRODUCTS, INC.
1000 Avenue North
Tomball, Texas 77480



*Equivalent to 0.5% of Vapona® Insecticide
*Trademark of Shell Chemical Co.

CAUTION
KEEP OUT OF REACH OF CHILDREN

See Additional Precautions on Back Panel

DO NOT REUSE EMPTY CONTAINER.
DESTROY WHEN EMPTY.

NET WEIGHT 19 OZS. APPROX.

FLIES IN AND AROUND OUTDOOR LIVING AREAS, PICNIC GROUNDS, BACKYARD AREAS, PATIOS, LOADING DOCKS, AND OUTDOOR PATRIOT PARKING AREAS, REFUSE AREAS AROUND SERVICE STATIONS, OPEN A-DRIVE INS, ICE CREAM STANDS, GARBAGE COLLECTION AND DISPOSAL AREAS.

Do not contaminate milk, milk handling equipment, feed or drinking water.

CAUTION

HARMFUL IF SWALLOWED, INHALED, OR ABSORBED THROUGH THE SKIN. Wash thoroughly with soap and water after handling and before eating or smoking. Do not contaminate feed, water or foodstuffs. Keep out of reach of children. If swallowed, induce vomiting immediately and get medical attention. NOTE TO PHYSICIAN: ATROPINE IS ANTIDOTAL.

This product is toxic to fish, wildlife and birds. Keep out of any body of water. Do not apply where runoff is likely to occur. Do not contaminate water by cleaning of equipment or disposal of wastes.

NOTICE OF WARRANTY

COLONIAL PRODUCTS, INC. MAKES NO WARRANTY OF MERCHANTABILITY, FITNESS FOR ANY PURPOSE, OR OTHERWISE, EXPRESS OR IMPLIED, concerning this product or its use, which extend beyond the statements on this label.