

DIRECTIONS

For Use Against Certain Insects Infesting Dairy Cattle, Livestock, Barns, Warehouses, etc.

FOR SPRAYING OR DIPPING BEEF CATTLE, SHEEP, GOATS AND DAIRY ANIMALS (except mature dairy animals; may be used on young dairy animals up to two weeks of freshening) for Horn Flies, Fleas and Lice. Use 2 lbs. per 25 gallons of water. Pressure should be strong enough to part the animal's hair and wet the skin. Approximately 2 quarts of spray are needed to treat a mature animal. One treatment will be effective up to 3 weeks under average conditions. For control of tail louse of cattle, use 4 lbs. in 25 gallons of water and apply as a spray on the infested tail only. Applications should be repeated as necessary. For direct dusting of Dairy Cattle see below. **DO NOT** apply to lactating dairy animals as a spray or dip. **DO NOT** dip calves under one month of age.

FOR DIRECT DUSTING: MATURE DAIRY CATTLE — Use one rounded tablespoonful per animal. Sprinkle on poll, neck (top and sides) and back and upper sides; rub in lightly by hand using non-porous gloves, to carry powder beneath the hair. One treatment protects cattle against horn flies for about 3 weeks. Allow 3 weeks between treatments.

SHEEP AND GOATS — For lice and keds dust animals thoroughly; rub in lightly using non-porous gloves, to carry powder beneath the hair. Application on sheep, following shearing, gives temporary relief from sheep ticks (keds). **DO NOT** apply to lactating goats.

FOR SPRAYING INTERIORS OF BARN, WAREHOUSES, FOOD PROCESSING PLANTS AND PREMISES for House Flies, Stable Flies and Mosquitoes: Use 2 lbs. per 5 gallons of water. Spray and thoroughly wet walls, ceilings, stalls, screens and other places where flies congregate, such as manure piles and rubbish heaps. Applications should be repeated as control diminishes or at first noticeable increase in fly population. Protection for a period up to 4 to 6 weeks may be attained. Cover securely all milk handling equipment, feedstuffs, troughs, bins, or other food and water receptacles while spraying; dairy animals should not be present while spraying. **DO NOT** apply in the edible products areas of food processing plants. Do Not use in poultry houses.

AMOUNT OF SPRAY REQUIRED: Depending on whether surface is smooth or rough, one gallon of finished spray will cover from 600 to 1000 square feet. Surfaces should be wet with spray to the point where it begins to run off.

3 EMPTY GRAIN BINS: As an aid for control of Rice Weevil, Granary Weevil, Lesser Grain Borer and certain other insect pests of stored grain, during accessible or exposed stages; and as a treatment to help prevent infestation of newly stored grain, apply 4 lbs. mixed with 9 gallons of water. Make application to thoroughly cleaned surfaces at the rate of 2 gallons of spray mixture per 1000 square feet. Allow sprayed surface to dry before storing grain.

FOR SPRAYING AGRICULTURAL CROPS, FORAGE AND FIELD CROPS, FRUITS AND VEGETABLES. Apply Metox "50" at recommended rates as a spray with ground or aerial equipment to thoroughly cover foliage and fruit. Mix Metox "50" in water using the appropriate volume of water for equipment to be used (for example, 5 to 20 gals. per acre for aircraft or ground concentrate sprayers and greater amounts for high volume sprayers). Continuous agitation is required to keep the material in suspension. For small areas, use 2 tablespoonfuls Metox "50" per gallon of water and apply as a thorough coverage spray.

Begin application at first sign of infestation (for fruits, begin at petal fall) and repeat at 7- to 14-day intervals or as needed. Do not apply to crops within the number of days specified before harvest or grazing as shown by pre-harvest limitation.

FORAGE AND FIELD CROPS: ALFALFA, CLOVER, COWPEA, FORAGE GRASSES — Alfalfa Caterpillar, Alfalfa Weevil (larvae), Clover Leaf Weevil, Blister Beetles, Leafhoppers, Cucumber Beetles, Mexican Bean Beetle, Webworms, Armyworm, Fall Armyworm, Cowpea Curculion, Flea Beetles, Japanese Beetle, Pea Weevil, Spittlebugs, Velvet Bean Caterpillar. 2 to 6 lbs. per acre use a minimum of 3 lbs. per acre for Armyworms. Pre-harvest limitation 7 days.

PEANUT SOYBEAN — Velvet Bean Caterpillar, Mexican Bean Beetle, Japanese Beetle, Blister Beetles, Garden Webworm, Alfalfa Webworm, Cowpea Curculion, Leafhoppers, Fall Armyworm. 2 to 6 lbs. per acre. Pre-harvest limitation 7 days.

FRUITS: APPLE, PEAR, QUINCE — Apple Maggot, Coddling Moth, Japanese Beetle, Plum Curculion, Tent Caterpillar. 7 1/2 to 15 lbs. per acre or 2 to 3 lbs. per 100 gals. water at 350 to 500 gals. per acre. Pre-harvest limitation 7 days.

APRICOT, CHERRY, NECTARINE, PEACH, PLUM, PRUNE — Cherry Fruitworm, Cherry Fruitflies, Japanese Beetle, Plum Curculion, Rose Chafer, Tent Caterpillar, Cankerworms. 7 1/2 to 15 lbs. per acre, or 2 to 3 lbs. per 100 gals. water at 350 to 500 gals. per acre. Pre-harvest limitation 7 days for cherries, plums, prunes; 21 days for apricots, nectarines, peaches.

BLUEBERRY, CRANBERRY, CURRANT, GOOSEBERRY — Japanese Beetle, Cranberry Fruitworm, Leafhoppers, San Jose Scale (crawlers). 2 to 6 lbs. per acre, or 2 to 3 lbs. per 100 gals. water at 100 to 200 gals. per acre. Pre-harvest limitation 14 days.

BLACKBERRY, LOGANBERRY, RASPBERRY, BOYSENBERRY, DEWBERRY, YOUNGBERRY, STRAWBERRY — Rose Chafer, Strawberry Weevil, Flea Beetles, Cannivorous Leaf Tier, Spittlebugs, Japanese Beetle. 2 to 3 lbs. per acre, or per 100 gals. per acre. Pre-harvest limitation 14 days.

GRAPE — Berry Moth, Grape Leafhopper, Japanese Beetle, Leaf Skeletonizer, Rose Chafer. 2 to 6 lbs. per acre or 2 to 3 lbs. per 100 gals. water at 100 to 200 gals. per acre. Pre-harvest limitation 14 days.

VEGETABLES: ASPARAGUS — Asparagus Beetles. 2 to 4 1/2 lbs. per acre. Pre-harvest limitation: If applied within 3 days of harvest, remove residues by washing or blanching. **BEANS, BLACK-EYED PEAS** — Corn Earworm, Cucumber Beetles, Fall Armyworms, Alfalfa and Garden Webworms, Flea Beetles, Mexican Bean Beetle, Potato Leafhopper, Bean Leaf Beetle, Japanese Beetle. 2 to 6 lbs. per acre. Pre-harvest limitation: 7 days; apply within 3 days of harvest if vines are not used for feed or forage.

BRUSSELS SPROUTS, BEETS, BROCCOLI, CABBAGE, CARROTS, CAULIFLOWER, COLLARD, EGGPLANT, KALE, KOHLRABI, LETTUCE, PEPPER, RADISH, RUTABAGA, SPINACH, TURNIP — Blister Beetles, Flea Beetles, Leafhoppers, Alfalfa Looper, Fall Armyworm, Japanese Beetle, Imported Cabbageworm. 2 to 4 1/2 lbs. per acre. Pre-harvest limitation: 14 days, except Cauliflower and Rutabaga, 7 days; Cabbage, 3 days; Eggplant, Kohlrabi, and Pepper, 7 days (1 day at 3 1/2 lbs. per acre or less).

CORN — Fall Armyworm, Armyworm, Japanese Beetle, Flea Beetles. 2 to 4 1/2 lbs. per acre. Pre-harvest limitation: 7 days.

CUCUMBER, MELONS, PUMPKIN, SQUASH, SUMMER SQUASH — Squash Vine Borer, Fall Armyworm, Cucumber Beetles, Flea Beetles. 2 to 6 lbs. per acre. Pre-harvest limitation: 1 day for rates of 3 1/2 lbs. per acre and below; otherwise, 7 days.

PEAS — Alfalfa Looper, Pea Weevils (to foliage early bloom before eggs are laid and again 5 days later), Bean Leaf Beetle. 2 to 6 lbs. per acre. Pre-harvest limitation: 7 days.

POTATO (IRISH) — Colorado Potato Beetle, Flea Beetles, Fall Armyworm, Leafhoppers, Blister Beetles. 2 to 4 1/2 lbs. per acre. Pre-harvest limitation: None.

SWEET POTATO, YAM — Fall Armyworm, Flea Beetles. 2 to 4 1/2 lbs. per acre. Pre-harvest limitation: None.

TOMATO — Colorado Potato Beetle, Flea Beetles, Fall Armyworm, Leafhoppers, Blister Beetles. 2 to 6 lbs. per acre. Pre-harvest limitation: 1 day for rates of 3 1/2 lbs. and below; otherwise, 7 days.

NOTE: Do Not use more than the following amounts of this material per acre per application. Grapes, blueberries, cranberries, currants, gooseberries, alfalfa, clover, and pasture grasses 6 lbs.; potatoes and sweet corn 4 1/2 lbs.; blackberries, raspberries, strawberries, melons, tomatoes, beans, cucumbers, pumpkins, and squash 3 1/2 lbs.; apples and pears 36 lbs.; apricots, cherries, peaches, plums, prunes 24 lbs.

Removes residues remaining at harvest by washing, brushing, or other effective means.

COMPATIBILITY: 50% Methoxychlor Wettable Powder is compatible with most commonly used fungicides and insecticides (such as wettable and dusting sulfurs, Parathion, Ferbam, Ziram, Nabam, Zineb, Bordeaux Mixture, Lead Arsenate, "340" Spraycopr and "530" Spraycopr).

MIXING: Pour into the tank of a power sprayer with the agitator running. Keep agitator running while spraying. Where small sprayers are used, the material should be kept mixed by frequent shaking or rolling of the sprayer. One tablespoonful per gallon is equivalent to one pound per 100 gallons.



Under the Federal Insecticide, Fungicide, and Rodenticide Act, as amended, for the pest(s) registered under § 24, for use EPA Reg.

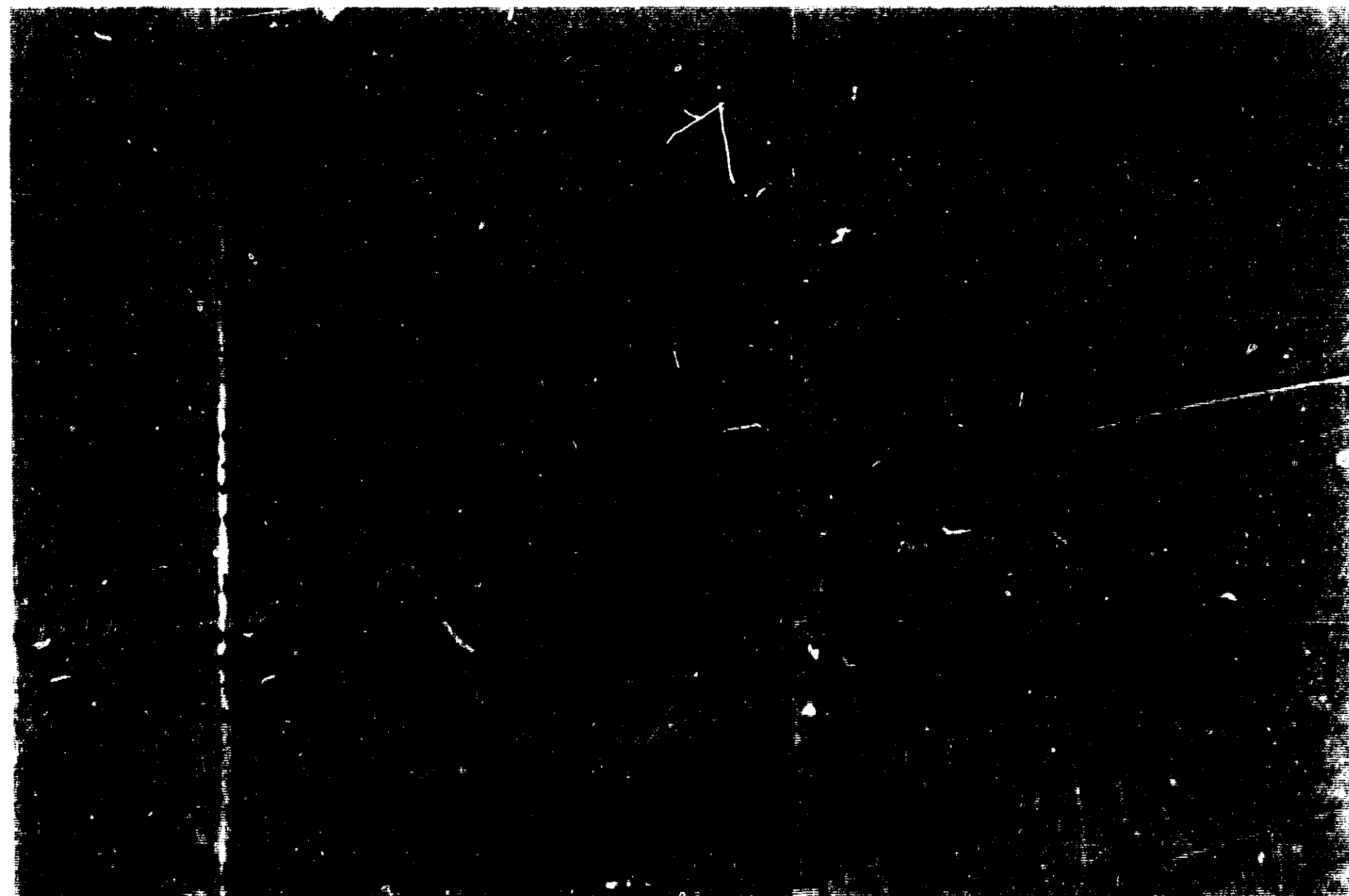
ONE POUND

METOX "50"

(50% WETTABLE METHOXYCHLOR POWDER)

For Certain Insect Pests of Livestock, Forage Crops, Fruits, Vegetables, and Stored Grain

INSECTICIDE



ONE POUND METOX "50"

(50% WETTABLE METHOXYCHLOR POWDER)
For Certain Insect Pests of Livestock, Forage Crops, Fruits, Vegetables
and Stored Grain

INSECTICIDE

ACTIVE INGREDIENTS:

*Methoxychlor, technical . . . 50%

INERT INGREDIENTS 50%

TOTAL 100%

*50% Methoxychlor, Technical is equivalent to 44% 2,2-bis(p-methoxyphenyl)-1,1,1-trichloroethane and 6% other isomers and reaction products.

CAUTION

KEEP OUT OF REACH OF CHILDREN

Avoid contamination of feed and foodstuffs. Avoid inhalation of sprays and dusts. Wash thoroughly after handling.

This product is toxic to fish. Keep out of lakes, streams, or ponds. Do not apply where runoff is likely to occur. Do not apply when weather conditions favor drift from areas treated. Do not contaminate water by cleaning of equipment or disposal of wastes. Apply this product only as specified on this label.

This product is toxic to bees and should not be applied when bees are actively visiting the area.

DO NOT RE-USE CONTAINER

Destroy by burying or burning. Keep out of smoke or fumes.

Use this product only in accordance with recommendations on this package. Follow directions carefully. Timing and method of application, weather and crop conditions, mixtures with other chemicals not specifically recommended, and other influencing factors in the use of this product are beyond the control of the seller. Buyer assumes all risks of use, storage or handling of this material not in strict accordance with directions given herewith.

MANUFACTURED FOR

THE FERD STAFFEL COMPANY

SAN ANTONIO, TEXAS 78298

EPA Reg. No. 3286-10