

DIRECTIONS FOR USE — READ ENTIRE LABEL

Add Staffel's 56% Malathion Emulsifiable concentrate to water at the Chart Rate and mix, to form a white milky emulsion. For foliage difficult to wet add a suitable spreader-sticker at the recommended rate. APPLICATION — Use a pressure spray and thoroughly spray entire plant. Be sure to COVER UNDERSIDE OF LEAVES.

PLANT	PEST	Per Gal. Water	Per 100 Gal	Interval Last Appl. to Harvest
ORNA-MENTALS	Lace bugs, Euonymus Scale, Scurfy scale, Azalea Scale, Pine Leaf Scale, Magnolia Scale; Fletcher, Florida Red, Juniper, Monterey Pine, Soft, Pine Needle, and Wax Scale. Black Scale Crawlers.	4 Tsp	4 Pts	
Flowers Vines Shrubs	Aphids, Mealybugs, Spider Mites, Whitefly, Four-lined Leaf Bug, Japanese beetle adult, Potato Leafhopper, Tarnished Plant Bug, Thrips, Rose Leafhopper, European Pine Shoot Moth, Leaf Miner, Bagworms, Tent Caterpillar.	2 Tsp	2 Pts	
VEGETABLES	Mexican Bean Beetle, Leafhoppers, Spider Mites, Japanese Beetle, Aphids, Cucumber Beetle.	2 Tsp	2 Pts	1 Day
Tomatoes	Spider Mites, Aphids.	1 1/2 Pts.	2 Pts	1 Day
Lettuce Leaf Head	Leafhoppers, Aphids, Mites.	2 Tsp	2 Pts	14 Days 7 Days
TREE FRUITS	Oriental Fruit Moth, Plum Curculio, Aphids, Japanese Beetles, Terrapin and Cottony Peach Scale.	2 Tsp	2 Pts	7 Days
Peaches	Apply at petal fall and every 10 to 14 days thereafter until control is achieved.			
Pears	Mealybugs, Mites, Pear Psylla, Coddling Moth, Plum Curculio. Apply at petal fall and every 10 to 14 days thereafter until control is achieved.	2 Tsp	2 Pts	1 Day

CAUTION

Avoid breathing of spray mist. Avoid contact with skin. Wash thoroughly after handling. Do not contaminate food or feed products. Keep container closed and away from heat, sparks and open flame. Highly toxic to fish. Do not contaminate any body of water by direct application, cleaning of equipment or disposal of wastes of containers. This product is highly toxic to bees exposed to direct treatment or residues on crops. Protective information may be obtained from your Cooperative Agricultural Extension Service. This product is toxic to fish. Keep out of lakes, streams, or ponds. Do not apply where runoff is likely to occur. Do not apply when weather conditions favor drift from areas treated. Do not contaminate water by cleaning of equipment, or disposal of wastes. Apply this product only as specified on this label. **DO NOT USE, POUR, SPILL OR STORE NEAR HEAT OR OPEN FLAME.**

LIVESTOCK

Do not treat animals under 1 month of age.

CATTLE (Beef and Non-milking), **HORSES** — Lice: Use 1 gallon Staffel's 56% Malathion per 100 Gallons of water or 6 1/2 ozs. per 5 gallons of water. Treat animals thoroughly.

TICKS: 1 to 2 gallons per 100 gallons. OR 6 1/2-13 ozs. per 5 gallons. Treat animals thoroughly. Repeat at 2 week intervals if needed.

HORN FLY: 1 to 1 1/2 gallons per 100 gallons. OR 6 1/2 to 10 ozs. per 5 gallons. Apply on back and neck of the animals and repeat applications at 10-14 day intervals. **BACK RUBBING DEVICES:** Lice — Make a mixture using 13 ozs. Staffel's 56% Malathion per 5 gallons of fuel oil. Make devices accessible at the rate of one to each 35-45 head of cattle. Retreat every 2-3 weeks. **DO NOT MAKE ACCESSIBLE TO LACTATING DAIRY ANIMALS WITHIN 2 WEEKS OF FRESHENING.**

HOGS: Lice, Sarcoptic Mange — 1 gallon per 100 gallons or 6 1/2 ozs. per 5 gallons. Treat animals, pens and litter thoroughly. When treating for Sarcoptic Mange use extreme care to cover all body surfaces including the inside of the ears. Second treatment may be necessary in 10 days. **HOGS SHOULD BE KEPT OUT OF SUN AND WIND FOR A FEW HOURS AFTER TREATMENT.**

SHEEP AND GOATS: Lice, Ticks and Keds — Mix 1 gallon per 100 OR 6 1/2 ozs. per 5 gallons. Treat animals thoroughly. Repeat application after 2 or 3 weeks if needed.

Do not apply to Dairy Goats.

STORED GRAINS

GRAINS: For the protection of stored grains, such as wheat, oats, rice, corn, rye, barley, grain sorghum, and field or garden seeds, against confused flour beetle, rice weevil, granary weevil, sawtoothed grain beetle, flat grain beetle, red flour beetle, rusty grain beetle, lesser grain borer, Indian meal moth, and for control of cereal leaf beetle, apply 56% Malathion as follows:

RESIDUAL SPRAY — BEFORE STORING GRAINS: For a residual wall, floor, and machinery spray in grain elevators, in treating truck beds, box cars, and ships' holds before loading grain, apply 1 gallon of 56% Malathion per 25 gallons of water making thorough application. Before applying spray, clean elevators, box cars, etc., thoroughly. Remove and burn all sweepings and debris.

GRAINS GOING INTO STORAGE: Apply 1 pint of 56% Malathion in 2-5 gallons of water per 1000 bushels. Apply as the grain is being loaded or turned into final storage.

AFTER GRAINS ARE STORED: To protect stored grains from attack by Indian meal moth, apply 56% Malathion to the surface of clean or uninfested grain at the rate of 1/2 pint in 1-2 gallons of water per 1000 square feet of grain surface area. Apply the spray evenly over the surface of the grain. Apply immediately after grain is loaded into storage and repeat if necessary.

DESTROY CONTAINER WHEN EMPTY.

ENTIRE LABEL

Refer to the Chart Rate and mix, to form suitable spreader-sticker at the recommended rate. Thoroughly spray entire plant. Be sure to

	Per Gal. Water	Per 100 Gal	Interval Last Appl. to Harvest
Scale, Pine, Juniper, Black Scale	4 Tsp	4 Pts	
Cur-lined, Apple, European Pine, Pear	2 Tsp	2 Pts	
Japanese	2 Tsp	2 Pts	1 Day
	1 1/2 Pts.	2 Pts	1 Day
	2 Tsp	2 Pts	14 Days 7 Days
Japanese Beetles, after	2 Tsp	2 Pts	7 Days
Curculio, after	2 Tsp	2 Pts	1 Day

Thoroughly after handling. Do not contaminate, sparks and open flame. Highly toxic to man, cleaning of equipment or disposal of residues to direct treatment or residues on crops. Agricultural Extension Service. This product should be applied where runoff is likely to occur. Do not contaminate water by cleaning of equipment specified on this label. DO NOT USE, POUR,

LIVESTOCK

Do not treat animals under 1 month of age. **CATTLE** (Beef and Non-milking), **HORSES** — Lice: Use 1 gallon Staffel's 56% Malathion per 100 Gallons of water or 6 1/2 ozs. per 5 gallons of water. Treat animals thoroughly.

TICKS: 1 to 2 gallons per 100 gallons. OR 6 1/2-13 ozs. per 5 gallons. Treat animals thoroughly. Repeat at 2 week intervals if needed.

HORN FLY: 1 to 1 1/2 gallons per 100 gallons. OR 6 1/2 to 10 ozs. per 5 gallons. Apply on back and neck of the animals and repeat applications at 10-14 day intervals. **BACK RUBBING DEVICES:** Lice — Make a mixture using 13 ozs. Staffel's 56% Malathion per 5 gallons of fuel oil. Make devices accessible at the rate of one to each 35-45 head of cattle. Retreat every 2-3 weeks. **DO NOT MAKE ACCESSIBLE TO LACTATING DAIRY ANIMALS WITHIN 2 WEEKS OF FRESHENING.**

HOGS: Lice, Sarcopic Mange — 1 gallon per 100 gallons or 6 1/2 ozs. per 5 gallons. Treat animals, pens and litter thoroughly. When treating for Sarcopic Mange use extreme care to cover all body surfaces including the inside of the ears. Second treatment may be necessary in 10 days. **HOGS SHOULD BE KEPT OUT OF SUN AND WIND FOR A FEW HOURS AFTER TREATMENT.**

SHEEP [AND] GOATS: Lice, Ticks and Keds — Mix 1 gallon per 100 OR 6 1/2 ozs. per 5 gallons. Treat animals thoroughly. Repeat application after 2 or 3 weeks if needed. Do not apply to Dairy Goats.

STORED GRAINS

GRAINS: For the protection of stored grains, such as wheat, oats, rice, corn, rye, barley, grain sorghum, and field or garden seeds, against confused flour beetle, rice weevil, granary weevil, sawtoothed grain beetle, flat grain beetle, red flour beetle, rusty grain beetle, lesser grain borer, Indian meal moth, and for control of cereal leaf beetle, apply 56% Malathion as follows:

RESIDUAL SPRAY — BEFORE STORING GRAINS: For a residual wall, floor, and machinery spray in grain elevators, in treating truck beds, box cars, and ships' holds before loading grain, apply 1 gallon of 56% Malathion per 25 gallons of water making thorough application. Before applying spray, clean elevators, box cars, etc., thoroughly. Remove and burn all sweepings and debris.

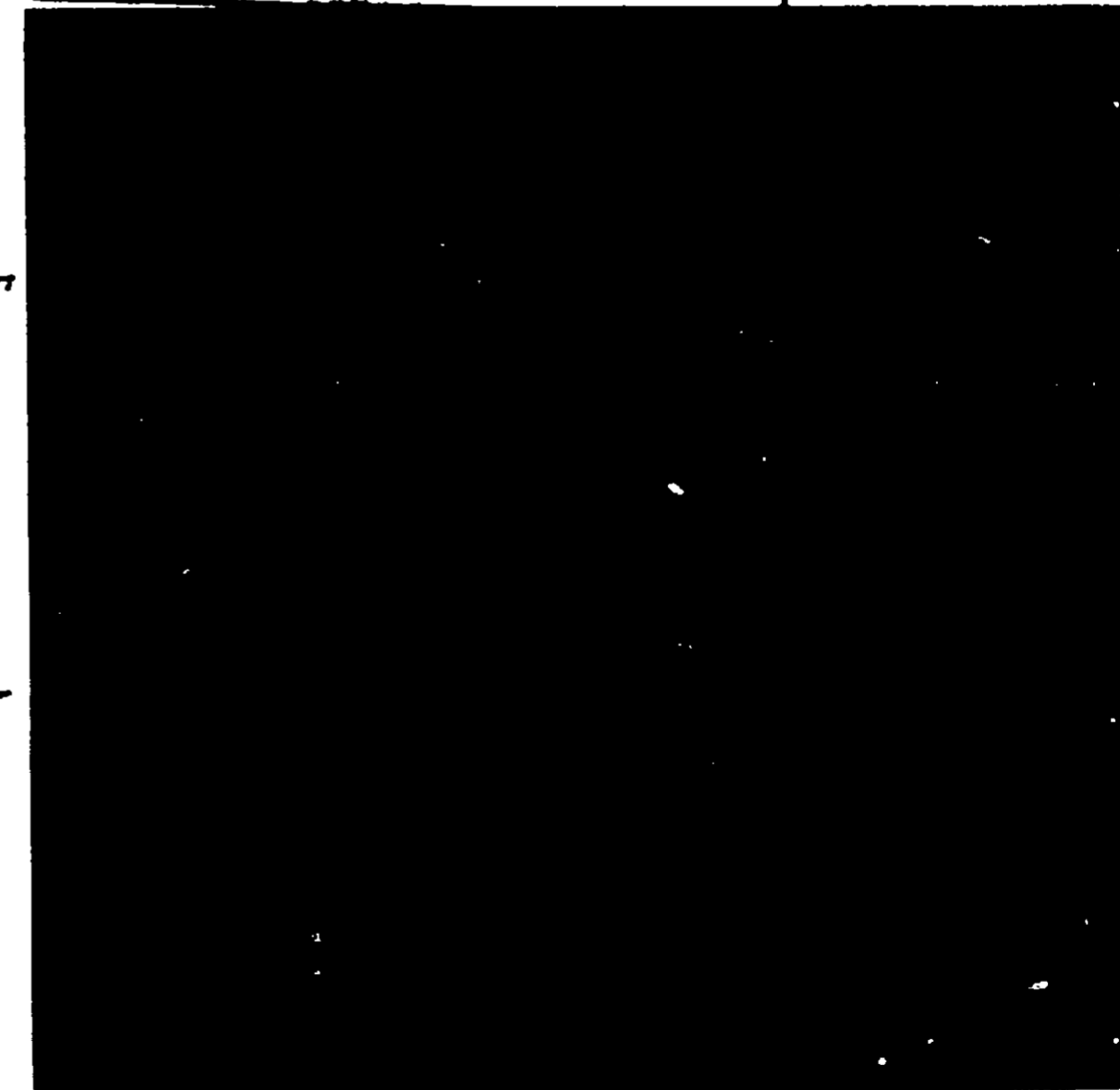
GRAINS GOING INTO STORAGE: Apply 1 pint of 56% Malathion in 2-5 gallons of water per 1000 bushels. Apply as the grain is being loaded or turned into final storage.

AFTER GRAINS ARE STORED: To protect stored grains from attack by Indian meal moth, apply 56% Malathion to the surface of clean or uninfested grain at the rate of 1/2 pint in 1-2 gallons of water per 1000 square feet of grain surface area. Apply the spray evenly over the surface of the grain. Apply immediately after grain is loaded into storage and repeat if necessary.

DESTROY CONTAINER WHEN EMPTY.



1 GALLON
 AUG 2 1963
 56%
Malathion
 UNDER THE FEDERAL INSECTICIDE FUNGICIDE AND RODENTICIDE ACT FOR ECONOMIC PESTS, REGISTERED UNDER NO. 2856-5 (Premium Grade) SUBJECT TO ATTACHED COMMENTS.



FIRE LABEL

er at the Chart Rate or ...
 suitable spreader-sticker at the ...
 oughly spray entire plant

	Per Gal.	Per 100 Gal.	Interval Last Appl. to Harvest
cale, Pine	4 Tss	4 Pts	
Juniper,			
Black Scale			
linea			
pper,	1 Tss	1 Pts	
proem			
lar			
apanese	1 Tss	1 Pts	1 Day
	1/2 Pts	1 Pts	1 Day
	1 Tss	1 Pts	14 Days
			7 Days
ese Beet	1 Tss	1 Pts	1 Day
fter			
um Cor	1 Tss	1 Pts	1 Day
fter			

oughly after handling. Do not contaminate
 sparks and open flame. Highly toxic to
 on, cleaning of equipment or disposal of
 to direct treatment or residues on crops.
 Agricultural Extension Service. This product
 ly where runoff is likely to occur. Do not
 o not contaminate water by cleaning of
 ified on this label. **DO NOT USE, POUR,**

LIVESTOCK

Do not treat animals under 1 month of age.
CATTLE (Beef and Non-milking), **HORSES** — Lice: Use 1 gallon Staffel's 56% Malathion per 100 Gallons of water or 6 1/2 ozs. per 5 gallons of water. Treat animals thoroughly.

TICKS: 1 to 2 gallons per 100 gallons. OR 6 1/2-13 ozs. per 5 gallons. Treat animals thoroughly. Repeat at 2 week intervals if needed.

HORN FLY: 1 to 1 1/2 gallons per 100 gallons. OR 6 1/2 to 10 ozs. per 5 gallons. Apply on back and neck of the animals and repeat applications at 10-14 day intervals.
BACK RUBBING DEVICES: Lice — Make a mixture using 13 ozs. Staffel's 56% Malathion per 5 gallons of fuel oil. Make devices accessible at the rate of one to each 35-45 head of cattle. Retreat every 2-3 weeks. **DO NOT MAKE ACCESSIBLE TO LACTATING DAIRY ANIMALS WITHIN 2 WEEKS OF FRESHENING.**

HOGS: Lice, Sarcoptic Mange — 1 gallon per 100 gallons or 6 1/2 ozs. per 5 gallons. Treat animals, pens and litter thoroughly. When treating for Sarcoptic Mange use extreme care to cover all body surfaces including the inside of the ears. Second treatment may be necessary in 10 days. **HOGS SHOULD BE KEPT OUT OF SUN AND WIND FOR A FEW HOURS AFTER TREATMENT.**

SHEEP AND GOATS: Lice, Ticks and Keds — Mix 1 gallon per 100 OR 6 1/2 ozs. per 5 gallons. Treat animals thoroughly. Repeat application after 2 or 3 weeks if needed. Do not apply to Dairy Goats.

STORED GRAINS

GRAINS: For the protection of stored grains, such as wheat, oats, rice, corn, rye, barley, grain sorghum, and field or garden seeds, against confused flour beetle, rice weevil, granary weevil, saw-toothed grain beetle, flat grain beetle, red flour beetle, rusty grain beetle, lesser grain borer, Indian meal moth, and for control of cereal leaf beetle, apply 56% Malathion as follows:

RESIDUAL SPRAY — BEFORE STORING GRAINS: For a residual wall, floor, and machinery spray in grain elevators, in treating truck beds, box cars, and ships' holds before loading grain, apply 1 gallon of 56% Malathion per 25 gallons of water making thorough application. Before applying spray, clean elevators, box cars, etc., thoroughly. Remove and burn all sweepings and debris.

GRAINS GOING INTO STORAGE: Apply 1 pint of 56% Malathion in 2-5 gallons of water per 1000 bushels. Apply as the grain is being loaded or turned into final storage.

AFTER GRAINS ARE STORED: To protect stored grains from attack by Indian meal moth, apply 56% Malathion to the surface of clean or uninfested grain at the rate of 1/2 pint in 1-2 gallons of water per 1000 square feet of grain surface area. Apply the spray evenly over the surface of the grain. Apply immediately after grain is loaded into storage and repeat if necessary.

DESTROY CONTAINER WHEN EMPTY

ACCEPTED

1 GALLON

56%

MALATHION

32565
 (Premium Grade)

..... 56 %
 Solvent 32 %
 12 %
CAUTION
KEEP OUT OF REACH OF CHILDREN. HARMFUL
IF SWALLOWED, INHALED OR ABSORBED
 through the skin.
 See back panel for additional cautions.

FRED STAFFEL CO.
 San Antonio, Texas 78206