

UNITED STATES ENVIRONMENTAL PROTECTION AGENCY  
WASHINGTON, D.C. 20460



OFFICE OF CHEMICAL SAFETY  
AND POLLUTION PREVENTION

Decision 461640

570    5-911788  
1300

JUN 18 2012

Reckitt Benckiser Inc.  
Morris Corporate Center IV  
399 Interpace Parkway  
Parsippany, NJ 07054

Attention: Ms. Heather R. Bjornson

Decision 456106

300    5-918660  
1155

**Subject**            d-Con® Bait Station™ XII  
EPA Reg. No. 3282-103  
Your submissions of September 15, 2011, and February 13, 2012  
Your resubmission of June 6, 2012

**Purpose**            These submissions, under sec 3 of the Federal Insecticide, Fungicide, and Rodenticide Act (FIFRA), make changes to the label, including marketing claims, and include conditional data (storage stability and corrosion characteristics) that we have requested for this product.

**Review**            We have reviewed the conditional data (MRID No 487455-01) for this product and found them acceptable. We have placed our review in your file for this product. No additional chemistry data are needed at this time.

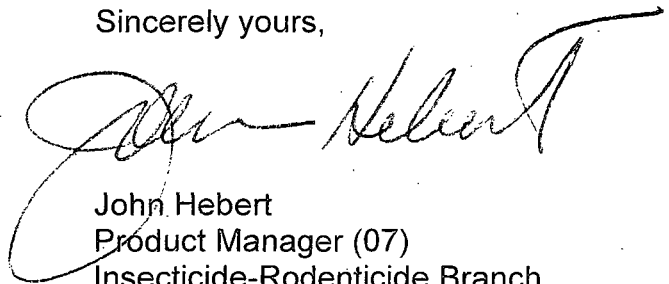
**Labeling**            The labeling submitted with the above resubmission, under the Federal Insecticide, Fungicide, and Rodenticide Act (FIFRA) is acceptable, provided you submit one (1) copy of final printed labeling to us, before you ship your product.

**Existing stocks**    You may distribute or sell existing stocks of this product with current labeling for eighteen (18) months from the date of this letter.

**Consequence for non-compliance** If these conditions are not complied with, the registration will be subject to cancellation in accordance with FIFRA section 6(e). Your release for shipment of the product constitutes acceptance of these conditions.

**Questions** If you have questions about this letter, please contact Dan Peacock at 703-305-5407 (by phone) or [peacock.dan@epa.gov](mailto:peacock.dan@epa.gov) (by E-Mail).

Sincerely yours,



John Hebert  
Product Manager (07)  
Insecticide-Rodenticide Branch  
Registration Division (7505P)

- Enclosures**
1. Stamped Label
  2. Minimum Type Size Requirements for Final Printed Labels
  3. Storage Stability and Corrosion Characteristics Review, 3282-103

2/13

Tethys XII (Tier 1 – Diphacinone - Refillable)  
EPA REG. NO: 3282-103

Page 1 of 11  
June 4, 2012

003282-00103.20120604

**OUTER CARTON FRONT LABEL**

ACCEPTED JUN 18 2012

**d-CON®** Under the Federal Insecticide, Fungicide,  
Bait Station XII and Rodenticide Act, as amended, for the  
KILLS MICE pesticide registered under:

This Bait Station is Resistant to Weather and to EPA Reg. No. by Children and Dogs.  
For Use Indoors and Outdoors.

3282-103

KEEP OUT OF REACH OF CHILDREN

CAUTION: Read additional precautionary statements on back (side) panel.

**ACTIVE INGREDIENT:**

Diphacinone  
(2-Diphenylacetyl-1, 3-Indandione)..... 0.005%

**OTHER INGREDIENTS:** ..... 99.995%

**TOTAL** ..... 100.000%

EPA Reg. No.: 3282-103

EPA Est. No.: {insert number}

(Contains:) (1-2) (Refillable) Bait Station (and) (+) (1-2) Refill(s) (Bait)(Blocks); Each  
bait station contains one, 1.0 oz block

(Net Contents:) 7 OZ. (196 g) per bait

TOTAL: (7-14 OZ.) (196 - 392 g)

4/13

## **OUTER CARTON BACK LABEL**

**Important:** For Directions for Use and First Aid instructions in Spanish, please call 1-866-648-1819

### **DIRECTIONS FOR USE**

**It is a violation of Federal law to use this product in a manner inconsistent with its labeling.**

**READ THIS LABEL:** Read this entire label and follow all use directions and use precautions. Use only for sites, pests, and application methods described on this label.

**USE RESTRICTIONS:** Use only to control house mice. This bait station may be used in and around (within 50 feet of) homes accessible to children and pets, consistent with all use restrictions and other requirements indicated on this label. Do not apply further than 50 feet away from home or building.

**SELECTION OF TREATMENT AREAS:** Determine areas where house mice will most likely find and consume the bait. Generally, these are along walls, by gnawed openings in corners and concealed places or in locations where there are signs of house mice.

#### **TO CONTROL HOUSE MICE:**

1. Remove the bait station from the carton
2. Placement: Place along walls or in corners with the entrance holes exposed.

Place bait stations at 8- to 12- foot intervals in appropriate locations in infested areas, as specified on this label. Make sure that mouse entrance holes are exposed.

Maintain stations for a minimum of 15 days or as long as activity persists. Wearing gloves, replace bait in bait station if contents have been consumed, damaged, or if bait is exposed. If bait is not touched after 3 days, move station to a new location where mouse activity is evident. Wearing gloves, collect and dispose of all dead animals and leftover bait properly as specified on this label. To discourage reinfestation, limit sources of rodent food, water and harborage as much as possible. If reinfestation does occur, repeat treatment.

S/13

**To (Load or) Refill {pictograms may be added to illustrate each step}**

1. Simultaneously, pull back all three latches.
2. While holding all latches, press down on the center of the single clip (to open refill window).
3. Wearing gloves, remove a new bait block from its (packaging) (wrapping).
4. Place the new bait block into the station ensuring that the peg goes through the hole in the bait block. Press block firmly into the station.
5. Close the station by pushing the window down until a click is heard.
6. Wash hands thoroughly.

6/13

**PRECAUTIONARY STATEMENTS:**

**Hazards to Humans and Domestic Animals**

**CAUTION:** Harmful if swallowed. Keep away from humans, domestic animals and pets. All handlers (including applicators) must wear gloves. Any person who retrieves carcasses, exposed bait, or bait station following application of this product must wear gloves.

<b>FIRST AID</b>	
<b>If Swallowed:</b>	<ul style="list-style-type: none"><li>• Call a Poison Control Center, or doctor <b>IMMEDIATELY</b> for treatment advice.</li><li>• Have person sip a glass of water if able to swallow.</li><li>• <b>DO NOT</b> induce vomiting unless told to do so by the Poison Control Center or doctor.</li></ul>
<b>TREATMENT FOR PET POISONING</b> If animal eats bait, call veterinarian at once.	
<b>NOTE TO PHYSICIAN OR VETERINARIAN</b> Contains the anticoagulant Diphacinone. If swallowed, this material may reduce clotting ability of the blood and cause bleeding. For humans or animals ingesting bait and/or showing poisoning signs (bleeding or elevated prothrombin times), give Vitamin K1.	
<b>CONTACT NUMBER</b>	
In case of emergency, call toll free 1-800-228-4722. Have the product container or label with you when calling a Poison Control Center or doctor, or going for treatment.	

**ENVIRONMENTAL HAZARDS:** This product is extremely toxic to mammals, birds and other wildlife. Dogs and other predatory and scavenging mammals and birds might be poisoned if they feed upon animals that have eaten this bait. Do not apply directly to water.

**STORAGE AND DISPOSAL**

**PESTICIDE STORAGE:** Store in original container in a dry place inaccessible to children and pets.

**PESTICIDE DISPOSAL AND CONTAINER HANDLING:** Non-refillable container. Do not reuse or refill this container except as described in the directions for use. **If empty,** place in trash or offer for recycling if available. **If partly filled:** Call your local solid waste agency for disposal instructions. Never place any unused product down any indoor or outdoor drain.

7/13

**NOTICE TO BUYER AND USER:** Buyer and user assume all responsibility for safety and risk associated with any use not in accordance with directions. TO THE EXTENT CONSISTENT WITH APPLICABLE LAW, SELLER SHALL NOT BE LIABLE FOR CONSEQUENTIAL, SPECIAL OR INDIRECT DAMAGES RESULTING FROM THE USE OR HANDLING OF THIS PRODUCT AND SELLER'S SOLE LIABILITY AND BUYER'S AND USER'S EXCLUSIVE REMEDY SHALL BE LIMITED TO THE REFUND OF THE PURCHASE PRICE.

Questions? {telephone icon} 1-800-228-4722

For ingredient (and other) information, [www.rbnainfo.com](http://www.rbnainfo.com)

Distributed by: Reckitt Benckiser

Parsippany, NJ 07054-XXXX

(Made in {insert country}) (Assembled in {insert country}) (Components from {insert country})

RB © [date]

RB (Reckitt Benckiser) Logo

8/13

**LABELING FOR STATION**

**(Peel back)**

**d-CON®**  
**Bait Station XII**  
**KILLS MICE**

**This Bait Station is Resistant to Weather and to Tampering by Children and Dogs.  
For Use Indoors and Outdoors.**

**ACTIVE INGREDIENT:**

Diphacinone	
(2-Diphenylacetyl-1, 3-Indandione. ....	0.005%
<b>OTHER INGREDIENTS: .....</b>	<b>99.995%</b>
<b>TOTAL .....</b>	<b>100.000%</b>

(Net Contents: ) ; Each bait station contains one, 1.0 oz block

EPA Reg. No.: 3282-103  
EPA Est. No.: {insert number}

**DO NOT ALLOW CHILDREN OR PETS TO PLAY WITH BAIT STATION**  
**CAUTION: This product is an anticoagulant type of rodenticide. If swallowed, call a physician or veterinarian. See outer package label for additional precautionary statements, first aid information and directions for use.**

**This bait station can only be refilled with the bait blocks sold with this station.**

Questions? {telephone icon} 1-800-228-4722  
For ingredient (and other) information, [www.rbnainfo.com](http://www.rbnainfo.com)  
Distributed by: Reckitt Benckiser  
Parsippany, NJ 07054-XXXX  
(Made in {insert country}) (Assembled in {insert country}) (Components from {insert country})  
RB © [date]



9/13

## **Optional Marketing Claims**

[Bait] Station is child (and dog) resistant  
Can be used horizontally and (or) vertically  
Can be used indoors or outdoors  
Can be used in tight places around the home {pictogram}  
Child and dog- resistant [bait] station  
Child, dog and weather- resistant [bait] station  
Child resistant [bait] station  
Child tamper-resistant [bait] station  
Clear window (for easy monitoring)  
Compact design  
Contains (x) Bait Block(s)  
Contains bait blocks – no pellets!  
Contains Bitrex® (- bittering agent)  
Control house mouse problems  
Dog resistant [bait] station  
Dog Tested [Bait] Station  
Durable design of [bait] station is child and dog resistant  
For use indoors and out  
Guaranteed to kill Helps reduce house mice problems  
(x) Hideaway™ Bait Station(s) (with Bait)  
Horizontal (placement)  
House mice may consume a lethal dose in multiple nights of feeding with first dead rodents appearing four or five days after feeding begins  
Indoor and outdoor use  
Kid and Dog - Resistant [Bait] Station  
Kid & Dog Tamper-Resistant [Bait] Station  
Kid and Dog Tested [Bait] Station  
Kid Tested [bait] station  
Kills house mice  
Low profile bait station  
House mice go in, eat the bait, mice go out {pictogram}  
Patent Pending  
Pre-baited (- Ready to use bait station with bait refills included)  
Pre-loaded (ready to use) bait station with bait refills included  
Ready to use  
Refillable Bait Station (with) (contains) Bait refills  
(x) Refillable Bait Stations  
(x) Refill(s) (Bait) (Blocks)  
Refillable Bait Station + X Refills  
Pre-Baited Bait Station + X Refills  
(x) (Refillable) Bait Station(s)  
X Refills + X Refillable Bait Station(s)  
Satisfaction Guaranteed or your money back  
Use indoors and out

10/13

Weather resistant [bait] station

### **Optional Marketing Claims with Pictograms**

{The following claims can be used in conjunction with a pictogram.}

- Clear window lets you know when to replace bait or dispose of bait station
- Compact design
- Low profile bait station
- House mice go in, eat the bait, mice go out
- Refillable
- Window shows how much bait is left
- Can be used in tight places around the home
- Use in tight places (spaces) {pictogram}

### **Optional Marketing Claims with Pictograms & Qualifier**

{The following claims can be used in conjunction with a pictogram.}

- Can be used in tight places around the home
- Designed to fit in corners, indoors and outdoors, at locations specified in the USE RESTRICTIONS and in DIRECTIONS FOR USE.
- Directions for use: {pictograms showing use sites}
- Fits behind some furniture/appliances in label permitted locations
- Fits in almost any corner
- Use inside (in) (cabinets) (closets) (garages) (attics)
- Use under (between) (appliances)
- Use (inside) (in) (between) (underneath) (under) (cabinets) (closets) (garages) (attics) (behind) (and) (or) (appliances)\* {pictogram}
- Use in tight places (spaces) {pictogram}
- Window shows how much bait is left

{The following qualifier statement must appear on the same panel and in close proximity to the above claims and pictograms}

Must adhere to the Use Restrictions in the Directions for Use section of this label.

11/13

**6 Month Introductory Claims (only for use for the first 6 months of commercialization)**

- New
- New Design
- New Bait Station
- New Child (and Dog) Resistant [Bait] Station Design
- New Design
- New & Improved Bait Station
- New (Refillable) Bait Station Design

**PICTOGRAMS**

Front panel graphic of brand name

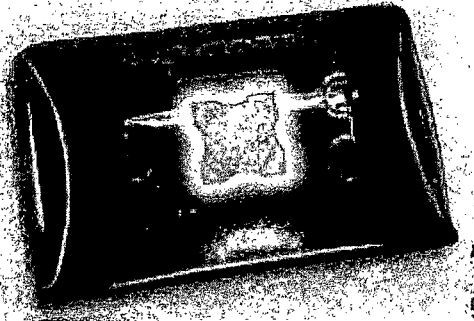
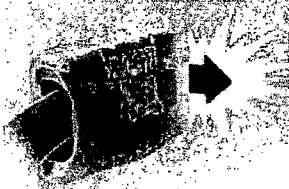
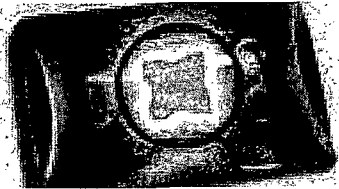
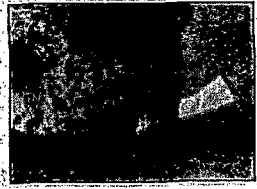


Optional pictograms for marketing claims :

As shown below, station fits easily under cabinets, beside appliances, and behind furniture.



1213



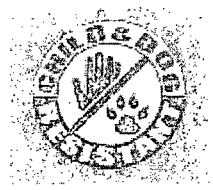
Look for black  
bait pellets inside.  
Bait pellets always lay around  
in this bait station.

ACTIVE INGREDIENT:  
Diphacinone  
2-(4-chlorophenyl)-1,3-dioxane  
OTHER INGREDIENTS:

**TU HILL**

Look for black  
bait pellets inside.  
Bait pellets always lay around  
in this bait station.

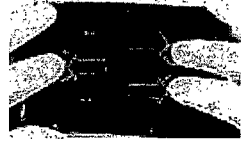
ACTIVE INGREDIENT:  
Diphacinone  
2-(4-chlorophenyl)-1,3-dioxane  
OTHER INGREDIENTS:



{OPTIONAL PICTOGRAMS ILLUSTRATING REFILL DIRECTIONS}

To load or refill see "TO REFILL" section

Step 1



Step 2



Step 3 - 4



Step 5

