

3282-100

6/18/2012

1/11

UNITED STATES ENVIRONMENTAL PROTECTION AGENCY  
WASHINGTON, D.C. 20460



OFFICE OF CHEMICAL SAFETY  
AND POLLUTION PREVENTION

Decision 461638

570 5-911786  
1300

JUN 18 2012

Reckitt Benckiser Inc.  
Morris Corporate Center IV  
399 Interpace Parkway  
Parsippany, NJ 07054

Decision 456104

300 5-918654  
1155

Attention: Ms. Heather R. Bjornson

**Subject** d-Con® Bait Station™ XIV  
EPA Reg. No. 3282-100  
Your submissions of September 15, 2011, and February 13, 2012  
Your resubmission of June 6, 2012

**Purpose** These submissions, under sec 3 of the Federal Insecticide, Fungicide, and Rodenticide Act (FIFRA), make changes to the label, including marketing claims, and include conditional data (storage stability and corrosion characteristics) that we have requested for this product.

**Review** We have reviewed the conditional data (MRID No 487455-01) for this product and found them acceptable. We have placed our review in your file for this product. No additional chemistry data are needed at this time.

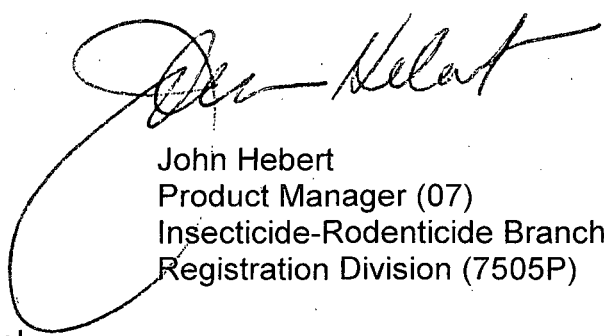
**Labeling** The labeling submitted with the above resubmission, under the Federal Insecticide, Fungicide, and Rodenticide Act (FIFRA) is acceptable, provided you submit one (1) copy of final printed labeling to us, before you ship your product.

**Existing stocks** You may distribute or sell existing stocks of this product with current labeling for eighteen (18) months from the date of this letter.

**Consequence for non-compliance** If these conditions are not complied with, the registration will be subject to cancellation in accordance with FIFRA section 6(e). Your release for shipment of the product constitutes acceptance of these conditions.

**Questions** If you have questions about this letter, please contact Dan Peacock at 703-305-5407 (by phone) or [peacock,dan@epa.gov](mailto:peacock,dan@epa.gov) (by E-Mail).

Sincerely yours,



John Hebert  
Product Manager (07)  
Insecticide-Rodenticide Branch  
Registration Division (7505P)

- Enclosures**
1. Stamped Label
  2. Minimum Type Size Requirements for Final Printed Labels
  3. Storage Stability and Corrosion Characteristics Review, 3282-100

3/11

Saturn XIV  
EPA REG. NO: 3282-100

003282-00100.20120606

Page 1 of 9  
June 6, 2012

**OUTER CARTON FRONT LABEL**

**d-CON®**  
Bait Station XIV

KILLS MICE

ACCEPTED JUN 18 2012

This Bait Station is Resistant to Weather and to Tampering by Children and Dogs. For Use Indoors and Outdoors.  
**Under the Federal Insecticide, Fungicide, and Rodenticide Act, as amended, for the pesticide registered under:**

**KEEP OUT OF REACH OF CHILDREN**

**CAUTION:** Read additional precautionary statements on back (side) panel. EPA Reg. No. 3282-100

**ACTIVE INGREDIENT:**

Diphacinone  
(2-Diphenylacetyl-1, 3-Indandione)..... 0.005%

**OTHER INGREDIENTS:** ..... 99.995%

**TOTAL** ..... 100.000%

EPA Reg. No.: 3282-100

EPA Est. No.: {insert number}

(Contains:) (1-2) (Disposable) Bait Stations; Each bait station contains one, 1.0 oz block

(Net Contents:) (1-2) OZ. (28 g) per bait

(TOTAL: (1-2) oz. (28-56 g))

411

## **OUTER CARTON BACK LABEL**

**Important:** For Directions for Use and First Aid instructions in Spanish, please call 1-866-648-1819

### **DIRECTIONS FOR USE**

**It is a violation of Federal law to use this product in a manner inconsistent with its labeling.**

**READ THIS LABEL:** Read this entire label and follow all use directions and use precautions. Use only for the sites, pests, and application methods described on this label.

**USE RESTRICTIONS:** Use only to control house mice. This bait station may be used in and around (within 50 feet of) homes accessible to children and pets, consistent with all use restrictions and other requirements indicated on this label. Do not apply further than 50 feet away from home or building.

**SELECTION OF TREATMENT AREAS:** Determine areas where house mice will most likely find and consume the bait. Generally, these are along walls, by gnawed openings in corners and concealed places or in locations where there are signs of house mice.

#### **TO CONTROL HOUSE MICE:**

1. Remove the bait station from the carton
2. Placement: Place along walls or in corners with the entrance holes exposed.

Place bait stations at 8- to 12- foot intervals in appropriate locations in infested areas, as specified on this label. Make sure that mouse entrance holes are exposed.

Maintain stations for a minimum of 15 days or as long as activity persists. Replace bait station if contents have been consumed, damaged, or if bait is exposed. If bait is not touched after 3 days, move station to a new location where mouse activity is evident. Wearing gloves, collect and dispose of all dead animals and leftover bait properly as specified on this label. To discourage reinfestation, limit sources of rodent food, water and harborage as much as possible. If reinfestation does occur, repeat treatment.

5/11

**PRECAUTIONARY STATEMENTS:**

**Hazards to Humans and Domestic Animals**

**CAUTION:** Harmful if swallowed. Keep away from humans, domestic animals and pets. All handlers (including applicators) must wear gloves. Any person who retrieves carcasses, exposed bait, or bait station following application of this product must wear gloves.

| <b>FIRST AID</b>                                                                                                                                                                                                                                                                                            |                                                                                                                                                                                                                                                                                                        |
|-------------------------------------------------------------------------------------------------------------------------------------------------------------------------------------------------------------------------------------------------------------------------------------------------------------|--------------------------------------------------------------------------------------------------------------------------------------------------------------------------------------------------------------------------------------------------------------------------------------------------------|
| <b>If Swallowed:</b>                                                                                                                                                                                                                                                                                        | <ul style="list-style-type: none"><li>• Call a Poison Control Center, or doctor <b>IMMEDIATELY</b> for treatment advice.</li><li>• Have person sip a glass of water if able to swallow.</li><li>• <b>DO NOT</b> induce vomiting unless told to do so by the Poison Control Center or doctor.</li></ul> |
| <b>TREATMENT FOR PET POISONING</b><br>If animal eats bait, call veterinarian at once.                                                                                                                                                                                                                       |                                                                                                                                                                                                                                                                                                        |
| <b>NOTE TO PHYSICIAN OR VETERINARIAN</b><br>Contains the anticoagulant Diphacinone. If swallowed, this material may reduce clotting ability of the blood and cause bleeding. For humans or animals ingesting bait and/or showing poisoning signs (bleeding or elevated prothrombin times), give Vitamin K1. |                                                                                                                                                                                                                                                                                                        |
| <b>CONTACT NUMBER</b>                                                                                                                                                                                                                                                                                       |                                                                                                                                                                                                                                                                                                        |
| In case of emergency, call toll free 1-800-228-4722. Have the product container or label with you when calling a Poison Control Center or doctor, or going for treatment.                                                                                                                                   |                                                                                                                                                                                                                                                                                                        |

**ENVIRONMENTAL HAZARDS:** This product is extremely toxic to mammals, birds and other wildlife. Dogs and other predatory and scavenging mammals and birds might be poisoned if they feed upon animals that have eaten this bait. Do not apply directly to water.

**STORAGE AND DISPOSAL**

**PESTICIDE STORAGE:** Store in original container in a dry place inaccessible to children and pets.

**PESTICIDE DISPOSAL AND CONTAINER HANDLING:** Nonrefillable container. **If empty,** place in trash or offer for recycling if available. **If partly filled:** Call your local solid waste agency for disposal instructions. Never place any unused product down any indoor or outdoor drain.

6/11

**NOTICE TO BUYER AND USER:** Buyer and user assume all responsibility for safety and risk associated with any use not in accordance with directions. TO THE EXTENT CONSISTENT WITH APPLICABLE LAW, SELLER SHALL NOT BE LIABLE FOR CONSEQUENTIAL, SPECIAL OR INDIRECT DAMAGES RESULTING FROM THE USE OR HANDLING OF THIS PRODUCT AND SELLER'S SOLE LIABILITY AND BUYER'S AND USER'S EXCLUSIVE REMEDY SHALL BE LIMITED TO THE REFUND OF THE PURCHASE PRICE.

Questions? {telephone icon} 1-800-228-4722

For ingredient (and other) information, [www.rbnainfo.com](http://www.rbnainfo.com)

Distributed by: Reckitt Benckiser

Parsippany, NJ 07054-XXXX

(Made in {insert country}) (Assembled in {insert country}) (Components from {insert country})

RB © [date]

RB (Reckitt Benckiser) Logo

7/11

**LABELING FOR STATION**

**d-CON®**  
**Bait Station XIV**

KILLS MICE

**This Bait Station is Resistant to Weather and to Tampering by Children and Dogs.  
For Use Indoors and Outdoors.**

**ACTIVE INGREDIENT:**

|                                         |                 |
|-----------------------------------------|-----------------|
| Diphacinone                             |                 |
| (2-Diphenylacetyl-1, 3-Indandione. .... | 0.005%          |
| <b>OTHER INGREDIENTS:</b> .....         | <u>99.995%</u>  |
| <b>TOTAL</b> .....                      | <b>100.000%</b> |

(Net Contents:) Each bait station contains one, 1.0 oz block

EPA Reg. No.: 3282-100  
EPA Est. No.: {insert number}

**DO NOT ALLOW CHILDREN OR PETS TO PLAY WITH BAIT STATION**  
**CAUTION: This product is an anticoagulant type of rodenticide. If swallowed, call a physician or veterinarian. See outer package label for additional precautionary statements, first aid information and directions for use.**

Questions? {telephone icon} 1-800-228-4722  
For ingredient (and other) information, www.rbnainfo.com  
Distributed by: Reckitt Benckiser  
Parsippany, NJ 07054-XXXX

(Made in {insert country}) (Assembled in {insert country}) (Components from {insert country})

RB © [date]

8/11

**Optional Marketing Claims (Front or Back or Side Panel)**

Bait block contained in each bait station  
Bait block contained in each bait station – no pellets!  
[Bait] Station is child (and dog) resistant Can be used indoors or outdoors  
Child and dog resistant [bait] station  
Child, dog and weather resistant [bait] station  
Child resistant [bait] station  
Child tamper-resistant [bait] station  
Clear window (for easy monitoring)  
Compact design  
Contains Bitrex®  
Control house mouse problems  
Corner Fit™  
Dog resistant [bait] station  
Dog Tested [bait] station  
Durable design of [bait] station is child and dog resistant  
For use indoors and out  
Guaranteed to kill or your money back  
Helps reduce house mice problems  
House mice may consume a lethal dose in multiple nights of feeding with first dead rodents appearing four or five days after feeding begins  
Indoor and outdoor use  
Kid and Dog -Resistant [Bait] Station  
Kid & Dog Tamper-Resistant [Bait] Station  
Kid and Dog Tested [Bait] Station  
Kid Tested [Bait] Station  
Kills house mice  
Low profile bait station  
House mice go in, eat the bait, mice go out  
No need to touch (the) bait when placing station  
Patent Pending  
Preloaded bait station (Ready to use)  
Prebaited - Ready to use  
Pre-Baited Bait Station  
Satisfaction Guaranteed or your money back  
See thru lid (for easy monitoring)  
[Bait] Station is child (and dog) resistant  
Use indoors and out  
Weather resistant [bait] station Window shows how much bait is left



### **Optional Marketing Claims with Pictograms & Qualifier**

{The following claims can be used in conjunction with a pictogram.}

Can be used in tight places around the home  
Designed to fit in corners, indoors and outdoors, at locations specified in USE  
RESTRICTIONS in DIRECTIONS FOR USE  
Directions for use: {pictograms showing use sites}  
Fits behind some furniture/appliances in label permitted locations  
Use inside (in) (cabinets) (closets) (garages) (attics)  
Use under (between) (appliances)  
Use inside (in) cabinets and (or) under (between) appliances  
Use in tight places (spaces) {pictogram}  
Window shows how much bait is left

{The following qualifier statement must appear on the same panel and in close proximity to the above claims and pictograms}

Must adhere to the Use Restrictions in the Directions for Use section of this label.

### **6 Month Introductory Claims (only for use for the first 6 months of commercialization)**

New  
New Bait Station (design)  
New Child (and Dog) Resistant [Bait] Station Design  
New Design  
New & Improved Bait Station Design

10/11

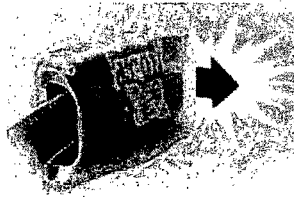
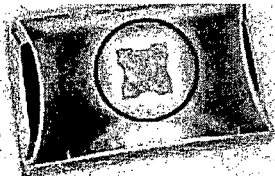
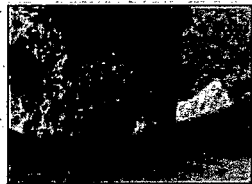
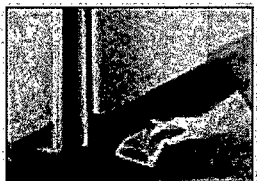
PICTOGRAMS

Front panel graphic of brand name



Optional pictograms for marketing claims:

As shown below, station fits easily under cabinets, beside appliances, and behind furniture.



cc/cc

