

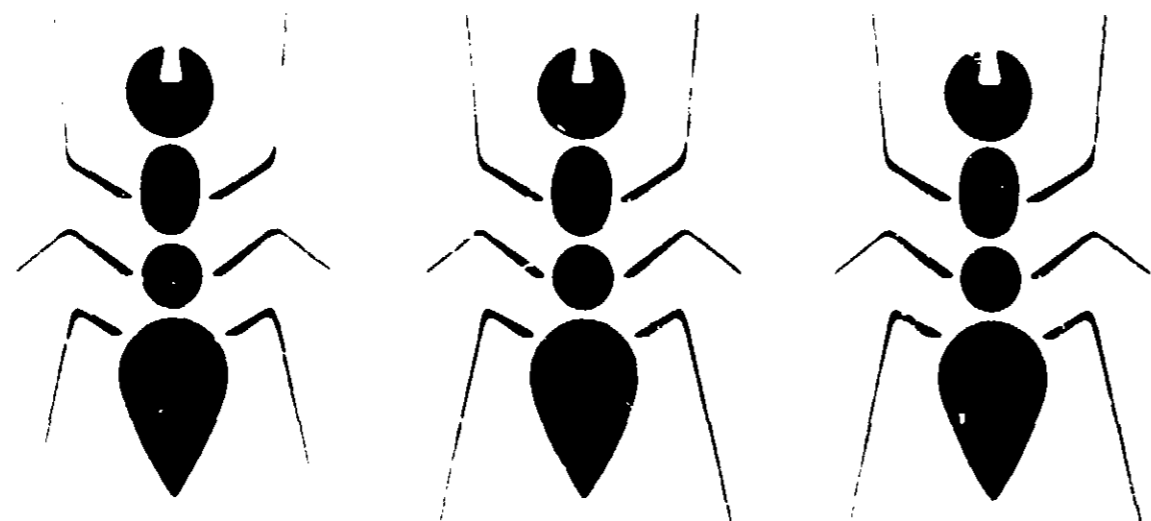
[3282-31]

d-CON

ant-prufe

kills ants

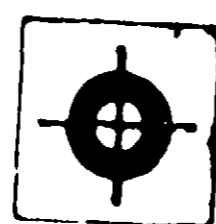
ACCEPTED
 APR 14 1973
 NO. 3282-
 TO ATTACHED DOCUMENT 31



NET CONTENTS: 8 FL. OZ.

CAUTION: Keep out of the reach of children

SEE OTHER CAUTION ON BACK



Packaging
Co., Inc. AA 4055
7678

DIRECTIONS

SHAKE WELL BEFORE APPLYING. Lift spout upright. Squirt d-CON ANT-PRUFE on ant runways and places frequented by ants. Treat window and door sills. For control of lawn ants, use d-CON ANT-PRUFE generously in and around surfaces where these insects run, hide or rest. For larger areas, unscrew cap, pour into container, apply with paint brush. ROACHES, WATERBUGS and SILVERFISH: ANT-PRUFE may be applied to baseboards, corners of kitchen cabinets, and areas around stove and refrigerator. Areas around water pipes and heat ducts should also be treated. Repeat application when necessary.

CAUTION: This solution, if brought into contact with skin, can cause toxic symptoms. Avoid inhalation and skin contact. In case of spillage on the skin, wash immediately with soap and water. Avoid contamination of food—and feedstuffs. Harmful if swallowed. Keep out of reach of children. Do not use on household pets, livestock, or humans. Rinse empty container thoroughly with water and discard it.

Do not use in edible products areas of food processing plants, restaurants or other areas where food is commercially prepared or processed. Do not use in serving areas while food is exposed.

ACTIVE INGREDIENTS:

(5-Benzyl-3-Furyl) Methyl 2,2-Dimethyl-3-(2-Methylpropenyl) cyclopropane Carboxylate	0.500
Related Compounds	0.068
Aromatic Petroleum Hydrocarbons	0.912
Petroleum Distillate	0.500
INERT INGREDIENTS	98.020
Total	100.000

THE d-CON COMPANY, INC., DISTR.
New York, N.Y. 10016

EPA Reg. No. 3282-31-AA