

YLD3

Base Pre-Reg. (4799)

U.S. LABEL

Reason to Issue: To propose registra-
tion of new product for use on turf,
3/28/83 Draft: to revise Directions
for use; Recommended applications,
Spreader Settings, and Restrictions.

Date of Draft: 3/28/83 (Pre-Reg) (S)
Supersedes Pre-Reg. Draft Dated: 10/10/80

® OFTANOL

1.5% Granular

INSECTICIDE

FOR INSECT CONTROL ON
TURF GRASSES

ACTIVE INGREDIENT:
1-Methylethyl 2-[[ethoxy[(1-
methylethyl)amino]phosphino-
thioyl]oxy]benzoate/ 1.5%

INERT INGREDIENTS: 98.5%
100.0%

/U.S. Patent No. 3,621,082
Canadian Patent No. 825,198

EPA File Symbol No. 3125-GGR
EPA Est. 3125-MO-1

STOP - READ THE LABEL BEFORE USE

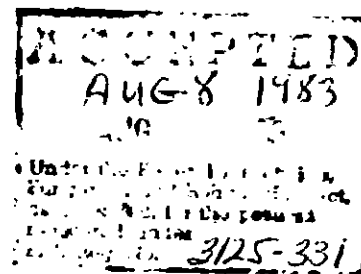
KEEP OUT OF REACH OF CHILDREN

CAUTION

See Side Panel for Statements of Practical Treatment
and Other Precautionary Statements

NET WEIGHT _____ POUNDS

MOBAY CHEMICAL CORPORATION
AGRICULTURAL CHEMICALS DIVISION
Box 4913, Kansas City, Mo. 64120



PRECAUTIONARY STATEMENTS

HAZARDS TO HUMANS AND DOMESTIC ANIMALS

CAUTION

Harmful if swallowed. Avoid contact with skin. If on skin, wash thoroughly with soap and warm water after handling. Wash container and hands with soap and hot water before reuse. Keep out of reach of children.

STATEMENTS OF PRACTICAL TREATMENT

If in eyes, flush with plenty of water. If on skin, wash with soap and hot water.

ENVIRONMENTAL HAZARDS

This pesticide is toxic to fish and wildlife. Keep out of lakes, streams and ponds. Do not contaminate water by cleaning of equipment or disposal of wastes.

DISPOSAL STATEMENTS

Household: Do not reuse empty container. Wrap and put in trash collection.

Pesticide Disposal (except household): Pesticide that cannot be used according to label directions must be disposed of according to Federal, State, or local procedures under the Resource Conservation and Recovery Act.

Container Disposal (except household): Do not use container in connection with food, feed, or drinking water. Dispose of in a sanitary landfill or by incineration if permitted by State and local authorities.

DIRECTIONS FOR USE

It is a violation of Federal law to use this product in a manner inconsistent with its labeling.

IMPORTANT: Read these entire Directions for Use and Conditions of Sale before using OFTANOL 1.5% Granular insecticide.

CONDITIONS OF SALE: THE DIRECTIONS ON THIS LABEL WERE DETERMINED THROUGH RESEARCH TO BE THE DIRECTIONS FOR CORRECT USE OF THIS PRODUCT. THIS PRODUCT HAS BEEN TESTED FOR A RANGE OF WEATHER CONDITIONS SIMILAR TO THOSE WEATHER CONDITIONS THAT ARE ORDINARY AND CUSTOMARY IN THE GEOGRAPHIC AREA WHERE THE PRODUCT IS USED. INSUFFICIENT CONTROL OF PESTS MAY RESULT FROM THE OCCURRENCE OF EXTRAORDINARY OR UNUSUAL WEATHER, OR FROM FAILURE TO FOLLOW LABEL DIRECTION. IN ADDITION, FAILURE TO FOLLOW LABEL DIRECTIONS MAY CAUSE INJURY TO THE CROP TO WHICH THE PRODUCT IS APPLIED, OTHER CROPS, ANIMALS, MAN OR THE ENVIRONMENT. MOBAY AND THE SELLER OFFER, AND THE BUYER ACCEPTS AND USES THIS PRODUCT SUBJECT TO THE CONDITIONS THAT EXTRAORDINARY OR UNUSUAL WEATHER, OR FAILURE TO FOLLOW LABEL DIRECTIONS ARE BEYOND THE CONTROL OF MOBAY AND ARE, THEREFORE, THE RESPONSIBILITY OF THE BUYER.

OFTANOL 1.5% Granular

DIRECTIONS FOR USE (Cont'd)

OFTANOL 1.5% Granular insecticide is recommended for use on home lawns, and other turf areas.

APPLICATION EQUIPMENT

Apply OFTANOL 1.5% Granular uniformly over the turf area with suitable granular turf application equipment. Both drop-type and rotary-type spreaders may be used to apply OFTANOL 1.5% Granular. Avoid the use of spreaders which would apply the material in narrow, concentrated bands. Calibrate application equipment prior to use according to the manufacturer's directions. Check frequently to be sure equipment is working properly and distributing granules uniformly.

APPLICATION TECHNIQUES

OFTANOL 1.5% Granular application using a pull-type drop spreader can be aided by a splash board mounted under the hopper for more uniform granule distribution. A more uniform application can be made by spreading half the required amount of OFTANOL 1.5% Granular over the area, and then immediately apply the remaining half at right angles or crosswise. The full recommended rate of OFTANOL 1.5% Granular must be used for maximum benefit.

When applying OFTANOL 1.5% Granular, use appropriate marking systems and make application when the wind is calm to prevent missed areas.

SPREADER SETTINGS

Approximate Spreader Setting's for apply OFTANOL 1.5% Granular the the Rate of 3 pounds per 1000 sq. ft.

| <u>MODEL</u> | <u>SETTING*</u> |
|-------------------|-----------------|
| Cyclone model B-1 | 3.5 (5) |
| Scotts PF-1/011B | 6.0 (10) |

BEST DOCUMENT AVAILABLE

*NOTE: Only one set of numbers will appear on the final printed label depending on the type of carrier used. The lower numbers will appear when are used as the carrier, while the higher numbers will appear when is used as the carrier.

OFTANOL 1.5% Granular

| RECOMMENDED APPLICATIONS | | | |
|--------------------------|---|--------------------------------|---|
| CROP | PEST | DOSAGE OFTANOL 1.5% G. | REMARKS |
| Turf Grasses | <u>SOIL INSECTS</u> White grub larvae (such as Japanese beetle, Black turf grass ataenius, Chafers, <u>Phyllophaga</u> spp. Green June beetle, Oriental beetle, Asiatic garden beetle) Billbug (larval stage) Hyperodes weevil (larval stage) Mole crickets | 3 lbs./1000 sq. ft. | <p>Be Sure to Read "APPLICATION EQUIPMENT Section of this label.</p> <p>Do not apply more than 6 lbs. of OFTANOL 1.5% Granular per 1000 sq. ft. per year or an equivalent amount of 1.45 ounces active ingredient per 1000 sq. ft. regardless of formulation used. Minimum interval between applications must be 30 days.</p> <p><u>For White Grub and Billbug Larval Control:</u> Water turf area thoroughly within 24 hours of application, using sufficient water to wet soil 1 to 1-1/2 inches deep.</p> <p><u>For Hyperodes Weevil Control:</u> Apply between full bloom periods of forsythia and flowering dogwood, usually April 15 to May 15, and water-in as for white grub larval control.</p> <p><u>For Mole Cricket Control:</u> Water immediately after application using 1/2 to 1 inch of water.</p> <p>Consult your local turf, state Agricultural Experiment Station, or state Extension Service Specialists for more specific information regarding timing of application.</p> |
| | <u>SURFACE INSECTS</u> Sod webworm larvae Chinch bug | 1.5 or 3 lbs. /1000 sq. ft. | <p>Apply 1/2 to 1 inch of water within 24 hours of treatment. Reapply as necessary for pest re-infestations. Do not apply more than 6 lbs. OFTANOL 1.5% Granular per 1000 sq. ft. per year or an equivalent amount of 1.45 ounces active ingredient per 1000 sq. feet regardless of formulation used. Minimum interval between applications is 15 days for 1.5 lb. rate and 30 days for the 3 lb. rate.</p> <p>Consult your local turf, state Agricultural Experiment Station, or state Extension Service Specialists for more specific information regarding timing of application.</p> |

RESTRICTIONS

Do not mow treated turf area before rainfall or irrigation has been applied as per RECOMMENDED APPLICATIONS. Do not graze treated areas or use clippings from treated areas for feed or forage.

OFTANOL is a Reg. TM of the Parent Company of Farbenfabriken Bayer GmbH, Leverkusen.