

PM 25

3125-325

1 of 3

325 8255.YLD

Pre-Reg (8288)

U. S. LABEL

**Reason to Issue:** To revise claims for use on tomatoes.  
**08/17/94 Draft:** Revise in line with internal comments.

**Date of Draft:** 08/17/94(Pre-Reg)(H)  
**Supersedes Pre-Reg Draft Dated:** 05/26/94

# SENCOR® DF

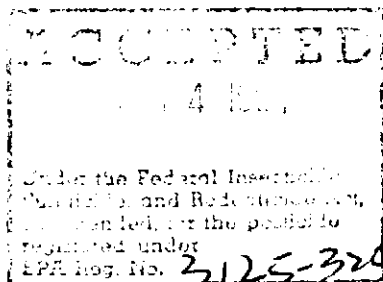
## 75% Dry Flowable Herbicide

**ACTIVE INGREDIENT:**

4-Amino-6-(1,1-dimethylethyl)-3-(methylthio)-1,2,4-triazin-5(4H)-one ..... 75%  
**INERT INGREDIENTS:**..... 25%  
100%

EPA Reg. No. 3125-325

### AMENDMENT TO CURRENTLY REGISTERED LABELING REVISE TO READ AS FOLLOWS:



**MILES**

Miles Inc.  
Crop Protection Products  
Box 4913, Kansas City, MO 64120-0013

SENCOR DF 75%

## TOMATOES

Apply SENCOR herbicide with ground equipment to seeded and transplanted tomatoes as specified below under "Recommended Applications".

For effective control of grasses and broadleaf weeds with postemergence applications, apply SENCOR DF before weeds are 1-inch tall. Thorough spray coverage on weed foliage is essential for adequate control with postemergence applications.

Do not use air blast or other high pressure spray equipment to make postemergence applications of SENCOR DF. Refer to the appropriate section of this label for additional information regarding spray equipment, dilution rates, mixing, sprayer cleanup, restrictions, container disposal and cautions.

For specific application information see the "General Information" section in the front of this label.

### WEEDS CONTROLLED:

#### PREPLANT INCORPORATED APPLICATIONS - TRANSPLANT TOMATOES ONLY

##### Broadcast Sprays - 1/3 to 2/3 Lb SENCOR DF/Acre

###### Broadleaves

Galinsoga

(*Galinsoga* spp.)

Lambsquarters

(*Chenopodium album*)

\*Pigweed, Redroot

(*Amaranthus retroflexus*)

\*Purslane, Common

(*Portulaca oleracea*)

###### Grasses

\*Goosegrass

(*Eleusine indica*)

Preplant incorporated applications applied as directed will suppress foxtails, panicums and barnyardgrass.

**SENCOR/Trifluralin Tank Mix:** This tank mix combination applied preplant incorporated as directed on this label will control the weeds listed above plus those weeds listed on the trifluralin label.

#### POSTEMERGENCE APPLICATIONS--ESTABLISHED TOMATOES

For effective control of weeds with postemergence applications, apply SENCOR DF before weeds are 1-inch tall.

##### Broadcast Sprays - 1/3 to 2/3 Lb SENCOR DF/Acre

###### Broadleaves

Carpetweed

(*Mollugo verticillata*)

Fumitory

(*Fumaria officinalis*)

Galinsoga

(*Galinsoga* spp.)

\*Jimsonweed

(*Datura stramonium*)

\*Ladysthumb

(*Polygonum persicaria*)

Lambsquarters

(*Chenopodium album*)

Mustard, Wild

(*Brassica kaber*)

Pigweeds

(*Amaranthus* spp.)

Purslane

(*Portulaca oleracea*)

\*Ragweed, Common

(*Ambrosia artemisiifolia*)

\*Smartweed, Pennsylvania

(*Polygonum pennsylvanicum*)

Toadflax

(*Linaria* spp.)

\*Velvetleaf

(*Abutilon theophrasti*)

##### Directed Sprays - 2/3 to 1-1/3 Lb SENCOR DF/Acre

###### Grasses

\*Foxtail, Yellow

(*Setaria glauca*)

Goosegrass

(*Eleusine indica*)

**Plus Weeds Listed Under Broadcast Sprays**

\*For optimum control of these weeds, use the highest rate recommended on the label for the type of application to be made. Repeat postemergence applications may be needed for best control.

Postemergence applications as directed on this label will suppress barnyardgrass and crabgrass when these weeds are less than 1-inch tall.

RECOMMENDED BROADCAST APPLICATIONS		
CROP	SENCOR DF *Lb/Acre	REMARKS
Tomatoes	1/3 to 2/3	<b>PREPLANT INCORPORATED--TRANSPLANT TOMATOES ONLY:</b> Apply specified dosage in 10 or more gallons of water per acre as a broadcast spray to the soil surface immediately before transplanting. Incorporate to a depth of 2 to 4 inches with equipment capable of uniformly mixing the chemical into the soil. This application may be made alone or in a tank mix combination with trifluralin. Refer to the trifluralin label for specific rate of application and for additional precautions and restrictions for tomatoes.
	1/3 to 2/3	<b>POSTEMERGENCE BROADCAST SPRAY--ESTABLISHED TOMATOES:</b> Apply specified dosage in 20 or more gallons of water per acre as a broadcast spray, or apply in 1/4 to 3/4 inch of water (use 1/4 to 1/2 inch of water on sandy soils) per acre as a continuous injection in center pivot and lateral move systems or apply in the last 15 to 30 minutes of set in permanent solid set sprinkler systems. One or more applications may be applied per use season. Allow at least 14 days between applications or severe crop injury may occur. For transplanted tomatoes, do not apply until transplants have recovered from transplant shock and new growth is evident. Do not apply to tomatoes within 24 hours of application of other pesticides. Do not tank mix with other pesticides. (See "Special Precautions" below.)
	2/3 to 1-1/3	<b>POSTEMERGENCE DIRECTED SPRAY--ESTABLISHED TOMATOES:</b> Apply specified dosage in 20 or more gallons of water per acre as a directed spray. One or more applications may be applied per use season. Allow at least 14 days between applications or severe crop injury may occur. Avoid contacting tomato foliage with spray. This method of treatment is recommended for use in fields with a history of severe weed pressure or in fields infested with hard-to-control weeds. For transplanted tomatoes, do not apply until transplants have recovered from transplant shock and new growth is evident. Do not apply to tomatoes within 24 hours of application of other pesticides. (See "Special Precautions" below.) When banding see the appropriate section in the front of this label.
*Use the higher rate in fields with a history of severe weed pressure and for maximum residual weed control.		

**SPECIAL PRECAUTIONS (Tomatoes):** Do not apply more than a total of 1-1/3 lb SENCOR DF per crop season.

Do not apply the total amount of 1-1/3 lb SENCOR DF within a time span of less than 35 days, except in the case of directed sprays.

Allow at least 14 days between applications, regardless of dosage or method of application or severe crop injury may occur.

Do not apply within 7 days of harvest.

Do not apply within 3 days after periods of cool, wet or cloudy weather, or crop injury will occur.

Do not use hot caps on tomatoes within 7 days before or at any time after application of SENCOR DF. Do not treat seeded tomatoes until plants have reached the 5 to 6 leaf stage or severe crop injury may occur.

Crop injury or delayed maturity may result from broadcast or directed spray applications if tomatoes are growing under stress conditions such as periods of drought or cool, wet and cloudy weather preceding application.

For newly introduced tomato varieties with unknown tolerance to SENCOR, treat only a small area to determine if SENCOR DF can be used without injury to the crop.

**DO NOT USE SENCOR DF ON TOMATOES IN KERN COUNTY, CALIFORNIA.**