



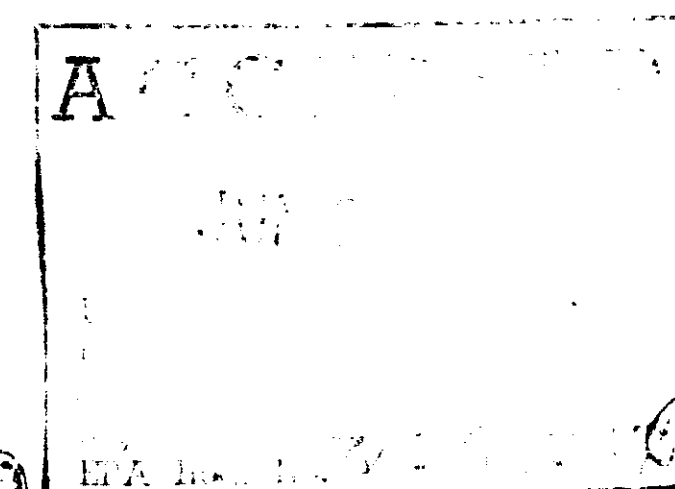
Reduced to 65¢  
of original

<sup>®</sup> NEMACUR

15% Granular

**NEMATICIDE**

for commercial or professional use



for effective control  
of nematodes in certain  
field and vegetable crops  
and turf grasses

ACTIVE INGREDIENTS:

Ethyl 3-methyl-4-methylthio-5-thio-  
(1-methylethyl)phosphonate 100%

INERT INGREDIENTS: 89.4  
100%

U.S. Patent No. 2,970,179  
Canadian Patent No. 879,795

EPA Reg. No. 3125-230

NET WEIGHT 50 POUNDS

**DANGER**  **POISON**

Keep out of reach of children

(See Antidote and Danger Statement on Rear Panel)

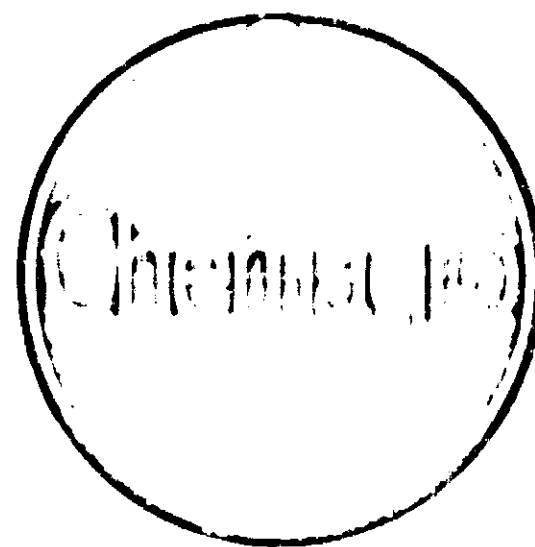
**STOP**

READ THE LABEL BEFORE USE

SOLD BY  
CHEMACRO AGRICULTURAL DIVISION  
MOBAY CHEMICAL CORPORATION  
Box 4913, Kansas City, Missouri 64110

1111-822

1111-822



# NEMACUR

## 15% Granular

### NEMATOCIDE

for commercial or professional use

## DIRECTIONS FOR USE

**IMPORTANT:** Read these entire Directions and Conditions of Sale before using NEMACUR 15% Granular nematocide.

**CONDITIONS OF SALE:** THE DIRECTIONS ON THIS LABEL WERE DETERMINED THROUGH RESEARCH TO BE THE DIRECTIONS FOR CORRECT USE OF THIS PRODUCT. THIS PRODUCT HAS BEEN TESTED FOR A RANGE OF WEATHER CONDITIONS SIMILAR TO THOSE WEATHER CONDITIONS THAT ARE ORDINARY AND CUSTOMARY IN THE GEOGRAPHIC AREA WHERE THE PRODUCT IS USED. FAILURE TO FOLLOW THESE DIRECTIONS OR THE OCCURRENCE OF WEATHER CONDITIONS THAT ARE EXTRAORDINARY OR UNUSUAL FOR THE USE AREA MAY RESULT IN UNSATISFACTORY PERFORMANCE OF THE PRODUCT. CHEMAGRO AND THE SELLER OFFER, AND THE BUYER ACCEPTS AND USES, THIS PRODUCT SUBJECT TO THE AFOREMENTIONED CONDITIONS WHICH ARE BEYOND THE CONTROL OF CHEMAGRO AND THEREFORE THE RESPONSIBILITY OF THE BUYER.

**AGRICULTURAL CROPS:** NEMACUR 15% Granular has shown excellent activity against the major genera of nematodes attacking the following crops. NEMACUR kills nematodes by contact action. An application at planting time has provided season-long protection from nematode damage.

**TURF GRASSES:** NEMACUR 15% Granular has shown excellent activity against the major genera of nematodes attacking turf grasses. When used according to directions NEMACUR 15% Granular may control nematodes up to 7 months or longer.

NEMACUR 15% Granular kills nematodes by contact action. Treated turf should be irrigated immediately after application in order to move the toxicant into the root zone.

NEMACUR 15% Granular controls nematodes in ornamental turf composed of Bermuda and centipede grasses, bluegrasses, and bentgrasses. When applied uniformly according to directions, it will not harm established turf grasses listed. Do not apply to newly seeded areas until the plants have developed good root systems.

Consult your local Agricultural Experiment Station or Extension authorities for information regarding proper timing of applications to turf.

DESCRIPTION

## CONTAINER DISPOSAL

**DO NOT REUSE THE CONTAINER**—Completely empty the contents and bury the unused chemical at least 18 inches deep in an isolated location away from water supplies.

Burn the empty container completely. Exercise extreme caution and stay well away from the smoke. Do not use container in any connection with feed, food, or drinking water.



**Poisonous** If swallowed, inhaled, or absorbed through the skin. Rapidly absorbed through the skin. Do not get in eyes, on skin. Do not breathe dust. Wear protective clothing and cotton or natural rubber gloves. If cotton gloves are used, they must be laundered or discarded after each day's use. Do not wear the same gloves for other work. Rubber gloves should be washed with soap and water after use.

Do not contaminate feed or food. Keep all unprotected persons out of the operating area or vicinity. Wash hands, arms, and face thoroughly with soap and warm water before eating or smoking. Wash all contaminated clothing with soap and hot water before re-use. Keep out of reach of children.

Not for use or storage in or around the home.

**SYMPTOMS OF POISONING:** A sense of "tightness" in the chest. Sweating. Contracted pupils. Stomach pains. Vomiting and diarrhea.

**TREATMENT:** In case of poisoning call a physician immediately. Have patient lie down and keep quiet. If swallowed, induce vomiting by giving a tablespoonful of salt in a glass of warm water. Administer milk or water freely and again induce vomiting until vomit fluid is clear. If on skin, remove contaminated clothing and wash skin immediately with soap and warm water. If eyes are contaminated, wash with flowing water for at least 15 minutes.

## TO PHYSICIAN

**ANTIDOTE**—Administer atropine sulfate in large therapeutic doses. Repeat as necessary to the point of tolerance. 2 PAM is the antidotal and may be administered in conjunction with atropine.

### RESTRICTIONS

Do not replant treated areas with any food crop not specified on this label within 12 months after last applica<sup>n</sup>. Any cover crops that are planted during the 12 month period n<sup>t</sup> be plowed under and not grazed.

Do not use on other crops. Use only according to label directions.

Do not allow livestock or poultry to feed on grass or grass clippings.

This product is toxic to fish and wildlife. Keep out of lakes, streams, or ponds. Birds feeding on treated areas may be killed.

Do not apply this product with a knapsack or similar equipment that is placed on the user's body.

and may be administered in conjunction with atropine.

Compound inhibits cholinesterase resulting in stimulation of the central nervous system, the parasympathetic nervous system, and the somatic motor nerves. Do not <sup>use</sup> morphine. Watch for pulmonary edema, which may develop in s<sup>erious</sup> cases of poisoning even after 12 hours. At first sign of pulmonary edema, the patient should be placed in an oxygen tent and treated symptomatically.

NEMACUR is a Reg. TM of the Parent Company of Farbenfabriken Bayer GmbH, Leverkusen.

579030

### RECOMMENDED APPLICATIONS

CROP	DOSAGE NEMACUR 15% GRANULAR		REMARKS
	BAND: OZS./ 1,000 Ft. of Row	BROADCAST: LBS./ ACRE	
<b>FIELD CROPS</b> Cotton	13.5 to 27 ounces for any row spacing (or 11 to 22 pounds per acre on 40 inch rows)	(USE ONLY BAND APPLICATION ON COTTON)	<b>FOR BAND OR BROADCAST APPLICATION</b>  <b>BAND:</b> Apply specified dosage in oz. per 1,000 ft. of row in front of the planter shoe as a 12 to 18 inch band for field crops or as a 12 to 15 inch band for vegetables. Incorporate the granules into the soil to a depth of 2 to 6 inches. Use the high rate in fields with high populations of nematodes or in fields having a history of serious nematode damage. WHEN BAND APPLICATIONS ARE USED ON NARROW ROW CROPS, DO NOT USE BAND WIDTHS THAT WILL ALLOW TREATED AREAS TO OVERLAP.  <b>BROADCAST:</b> Distribute the granules uniformly over the entire area to be treated and immediately incorporate to a depth of 2 to 6 inches by disking or tilling. Use the high rate in fields with high populations of nematodes or in fields having a history of serious nematode damage.  <b>NOTE:</b> For both band and broadcast applications do not feed or graze cotton foliage, soybean vines, green peanut vines or peanut vine hay. Do not hog down treated peanut fields.
Peanuts	11 to 18.7 ounces for any row spacing (or 10 to 17 pounds per acre on 36-inch rows)	20 to 33.5 pounds	
Soybeans	6.7 to 26.7 ounces for any row spacing (or 6 to 24 pounds per acre on 36 inch rows)	26.7 to 40 pounds	
<b>VEGETABLES</b> Cabbage (direct seeded and transplanted)	11 to 22 ounces for any row spacing (or 10 to 20 pounds per acre on 36 inch rows)	26.7 to 40 pounds	
Brussels sprouts (transplanted)	11 to 22 ounces for any row spacing (or 10 to 20 pounds per acre on 36-inch rows)	26.7 to 40 pounds	

### RECOMMENDED APPLICATIONS—TURF GRASSES

FOR USE ONLY ON GOLF COURSES, CEMETARIES, SOD FARMS, INDUSTRIAL GROUNDS, PARKWAYS AND ROADWAYS

CROP	PEST	DOSAGE NEMACUR 15% Gran.	REMARKS
<b>ORNAMENTALS</b> Turf Grasses (Bermuda, Centipede, Bluegrass & Bentgrass)	Nematodes	1½ to 3 pounds per 1000 square feet	Distribute specified dosage of NEMACUR 15% Granular evenly over area to be treated. This dosage is equivalent to approximately 68 to 134 pounds of NEMACUR 15% Granular per acre. Irrigate treated area immediately using a minimum of ½ inch of water. Do not treat newly seeded areas. Do not apply more than twice per year.
NOTE—Do not use on residential lawns or public recreational areas other than golf courses.			

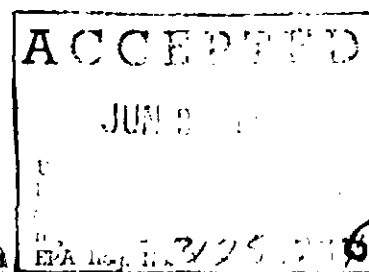
**ORGANIC PHOSPHATE COMPOUND • MIXTURE • DRY • N.O.S.**



260000-10657  
OF ORIGINAL

# NEMACUR

15% Granular  
**NEMATICIDE**  
for commercial or professional use



for effective control  
of nematodes in certain  
field and vegetable crops  
and turf grasses

ACTIVE INGREDIENT:

Edyl 3-methyl-4-(methylthio)phenyl  
(1-methylthio)phosphonate ..... 15%

INERT INGREDIENTS: ..... 85%  
100%

U.S. Patent No. 2,970,179  
Canadian Patent No. 819,775

EPA Reg. No. 9125-210

NET WEIGHT 50 POUNDS

**DANGER**  **POISON**

Keep out of reach of children

(See Antidote and Danger Statement on Rear Panel)

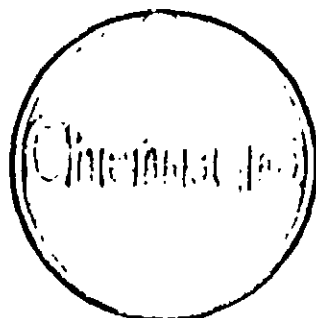
**STOP**

READ THE LABEL BEFORE USE

SOLD BY  
CHEMAGRO AGRICULTURAL DIVISION  
MOBAY CHEMICAL CORPORATION  
Box 4913, Kansas City, Mo. 64110

111-822

111-822



# NEMACUR

## 15% Granular

### NEMATOCIDE

for commercial or professional use

#### DIRECTIONS FOR USE

**IMPORTANT:** Read these entire Directions and Conditions of Sale before using NEMACUR 15% Granular nematocide.

**CONDITIONS OF SALE:** THE DIRECTIONS ON THIS LABEL WERE DETERMINED THROUGH RESEARCH TO BE THE DIRECTIONS FOR CORRECT USE OF THIS PRODUCT. THIS PRODUCT HAS BEEN TESTED FOR A RANGE OF WEATHER CONDITIONS SIMILAR TO THOSE WEATHER CONDITIONS THAT ARE ORDINARY AND CUSTOMARY IN THE GEOGRAPHIC AREA WHERE THE PRODUCT IS USED. FAILURE TO FOLLOW THESE DIRECTIONS OR THE OCCURRENCE OF WEATHER CONDITIONS THAT ARE EXTRAORDINARY OR UNUSUAL FOR THE USE AREA MAY RESULT IN UNSATISFACTORY PERFORMANCE OF THE PRODUCT. CHEMAGRO AND THE SELLER OFFER, AND THE BUYER ACCEPTS AND USES, THIS PRODUCT SUBJECT TO THE AFOREMENTIONED CONDITIONS WHICH ARE BEYOND THE CONTROL OF CHEMAGRO AND THEREFORE THE RESPONSIBILITY OF THE BUYER.

**AGRICULTURAL CROPS:** NEMACUR 15% Granular has shown excellent activity against the major genera of nematodes attacking the following crops. NEMACUR kills nematodes by contact action. An application at planting time has provided season-long protection from nematode damage.

**TURF GRASSES:** NEMACUR 15% Granular has shown excellent activity against the major genera of nematodes attacking turf grasses. When used according to directions NEMACUR 15% Granular may control nematodes up to 7 months or longer.

NEMACUR 15% Granular kills nematodes by contact action. Treated turf should be irrigated immediately after application in order to move the toxicant into the root zone.

NEMACUR 15% Granular controls nematodes in ornamental turf composed of Bermuda and centipede grasses, bluegrasses, and bentgrasses. When applied uniformly according to directions, it will not harm established turf grasses listed. Do not apply to newly seeded areas until the plants have developed good root systems.

Consult your local Agricultural Experiment Station or Extension authorities for information regarding proper timing of applications to turf.

RESTRICTIONS

#### CONTAINER DISPOSAL

**DO NOT REUSE THE CONTAINER** - Completely empty the contents and bury the unused chemical at least 18 inches deep in an isolated location away from water supplies.

Burn the empty container completely. Exercise extreme caution and stay well away from the smoke. Do not use container in any connection with food, food, or drinking water.

#### POISONING

Poisonous if swallowed, inhaled, or absorbed through the skin. Rapidly absorbed through the skin. Do not get in eyes, on skin. Do not breathe dust. Wear protective clothing and cotton or natural rubber gloves. If cotton gloves are used, they must be laundered or discarded after each day's use. Do not wear the same gloves for other work. Rubber gloves should be washed with soap and water after use.

Do not contaminate food or food. Keep all unprotected persons out of the operating area or vicinity. Wash hands, arms, and face thoroughly with soap and warm water before eating or smoking. Wash all contaminated clothing with soap and hot water before re-use. Keep out of reach of children.

Not for use or storage in or around the home.

**SYMPTOMS OF POISONING:** A sense of "tightness" in the chest. Sweating. Contracted pupils. Stomach pains. Vomiting and diarrhea.

**TREATMENT:** In case of poisoning call a physician immediately. Have patient lie down and keep quiet. If swallowed, induce vomiting by giving a tablespoonful of salt in a glass of warm water. Administer milk or water freely and again induce vomiting until vomit fluid is clear. If on skin, remove contaminated clothing and wash skin immediately with soap and warm water. If eyes are contaminated, wash with flowing water for at least 15 minutes.

#### TO PHYSICIAN

**ANTIDOTE** - Administer atropine sulfate in large therapeutic doses. Repeat as necessary to the point of tolerance. 2-PAM is also antidotal and may be administered in conjunction with atropine.

# RESTRICTIONS

Do not replant treated areas with any food crop not specified on this label within 12 months after last application. Any cover crops that are planted during the 12 month period must be plowed under and not grazed.

Do not use on other crops. Use only according to label directions.

Do not allow livestock or poultry to feed on grass or grass clippings.

This product is toxic to fish and wildlife. Keep out of lakes, streams, or ponds. Birds feeding on treated areas may be killed.

Do not apply this product with a knapsack or similar equipment that is placed on the user's body.

and may be administered in conjunction with atropine.

Compound inhibits cholinesterase resulting in stimulation of the central nervous system, the parasympathetic nervous system, and the somatic motor nerves. Do not use morphine. Watch for pulmonary edema, which may develop in serious cases of poisoning even after 12 hours. At first sign of pulmonary edema, the patient should be placed in an oxygen tent and treated symptomatically.

NEMACUR is a Reg. TM of the Parent Company of Farbwerke/Dr. Bayer GmbH, Leverkusen.

579030

## RECOMMENDED APPLICATIONS

CROP	DOSAGE NEMACUR 15% GRANULAR		REMARKS
	BAND, OZS/ 1,000 Ft. of Row	BROADCAST: LBS./ ACRE	
FIELD CROPS Cotton	13.5 to 27 ounces for any row spacing (or 11 to 22 pounds per acre on 40 inch rows)	(USE ONLY BAND APPLICATION ON COTTON)	<b>FOR BAND OR BROADCAST APPLICATION</b>  <b>BAND:</b> Apply specified dosage in oz. per 1,000 ft. of row in front of the planter shoe as a 12 to 18 inch band for field crops or as a 12 to 15 inch band for vegetables. Incorporate the granules into the soil to a depth of 2 to 6 inches. Use the high rate in fields with high populations of nematodes or in fields having a history of serious nematode damage. WHEN BAND APPLICATIONS ARE USED ON NARROW ROW CROPS, DO NOT USE BAND WIDTHS THAT WILL ALLOW TREATED AREAS TO OVERLAP.  <b>BROADCAST:</b> Distribute the granules uniformly over the entire area to be treated and immediately incorporate to a depth of 2 to 6 inches by disking or tilling. Use the high rate in fields with high populations of nematodes or in fields having a history of serious nematode damage.  <b>NOTE:</b> For both band and broadcast applications do not feed or graze cotton foliage, soybean vines, green peanut vines or peanut vine hay. Do not hog down treated peanut fields.
Peanuts	11 to 18.7 ounces for any row spacing (or 10 to 17 pounds per acre on 36 inch rows)	20 to 33.5 pounds	
Soybeans	6.7 to 26.7 ounces for any row spacing (or 6 to 24 pounds per acre on 36 inch rows)	26.7 to 40 pounds	
VEGETABLES Cabbage (direct seeded and transplanted)	11 to 22 ounces for any row spacing (or 10 to 20 pounds per acre on 36 inch rows)	26.7 to 40 pounds	
Brussels sprouts (transplanted)	11 to 22 ounces for any row spacing (or 10 to 20 pounds per acre on 36 inch rows)	26.7 to 40 pounds	

## RECOMMENDED APPLICATIONS—TURF GRASSES

FOR USE ONLY ON GOLF COURSES, CEMETARIES, SOO FARMS, INDUSTRIAL GROUNDS, PARKWAYS AND ROADWAYS

CROP	PEST	DOSAGE NEMACUR 15% Gran.	REMARKS
ORNAMENTALS Turf Grasses (Bermuda, Centipede, Bluegrass & Bentgrass)	Nematodes	1½ to 3 pounds per 1,000 square feet	Distribute specified dosage of NEMACUR 15% Granular evenly over area to be treated. This dosage is equivalent to approximately 68 to 134 pounds of NEMACUR 15% Granular per acre. Irrigate treated area immediately using a minimum of ½ inch of water. Do not treat newly seeded areas. Do not apply more than twice per year.
NOTE—Do not use on residential lawns or public recreational areas other than golf courses.			

ORGANIC PHOSPHATE COMPOUND • MIXTURE • DRY • N.O.S.