

99-6706

Base Pre-Reg. (6706)

U.S. LABEL

Date of Draft: 5/22/89 (Pre-Reg)(M)

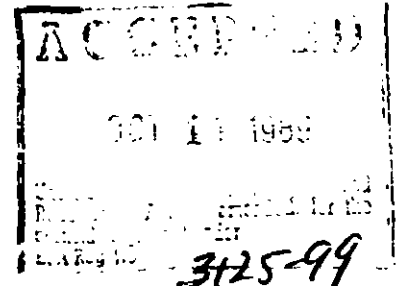
Reason to Issue: To delete end use product listings for blackberries, raspberries, bearing plums, bearing prunes, potatoes and bluegrass (seed crop).

EPA Reg. No. 3125-99

TO BE PRINTED AS A SINGLE PANEL LABEL

METASYSTOX-R  
50% CONCENTRATE  
Insecticide

FOR USE IN THE MANUFACTURE OF INSECTICIDES



ACTIVE INGREDIENT:

S-[2-(Ethylsulfinyl)ethyl] O,O-Dimethyl phosphorothioate ..... 50%

INERT INGREDIENTS: ..... 50%  
100%

FLAMMABLE! KEEP AWAY FROM HEAT AND OPEN FLAME

EPA Reg. No. 3125-99

STOP - READ THE LABEL BEFORE USE

DIRECTIONS FOR USE

It is a violation of Federal law to use this product in a manner inconsistent with its labeling.

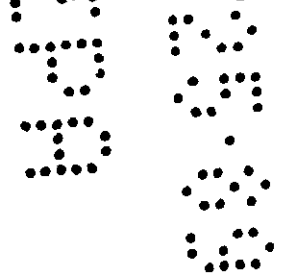
Closed systems for mixing and/or loading this product must be capable of removing the pesticide from the shipping container, rinsing the container, and transferring the pesticide and the rinsate into mixing tanks and/or application equipment. Protective clothing and equipment, specified in the pesticide labeling must also be used when mixing and/or loading this pesticide.

METASYSTOX-R 50% Concentrate is intended for formulation into end use products for:

Terrestrial-Food Uses:

Alfalfa (seed), Clover (seed), Apple (nonbearing), Apricot (nonbearing), Cherry (nonbearing), Crabapple (nonbearing), Grapes (nonbearing), Nectarine (nonbearing), Quince (nonbearing), Avocado (nonbearing), Broccoli, Brussels sprouts, Cabbage, Cauliflower, Citrus (nonbearing), Corn, Cotton, Cucumber, Eggplant, Filbert, Grapefruit, Lemon, Orange, Lettuce, Lima beans, Snap beans, Mint (including spearmint and peppermint), Muskmelon, Watermelon, Onion (Spanish dry blub), Peach (nonbearing), Pear, Peas, Pecan (nonbearing), Walnut (bearing and nonbearing), Peppers, Plum (nonbearing), Prune (nonbearing), Pumpkin, Summer squash, Winter squash, Sorghum, Strawberry, Sugar beets, Turnips, Safflower, Melons

BEST AVAILABLE COPY



284

**METASYSTOX-R 50% Concentrate insecticide**

**DIRECTIONS FOR USE (Continued)**

**Terrestrial-Nonfood Uses:**

Christmas tree plantations, Ornamentals (only by soil or tree injection treatment) such as shade and nursery trees and shrubs

**PRECAUTIONARY STATEMENTS**

**HAZARDS TO HUMANS**

**KEEP OUT OF THE REACH OF CHILDREN**

**WARNING**

May be fatal if swallowed, inhaled, or absorbed through the skin. Prolonged or frequently repeated skin contact causes allergic reactions in some individuals. Do not get in eyes or on skin. Wear clean, waterproof protective clothing (overalls, rubber boots, cap, etc.). Destroy and replace gloves frequently. Bathe immediately after work and change all clothing. Wash contaminated clothing thoroughly with soap and hot water before reuse.

Do not contaminate feed or food.

**STATEMENTS OF PRACTICAL TREATMENT**

If swallowed, vomiting should be induced. Administer water freely and induce vomiting by giving one dose (1/2 oz. or 15 ml.) of syrup of ipecac. If vomiting does not occur within 10 to 20 minutes, administer second dose. If syrup of ipecac is not available, induce vomiting by sticking finger down throat. Repeat until vomit fluid is clear. Never give anything by mouth to an unconscious person. Professional medical assistance should be secured immediately. If on skin, remove contaminated clothing and wash skin immediately with soap and warm water. If eyes are contaminated, wash with flowing water for at least 15 minutes.

If poisoning occurs, obtain prompt medical aid.

Note to Physician: May cause cholinesterase depression. Atropine sulfate is antidotal. 2-PAM is also antidotal and may be administered in conjunction with atropine.

**ENVIRONMENTAL HAZARDS**

This pesticide is toxic to fish. Do not discharge effluent containing this product directly into lakes, streams, ponds, estuaries, oceans, or public waters unless this product is specifically identified and addressed in an NPDES permit. Do not discharge effluent containing this product to sewer systems without previously notifying the sewage treatment plant authority. For guidance, contact your State Water Board or Regional Office of the Environmental Protection Agency.

**PHYSICAL OR CHEMICAL HAZARDS**

Flammable: Keep away from heat and open flame.

**METASYSTOX-R 50% Concentrate insecticide**

**PROTECTIVE CLOTHING, EQUIPMENT AND WORK SAFETY**

REPEATED EXPOSURES TO CHOLINESTERASE INHIBITORS SUCH AS ARE CONTAINED IN THIS PRODUCT MAY, WITHOUT WARNING, CAUSE PROLONGED SUSCEPTIBILITY TO VERY SMALL DOSES OF ANY CHOLINESTERASE INHIBITOR.

Do not rub eyes or mouth with hands. If you feel sick in any way, STOP WORK and get help right away. See First Aid (Practical Treatment) section of label.

If handled indoors, provide mechanical exhaust ventilation.

HANDLE THIS PRODUCT ONLY THEN WEARING THE FOLLOWING PROTECTIVE CLOTHING AND EQUIPMENT:

Wear a protective suit of one or two pieces that covers all parts of the body except the head, hands, and feet. Wear chemical resistant gloves, chemical resistant apron, and chemical resistant shoes, shoe coverings, or boots. Wear goggles or a face shield. Wear a pesticide respirator approved by the National Institute for Occupational Safety and Health under the provisions of 30 CRF Part II.

IF MIXING AND/OR LOADING IN A CLOSED SYSTEM WEAR THE FOLLOWING PROTECTIVE CLOTHING AND EQUIPMENT:

Wear long sleeve shirt and long legged pants. Wear chemical resistant gloves, chemical resistant apron, and chemical resistant shoes, shoe coverings, or boots. Wear goggles or a face shield.

IMPORTANT! Before removing gloves, wash them with soap and water. Always wash hands, face, and arms with soap and water before smoking, eating, drinking, or toileting.

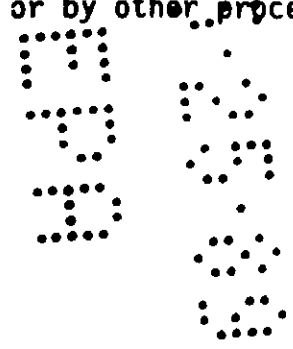
AFTER WORK, take off all clothing and shoes. Shower using soap and water. Wear only clean clothes. Do not wear contaminated clothing. Wash protective clothing and protective equipment with soap and water after each use. Respirators must be cleaned and filters replaced according to instructions included with the respirators. Personal and protective clothing worn during use must be laundered separately from household articles. Clothing and protective equipment heavily contaminated or drenched with oxydemeton-methyl must be destroyed according to state and local regulations. HEAVILY CONTAMINATED OR DRENCHED CLOTHING CANNOT BE ADEQUATELY DECONTAMINATED.

**STORAGE AND DISPOSAL**

Do not contaminate water, food or feed by storage or disposal.

Pesticide Disposal: Pesticides wastes are toxic. Improper disposal of excess pesticide, or rinsate is a violation of Federal Law. If these wastes cannot be disposed of by use according to label instructions, contact your State Pesticide or Environmental Control Agency, or the Hazardous Waste representative at the nearest EPA Regional Office for guidance.

Container Disposal: Triple rinse (or equivalent). Then offer for recycling or reconditioning, or puncture and dispose of in a sanitary landfill, or by other procedures approved by state and local authorities.



4084  
**METASYSTOX-R 50% Concentrate Insecticide**

---

**STORAGE AND DISPOSAL (Continued)**

Store in a cool, dry place and in such a manner as to prevent cross contamination with other pesticides, fertilizers, food, and feed. Store away from heat and open flame. Store in original container and out of the reach of children, preferably in a locked storage area.

Handle and open container in a manner as to prevent spillage. If container is leaking invert to prevent leakage. If the container is leaking or material spilled for any reason or cause, carefully dam up spilled material to prevent runoff. Refer to Precautionary Statements on label for hazards associated with the handling of this material. Do not walk through spilled material. Absorb spilled material with absorbing type compounds and dispose of as directed for pesticides above. In spill or leak incidents, keep unauthorized people away. You may contact the Mobay Emergency Response Team for decontamination procedures or any other assistance that may be necessary. The Mobay Kansas City Emergency Response Telephone No. is 816-242-2582, or contact Chemtrec at 800-424-9300.

METASYSTOX-R is a TM of Bayer AG, Germany.

NET CONTENTS \_\_\_\_\_ POUNDS

IMPORTED BY

**MOBAY CORPORATION**  
A Bayer USA INC. COMPANY  
AGRICULTURAL CHEMICALS DIVISION  
P. O. Box 4913, Kansas City, Missouri 64120