

3095-25

5/22/2012

1/8

UNITED STATES ENVIRONMENTAL PROTECTION AGENCY
WASHINGTON, D.C. 20460-0001



OFFICE OF CHEMICAL SAFETY
AND POLLUTION PREVENTION

May 22, 2012

PIC Corporation
c/o Jeanette A. Covert
Product & Regulatory Associates
P.O. Box 1683
Voorhees, NJ 08043-9998

Subject: Amended label to add additional marketing claims
Product Name: PIC Roach Control Systems
EPA Reg. No. 3095-25
Submission dated May 8, 2012

Dear Ms. Covert:

The amended label referred to above, submitted on behalf of PIC Corporation in connection with registration under the Federal Insecticide, Fungicide, and Rodenticide Act, is acceptable. A stamped copy of the label is enclosed for your records. Please submit one copy of your final printed labeling before you release the product for shipment. Your release for shipment of the product constitutes acceptance of these conditions. If these conditions are not complied with, the registration will be subject to cancellation in accordance with FIFRA section 6(e). If you have any questions, please contact Julie Chao by phone at: (703) 308-8735, or by email at: chao.julie@epa.gov.

Sincerely,

A handwritten signature in black ink, appearing to read "John Hebert", written over a large, loopy circular flourish.

John Hebert, Product Manager 07
Insecticide-Rodenticide Branch
Registration Division (7505P)

PIC ROACH CONTROL SYSTEMS MASTER LABEL

FRONT PANEL

PIC ROACH CONTROL SYSTEMS

PIC Logo



Dependable Insect and Rodent Control Since 1953

Marketing Claims:

- Contains propoxur
- Clean/Effective, Easy to Use
- Clean and Effective
- Effective & Easy to Use
- In to Eat...Out to Die
- For Home and [&] Outdoor Use

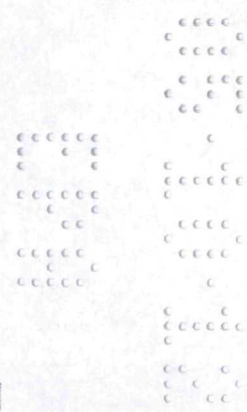
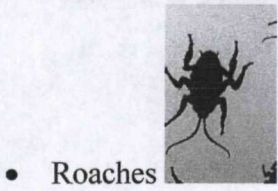
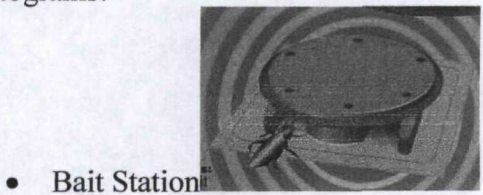
ACCEPTED

MAY 22 2012

Under the Federal Insecticide, Fungicide, and Rodenticide Act, as amended, for the pesticide registered under:

EPA. Reg. No: 3095-25

Pictograms:



Packaging Options:

Contents:

12 Bait Stations

NET WEIGHT: 0.84 ounces/ 24 grams [NET WT 0.84oz. (24g)]

Contents:

6 Bait Stations

NET WEIGHT: 0.42 ounces/ 12 grams [NET WT 0.42oz. (12g)]

KEEP OUT OF REACH OF CHILDREN AND DOMESTIC ANIMALS

CAUTION

See First Aid and Precautionary Statements on the Back Panel

Active Ingredient: Propoxur.....2%
 Other Ingredients:.....98%
 Total.....100%

MADE IN U.S.A.



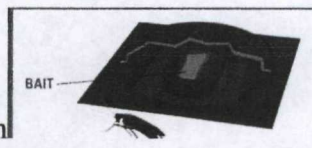
BACK PANEL

PIC Logo

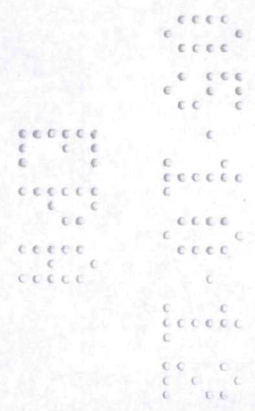
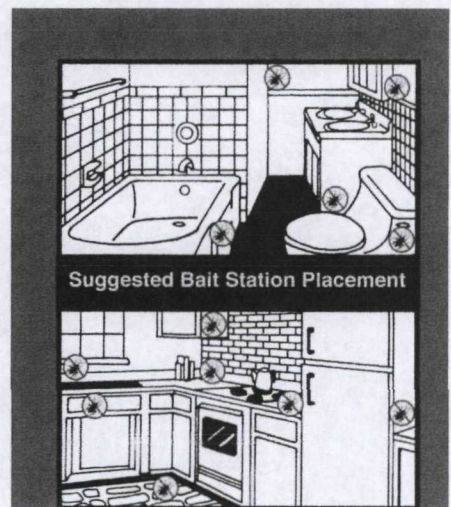


PIC Roach Control Systems
 Dependable Insect and Rodent Control Since 1953

Pictograms:



- Bait station
- Suggested Bait Station Placement (kitchen & bathrooms)



- Roaches



PRECAUTIONARY STATEMENTS

Hazards to Humans and Domestic Animals

CAUTION: Harmful if swallowed. Harmful if absorbed through skin. Causes moderate eye irritation. Avoid contact with skin, eyes or clothing. Wash thoroughly with soap and water after handling and before eating, drinking, chewing gum, using tobacco or using the toilet. Remove and wash contaminated clothing before reuse.

FIRST AID

IF SWALLOWED: Call a Poison Control Center or Doctor for treatment advice. Have person sip a glass of water if able to swallow. Do not induce vomiting unless told to do so by Poison Control Center or Doctor. Do not give anything by mouth to an unconscious person.

IF IN EYES: Hold eye open and rinse slowly and gently with water for 15-20 minutes. Remove contact lenses, if present, after the first 5 minutes, then continue rinsing eye. Call a Poison Control Center or Doctor for treatment advice.

IF ON SKIN OR CLOTHING: Take off contaminated clothing. Rinse skin immediately with plenty of water for 15-20 minutes. Call a Poison Control Center or Doctor for treatment advice.

HOT LINE NUMBER Have the product container or label with you when calling a Poison Control Center or Doctor, or going for treatment. You may also contact 1-800-255-3924 for emergency medical treatment information.

NOTE TO PHYSICIAN Contains an N-methyl carbamate that inhibits cholinesterase. Propoxur is a reversible cholinesterase inhibitor. Atropine sulfate is antidotal and should be administered only if symptoms persist.

DIRECTIONS FOR USE

It is a violation of Federal law to use this product in a manner inconsistent with its labeling.

Remove all food sources from areas where roach bait stations are to be placed. Do not remove roach bait stations from box until ready to use. Do not use this product in food areas of food handling establishments, restaurants, or other areas where food is prepared or processed.

APPLICATION INSTRUCTIONS

1. Break individual roach bait stations apart from plastic frames (Graphic as pictured).

2. Place roach bait stations primarily in the kitchen area and bathrooms. Also place near areas where roaches have been. Other areas might include the pantry, utility room, near exposed plumbing fixtures, windows and doors, under sinks, in corners, under stoves or refrigerators, in cabinets.
3. Roaches will feed on the bait and generally return to their hiding to die.
4. Replace bait stations as needed.

For light infestations: Use 2-3 bait stations per room.
 For heavy infestations: Use 3-6 bait stations per room.

STORAGE AND DISPOSAL

Do not contaminate water, food or feed by storage and disposal.
STORAGE: Store product in a cool, dry place inaccessible to children and pets.
PESTICIDE DISPOSAL and CONTAINER HANDLING: Nonrefillable container. Do not reuse or refill this container. **If Empty:** Place in trash or offer for recycling if available. **If Partly Filled:** Call your local solid waste agency for disposal instructions. Never place unused product down any indoor or outdoor drain.

SATISFACTION OR REFUND. Should "PIC Roach Control Systems" not reduce the roach population, return the [6 or 12] bait stations plus your sales slip for refund.

PIC Logo



Made in U.S.A.

PIC CORPORATION
 1101-1107 W. Elizabeth Ave., Linden, NJ 07036

UPC Bar Code

EPA Reg. No. 3095-25
 EPA Est. No. 3095-NJ-1 P : 3095-NJ-2 B
 Circled letter is first letter of lot number

Additional Marketing Claims:

- Kills Large Roaches, Palmetto Bugs, and Large Water Bugs.
- For Large Roaches, Palmetto Bugs, and Large Water Bugs.
- Effective against Large Roaches, Palmetto Bugs, and Large Water Bugs.
- Special Trial Size.
- Bonus-Pak
- Kills

- Kills Roaches
- Value Pack

SuperValu Optional Marketing Claims

- Great products at a price you'll love- that's the Essential Everyday™. Our goal is to provide the products your family wants, at a substantial savings versus comparable brands. We're so confident that you'll love Essential Everyday, we stand behind our products with a 100% satisfaction guarantee.
- Distributed By SuperValu Inc.
11840 Value View Road
Eden Prairie, MN 66344

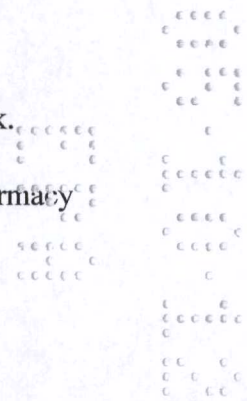


- If you're not completely satisfied with this product, please contact us at www.essentialeveryday.com or 1-877-931-7948.
- Contact Us at 1-877-932-7942



CVS Pharmacy Inc. Optional Marketing Claims

- All CVS products are satisfactory guaranteed or your money back.
- Distributed by: CVS Pharmacy, Inc. Woonsocket, RI 02895
- CVS name, design and related marks are trademarks of CVS/Pharmacy
- © 1999 CVS/Pharmacy



PIC Roach Control Systems
Individual Bait Station Label

PIC Roach Control Systems

This Surface is bottom. Bottom should be placed against floor or stuck on wall.

Active Ingredient: Propoxur.....2%
Other Ingredients:.....98%
Total.....100%

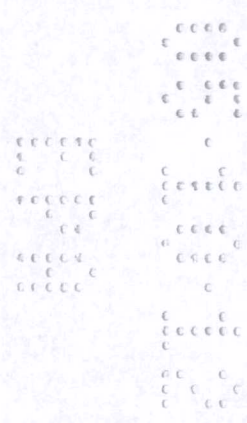
Keep Out of Reach of Children and Domestic Animals

CAUTION

See Directions for Use, First Aid, Storage, Disposal and Precautionary Statements on
Outer Carton.

EPA Reg. No. 3095-25
EPA EST. No. 3095-NJ-1 P: 3095-NJ-2 B
Circled letter is first letter of lot number

Net Wt 0.07 ounces/2grams
PIC Corp., Linden NJ 07036



PIC Roach Control Systems
Individual Bait Station Label

Optional Marketing Label

PIC Roach Control Systems
For Large Roaches

This Surface is bottom. Bottom should be placed against floor or stuck on wall.

Active Ingredient: Propoxur.....	2%
Other Ingredients:.....	98%
Total.....	100%

Keep Out of Reach of Children and Domestic Animals

CAUTION

See Directions for Use, First Aid, Storage, Disposal and Precautionary Statements on Outer Carton.

EPA Reg. No. 3095-25
EPA EST. No. 3095-NJ-1 P: 3095-NJ-2 B
Circled letter is first letter of lot number

Net Wt 0.07 ounces/2grams
PIC Corp., Linden NJ 07036

